



National Weekly Fed Cattle Comprehensive

Agricultural Marketing Service
Livestock, Poultry, and Grain Market News

May 12, 2020

Weighted Average Prices

(Weekly Information from 2pm Previous Monday to 10am Current Monday; Includes Negotiated, Formula Nets, Contract Nets, & Grid Nets)"

All Steers & Heifers (Beef Type Cattle)

Purchasing Basis	% Choice	Head	Avg Price	Week Ago Change	Year Ago Change
Dressed	> 65% Choice	166,330	\$164.08	(\$2.07) ↓	(\$36.49) ↓
	< 65% Choice	18,385	\$159.54	\$0.80 ↑	(\$36.06) ↓
	Total all Grades	184,715	\$163.63	(\$1.87) ↓	(\$36.21) ↓
Live	> 65% Choice	56,299	\$106.26	\$2.55 ↑	(\$15.74) ↓
	< 65% Choice	7,754	\$105.33	\$3.75 ↑	(\$17.83) ↓
	Total all Grades	64,053	\$106.15	\$2.68 ↑	(\$16.04) ↓

Dairy Bred

Purchasing Basis	% Choice	Head	Avg Price	Week Ago Change	Year Ago Change
Dressed	> 65% Choice	22,240	\$160.20	(\$4.68) ↓	(\$21.57) ↓
	< 65% Choice	2,045	\$160.13	\$5.68 ↑	(\$18.40) ↓
	Total all Grades	24,285	\$160.19	(\$3.32) ↓	(\$21.20) ↓
Live	> 65% Choice	1,896	\$89.05	(\$9.54) ↓	(\$18.53) ↓
	< 65% Choice	900	\$80.31	(\$13.50) ↓	(\$29.51) ↓
	Total all Grades	2,796	\$86.24	(\$9.60) ↓	(\$22.27) ↓

Spread Comparison Values

Beef Type minus Dairy Type

(Weekly Information from 2pm Previous Monday to 10am Current Monday; Includes Negotiated, Formula Nets, Contract Nets, & Grid Nets)

Purchasing Basis	Current	Week Ago Change	Year Ago Change
Dressed	\$3.44 ↑	\$1.99 ↑	\$18.45 ↑
Live	\$19.91 ↑	\$7.63 ↑	\$13.68 ↑

Formula Net minus Negotiated

(Beef Type Cattle; All live transactions converted to a dressed price)

52 Week Rolling Average

\$2.93 ↑



Formula Base minus Negotiated

(Beef Type Cattle; All live transactions converted to a dressed price)

52 Week Rolling Average

(\$0.20)



Formula Net minus Formula Base

(Beef Type Cattle; All live transactions converted to a dressed price)

52 Week Rolling Average

\$3.13



Grading % and Carcass Weights

(Beef Type Cattle; Includes Formula Net, Contract Net, and Grid Net; Grading % includes Choice & higher; Carcass Weight includes all grades; All live transactions converted to a dressed basis)

Grading %

83.0

Week Ago

82.9



Dressed Weight

872.5

Week Ago

865.4



Daily Formula Base Voume

Tue May 05

20,099

Wed May 06

17,575

Thu May 07

29,846

Fri May 08

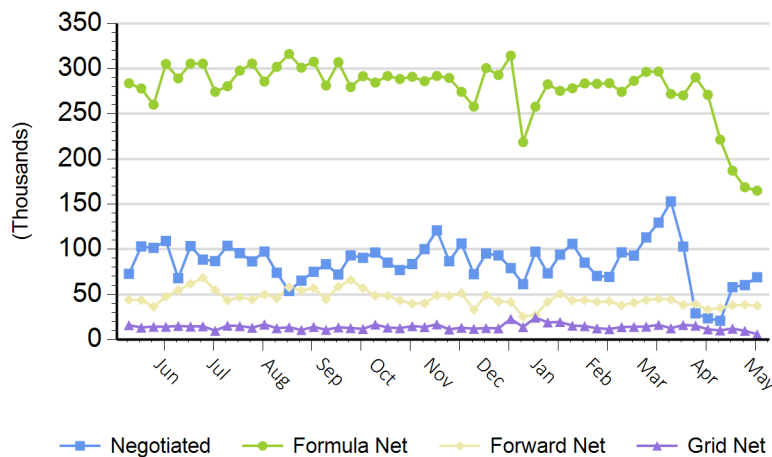
41,435

Mon May 11

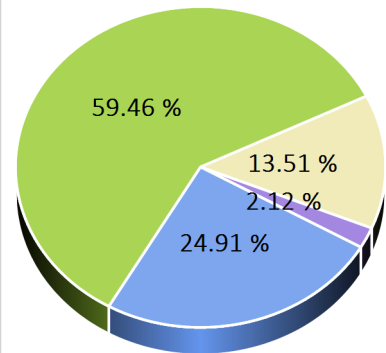
39,671

Purchasing Basis Volume

Weekly Purchasing Basis



Previous Week





National Weekly Fed Cattle Comprehensive

Agricultural Marketing Service
Livestock, Poultry, and Grain Market News

May 12, 2020

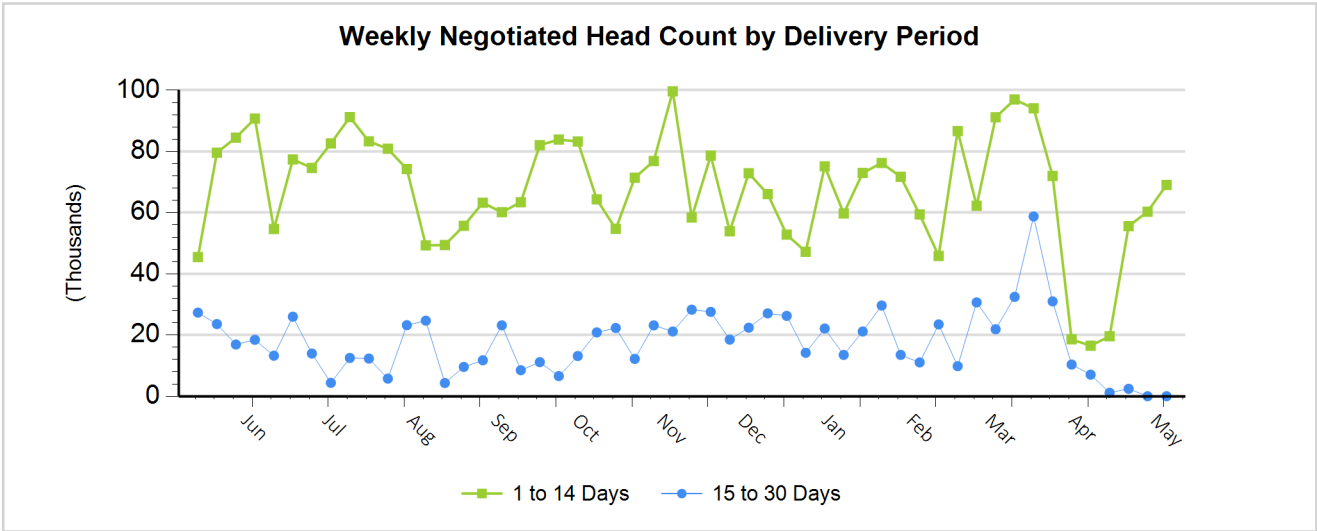
Weekly Negotiated Avg. Price by Delivery Period

(Beef Type Cattle: All live transactions converted to dressed price)

Avg Price (1 to 14 Days)

\$162.35

Avg Price (15 to 30 Days)



For more Information about this report, please visit this link: [National Weekly Fed Cattle Comprehensive Overview](#)