

**KANSAS WEEKLY MARKET RECAP**

Recap For Week Ending:

March 27, 2020

Receipts: This Week: 11,842 Week Ago: 3,337 Year Ago: 13,519

Compared to last week: Feeder steer mostly 8.00 to 13.00 higher, with instances 14.00 to 18.00 higher on thinner reputation cattle. Feeder heifers 8.00 to 13.00 higher, one sale 2.00 to 3.00 higher using limited comparable weights. Calves too lightly tested last week for an accurate market trend, a higher undertone noted. Slaughter cows uneven, steady to 10.00 higher. Slaughter bulls steady to 6.00 higher. Direct feeder cattle no trend due to no comparable Current FOB. For the week, live cash purchases traded mostly 8.00 to 9.00 higher compared to the bulk of the previous week, from 119.00-120.00.

**KANSAS WEEKLY FEEDER CATTLE AVERAGES**

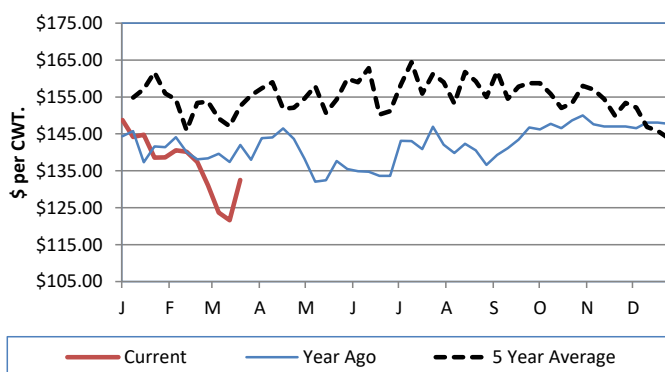
[Cattle Auction Summary](#)

**Feeder Steers (M&L 1)**

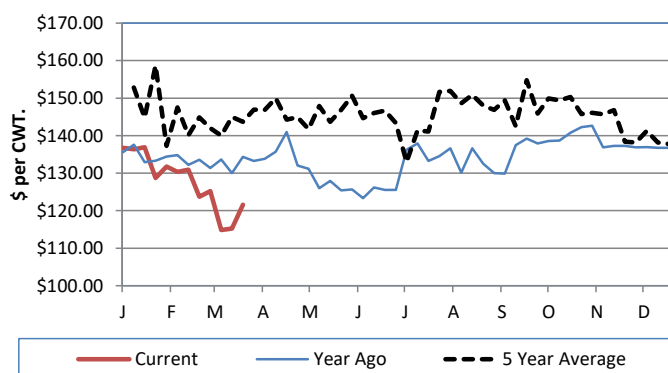
**Feeder Heifers (M&L 1)**

	<u>This Week</u>	<u>Last Week</u>	<u>Year Ago</u>		<u>This Week</u>	<u>Last Week</u>	<u>Year Ago</u>
400-500 lbs.	\$180.79	\$163.94	\$184.66	400-500 lbs.	\$156.01	\$148.82	\$160.97
500-600 lbs.	\$166.42	\$155.43	\$179.32	500-600 lbs.	\$150.83	\$134.97	\$154.54
600-700 lbs.	\$148.56	\$140.86	\$164.07	600-700 lbs.	\$132.43	\$124.44	\$141.36
700-800 lbs.	\$139.50	\$124.84	\$144.28	700-800 lbs.	\$121.62	\$115.26	\$133.27
800-900 lbs.	\$130.13	\$120.03	\$135.68	800-900 lbs.	\$115.64	\$112.81	\$127.93
900-1000 lbs.	\$118.26	\$114.91	\$127.85	900-1000 lbs.	\$111.56	NQ	\$117.24

**Weekly M&L 1 700-900 lb. Feeder Steer Price**



**Weekly M&L 1 700-800 lb. Feeder Heifer Price**



**KANSAS DIRECT FEEDER CATTLE**

[DC LS165](#)

(Current FOB)

	<u>Steers</u>	<u>Heifers</u>
600-700 lbs.	NQ	NQ
700-800 lbs.	NQ	NQ
800-900 lbs.	117.17	110.67

**KANSAS WEEKLY GRAIN BIDS**

	<u>Central KS</u>	<u>Western KS</u>
US NO 1 HR Winter Wheat	4.59-4.94	4.29-4.61
US NO 2 Yellow Corn	3.15-3.46	3.02-3.54
US NO 2 Sorghum	5.34-6.95	4.93-5.73
US NO 2 Soybeans	8.10-8.67	7.70-8.02
Sunflower - Oilseeds (Goodland)		18.75
Cotton - West Texas		45.83

**KANSAS WEEKLY SLAUGHTER CATTLE**

[Cattle Auction Summary](#)

**Slaughter Cows**

	<u>Average</u>	<u>High</u>	<u>Low</u>
Prem White	NQ	NQ	NQ
Breakers	74.41	NQ	NQ
Boners	71.84	73.00	68.65
Lean	49.37	NQ	NQ

**Slaughter Bulls**

	<u>Average</u>	<u>High</u>	<u>Low</u>
YG 1-2	89.60	101.14	73.41

**KANSAS WEEKLY ETHANOL BIDS**

[NW GR115](#)

DDG	160.00-235.00
Modified Wet	NQ
Wet	45.00-65.00

**KANSAS WEEKLY HAY PRICES**

[DC GR310](#)

	<u>Southwest KS</u>	<u>South Central KS</u>
<b>Alfalfa (Dairy)</b>		
Supreme	185.00-226.00	185.00-225.00
Premium	170.00-195.00	170.00-195.00
Ground & Delivered	150.00-165.00	140.00-150.00

**KANSAS WEEKLY WTD AVG CATTLE REPORT**

[LM CT157](#)

	<u>This Week</u>	<u>Last Week</u>	<u>Last Year</u>
Live Str	\$119.58	\$110.22	\$125.35
Live Hfr	\$119.46	\$110.09	\$125.55
Dressed Str	\$190.00	\$175.00	\$206.00
Dressed Hfr	NQ	NQ	NQ

**USDA Livestock Poultry and Grain Market News**

Dodge City, KS

Phone: (620) 227-8881

Email: [dodgecity.lpgmn@ams.usda.gov](mailto:dodgecity.lpgmn@ams.usda.gov)

<http://www.ams.usda.gov/lpsmarketnewspage>