

**THE VISUAL AIDS ON THE FOLLOWING
PAGES ARE FOR REFERENCE ONLY AND
NOT INTENDED FOR OFFICIAL USE.**

**TO PURCHASE OFFICIAL VISUAL AIDS PLEASE CONTACT
THE SPECIALTY CROPS INSPECTION DIVISION'S
EQUIPMENT AND FORMS DEPOT**

**USDA, AMS, FVP, SCI
831 MITTEN ROAD, ROOM 200
BURLINGAME, CA 94010
PHONE: 650-552-9073
FAX: 650-552-9147**

[EQUIPMENT CATALOG](#)

SWEET CHERRIES



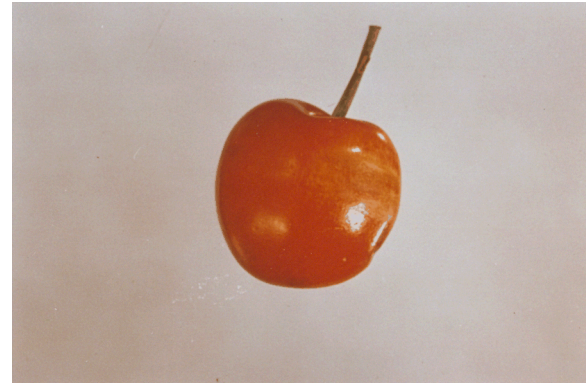
Healed Crack



Crack Not Well Healed



Brown Discoloration

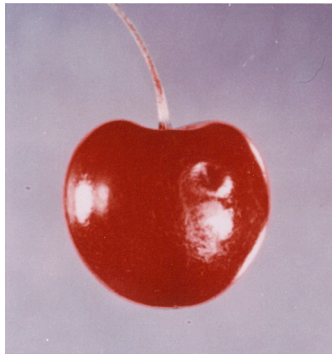


Limbrub

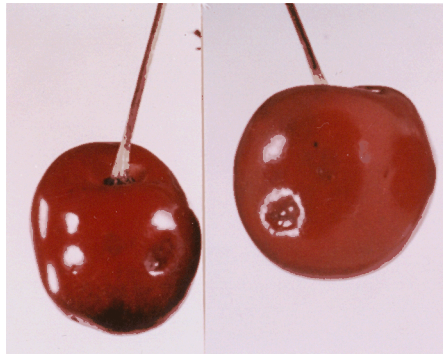
FOR IDENTIFICATION ONLY

**CHR-1-IDENT
DEFECTS
MARCH 1990 (Previously May 1978)**

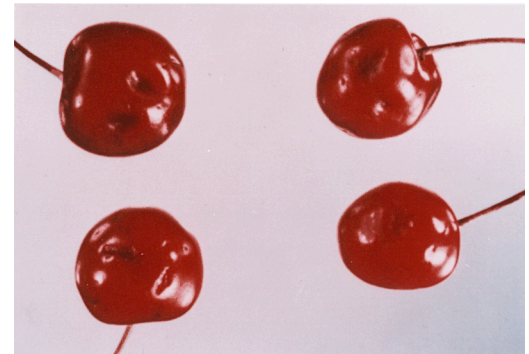
SWEET CHERRIES "PITTING"



**Not Damaged
Max Allowed**



Damaged



Serious Damage



**Not Damaged
Max Allowed**



Damaged

SWEET CHERRIES -- DEFECTS

**Pulled Stem
Fresh Skin Tear**



Serious Damage

**Crack Within
Stem Cavity**



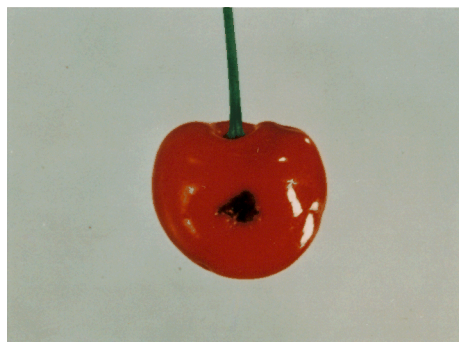
Serious Damage

**Crack Within
Stem Cavity**



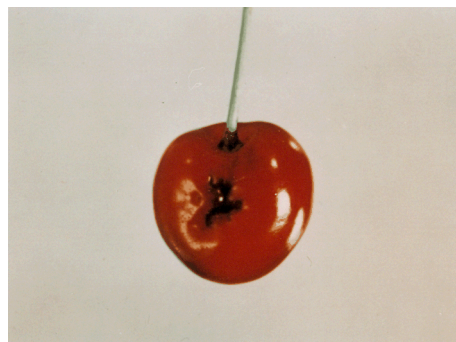
Not Damaged

Insect



Damaged

Insect



Serious Damage

Scar



**Not Damaged
(Lower Limit)**

**CHR-CP-3
Defects**

April 1990 (Previously May 1978, Side I)

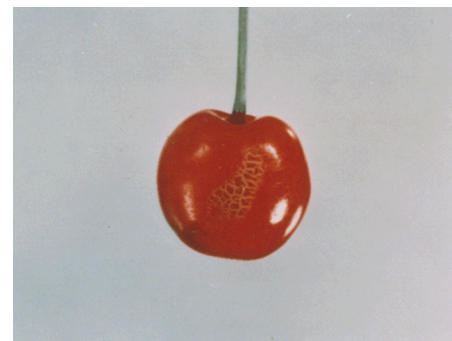
SWEET CHERRIES -- DEFECTS

Scar
(Light fairly smooth)



Not Damaged
(Lower Limit)

Scar
(Dark & rough)



Damaged

Scar
(Light fairly smooth)



Serious Damage

Scar
(Deep)



Serious Damage