

Exhibit ____

Tables 1-7

Graph 1

Documents 1-2 a-e - **3**

Prepared by:

Southeast Milk, Inc.

P.O. 3790

Belleview, Florida 34421

Regarding Amendments to the Appalachian, Florida, and
Southeast Federal Milk Marketing Orders

[Docket No. AO-388-A16, AO-356-A38 and AO-366-A45;
DA-04-07]

EXHIBIT

15

| Table 1. Counties with SMI dairy farms and estimated cows in those counties. | | | | | | |
|--|--------------|-------------------------------|------------------|----------------|-------------|---------------|
| For each of the four hurricanes, if cow numbers listed then that county was declared a disaster area by FEMA. | | | | | | |
| County | Farms | Estimated No. Cows | Hurricane | | | |
| | | | Charley | Frances | Ivan | Jeanne |
| Alachua | 5 | 1,745 | | 1,745 | | |
| Baker | 1 | 502 | | 502 | | |
| Bradford | 1 | 266 | | 266 | | |
| Broward | 1 | 914 | | 914 | | |
| Calhoun | 2 | 345 | | | 345 | |
| Citrus | 1 | 155 | | 155 | | |
| Clay | 2 | 1,816 | | 1,816 | | |
| Desoto | 3 | 2,483 | 2,483 | 2,483 | | |
| Dixie | 1 | 56 | 56 | 56 | | |
| Duval | 5 | 3,120 | 3,120 | 3,120 | | |
| Gilchrist | 7 | 14,797 | | 14,797 | | |
| Glades | 2 | 2,642 | 2,642 | 2,642 | | |
| Hardee | 11 | 8,610 | 8,610 | 8,610 | | 8,610 |
| Hernando | 5 | 2,344 | | 2,344 | | 2,344 |
| Highlands | 7 | 4,561 | 4,561 | 4,561 | | 4,561 |
| Hillsborough | 9 | 2,978 | | 2,978 | | 2,978 |
| Holmes | 3 | 356 | | | 356 | |
| Jackson | 8 | 2,206 | | | 2,206 | |
| Jefferson | 3 | 4,206 | | | | |
| Lafayette | 23 | 11,914 | | | | |
| Lake | 2 | 2,283 | 2,283 | 2,283 | | 2,283 |
| Leon | 1 | 341 | | | 341 | |
| Levy | 4 | 9,666 | 9,666 | 9,666 | | |
| Manatee | 5 | 4,034 | 4,034 | 4,034 | | |
| Marion | 3 | 4,399 | | 4,399 | | 4,399 |
| Nassau | 1 | 366 | | 366 | | |
| Okeechobee | 20 | 28,661 | 28,661 | 28,661 | | 28,661 |
| Pasco | 7 | 3,702 | 3,702 | 3,702 | | 3,702 |
| Polk | 2 | 882 | 882 | 882 | | 882 |
| Putnam | 1 | 1,062 | | 1,062 | | |
| St. Lucie | 1 | 1,571 | | 1,571 | | |
| Sarasota | 1 | 826 | 826 | 826 | | |
| Sumter | 3 | 839 | | 839 | | 839 |
| Suwannee | 16 | 8,127 | | 8,127 | | |
| Volusia | 1 | 664 | 664 | 664 | | 664 |
| Washington | 2 | 310 | | | 310 | |
| total | 170 | 133,749 | 72,191 | 114,071 | 3,558 | 59,923 |

Source: SMI data and FEMA

| Table 2. Milk Receipts by Federal Order 6 Pool Handlers Invoiced by SMI from August 29-September 11 for 2002, 2003, and 2004 | | | | | |
|--|----------------|---|----------------|---|-------------|
| Date - 2004 | Total receipts | Date- 2003 | Total receipts | Date - 2002 | total |
| Sunday, August 29, 2004 | 6,853,906 | Friday, August 29, 2003 | 7,868,265 | Thursday, August 29, 2002 | 7,872,269 |
| Monday, August 30, 2004 | 7,558,984 | Saturday, August 30, 2003 | 7,303,954 | Friday, August 30, 2002 | 8,036,713 |
| Tuesday, August 31, 2004 | 7,885,826 | Sunday, August 31, 2003 | 5,906,693 | Saturday, August 31, 2002 | 7,153,596 |
| Wednesday, September 1, 2004 | 8,296,686 | Monday, September 1, 2003 | 7,290,135 | Sunday, September 1, 2002 | 5,883,372 |
| Thursday, September 2, 2004 | 6,744,418 | Tuesday, September 2, 2003 | 7,754,861 | Monday, September 2, 2002 | 7,318,975 |
| Friday, September 3, 2004 | 5,124,421 | Wednesday, September 3, 2003 | 7,487,042 | Tuesday, September 3, 2002 | 7,336,683 |
| Saturday, September 4, 2004 | 939,443 | Thursday, September 4, 2003 | 7,870,403 | Wednesday, September 4, 2002 | 7,400,706 |
| Sunday, September 5, 2004 | 1,350,112 | Friday, September 5, 2003 | 7,890,632 | Thursday, September 5, 2002 | 8,019,847 |
| Monday, September 6, 2004 | 3,059,693 | Saturday, September 6, 2003 | 7,313,476 | Friday, September 6, 2002 | 7,836,111 |
| Tuesday, September 7, 2004 | 8,737,864 | Sunday, September 7, 2003 | 5,345,309 | Saturday, September 7, 2002 | 7,378,887 |
| Wednesday, September 8, 2004 | 8,882,389 | Monday, September 8, 2003 | 7,199,575 | Sunday, September 8, 2002 | 5,935,765 |
| Thursday, September 9, 2004 | 9,003,204 | Tuesday, September 9, 2003 | 7,459,221 | Monday, September 9, 2002 | 7,312,764 |
| Friday, September 10, 2004 | 9,979,550 | Wednesday, September 10, 2003 | 7,638,741 | Tuesday, September 10, 2002 | 7,283,570 |
| Saturday, September 11, 2004 | 8,781,461 | Thursday, September 11, 2003 | 7,894,491 | Wednesday, September 11, 2002 | 7,039,423 |
| Sunday, September 12, 2004 | 8,357,273 | Friday, September 12, 2004 2003 | 8,804,322 | Thursday, September 12, 2004 2002 | 7,593,549 |
| Monday, September 13, 2004 | 8,814,934 | Saturday, September 13, 2004 2003 | 7,251,319 | Friday, September 13, 2004 2002 | 7,753,682 |
| Tuesday, September 14, 2004 | 7,681,326 | Sunday, September 14, 2004 2003 | 6,256,360 | Saturday, September 14, 2004 2002 | 7,325,950 |
| Wednesday, September 15, 2004 | 8,139,613 | Monday, September 15, 2004 2003 | 7,343,228 | Sunday, September 15, 2004 2002 | 6,258,297 |
| Thursday, September 16, 2004 | 8,293,801 | Tuesday, September 16, 2004 2003 | 8,134,861 | Monday, September 16, 2004 2002 | 7,117,630 |
| Friday, September 17, 2004 | 8,144,565 | Wednesday, September 17, 2004 2003 | 7,621,047 | Tuesday, September 17, 2004 2002 | 8,065,534 |
| Saturday, September 18, 2004 | 7,417,498 | Thursday, September 18, 2004 2003 | 7,827,298 | Wednesday, September 18, 2004 2002 | 7,592,132 |
| total | 150,046,967 | | 155,461,233 | | 153,515,455 |

Graph 1.. Milk Receipts August 29-September 18, 2002-2004

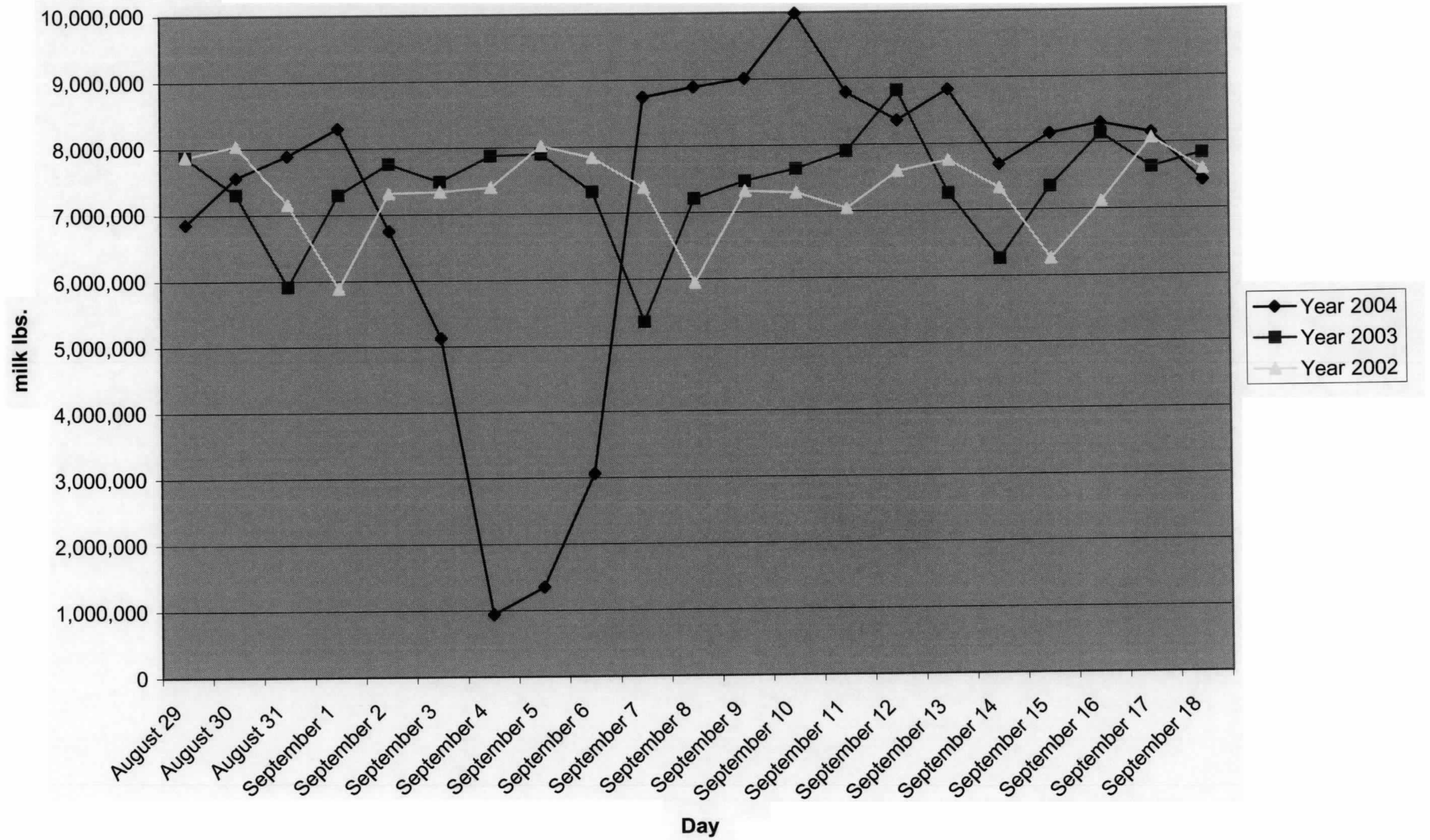


Table 3.

Southeast Milk, Inc.
Extraordinary Milk Movement due to Hurricane Francis
Milk Shipped to other locations from Florida due to Florida plants closed

| <u>Plant Name, City, State</u> | | | <u>Miles</u> | <u>Hauling Cost</u> | <u>Comments</u> |
|--|---------------|--------|--------------|---------------------|--|
| Centennial Dairies, Atlanta, GA | | | | | |
| 9/4/2004 | 48,714 | 364859 | 283 | \$636.75 | *estimate @ \$2.25 |
| 9/5/2004 | 52,540 | 329527 | 338 | \$760.50 | *estimate @ \$2.25 |
| 9/5/2004 | 52,131 | 354248 | 327 | \$735.75 | *estimate @ \$2.25 |
| 9/5/2004 | 47,638 | 354283 | 233 | \$524.25 | *estimate @ \$2.25 |
| 9/5/2004 | 48,460 | 364580 | 294 | \$661.50 | *estimate @ \$2.25 |
| 9/5/2004 | 48,418 | 364581 | 287 | \$645.75 | *estimate @ \$2.25 |
| 9/6/2004 | 48,818 | 301165 | 174 | \$391.67 | |
| 9/6/2004 | <u>49,824</u> | 364381 | 330 | <u>\$742.50</u> | *estimate @ \$2.25 |
| | 396,543 | | | \$5,098.67 | |
| Dairy Fresh Cowarts, AL | | | | | |
| 9/6/2004 | 52,305 | 329568 | 217 | \$488.25 | *estimate @ \$2.25 |
| 9/4/2004 | 37,684 | 353054 | 44 | \$99.00 | *estimate @ \$2.25 |
| 9/5/2004 | 41,114 | 353135 | 58 | \$130.50 | *estimate @ \$2.25 |
| 9/7/2004 | 43,462 | 353136 | 35 | \$78.75 | *estimate @ \$2.25 |
| 9/7/2004 | 50,797 | 353137 | 39 | \$87.75 | *estimate @ \$2.25 |
| 9/4/2004 | 38,534 | 353188 | 39 | \$87.75 | *estimate @ \$2.25 |
| 9/5/2004 | 40,788 | 353189 | 40 | \$90.00 | *estimate @ \$2.25 |
| 9/6/2004 | 40,448 | 353288 | 40 | \$90.00 | *estimate @ \$2.25 |
| 9/7/2004 | 54,866 | 353289 | 40 | \$90.00 | *estimate @ \$2.25 |
| 9/7/2004 | 40,222 | 364584 | 105 | \$236.25 | *estimate @ \$2.25 |
| 9/7/2004 | 48,797 | 364860 | 130 | \$292.50 | *estimate @ \$2.25 |
| 9/7/2004 | 47,542 | 364881 | 59 | \$132.75 | *estimate @ \$2.25 |
| 9/5/2004 | <u>51,416</u> | 379129 | 81 | <u>\$182.25</u> | *estimate @ \$2.25 |
| | 587,975 | | | \$2,085.75 | |
| Land O'Lakes Inc.-Carlisle, PA | | | | | |
| 9/6/2004 | 48,510 | 386209 | 925 | \$2,081.25 | *estimate @ \$2.25 |
| 9/6/2004 | <u>47,242</u> | 386290 | 893 | <u>\$2,009.25</u> | *estimate @ \$2.25 |
| | 95,752 | | | \$4,090.50 | |
| Milnot-Seneca, MO | | | | | |
| 9/4/2004 | 49,140 | 301160 | 652 | \$1,466.69 | |
| 9/4/2004 | <u>51,030</u> | 301309 | 652 | <u>\$1,466.69</u> | |
| | 100,170 | | | \$2,933.38 | |
| Mayfield Dairy, Braselton, GA | | | | | |
| 9/5/2004 | 47,661 | 301163 | 226 | \$508.50 | |
| 9/5/2004 | 48,894 | 365579 | 557 | \$1,254.00 | |
| 9/5/2004 | <u>48,555</u> | 365580 | 557 | <u>\$1,254.00</u> | |
| | 145,110 | | | \$3,016.50 | |
| Ultra Filtration Plant-Baconton, GA - Inbound | | | | | |
| 9/6/2004 | 51,579 | 329562 | | \$0.00 | No claim - farm to market covers inbound |
| 9/4/2004 | 50,205 | 329563 | | \$0.00 | No claim - farm to market covers inbound |
| 9/4/2004 | 50,069 | 329565 | | \$0.00 | No claim - farm to market covers inbound |
| 9/5/2004 | 53,809 | 329566 | | \$0.00 | No claim - farm to market covers inbound |
| 9/6/2004 | 41,546 | 353175 | | \$0.00 | No claim - farm to market covers inbound |
| 9/4/2004 | 50,130 | 354281 | | \$0.00 | No claim - farm to market covers inbound |
| 9/6/2004 | 53,234 | 364378 | | \$0.00 | No claim - farm to market covers inbound |
| 9/6/2004 | 51,183 | 364380 | | \$0.00 | No claim - farm to market covers inbound |
| 9/4/2004 | 51,407 | 364384 | | \$0.00 | No claim - farm to market covers inbound |
| 9/3/2004 | 47,562 | 364457 | | \$0.00 | No claim - farm to market covers inbound |
| 9/6/2004 | 52,530 | 365575 | | \$0.00 | No claim - farm to market covers inbound |
| 9/6/2004 | 52,871 | 365576 | | \$0.00 | No claim - farm to market covers inbound |
| 9/4/2004 | 52,454 | 365577 | | \$0.00 | No claim - farm to market covers inbound |

| | | | | |
|----------|------------------|--------|--------|--|
| 9/6/2004 | 48,173 | 378940 | \$0.00 | No claim - farm to market covers inbound |
| 9/6/2004 | 50,880 | 379043 | \$0.00 | No claim - farm to market covers inbound |
| 9/3/2004 | 49,785 | 379056 | \$0.00 | No claim - farm to market covers inbound |
| 9/4/2004 | 49,413 | 379127 | \$0.00 | No claim - farm to market covers inbound |
| 9/3/2004 | 31,571 | 380160 | \$0.00 | No claim - farm to market covers inbound |
| 9/3/2004 | 52,273 | 383835 | \$0.00 | No claim - farm to market covers inbound |
| 9/4/2004 | 50,933 | 383869 | \$0.00 | No claim - farm to market covers inbound |
| 9/3/2004 | 48,240 | 384296 | \$0.00 | No claim - farm to market covers inbound |
| 9/2/2004 | 48,861 | 384315 | \$0.00 | No claim - farm to market covers inbound |
| 9/3/2004 | 49,360 | 384351 | \$0.00 | No claim - farm to market covers inbound |
| 9/4/2004 | 48,560 | 384352 | \$0.00 | No claim - farm to market covers inbound |
| 9/4/2004 | 50,220 | 384353 | \$0.00 | No claim - farm to market covers inbound |
| 9/4/2004 | 48,280 | 384354 | \$0.00 | No claim - farm to market covers inbound |
| 9/4/2004 | 49,760 | 384355 | \$0.00 | No claim - farm to market covers inbound |
| 9/5/2004 | 48,220 | 384356 | \$0.00 | No claim - farm to market covers inbound |
| 9/5/2004 | 48,100 | 384357 | \$0.00 | No claim - farm to market covers inbound |
| 9/5/2004 | 48,800 | 384358 | \$0.00 | No claim - farm to market covers inbound |
| 9/6/2004 | 49,220 | 384359 | \$0.00 | No claim - farm to market covers inbound |
| 9/6/2004 | 49,500 | 384360 | \$0.00 | No claim - farm to market covers inbound |
| 9/3/2004 | 49,245 | 386202 | \$0.00 | No claim - farm to market covers inbound |
| 9/3/2004 | 48,296 | 386203 | \$0.00 | No claim - farm to market covers inbound |
| 9/3/2004 | 51,224 | 386204 | \$0.00 | No claim - farm to market covers inbound |
| 9/5/2004 | 49,143 | 386210 | \$0.00 | No claim - farm to market covers inbound |
| 9/5/2004 | 48,112 | 386211 | \$0.00 | No claim - farm to market covers inbound |
| 9/5/2004 | 48,553 | 386212 | \$0.00 | No claim - farm to market covers inbound |
| 9/5/2004 | 49,369 | 386291 | \$0.00 | No claim - farm to market covers inbound |
| 9/6/2004 | 51,858 | 392262 | \$0.00 | No claim - farm to market covers inbound |
| 9/6/2004 | 52,339 | 392263 | \$0.00 | No claim - farm to market covers inbound |
| 9/6/2004 | 48,804 | 396288 | \$0.00 | No claim - farm to market covers inbound |
| | <u>2,075,671</u> | | | |

UF Plant outbound from Hurricane Frances

| <i>Delivery Date</i> | <i>Bill of Pounds</i> | <i>Bill of Lading #</i> | <i>Hauling Cost</i> | <i>Plant Name</i> | <i>Product</i> |
|----------------------|-----------------------|-------------------------|---------------------|------------------------|----------------|
| 9/8/2004 | 43,720 | 786 | \$1,054.50 | Glasgow Spray Dry | Raw Milk |
| 9/7/2004 | 48,900 | 783 | \$1,596.00 | Brewster Cheese | Whole UF |
| 9/7/2004 | 49,000 | 779 | \$2,166.00 | Brewster Cheese | Whole UF |
| 9/7/2004 | 50,700 | 781 | \$2,109.63 | Twin County Dairy | Whole UF |
| 9/7/2004 | 48,960 | 784 | \$2,080.50 | Twin County Dairy | Whole UF |
| 9/4/2004 | 48,800 | 774 | \$1,780.00 | Minerva Dairy | Whole UF |
| 9/4/2004 | 46,200 | 777 | \$2,924.10 | Melrose Dairy Proteins | Whole UF |
| 9/4/2004 | 48,920 | 775 | \$2,924.10 | Melrose Dairy Proteins | Whole UF |
| 9/4/2004 | 48,880 | 776 | \$2,924.10 | Melrose Dairy Proteins | Whole UF |
| 9/7/2004 | 52,300 | 782 | \$2,149.53 | Trega Foods-Luxenburg | Whole UF |
| 9/4/2004 | 48,580 | 773 | \$2,450.00 | Mullins Cheese, Inc. | Whole UF |
| 9/7/2004 | 52,240 | 780 | \$2,548.89 | Mullins Cheese, Inc. | Whole UF |
| 9/7/2004 | 48,560 | 785 | \$2,439.60 | Mullins Cheese, Inc. | Whole UF |
| 9/5/2004 | 49,000 | 778 | \$3,235.00 | Cady Cheese | Whole UF |
| | <u>684,760</u> | | <u>\$32,381.95</u> | | |

Table 3. Continued

Publix Super Markets, Dacula, GA

| | | | | | |
|----------|------------------|--------|--------------|--------------------|--------------------|
| 9/4/2004 | 50,138 | 301161 | 157 | \$353.25 | *estimate @ \$2.25 |
| 9/4/2004 | 48,512 | 301162 | 161 | \$362.25 | *estimate @ \$2.25 |
| 9/4/2004 | 49,280 | 301164 | 157 | \$353.25 | *estimate @ \$2.25 |
| 9/4/2004 | 50,310 | 301204 | 157 | \$353.25 | *estimate @ \$2.25 |
| 9/4/2004 | 50,641 | 301312 | 157 | \$353.25 | *estimate @ \$2.25 |
| 9/4/2004 | 49,800 | 301332 | 157 | \$353.25 | *estimate @ \$2.25 |
| 9/4/2004 | 50,709 | 301333 | 157 | \$353.25 | *estimate @ \$2.25 |
| 9/4/2004 | 48,271 | 307035 | 300 | \$675.00 | *estimate @ \$2.25 |
| 9/4/2004 | 45,586 | 386467 | 479 | \$1,077.75 | *estimate @ \$2.25 |
| 9/5/2004 | 50,327 | 301313 | 157 | \$353.25 | *estimate @ \$2.25 |
| 9/5/2004 | 50,311 | 301314 | 158 | \$355.50 | *estimate @ \$2.25 |
| 9/5/2004 | 49,808 | 301315 | 157 | \$353.25 | *estimate @ \$2.25 |
| 9/5/2004 | 50,444 | 301316 | 157 | \$353.25 | *estimate @ \$2.25 |
| 9/5/2004 | 48,902 | 301331 | 221 | \$497.34 | |
| 9/5/2004 | 48,446 | 370183 | 300 | \$675.00 | *estimate @ \$2.25 |
| 9/6/2004 | 48,008 | 301166 | 161 | \$362.25 | *estimate @ \$2.25 |
| 9/6/2004 | 49,140 | 301167 | 157 | \$353.25 | *estimate @ \$2.25 |
| 9/6/2004 | 50,853 | 301168 | 157 | \$353.25 | *estimate @ \$2.25 |
| 9/6/2004 | 50,442 | 301317 | 157 | \$353.25 | *estimate @ \$2.25 |
| 9/6/2004 | 50,006 | 301318 | 157 | \$353.25 | *estimate @ \$2.25 |
| 9/6/2004 | 49,431 | 301334 | 157 | \$353.25 | *estimate @ \$2.25 |
| 9/6/2004 | 51,880 | 301336 | 157 | \$353.25 | *estimate @ \$2.25 |
| 9/6/2004 | 50,238 | 301337 | 157 | \$353.25 | *estimate @ \$2.25 |
| 9/6/2004 | 50,660 | 301338 | 157 | \$353.25 | *estimate @ \$2.25 |
| 9/6/2004 | 49,844 | 301339 | 157 | \$353.25 | *estimate @ \$2.25 |
| 9/6/2004 | 49,760 | 301342 | 157 | \$353.25 | *estimate @ \$2.25 |
| 9/6/2004 | 48,629 | 364583 | 290 | \$652.50 | *estimate @ \$2.25 |
| 9/6/2004 | 47,652 | 380161 | 273 | \$614.25 | *estimate @ \$2.25 |
| 9/6/2004 | 49,911 | 392265 | 443 | \$997.50 | |
| 9/6/2004 | 51,796 | 392268 | 443 | \$997.50 | |
| 9/6/2004 | 50,652 | 392269 | 443 | \$997.50 | |
| 9/8/2004 | 52,187 | 392283 | 443 | \$997.50 | |
| | <u>1,592,574</u> | | <u>7,099</u> | <u>\$15,973.59</u> | |

Barber Dairy-Birmingham, AL

| | | | | | |
|----------|----------------|--------|--------------|-------------------|--------------------------|
| | | | 0 | | |
| 9/4/2004 | 51,061 | 364379 | 437 | \$983.25 | *estimate miles @ \$2.25 |
| 9/4/2004 | 49,116 | 364858 | 339 | \$763.80 | |
| 9/5/2004 | 48,447 | 329526 | 339 | \$763.80 | |
| | <u>148,624</u> | | <u>1,116</u> | <u>\$2,510.85</u> | |

Blue Grass-Glasgow KY

| | | | | | |
|----------|--------|--------|-------|------------|--------------------------|
| | | | 0 | | |
| 9/3/2004 | 49,528 | 301330 | 410 | \$921.40 | |
| 9/3/2004 | 45,743 | 376125 | 144 | \$324.50 | *estimate miles @ \$2.25 |
| 9/3/2004 | 43,021 | 376214 | 144 | \$324.50 | *estimate miles @ \$2.25 |
| 9/4/2004 | 53,770 | 301205 | 410 | \$921.40 | |
| 9/4/2004 | 44,458 | 329564 | 622 | \$1,399.50 | *estimate miles @ \$2.25 |
| 9/4/2004 | 40,851 | 353053 | 578 | \$1,301.30 | |
| 9/4/2004 | 38,974 | 353134 | 578 | \$1,301.30 | |
| 9/4/2004 | 50,924 | 364857 | 578 | \$1,300.50 | *estimate miles @ \$2.25 |
| 9/4/2004 | 45,376 | 376188 | 144 | \$324.50 | *estimate miles @ \$2.25 |
| 9/4/2004 | 40,937 | 376215 | 144 | \$324.50 | *estimate miles @ \$2.25 |
| 9/4/2004 | 48,349 | 386205 | 760 | \$1,710.00 | |
| 9/4/2004 | 48,418 | 386289 | 559 | \$1,257.30 | |
| 9/4/2004 | 48,374 | 394143 | 578 | \$1,300.50 | *estimate miles @ \$2.25 |
| 9/5/2004 | 48,960 | 301202 | 1,085 | \$2,440.80 | |
| 9/5/2004 | 49,220 | 301308 | 1,035 | \$2,327.80 | |
| 9/5/2004 | 49,900 | 301329 | 1,035 | \$2,327.80 | |

Table 3. Continued

| | | | | | |
|----------|---------------|---------|-----|-----------------|--------------------------|
| 9/5/2004 | 41,844 | 354250 | 624 | \$1,404.00 | *estimate miles @ \$2.25 |
| 9/5/2004 | 46,003 | 376129 | 162 | \$364.50 | *estimate miles @ \$2.25 |
| 9/5/2004 | 43,629 | 376216 | 162 | \$364.50 | *estimate miles @ \$2.25 |
| 9/5/2004 | 48,628 | 379045 | 578 | \$1,300.50 | *estimate miles @ \$2.25 |
| 9/5/2004 | 48,897 | 394097 | 576 | \$1,296.00 | *estimate miles @ \$2.25 |
| 9/5/2004 | 47,206 | 394099 | 578 | \$1,300.50 | *estimate miles @ \$2.25 |
| 9/5/2004 | 48,302 | 394210 | 760 | \$1,710.00 | |
| 9/5/2004 | 51,067 | 394211 | 52 | \$118.00 | *estimate miles @ \$2.25 |
| 9/5/2004 | 31,829 | 1006126 | 162 | \$364.50 | *estimate miles @ \$2.26 |
| 9/6/2004 | 34,346 | 364582 | 555 | \$1,248.75 | *estimate miles @ \$2.25 |
| 9/6/2004 | 49,500 | 379047 | 489 | \$1,100.25 | *estimate miles @ \$2.25 |
| 9/6/2004 | 47,207 | 386324 | 760 | \$1,710.00 | |
| 9/6/2004 | <u>32,084</u> | 1006101 | 162 | <u>\$364.50</u> | *estimate miles @ \$2.25 |
| | 1,317,345 | | | \$32,453.60 | |

Grand Total 6,459,764 \$100,544.79

| Table 4. | | | | | | |
|--|------------------|-------------|---------------------|--------------------------------------|----------------------------------|-----------------------|
| Southeast Milk, Inc. | | | | | | |
| Milk Shipped to other locations from Florida due to Florida plants closed | | | | | | |
| Estimated Price Loss | | | | | | |
| September 2004 Prices | @3.5% | | | | | |
| Estimated Order 6 Uniform | \$17.25 | | | | | |
| September Class 4 | \$13.00 | | | | | |
| Class 3 | \$14.72 | | | | | |
| Class 2 | \$13.66 | | | | | |
| Central Florida Net Premium | \$2.12 | | | | | |
| Plant Name, City, State | Pounds | Rate | Rec. Value | Estimated Central Florida | Central Florida Value | Price Loss |
| Centennial Dairies, Atlanta, GA | 396,543 | \$10.75 | \$42,628.37 | \$19.37 | \$76,810.38 | (\$34,182.01) |
| Dairy Fresh Cowarts, AL | 587,975 | \$10.75 | \$63,207.31 | \$19.37 | \$113,890.76 | (\$50,683.45) |
| Land O'Lakes Inc.-Carlisle, PA | 95,752 | \$12.75 | \$12,208.38 | \$19.37 | \$18,547.16 | (\$6,338.78) |
| Milnot-Seneca, MO | 100,170 | \$14.00 | \$14,023.80 | \$19.37 | \$19,402.93 | (\$5,379.13) |
| Mayfield Dairy, Braselton, GA | 145,110 | \$10.75 | \$15,599.33 | \$19.37 | \$28,107.81 | (\$12,508.48) |
| Publix Super Markets, Dacula, GA | 1,592,574 | \$13.00 | \$207,034.62 | \$19.37 | \$308,481.58 | (\$101,446.96) |
| Barber Dairy-Birmingham, AL | 148,624 | \$10.75 | \$15,977.08 | \$19.37 | \$28,788.47 | (\$12,811.39) |
| Ultrafiltration plant | 2,075,671 | \$14.73 | \$305,746.34 | \$19.37 | \$402,057.47 | (\$96,311.13) |
| Blue Grass-Glasgow, KY | 1,317,345 | \$12.66 | \$166,775.88 | \$19.37 | \$255,169.73 | (\$88,393.85) |
| Total | 6,459,764 | | \$843,201.11 | | \$1,251,256.29 | (\$408,055.18) |

| Table 5. | | | | | | | |
|--------------------------------------|--------|-----------|------------|--------|------------------|-------------|--------------|
| Southeast Milk, Inc. | | | | | | | |
| Milk Dumped Due to Hurricane Francis | | | | | | | |
| Delivriy | Ticket | Total | Origin | Origin | Orgin | Destination | |
| Date | Number | Pounds | County | State | Plant | Plant | Comments |
| 9/2/2004 | 364755 | 45,639 | Dixie | FL | T.G. Lee Orlando | Dumped | from trailer |
| 9/2/2004 | 364756 | 52,300 | Jefferson | FL | T.G. Lee Orlando | Dumped | from trailer |
| 9/2/2004 | 370118 | 44,702 | Alachua | FL | T.G. Lee Orlando | Dumped | from trailer |
| 9/3/2004 | 354246 | 2,846 | Gilchrist | FL | | Dumped | from trailer |
| 9/3/2004 | 370119 | 44,750 | Sumter | FL | T.G. Lee Orlando | Dumped | from trailer |
| 9/4/2004 | 383119 | 37,937 | Nassau | FL | Gustafson | Dumped | from trailer |
| 9/4/2004 | 386764 | 32,611 | Hillsboro | FL | | Dumped | from trailer |
| | | 260,785 | | | | | |
| 9/6/2004 | n/a | 15,358 | Decatur | GA | n/a | Dumped | at farm |
| 9/6/2004 | n/a | 6,952 | Jefferson | FL | n/a | Dumped | at farm |
| 9/6/2004 | n/a | 48,458 | Jefferson | FL | n/a | Dumped | at farm |
| 9/6/2004 | n/a | 25,775 | Jefferson | FL | n/a | Dumped | at farm |
| 9/6/2004 | n/a | 50,941 | Lowndes | GA | n/a | Dumped | at farm |
| 9/6/2004 | n/a | 6,839 | Washinton | FL | n/a | Dumped | at farm |
| 9/6/2004 | n/a | 7,704 | Jackson | FL | n/a | Dumped | at farm |
| 9/6/2004 | n/a | 12,070 | Suwannee | FL | n/a | Dumped | at farm |
| 9/6/2004 | n/a | 23,126 | Hernando | FL | n/a | Dumped | at farm |
| 9/6/2004 | n/a | 9,077 | Hernando | FL | n/a | Dumped | at farm |
| 9/6/2004 | n/a | 12,000 | Polk | FL | n/a | Dumped | at farm |
| 9/6/2004 | n/a | 36,000 | Hernando | FL | n/a | Dumped | at farm |
| 9/6/2004 | n/a | 25,958 | Gilchrist | FL | n/a | Dumped | at farm |
| 9/6/2004 | n/a | 7,500 | Pasco | FL | n/a | Dumped | at farm |
| 9/6/2004 | n/a | 10,000 | Sumter | FL | n/a | Dumped | at farm |
| 9/6/2004 | n/a | 15,000 | Sumter | FL | n/a | Dumped | at farm |
| 9/6/2004 | n/a | 26,578 | Marion | FL | n/a | Dumped | at farm |
| 9/6/2004 | n/a | 10,093 | Lafayette | FL | n/a | Dumped | at farm |
| 9/6/2004 | n/a | 12,773 | Lafayette | FL | n/a | Dumped | at farm |
| 9/6/2004 | n/a | 6,000 | Suwannee | FL | n/a | Dumped | at farm |
| 9/6/2004 | n/a | 10,000 | Marion | FL | n/a | Dumped | at farm |
| 9/6/2004 | n/a | 16,000 | Marion | FL | n/a | Dumped | at farm |
| 9/6/2004 | n/a | 47,895 | Bradford | FL | n/a | Dumped | at farm |
| 9/6/2004 | n/a | 12,000 | Lafayette | FL | n/a | Dumped | at farm |
| 9/6/2004 | n/a | 2,300 | Alachua | FL | n/a | Dumped | at farm |
| 9/6/2004 | n/a | 2,439 | Duval | FL | n/a | Dumped | at farm |
| 9/6/2004 | n/a | 5,000 | Suwannee | FL | n/a | Dumped | at farm |
| 9/6/2004 | n/a | 53,124 | Highlands | FL | n/a | Dumped | at farm |
| 9/6/2004 | n/a | 86,000 | Okeechobee | FL | n/a | Dumped | at farm |
| 9/6/2004 | n/a | 69,691 | Hardee | FL | n/a | Dumped | at farm |
| 9/6/2004 | n/a | 89,440 | Okeechobee | FL | n/a | Dumped | at farm |
| 9/6/2004 | n/a | 55,497 | Glades | FL | n/a | Dumped | at farm |
| 9/6/2004 | n/a | 22,252 | Glades | FL | n/a | Dumped | at farm |
| 9/6/2004 | n/a | 33,000 | Manatee | FL | n/a | Dumped | at farm |
| 9/6/2004 | n/a | 43,620 | Highlands | FL | n/a | Dumped | at farm |
| 9/6/2004 | n/a | 103,480 | Okeechobee | FL | n/a | Dumped | at farm |
| 9/6/2004 | n/a | 49,098 | Highlands | FL | n/a | Dumped | at farm |
| 9/6/2004 | n/a | 38,700 | Highlands | FL | n/a | Dumped | at farm |
| 9/6/2004 | n/a | 52,460 | Okeechobee | FL | n/a | Dumped | at farm |
| 9/6/2004 | n/a | 36,590 | Manatee | FL | n/a | Dumped | at farm |
| 9/6/2004 | n/a | 1,000,000 | Okeechobee | FL | n/a | Dumped | at farm |
| 9/6/2004 | n/a | 26,000 | Desoto | FL | n/a | Dumped | at farm |
| 9/6/2004 | n/a | 65,127 | Desoto | FL | n/a | Dumped | at farm |
| 9/6/2004 | n/a | 82,329 | Hardee | FL | n/a | Dumped | at farm |
| 9/6/2004 | n/a | 105,427 | Okeechobee | FL | n/a | Dumped | at farm |
| 9/6/2004 | n/a | 47,850 | Okeechobee | FL | n/a | Dumped | at farm |
| 9/6/2004 | n/a | 43,000 | Highlands | FL | n/a | Dumped | at farm |
| 9/6/2004 | n/a | 8,600 | Suwannee | FL | n/a | Dumped | at farm |
| 9/6/2004 | n/a | 51,695 | Desoto | FL | n/a | Dumped | at farm |
| 9/6/2004 | n/a | 51,800 | Okeechobee | FL | n/a | Dumped | at farm |
| 9/6/2004 | n/a | 21,179 | Broward | FL | n/a | Dumped | at farm |
| 9/6/2004 | n/a | 107,500 | Okeechobee | FL | n/a | Dumped | at farm |
| | | 2,807,295 | | | | | |
| GRAND TOTALS | | 3,068,080 | | | | | |

Table 6. Southeast Milk, Inc. Imported Milk September 2004 and Comparable Week in 2003

| | 2004 | 2003 | % Difference | | | |
|--------------------------|--------------------|-------------|---------------------|--|--|--|
| | (no. loads) | | | | | |
| Week ending September 4 | 200 | 235 | -15% | | | |
| Week ending September 11 | 131 | 159 | -18% | | | |
| Week ending September 18 | 302 | 192 | 57% | | | |
| Week ending September 25 | 245 | 206 | 19% | | | |

Table 7. ESTIMATED ADDITIONAL SUPPLEMENTAL MILK TRANSPORTATION COST RESULTING FROM HURRICANES

HURRICANES CHARLEY, FRANCES, IVAN and JEANNE, Federal Order No. 6

| <u>Delv. Date</u> | <u>Origination County</u> | <u>Origination State</u> | <u>Orig Plant / Coop / Org.</u> | <u>Destination plant, city & state</u> | <u>No. Loads</u> | <u>Transport Mileage</u> | <u>Haul rate per mile</u> | <u>Haul cost per load</u> | <u>Total Haul Cost</u> |
|-------------------|---------------------------|--------------------------|---------------------------------|--|------------------|--------------------------|---------------------------|---------------------------|------------------------|
| 9/2/2004 | Lancaster | PA | LOFTCO | Gustafson's LLC, Gr Cove Springs, FL | 1 | 857 | | | \$1,140 |
| 9/7/2004 | Chaves | NM | SMP | Publix Super Market Lakeland, FL | 1 | 1576 | \$2.060 | \$3,247 | \$3,247 |
| 9/7/2004 | Chaves | NM | SMP | Publix Super Market Lakeland, FL | 1 | 1576 | \$2.060 | \$3,247 | \$3,247 |
| 9/7/2004 | Chaves | NM | SMP | Publix Super Market Lakeland, FL | 1 | 1576 | \$2.060 | \$3,247 | \$3,247 |
| 9/7/2004 | Roosevelt | NM | SMP | Publix Super Market Lakeland, FL | 1 | 1576 | \$2.110 | \$3,325 | \$3,325 |
| 9/8/2004 | | | MDVA | Gustafson's LLC, Gr Cove Springs, FL | 1 | 761 | \$2.250 | \$1,712 | \$1,712 |
| 9/8/2004 | Cumberland | PA | Land-O-Lakes, Carlisle | McArthur Dairy, Miami, FL | 1 | 1196 | \$2.250 | \$2,691 | \$2,691 |
| 9/8/2004 | Chaves | NM | SMP | Publix Super Market Lakeland, FL | 1 | 1576 | \$2.060 | \$3,247 | \$3,247 |
| 9/8/2004 | Chaves | NM | SMP | Publix Super Market Lakeland, FL | 1 | 1576 | \$2.060 | \$3,247 | \$3,247 |
| 9/8/2004 | Chaves | NM | SMP | Publix Super Market Lakeland, FL | 1 | 1576 | \$2.060 | \$3,247 | \$3,247 |
| 9/9/2004 | | | MDVA | Gustafson's LLC, Gr Cove Springs, FL | 1 | 761 | \$2.250 | \$1,712 | \$1,712 |
| 9/9/2004 | | | MDVA | Gustafson's LLC, Gr Cove Springs, FL | 1 | 761 | \$2.250 | \$1,712 | \$1,712 |
| 9/9/2004 | | TX | DFA-SWC | McArthur Dairy Inc., Miami, FL | 1 | 1329 | \$2.250 | \$2,990 | \$2,990 |
| 9/9/2004 | Cumberland | PA | Land-O-Lakes, Carlisle | McArthur Dairy, Miami, FL | 1 | 1196 | \$2.250 | \$2,691 | \$2,691 |
| 9/9/2004 | Cumberland | PA | Land-O-Lakes, Carlisle | McArthur Dairy, Miami, FL | 1 | 1196 | \$2.250 | \$2,691 | \$2,691 |
| 9/9/2004 | Cumberland | PA | Land-O-Lakes, Carlisle | McArthur Dairy, Miami, FL | 1 | 1196 | \$2.250 | \$2,691 | \$2,691 |
| 9/9/2004 | Curry | NM | SMP | Publix Super Market Lakeland, FL | 1 | 1576 | \$2.182 | \$3,439 | \$3,439 |
| 9/10/2004 | | | MDVA | Gustafson's LLC, Gr Cove Springs, FL | 1 | 761 | \$2.250 | \$1,712 | \$1,712 |
| 9/10/2004 | Grayson | TX | LSMP | Gustafson's LLC-Gr Cove Springs, FL | 1 | 1149 | \$2.270 | \$2,608 | \$2,608 |
| 9/10/2004 | Comanche | TX | DFA-SWC | McArthur Dairy Inc., Miami, FL | 1 | 1329 | \$2.180 | \$2,897 | \$2,897 |
| 9/10/2004 | Erath | TX | DFA-SWC | McArthur Dairy Inc., Miami, FL | 1 | 1329 | \$2.140 | \$2,844 | \$2,844 |
| 9/10/2004 | Erath | TX | DFA-SWC | McArthur Dairy Inc., Miami, FL | 1 | 1329 | \$2.140 | \$2,844 | \$2,844 |
| 9/10/2004 | Lamb | TX | DFA-SWC | McArthur Dairy Inc., Miami, FL | 1 | 1329 | \$2.020 | \$2,685 | \$2,685 |
| 9/10/2004 | Lamb | TX | DFA-SWC | McArthur Dairy Inc., Miami, FL | 1 | 1329 | \$2.020 | \$2,685 | \$2,685 |
| 9/10/2004 | Cass | IN | CDP | McArthur Dairy, Miami FL | 1 | 1285 | \$2.250 | \$2,891 | \$2,891 |
| 9/10/2004 | Jasper | IN | CDP | McArthur Dairy, Miami FL | 1 | 1316 | \$2.250 | \$2,961 | \$2,961 |
| 9/10/2004 | Jasper | IN | CDP | McArthur Dairy, Miami FL | 1 | 1316 | \$2.250 | \$2,961 | \$2,961 |
| 9/10/2004 | Jasper | IN | CDP | McArthur Dairy, Miami FL | 1 | 1316 | \$2.250 | \$2,961 | \$2,961 |
| 9/10/2004 | Jasper | IN | CDP | McArthur Dairy, Miami FL | 1 | 1316 | \$2.250 | \$2,961 | \$2,961 |
| 9/10/2004 | Jasper | IN | CDP | McArthur Dairy, Miami FL | 1 | 1316 | \$2.250 | \$2,961 | \$2,961 |
| 9/10/2004 | Jasper | IN | CDP | McArthur Dairy, Miami FL | 1 | 1316 | \$2.250 | \$2,961 | \$2,961 |
| 9/10/2004 | Jasper | IN | CDP | McArthur Dairy, Miami FL | 1 | 1316 | \$2.250 | \$2,961 | \$2,961 |
| 9/10/2004 | Jasper | IN | CDP | McArthur Dairy, Miami FL | 1 | 1316 | \$2.250 | \$2,961 | \$2,961 |
| 9/10/2004 | Jasper | IN | CDP | McArthur Dairy, Miami FL | 1 | 1316 | \$2.250 | \$2,961 | \$2,961 |
| 9/10/2004 | Williams | OH | CDP | McArthur Dairy, Miami FL | 1 | 1361 | \$2.250 | \$3,062 | \$3,062 |

| | | | | | | | | | |
|-----------|------------|----|------------------------------|--|---|------|---------|---------|---------|
| 9/10/2004 | Kalamazoo | MI | CDP | McArthur Dairy, Miami FL | 1 | 1437 | \$2,250 | \$3,233 | \$3,233 |
| 9/10/2004 | Muskegon | MI | CDP | McArthur Dairy, Miami FL | 1 | 1478 | \$2,250 | \$3,326 | \$3,326 |
| 9/10/2004 | Muskegon | MI | CDP | McArthur Dairy, Miami FL | 1 | 1489 | \$2,250 | \$3,350 | \$3,350 |
| 9/10/2004 | Muskegon | MI | CDP | McArthur Dairy, Miami FL | 1 | 1489 | \$2,250 | \$3,350 | \$3,350 |
| 9/10/2004 | Montcalm | MI | CDP | McArthur Dairy, Miami FL | 1 | 1501 | \$2,250 | \$3,377 | \$3,377 |
| 9/10/2004 | Cumberland | PA | Land-O-Lakes, Carlisle | McArthur Dairy, Miami, FL | 1 | 1196 | \$2,250 | \$2,691 | \$2,691 |
| 9/10/2004 | Cumberland | PA | Land-O-Lakes, Carlisle | McArthur Dairy, Miami, FL | 1 | 1196 | \$2,250 | \$2,691 | \$2,691 |
| 9/10/2004 | Cumberland | PA | Land-O-Lakes, Carlisle | McArthur Dairy, Miami, FL | 1 | 1196 | \$2,250 | \$2,691 | \$2,691 |
| 9/10/2004 | Cumberland | PA | Land-O-Lakes, Carlisle | McArthur Dairy, Miami, FL | 1 | 1196 | \$2,250 | \$2,691 | \$2,691 |
| 9/10/2004 | Cumberland | PA | Land-O-Lakes, Carlisle | McArthur Dairy, Miami, FL | 1 | 1196 | \$2,250 | \$2,691 | \$2,691 |
| 9/10/2004 | Belmont | OH | United Dairy, Martin's Ferry | Publix Super Market Lakeland, FL | 1 | 1017 | \$2,250 | \$2,288 | \$2,288 |
| 9/10/2004 | Belmont | OH | United Dairy, Martin's Ferry | Publix Super Market Lakeland, FL | 1 | 1017 | \$2,250 | \$2,288 | \$2,288 |
| 9/10/2004 | Belmont | OH | United Dairy, Martin's Ferry | Publix Super Market Lakeland, FL | 1 | 1017 | \$2,250 | \$2,288 | \$2,288 |
| 9/10/2004 | Cumberland | PA | Land-O-Lakes, Carlisle | Publix Super Markets, Deerfield Beach, F | 1 | 1159 | \$2,250 | \$2,608 | \$2,608 |
| 9/10/2004 | Cumberland | PA | Land-O-Lakes, Carlisle | Publix Super Markets, Deerfield Beach, F | 1 | 1159 | \$2,250 | \$2,608 | \$2,608 |
| 9/10/2004 | Cumberland | PA | Land-O-Lakes, Carlisle | Publix Super Markets, Deerfield Beach, F | 1 | 1159 | \$2,250 | \$2,608 | \$2,608 |
| 9/10/2004 | Lancaster | PA | LANCO | T. G. Lee Foods Orange City | 1 | 942 | \$2,250 | \$2,120 | \$2,120 |
| 9/10/2004 | Cumberland | PA | Land-O-Lakes, Carlisle | T. G. Lee Foods Orlando, FL | 1 | 991 | \$2,250 | \$2,230 | \$2,230 |
| 9/10/2004 | Cumberland | PA | Land-O-Lakes, Carlisle | T. G. Lee Foods Orlando, FL | 1 | 991 | \$2,250 | \$2,230 | \$2,230 |
| 9/10/2004 | Cumberland | PA | Land-O-Lakes, Carlisle | T. G. Lee Foods Orlando, FL | 1 | 991 | \$2,250 | \$2,230 | \$2,230 |
| 9/10/2004 | Cumberland | PA | Land-O-Lakes, Carlisle | T. G. Lee Foods Orlando, FL | 1 | 991 | \$2,250 | \$2,230 | \$2,230 |
| 9/10/2004 | Cumberland | PA | Land-O-Lakes, Carlisle | T. G. Lee Foods Orlando, FL | 1 | 991 | \$2,250 | \$2,230 | \$2,230 |
| 9/10/2004 | Cumberland | PA | Land-O-Lakes, Carlisle | T. G. Lee Foods Orlando, FL | 1 | 991 | \$2,250 | \$2,230 | \$2,230 |
| 9/10/2004 | Cumberland | PA | Land-O-Lakes, Carlisle | Velda Farms, Miami, FL | 1 | 1196 | \$2,250 | \$2,691 | \$2,691 |
| 9/10/2004 | Cumberland | PA | Land-O-Lakes, Carlisle | Velda Farms, Miami, FL | 1 | 1196 | \$2,250 | \$2,691 | \$2,691 |
| 9/10/2004 | Cumberland | PA | Land-O-Lakes, Carlisle | Velda Farms, Miami, FL | 1 | 1196 | \$2,250 | \$2,691 | \$2,691 |
| 9/10/2004 | Cumberland | PA | Land-O-Lakes, Carlisle | Velda Farms, Miami, FL | 1 | 1196 | \$2,250 | \$2,691 | \$2,691 |
| 9/10/2004 | Houston | MN | Land-O-Lakes, Caledonia | Velda Farms, Winter Haven, FL | 1 | 1504 | \$2,250 | \$3,384 | \$3,384 |
| 9/10/2004 | Houston | MN | Land-O-Lakes, Caledonia | Velda Farms, Winter Haven, FL | 1 | 1504 | \$2,250 | \$3,384 | \$3,384 |
| 9/10/2004 | Cumberland | PA | Land-O-Lakes, Carlisle | Velda Farms, Winter Haven, FL | 1 | 1041 | \$2,250 | \$2,342 | \$2,342 |
| 9/10/2004 | Cumberland | PA | Land-O-Lakes, Carlisle | Velda Farms, Winter Haven, FL | 1 | 1041 | \$2,250 | \$2,342 | \$2,342 |
| 9/10/2004 | Cumberland | PA | Land-O-Lakes, Carlisle | Velda Farms, Winter Haven, FL | 1 | 1041 | \$2,250 | \$2,342 | \$2,342 |
| 9/10/2004 | Cumberland | PA | Land-O-Lakes, Carlisle | Velda Farms, Winter Haven, FL | 1 | 1041 | \$2,250 | \$2,342 | \$2,342 |
| 9/10/2004 | Cumberland | PA | Land-O-Lakes, Carlisle | Velda Farms, Winter Haven, FL | 1 | 1041 | \$2,250 | \$2,342 | \$2,342 |
| 9/10/2004 | Cumberland | PA | Land-O-Lakes, Carlisle | Velda Farms, Winter Haven, FL | 1 | 1041 | \$2,250 | \$2,342 | \$2,342 |
| 9/10/2004 | Cumberland | PA | Land-O-Lakes, Carlisle | Velda Farms, Winter Haven, FL | 1 | 1041 | \$2,250 | \$2,342 | \$2,342 |
| 9/10/2004 | Cumberland | PA | Land-O-Lakes, Carlisle | Velda Farms, Winter Haven, FL | 1 | 1041 | \$2,250 | \$2,342 | \$2,342 |
| 9/10/2004 | Cumberland | PA | Land-O-Lakes, Carlisle | Velda Farms, Winter Haven, FL | 1 | 1041 | \$2,250 | \$2,342 | \$2,342 |
| 9/11/2004 | | TX | DFA-SWC | McArthur Dairy Inc., Miami, FL | 1 | 1329 | \$2,250 | \$2,990 | \$2,990 |
| 9/11/2004 | | TX | DFA-SWC | McArthur Dairy Inc., Miami, FL | 1 | 1329 | \$2,250 | \$2,990 | \$2,990 |
| 9/11/2004 | Dodge | WI | Alto - Waupun | Publix Super Market Lakeland, FL | 1 | 1337 | \$2,250 | \$3,008 | \$3,008 |
| 9/11/2004 | Dodge | WI | Alto - Waupun | Publix Super Market Lakeland, FL | 1 | 1337 | \$2,250 | \$3,008 | \$3,008 |
| 9/11/2004 | Madison | NY | Quennsboro, Canastota | Publix Super Market Lakeland, FL | 1 | 1288 | \$2,250 | \$2,898 | \$2,898 |

| | | | | | | | | | |
|-----------|------------|----|-----------------------------|--|---|-------|---------|---------|---------|
| 9/11/2004 | Belmont | OH | United Dairy,Martin's Ferry | Publix Super Market Lakeland, FL | 1 | 1017 | \$2.250 | \$2,288 | \$2,288 |
| 9/11/2004 | Belmont | OH | United Dairy,Martin's Ferry | Publix Super Market Lakeland, FL | 1 | 1017 | \$2.250 | \$2,288 | \$2,288 |
| 9/11/2004 | Belmont | OH | United Dairy,Martin's Ferry | Publix Super Market Lakeland, FL | 1 | 1017 | \$2.250 | \$2,288 | \$2,288 |
| 9/11/2004 | Cumberland | PA | Land-O-Lakes, Carlisle | Publix Super Markets, Deerfield Beach, F | 1 | 1159 | \$2.250 | \$2,608 | \$2,608 |
| 9/11/2004 | Erath | TX | DFA-SWC | T.G. Lee Foods Orlando, FL | 1 | 1104 | \$2.190 | \$2,418 | \$2,418 |
| 9/11/2004 | Comanche | TX | DFA-SWC | T.G. Lee Foods Orlando, FL | 1 | 1104 | \$2.230 | \$2,462 | \$2,462 |
| 9/11/2004 | Cumberland | PA | Land-O-Lakes, Carlisle | Velda Farms, Miami, FL | 1 | 1196 | \$2.250 | \$2,691 | \$2,691 |
| 9/11/2004 | Cumberland | PA | Land-O-Lakes, Carlisle | Velda Farms, Miami, FL | 1 | 1196 | \$2.250 | \$2,691 | \$2,691 |
| 9/11/2004 | Houston | MN | Land-O-Lakes, Caledonia | Velda Farms, Winter Haven, FL | 1 | 1504 | \$2.250 | \$3,384 | \$3,384 |
| 9/11/2004 | Houston | MN | Land-O-Lakes, Caledonia | Velda Farms, Winter Haven, FL | 1 | 1504 | \$2.250 | \$3,384 | \$3,384 |
| 9/11/2004 | Cumberland | PA | Land-O-Lakes, Carlisle | Velda Farms, Winter Haven, FL | 1 | 1041 | \$2.250 | \$2,342 | \$2,342 |
| 9/11/2004 | Cumberland | PA | Land-O-Lakes, Carlisle | Velda Farms, Winter Haven, FL | 1 | 1041 | \$2.250 | \$2,342 | \$2,342 |
| 9/11/2004 | Cumberland | PA | Land-O-Lakes, Carlisle | Velda Farms, Winter Haven, FL | 1 | 1041 | \$2.250 | \$2,342 | \$2,342 |
| 9/12/2004 | Comanche | TX | DFA-SWC | McArthur Dairy Inc., Miami, FL | 1 | 1329 | \$2.180 | \$2,897 | \$2,897 |
| 9/12/2004 | Erath | TX | DFA-SWC | McArthur Dairy Inc., Miami, FL | 1 | 1329 | \$2.190 | \$2,911 | \$2,911 |
| 9/12/2004 | Erath | TX | DFA-SWC | McArthur Dairy Inc., Miami, FL | 1 | 1329 | \$2.190 | \$2,911 | \$2,911 |
| 9/12/2004 | Madison | NY | Quennsboro, Canastota | Publix Super Market Lakeland, FL | 1 | 1288 | \$2.250 | \$2,898 | \$2,898 |
| 9/12/2004 | Madison | NY | Quennsboro, Canastota | Publix Super Market Lakeland, FL | 1 | 1288 | \$2.250 | \$2,898 | \$2,898 |
| 9/12/2004 | Mills | TX | DFA-SWC | T.G. Lee Foods Orlando, FL | 1 | 1104 | \$2.190 | \$2,418 | \$2,418 |
| 9/12/2004 | Houston | MN | Land-O-Lakes, Caledonia | Velda Farms, Winter Haven, FL | 1 | 1504 | \$2.250 | \$3,384 | \$3,384 |
| 9/12/2004 | Houston | MN | Land-O-Lakes, Caledonia | Velda Farms, Winter Haven, FL | 1 | 1504 | \$2.250 | \$3,384 | \$3,384 |
| 9/13/2004 | Madison | NY | Quennsboro, Canastota | Publix Super Market Lakeland, FL | 1 | 1288 | \$2.250 | \$2,898 | \$2,898 |
| 9/13/2004 | Madison | NY | Quennsboro, Canastota | Publix Super Market Lakeland, FL | 1 | 1288 | \$2.250 | \$2,898 | \$2,898 |
| 9/13/2004 | Belmont | OH | United Dairy,Martin's Ferry | Publix Super Market Lakeland, FL | 1 | 1017 | \$2.250 | \$2,288 | \$2,288 |
| 9/13/2004 | Belmont | OH | United Dairy,Martin's Ferry | Publix Super Market Lakeland, FL | 1 | 1017 | \$2.250 | \$2,288 | \$2,288 |
| 9/13/2004 | Belmont | OH | United Dairy,Martin's Ferry | Publix Super Market Lakeland, FL | 1 | 1017 | \$2.250 | \$2,288 | \$2,288 |
| 9/14/2004 | Tillman | OK | LSMP | T.G. Lee Foods, Inc.-Orlando, FL | 1 | 1224 | \$2.270 | \$2,778 | \$2,778 |
| 9/15/2004 | Washington | OH | Broughton Fs-Marietta | McArthur Dairy, Miami FL | 1 | 1,084 | \$2.250 | \$2,439 | \$2,439 |
| 9/15/2004 | Washington | OH | Broughton Fs-Marietta | McArthur Dairy, Miami FL | 1 | 1,084 | \$2.250 | \$2,439 | \$2,439 |
| 9/15/2004 | Kanawah | WV | United Dairy-Charleston | Publix Super Market Lakeland, FL | 1 | 838 | \$2.250 | \$1,886 | \$1,886 |
| 9/16/2004 | Lancaster | PA | LANCO | Gustafson's LLC, Gr Cove Springs, FL | 1 | 857 | \$2.250 | \$1,928 | \$1,928 |
| 9/16/2004 | Dodge | WI | Alto - Waupun | Publix Super Market Lakeland, FL | 1 | 1337 | \$2.250 | \$3,008 | \$3,008 |
| 9/16/2004 | Dodge | WI | Alto - Waupun | Publix Super Market Lakeland, FL | 1 | 1337 | \$2.250 | \$3,008 | \$3,008 |
| 9/16/2004 | Dodge | WI | Alto - Waupun | Publix Super Market Lakeland, FL | 1 | 1337 | \$2.250 | \$3,008 | \$3,008 |
| 9/16/2004 | Belmont | OH | United Dairy,Martin's Ferry | Publix Super Market Lakeland, FL | 1 | 1017 | \$2.250 | \$2,288 | \$2,288 |
| 9/17/2004 | Dodge | WI | Alto - Waupun | Publix Super Market Lakeland, FL | 1 | 1337 | \$2.250 | \$3,008 | \$3,008 |
| 9/17/2004 | Madison | NY | Quennsboro, Canastota | Publix Super Market Lakeland, FL | 1 | 1288 | \$2.250 | \$2,898 | \$2,898 |
| 9/17/2004 | Madison | NY | Quennsboro, Canastota | Publix Super Market Lakeland, FL | 1 | 1288 | \$2.250 | \$2,898 | \$2,898 |
| 9/18/2004 | Belmont | OH | United Dairy,Martin's Ferry | Publix Super Market Lakeland, FL | 1 | 1017 | \$2.250 | \$2,288 | \$2,288 |
| 9/18/2004 | Belmont | OH | United Dairy,Martin's Ferry | Publix Super Market Lakeland, FL | 1 | 1017 | \$2.250 | \$2,288 | \$2,288 |
| 9/18/2004 | Belmont | OH | United Dairy,Martin's Ferry | Publix Super Market Lakeland, FL | 1 | 1017 | \$2.250 | \$2,288 | \$2,288 |
| 9/18/2004 | Howard | MD | MDVA, Laurel | Publix Super Market, Lakeland FL | 1 | 925 | \$2.250 | \$2,081 | \$2,081 |



"The Cooperative of Choice in the Southeast"

September 14, 2004

To: Milk Plants Served by Southeast Milk, Inc.

We at Southeast Milk, Inc. (SMI) understand the stressful times all of you are operating under since Hurricane Charley and Frances. We understand the pressure you are receiving from your customers for milk to fill up their shelves. We understand your frustration in SMI not being able to deliver all of the milk you need to meet your sales.

Since Hurricane Frances, SMI milk production is down about 100 loads per week. Most of this loss is in the Okeechobee-Avon park area, but the hurricane caused damage to dairy farms in Central and North Florida as well. Milk production is down due to cattle deaths into the hundreds, additional stress on the cows from not being milked (some cows went one or two days without being milked), not having ample supplies of feed, and the stress of the storm.

SMI has contracts with three other cooperatives (Land O'Lakes, Michigan Milk Producers, and Select Milk Producers) to supply a total of 38 loads per day or 266 loads of supplemental milk per week. During normal times this supplemental production, along with SMI's own production and Dairy Farmers of America and Maryland-Virginia production assigned to the Florida market, is enough to meet your needs. However, the hurricane disrupted the regular transportation of the supplemental milk to Florida.

Due to the factors described above, along with the increased demand resulting from plants closed during the hurricane and the loss of perishable products in both stores and homes, is why SMI has been unable to meet your normal milk needs, much less your requests for additional milk. This week alone we received requests for at least an additional 100 loads of milk above normal orders.

SMI has contacted a number of other cooperatives and proprietary plants seeking additional milk. Over the past few days we have received additional milk from New Mexico, Wisconsin, Ohio, and Pennsylvania. However, this extra milk only helped to replace some of SMI's own production losses, but provided no additional milk.

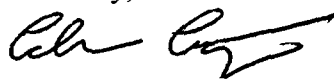
Looking ahead, we do see some improvement in milk supply toward the end of this week provided Hurricane Ivan misses the Florida peninsula. Transportation of supplemental milk is getting back on a regular schedule. SMI was able to locate and rent over the road trucks to haul some of the supplemental milk itself. These trucks have made one run and are on the way for their second run. And, hopefully, some of the pipeline is starting to re-fill.

In closing there are two points we at SMI want you to share:

1. Throughout this time of milk demand exceeding supply, we have done our best to treat all plants the same in regards to milk shipments. All have shared equally in reduced shipments.
2. We have done all we could to look for additional milk and the trucks to haul that additional milk. But it has been extremely difficult especially, during the lowest milk producing month of the year.

Again, we understand what you have encountered at the plant level, but rest assured we are doing all we can to meet your milk needs. We appreciate and thank you for your cooperation during these challenging times.

Sincerely,

A handwritten signature in black ink, appearing to read 'Calvin Covington', with a stylized flourish at the end.

Calvin Covington
Chief Executive Officer

CC:dk



Translations: Disclaimer

September 29th 2004

- Overview
- Florida Attorney General
- Frequently Asked Questions
- Programs and Units
- How to Contact Us
- Consumer Protection
- News Releases
- Citizen Safety Center
- Crime Prevention
- Crime Victims' Services
- Sunshine Law
- Attorney General Opinions
- Civil Rights
- Statewide Prosecutor
- Solicitor General
- Technology

Attorney General Charlie Crist News Release

September 24, 2004

Attorney General Crist Issues Hurricane Jeanne Consumer Alert

TALLAHASSEE - Attorney General Charlie Crist today advised Floridians awaiting Hurricane Jeanne's landfall on Florida's east coast to use caution when purchasing necessities prior to the storm and when hiring workers to help clean up from its aftermath. As Florida prepares for possibly the fourth major storm to make landfall in six weeks, Crist reminded citizens to beware of businesses or individuals overcharging for food, water, ice, gas, lodging and generators and for materials needed to prepare for the storm.

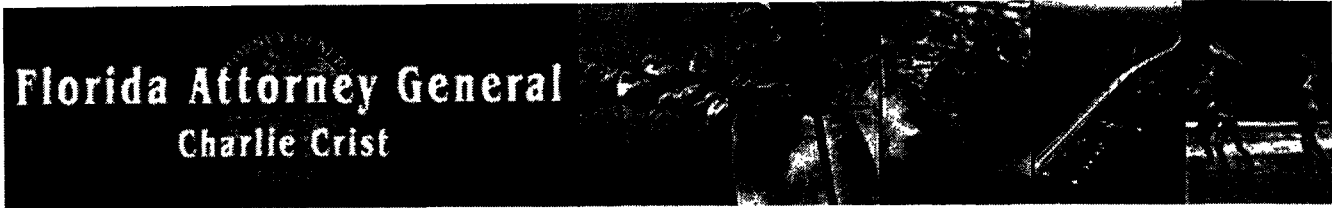
"Florida has suffered repeated, extreme weather conditions for the past several weeks," said Crist. "Unfortunately, citizens also need to be aware of the repeated acts of price gouging we have seen before, during and after the other three hurricanes. Overcharging citizens in dire need of goods is not only unacceptable, it is illegal, and we are utilizing all of our legal powers to combat this atrocious act."

It is illegal to overcharge consumers for necessities during a state of emergency, which Governor Bush declared in Florida on August 10 prior to Hurricane Charley's landfall. Crist also reminded citizens to hire only reputable businesses for home repair or cleanup work and to avoid paying with cash, especially before the work is completed. He recommended that citizens who suspect they are being overcharged for necessities or by contractors trying to cash in on Hurricane Jeanne should call the Attorney General's toll-free price gouging hotline at 1-800-646-0444. Consumers may also call the Department of Agriculture and Consumer Services' hotline at 1-800-435-7352.

Government Links



-
- [News Briefs](#)
- [Newsletter](#)
- [Monthly Consumer Bulletin](#)
-
-
-
-
- [Consumer Alerts](#)
- [Hurricane Information](#)
- [Envelope Stuffing Scam](#)
- [Timeshare Resales](#)
- [Phishing](#)
- [Medical Discount Programs](#)



Translations:  [Disclaimer](#)

September 29th 2004

- [Overview](#)
- [Florida Attorney General](#)
- [Frequently Asked Questions](#)
- [Programs and Units](#)
- [How to Contact Us](#)
- [Consumer Protection](#)
- [News Releases](#)
- [Citizen Safety Center](#)
- [Crime Prevention](#)
- [Crime Victims' Services](#)
- [Sunshine Law](#)
- [Attorney General Opinions](#)
- [Civil Rights](#)
- [Statewide Prosecutor](#)
- [Solicitor General](#)
- [Technology](#)
- [Employment and Internships](#)
- [Government Links](#)



Attorney General Charlie Crist News Release

September 23, 2004

Price Gouging Charges Filed Against Miami Distributor

\$169 gas can offered for sale

TALLAHASSEE - Attorney General Charlie Crist and First Judicial Circuit State Attorney Curtis Golden today announced the filing of a price gouging civil suit against a Miami-based gas and generator distributor operating in Santa Rosa County in the aftermath of Hurricane Ivan. Among the items offered for sale by Camp Out, Inc. was a gasoline can prominently priced at \$169.95.

Camp Out sent three employees into the Florida Panhandle to sell overpriced gas cans and generators from a roadside trailer in Milton. They sold gas cans manufactured by Blitz, Inc. for \$169.95 each, even though the suggested retail price is less than \$54, a markup of more than 200%. They also sold overpriced generators, including Dek models for \$1,995 – more than 300% above the manufacturer's actual retail price of \$450 – and Titan models for \$2,750, which is nearly double the manufacturer's actual retail price of \$1,595.

"These are among the most brazen attempts to abuse storm victims we have seen yet," said Crist. "It takes utter contempt for one's fellow citizens to not only gouge the price of generators, but also the costs of obtaining fuel to run those generators."

The suit alleges that Camp Out's sales violate Florida's price gouging and unfair and deceptive business trade statutes. Attorney General Crist and State Attorney Golden have asked the court to enjoin Camp Out, Inc., from selling generators or gas cans for prices that exceed the manufacturer's suggested retail price. The company is also being required to provide the Attorney General's Office on demand with documents to establish the suggested retail price or the cost of the goods being sold.

Camp Out is charged with violating the price gouging statute, which carries a maximum fine of \$1,000 for each occurrence and a violating the unfair and deceptive trade practices statute, which carries a penalty of \$10,000 – which grows to \$15,000 if any victims are over the age of 60.

In a separate matter, Crist announced the settlement of a price gouging and unfair trade practices investigation involving Monarch Drapery & Carpet Cleaning Company

[News Briefs
Newsletter](#)

[Monthly Consumer
Bulletin](#)



[Consumer Alerts](#)

[Hurricane
Information](#)

[Envelope Stuffing
Scam](#)

[Timeshare
Resales](#)

[Phishing](#)

[Medical Discount
Programs](#)

doing business as Coit Services of South Florida and Coit Drapery & Carpet Cleaners. The investigation revealed that Coit sent trucks into several South Florida neighborhoods in search of damaged homes.

Consumers who agreed to employ its services were charged an emergency fee of between \$60 and \$100, even though they had not solicited the company's business. The company warned consumers of "black mold" to heighten the sense of urgency surrounding the need for its services. Coit allegedly informed one customer that black mold "could kill her" if the wet carpet was not immediately removed.

The settlement calls for complete reimbursement of slightly more than \$3,000 to four consumers. The company is also required to pay \$10,000 in attorney costs and fees over a period of 90 days.

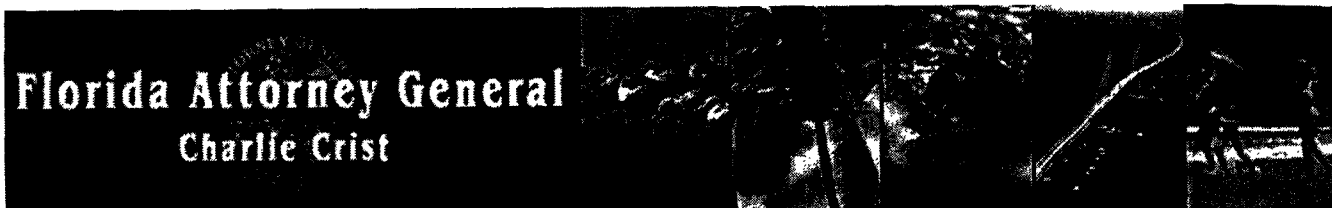
In addition, Coit must refrain from charging emergency call fees when it solicits consumers; must refrain from making statements about the potential health dangers of black mold other than that a wet carpet might mold, causing a possible health risk; and must refrain from conducting business in violation of price gouging or unfair and deceptive trade practices statutes.

"Sometimes it is possible to help consumers obtain refunds without a lengthy legal battle and this case is a good example," said Crist. "In addition, taxpayers dollars used to bring this action have been returned to the state and any future violations have been prevented."

For a copy of the Camp Out complaint, go to:
<http://www.myfloridalegal.com/CampOutComplaint.pdf>

For a copy of the Monarch settlement, go to:
<http://www.myfloridalegal.com/MonarchSettlement.pdf>

To view a photograph of a \$169 gas can, go to:
<http://www.myfloridalegal.com/images/Gascan.jpg>



Translations: Disclaimer

September 29th 2004

- Overview
- Florida Attorney General
- Frequently Asked Questions
- Programs and Units
- How to Contact Us
- Consumer Protection
- News Releases
- Citizen Safety Center
- Crime Prevention
- Crime Victims' Services
- Sunshine Law
- Attorney General Opinions
- Civil Rights
- Statewide Prosecutor
- Solicitor General
- Technology
- Employment and Internships
- Government Links

Attorney General Charlie Crist News Release

September 17, 2004

Volusia County Merchant Charged with Price Gouging

TALLAHASSEE - Attorney General Charlie Crist today announced the filing of a price gouging complaint against a Volusia County man selling overpriced generators. Gary D. Altman Sr., operator of E Z Ryder Scooters and E Z Ryder Motors, is accused of charging unconscionable prices and deceiving consumers about the true value of the generators he offered for sale.

As investigators looked into a complaint received by the Attorney General's Price Gouging Hotline, they became aware that E Z Ryder and Altman were under criminal investigation by the office of Volusia County Sheriff Ben F. Johnson. The two agencies then began to work cooperatively on the case.

"The price gouging statute does not forbid making a profit, but it does forbid profiteering," said Crist. "In this case, consumers were deceived at a time when they needed necessary items such as generators. I congratulate Sheriff Johnson and his team and we are pleased to have had the opportunity to work together on behalf of the people of Florida. We pledge the same cooperation to local authorities in the Florida Panhandle following Hurricane Ivan."

Sheriff's investigators observed Altman as he sold generators from the back of a pickup truck. When the investigators approached Altman, he handed them an advertisement for Contractor Line 3200W generators for \$863.85 as part of a "Hurricane Sale." The advertisement stated that the list price for the generator is \$1,492. On September 6, Altman sold one of the generators to a woman for \$925. When the woman confronted Altman about the price five days later, it was lowered to \$800. On September 7, Altman offered to sell a 3200W generator to another woman for \$863.

The average price of this generator in the Central Florida trade area during the 30-day period prior to the declaration of emergency was approximately \$400. The advertised list price of \$1,492 and the reference to a "Hurricane Sale" are both misleading since no such list price exists, and since the "sale" price is substantially higher than the region's average price.

Altman and E Z Ryder are charged with violating Florida's price gouging statute, which carries a maximum fine of \$1,000

- [News Briefs Newsletter](#)
 - [Monthly Consumer Bulletin](#)
 -
 -
 -
 -
 - [Consumer Alerts](#)
 - [Hurricane Information](#)
 - [Envelope Stuffing Scam](#)
 - [Timeshare Resales](#)
 - [Phishing](#)
 - [Medical Discount Programs](#)

per violation, and for violations of statutes covering deceptive trade practices and misleading advertising. Altman and his businesses could receive civil penalties of \$10,000 per violation of these statutes, in addition to attorney fees and costs, as well as actual damages caused to consumers.

Today's action is the ninth price gouging suit filed since Governor Bush declared a state of emergency on August 10. The range of cases includes hotels, tree-trimming service, home repair and now generators. In addition to the civil complaint filed by Crist, the sheriff's personnel arrested Altman for organized scheme to defraud on September 15, following repeated warnings to cease his activities.

**To view a copy of the complaint, go to:
<http://www.myfloridalegal.com/EZRydercomplaint.pdf>**

**Florida Attorney General
Charlie Crist**



Translations:  [Disclaimer](#)

September 29th 2004

- [Overview](#)
- [Florida Attorney General](#)
- [Frequently Asked Questions](#)
- [Programs and Units](#)
- [How to Contact Us](#)
- [Consumer Protection](#)
- [News Releases](#)
- [Citizen Safety Center](#)
- [Crime Prevention](#)
- [Crime Victims' Services](#)
- [Sunshine Law](#)
- [Attorney General Opinions](#)
- [Civil Rights](#)
- [Statewide Prosecutor](#)
- [Solicitor General](#)
- [Technology](#)
- [Employment and Internships](#)
- [Government Links](#)

**Attorney General Charlie Crist
News Release**

September 15, 2004

**Crist Files Price Gouging Complaint On
South Florida Renovator**

TALLAHASSEE- Attorney General Charlie Crist today announced that he has filed a price gouging complaint against a Hollywood carpet and interior restoration company for charging excessively high rates to clean up the water-damaged homes of Lee County residents that were devastated by Hurricane Charley.






ABC Restoration, Inc., doing business as "Dr. Dry," sent an employee on August 16 to assess water damage at the home of a Lee County couple. A woman who was house-sitting for the couple while they stayed at their out-of-state second home during the hurricane received a quote of \$6,500 to \$7,500 for Dr. Dry to repair the couple's porch ceiling and upstairs screens, and to remove the carpet from a room adjacent to the porch. The business removed the carpet, left it on the front lawn, moved furniture from an upstairs room to the porch and then demanded \$12,000 to complete the remaining work, according to the Attorney General's complaint.

Dr. Dry also provided a quote of \$5,000 to remove furniture and wet carpeting from the house-sitter's own home nearby. The woman gave Dr. Dry authorization to charge her credit card \$5,000 upon completion of the work. Workers placed 10 large fans and three dehumidifiers in the woman's home and made large holes in her ceilings to allow for drainage. Dr. Dry then demanded an additional \$6,500 to complete the work, an amount the woman's credit limit would not allow. At Dr. Dry's suggestion, the woman contacted her credit card company to have her credit limit raised in order to meet the payment. On August 19 the woman's credit card company notified her that Dr. Dry had charged her card although it had not completed the agreed-upon work. The business then refused her request for a refund.

On August 17, Dr. Dry removed approximately 24 square yards of wet carpet from the home of a North Ft. Myers man. The removal took approximately one hour to complete, for which the man was charged a fee of \$22 per square yard. The man paid Dr. Dry in full for this service, which ranges from \$3 to \$8 per square yard at standard industry price.

"Florida citizens trying rebuild their lives are relying on the fair dealing and honest assistance of home renovators," said



- 
- [News Briefs
Newsletter](#)
- [Monthly Consumer
Bulletin](#)
- 
- 
- 
- 
- [Consumer Alerts](#)
- [Hurricane
Information](#)
- [Envelope Stuffing
Scam](#)
- [Timeshare
Resales](#)
- [Phishing](#)
- [Medical Discount
Programs](#)

Crist. "It is infuriating when we hear about businesses trying to profit off of someone else's misery. We will vigorously pursue this complaint."

Florida was in a state of emergency, issued after Hurricane Charley, when the complaints against Dr. Dry were filed. This statewide condition makes it unlawful for a business to sell goods and services at "unconscionable" rates, or prices significantly higher than regular prices 30 days prior to the state of emergency. Dr. Dry is charged with violating price gouging and unfair and deceptive trade practices statutes. The business could receive civil penalties of \$10,000 per violation per statute, in addition to attorney fees and costs and actual damages caused to consumers.

**To view a copy of the complaint, go to:
<http://myfloridalegal.com/DrDryComplaint.pdf>**

Florida Attorney General Charlie Crist



Translations: Disclaimer

September 29th 2004

- Overview
- Florida Attorney General
- Frequently Asked Questions
- Programs and Units
- How to Contact Us
- Consumer Protection
- News Releases
- Citizen Safety Center
- Crime Prevention
- Crime Victims' Services
- Sunshine Law
- Attorney General Opinions
- Civil Rights
- Statewide Prosecutor
- Solicitor General
- Technology
- Employment and Internships
- Government Links

Attorney General Charlie Crist News Release

September 9, 2004

Fifth Florida Hotel Charged with Price Gouging

Seven cases have been filed after Hurricane Charley

TALLAHASSEE - Attorney General Charlie Crist today announced that he has filed a civil complaint against a hotel for price gouging and deceptive and unfair trade practices. The Attorney General's Office alleges that Baymont Inns & Suites in Naples charged "unconscionable," or substantially higher than regular, rates to consumers seeking a safe place during the brunt of the storm. This is the fifth price gouging complaint filed against a Florida hotel since the state of emergency was declared and the seventh case filed overall.

"During a state of emergency, affected citizens need a helping hand, not a hand in their pocket," said Crist. "We will continue to target price gougers from Hurricane Charley and act upon those now being received following Hurricane Frances."

The inn, located at 185 Bedzel Circle in Naples, reportedly charged three consumers more at check-out than the price quoted to them when they made their reservations. The first consumer, a Naples resident who evacuated her home on August 13, received a quote of \$53.99 per night. During check-out three days later, the hotel charged her 33 percent more, \$71.99 for the first two days, and \$89.10 for the third day, or 65 percent above the quote. Her protest led to a reduction for the third day charges to \$71.99, but the hotel refused to honor the \$53.99 quote for the first two days.

A second consumer evacuated his Naples home, which had been left without electricity on August 13. He sought shelter at Baymont Inns & Suites, and was charged \$93.60 after receiving a 10-percent AAA discount, and a quote for rates between \$49 and \$64 per night. The third Naples customer, also left without power, had reserved a room at Baymont for herself, a friend and a dog at a quoted rate of \$55 per night. After overhearing that there had been a price increase, she confronted the front desk about the matter and was informed that the charge was \$99 per night. The clerk agreed to reduce the price to \$79 per night, still 44 percent higher than the originally quoted price.

The civil complaints were filed under Florida's price gouging statute and the Florida Deceptive and Unfair Trade Practices Act, which are contained within Chapter 501 of the Florida Statutes. The price gouging statute delegates enforcement

-
- [News Briefs Newsletter](#)
- [Monthly Consumer Bulletin](#)
-
-
-

-
- [Consumer Alerts](#)
- [Hurricane Information](#)
- [Envelope Stuffing Scam](#)
- [Timeshare Resales](#)
- [Phishing](#)
- [Medical Discount Programs](#)

authority to the Attorney General and the Florida Department of Agriculture and Consumer Services, as well as the local state attorney. The two state agencies are working together to coordinate the complaints being reported by consumers.

Provisions of the price gouging statute took effect when Governor Jeb Bush declared a state of emergency on August 10, 2004. The Attorney General's Office continues to receive complaints at its price gouging hotline, 1-800-646-0444. The Department of Agriculture and Consumer Services number is 1-800-435-7352.

Florida's price gouging statute requires that the cost of necessities like food, water and shelter must remain at the price that was average during the 30 days immediately preceding a major storm like Hurricane Charley. Violations of the price gouging statute are subject to civil penalties of \$1,000 per violation up to a total of \$25,000 for multiple violations committed in a single 24-hour period. Florida's Deceptive and Unfair Trade Practices Act provides for civil penalties of \$10,000 per violation or \$15,000 for violations that victimize a senior citizen or handicapped person.

**To view a copy of the complaint, go to:
<http://www.myfloridalegal.com/baymontcomplaint.pdf>**

Document 3 – Invoices from haulers.

REMIT TO:
 INDIAN RIVER TRANSPORT CO.
 2580 EXECUTIVE ROAD
 WINTER HAVEN FL 33884

SUMMARY STATEMENTS

PAGE 1
 INV. DATE 9/30/04
 STATEMENT # 00012511

Federal ID No. 593172232

MAILING ADDRESS:
 SMIBE
 SOUTHEAST MILK
 P.O. BOX 3790
 BELLEVIEW, FL 34421

| P/U DATE | DESCRIPTION | PIECES | QTY | RATE | MTD | AMOUNT |
|----------|---|--------|-------|---------------|-----|------------|
| 9/14/04 | BOL#: 16514 | | | | | |
| SHPR: | SOUTHEAST MILK /Carlisle PA | | | | | |
| CONS: | PUBLIX SUPER MARKET /Deerfield Beach FL | | | | | |
| | MILK | 1 | 47620 | | FLT | |
| | FLAT RATE | | | | | 1,735.00 |
| | FUEL SURCHARGE | | | 1400 | | 242.90 |
| UNIT: | 5209 TRLR: S707 ORD#: 0283263 | | | INV#: 0282566 | | **1,977.90 |
| 9/18/04 | BOL#: 16677 | | | | | |
| SHPR: | SOUTHEAST MILK /Carlisle PA | | | | | |
| CONS: | PARMALAT DAIRIES /Atlanta GA | | | | | |
| | MILK | 1 | 49600 | | FLT | |
| | FLAT RATE | | | | | 1,276.00 |
| | FUEL SURCHARGE | | | 1400 | | 178.64 |
| UNIT: | 5207 TRLR: S655 ORD#: 0283509 | | | INV#: 0282567 | | **1,454.64 |
| 9/16/04 | BOL#: 16618 | | | | | |
| SHPR: | SOUTHEAST MILK /Carlisle PA | | | | | |
| CONS: | T.G. LEE DAIRY /Orlando FL | | | | | |
| | MILK | 1 | 49100 | | FLT | |
| | FLAT RATE | | | | | 1,528.00 |
| | FUEL SURCHARGE | | | 1400 | | 213.92 |
| UNIT: | 1173 TRLR: 2012 ORD#: 0283692 | | | INV#: 0282568 | | **1,741.92 |
| 9/16/04 | BOL#: 16601 | | | | | |
| SHPR: | SOUTHEAST MILK /Carlisle PA | | | | | |
| CONS: | PARMALAT DAIRIES /Atlanta GA | | | | | |
| | MILK | 1 | 48240 | | FLT | |
| | FLAT RATE | | | | | 1,276.00 |
| | FUEL SURCHARGE | | | 1400 | | 178.64 |
| UNIT: | 1186 TRLR: MILK24 ORD#: 0283695 | | | INV#: 0282569 | | **1,454.64 |
| 9/17/04 | BOL#: 16613 | | | | | |
| SHPR: | SOUTHEAST MILK /Carlisle PA | | | | | |
| CONS: | MCARTHUR DAIRY /Miami FL | | | | | |
| | MILK | 1 | 22661 | | FLT | |
| | FLAT RATE | | | | | 1,735.00 |

CONTINUED

Becker's Trucking, Inc.

Invoice

P.O. Box 66
126 Ostermann Dr.
Turtle Lake, WI 54889

Date 9/21/2004 Invoice # 1748

Bill To

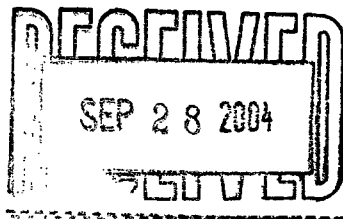
Southwest Milk Inc.
P.O. Box 3790
Belleview, FL 34421

P.O. No. 06002165 Terms Project

| Quantity | Description | Rate | Amount |
|----------|--|--------------|----------|
| 2 | Alto Dairy-Waupun, WI to Publix-Lakeland, FL | 3,000.00 /EA | 6,000.00 |

B/L 06002165 47,060 lbs.

B/L 06002166 47,060 lbs.



SEPT. IMPORT HAUL
G/L 2999

Total

\$6,000.00

Phone 270-678-8919

Fax 270-678-6664

TOP HAUL LOGISTICS, INC.
P.O. BOX 68
ALTOONA, IA 50009-0068

Southeast Milk
 PO Box 3790
 Bellview, FL 34421

Invoice # 000D141

Date: 09/29/04

| Date | Order # | Origin | Destination | B/L # | Amount |
|--------------|---------|-------------------|--------------|--------|-------------------|
| 09/10/04 | 506 | Martins Ferry, OH | Lakeland, FL | 3934 | \$2,115.36 |
| | | | | UNITED | |
| | | | | | |
| | | | | | |
| | | | | | |
| | | | | | |
| | | | | | |
| | | | | | |
| | | | | | |
| | | | | | |
| | | | | | |
| | | | | | |
| | | | | | |
| | | | | | |
| | | | | | |
| Total | | | | | \$2,115.36 |

RECEIVED
 OCT 04 2004

TERMS NET DUE UPON RECEIPT

Thank You For Your Business

SEPT IMP
 HAULING G/L 2999