



United States Department of Agriculture

Agricultural Marketing Service - Dairy Programs

**Florida Marketing Area
Federal Order No. 6**

2004 ANNUAL STATISTICS

Sue L. Mosley
Market Administrator
P.O. Box 491778
Lawrenceville, Georgia 30049

EXHIBIT

//

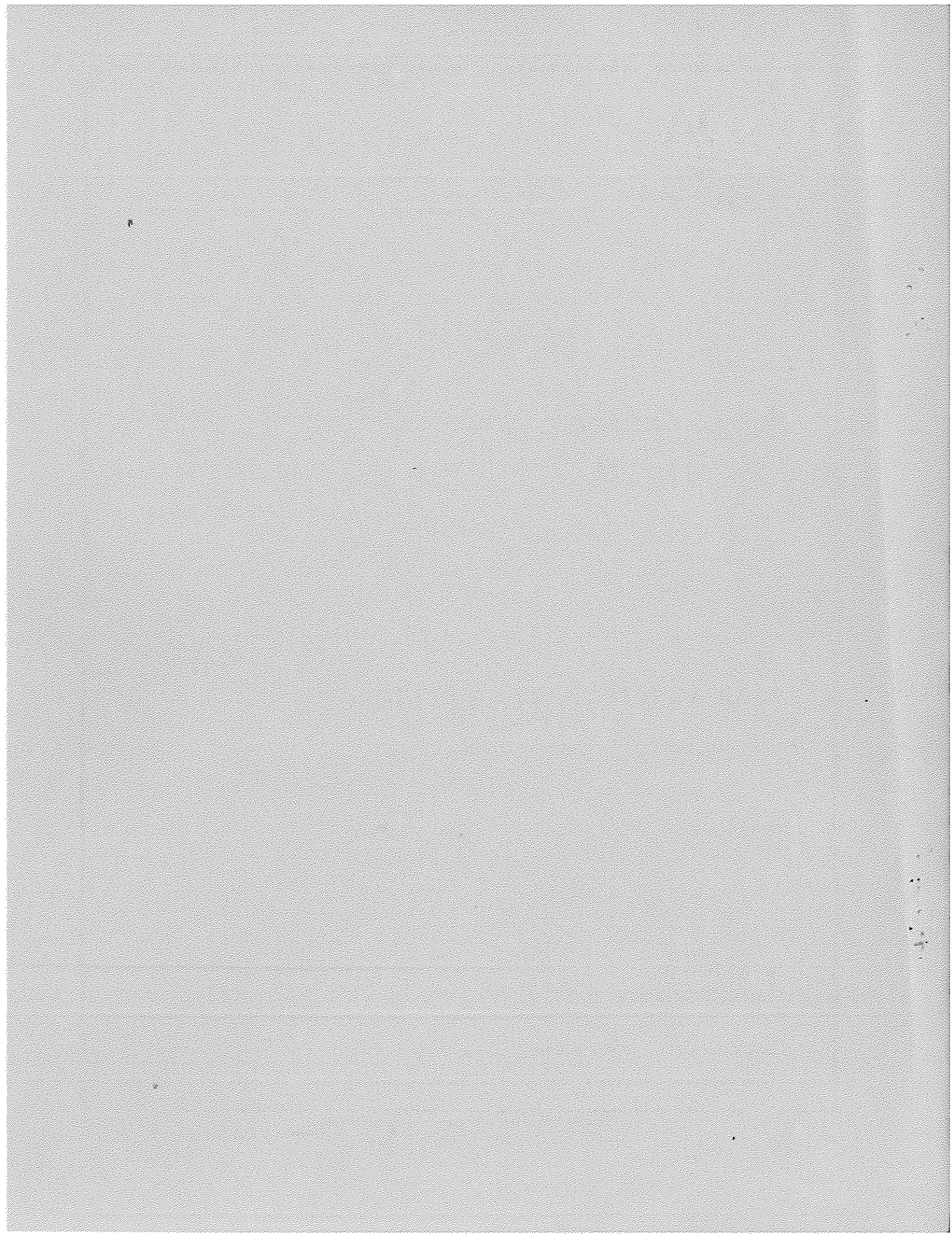


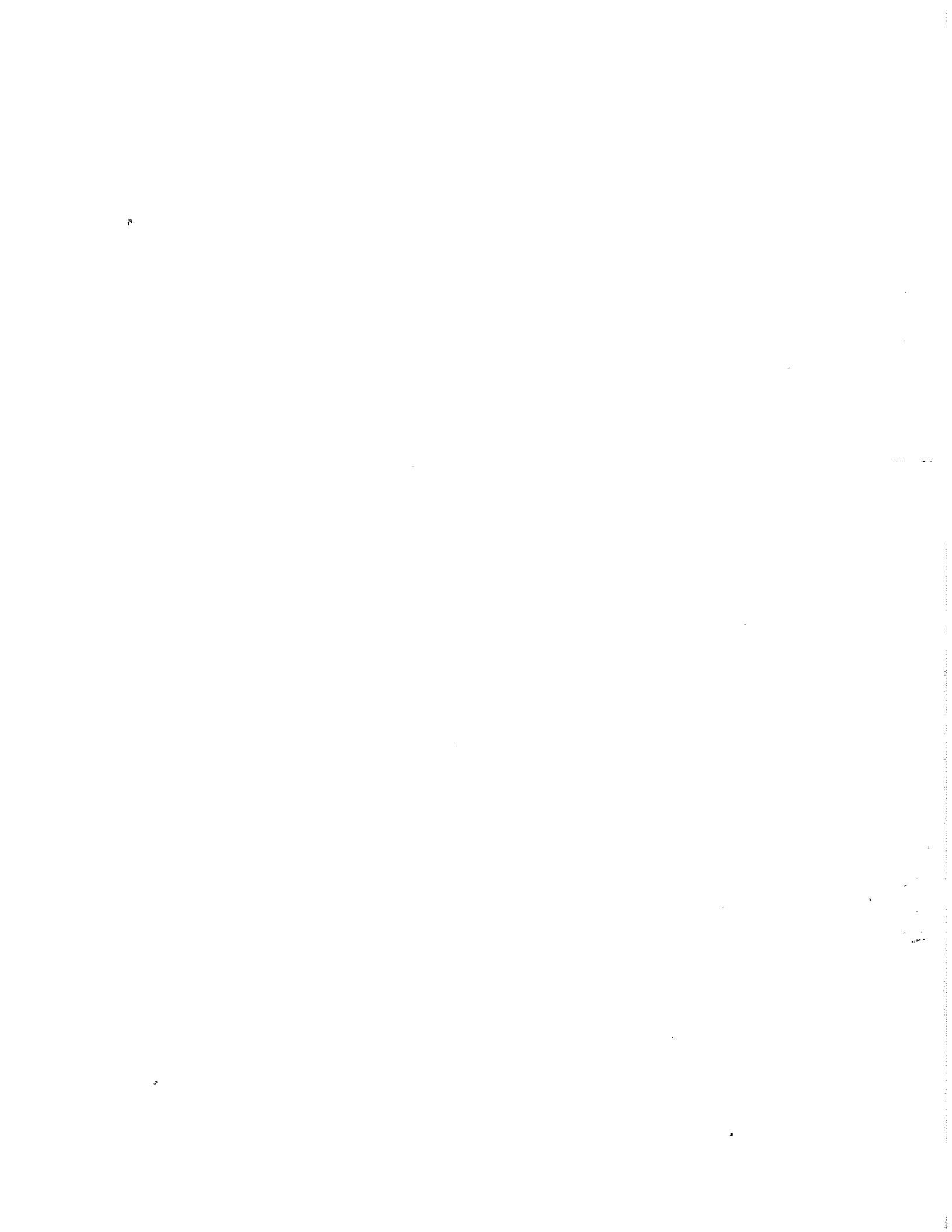
TABLE OF CONTENTS

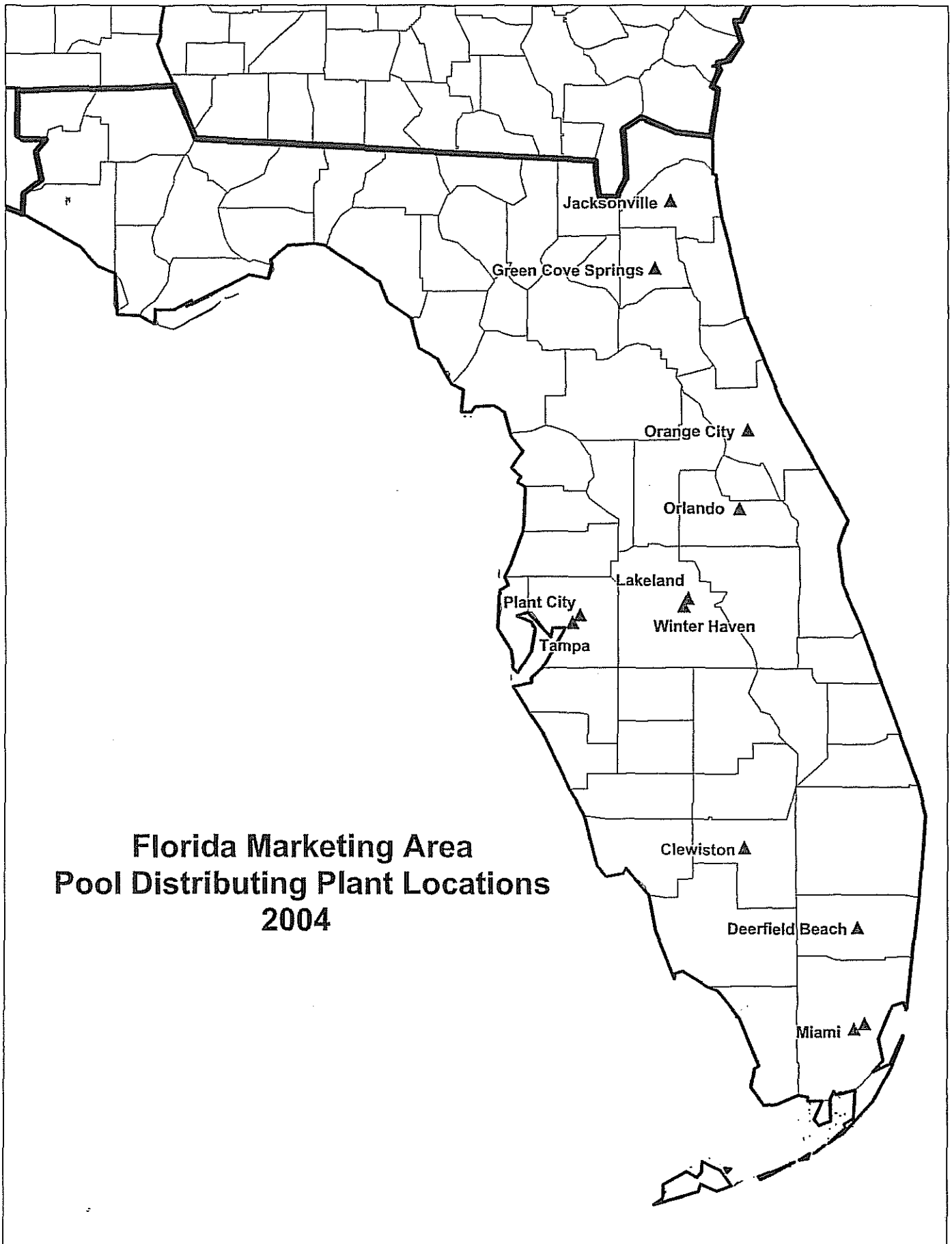
Florida Marketing Area Map	1
Receipts and Classification of Producer Milk	2
Receipts and Classification of Other Source Milk, Overages, and Opening Inventories	3
Classification of Total Receipts	4
Class I Utilization by Pool Handlers	5
Route Disposition by Pool and Non-Pool Plants	6
Total Class I Route Disposition by Pool Plants	7
Total Class I Route Disposition Inside the Marketing Area	8
Class II Utilization by Pool Handlers	9
Class III Utilization by Pool Handlers	10
Class IV Utilization by Pool Handlers	11
Announced Federal Order Class and Uniform Prices	12
NASS Dairy Product Price Averages Used In Federal Milk Order Price Formulas	13
2004 Pool Handlers	14
2004 Nonpool Handlers with Route Disposition in the Marketing Area	16

The data presented herein represents a compilation of general information pertaining to the marketing of milk in the Florida Marketing Area during 2004. Except for the corrections of mathematical and other obvious errors, the data presented were taken from reports of receipts and utilization, payroll reports, and reports of nonpool handlers that were submitted to the office of the Market Administrator as well as publications released by this office.

This information is prepared pursuant to Section 1000.25 (c)(8) of the General Provisions of Federal Milk Marketing Orders, Part 1000 which is incorporated by reference and made a part of Federal Order Number 6. Part 1000 states that the Market Administrator shall "Prepare and disseminate publicly for the benefit of producers, handlers, and consumers such statistics and other information concerning operation of the order and facts relevant to the provisions thereof (or proposed provisions) as do not reveal confidential information."

The Department of Agriculture (USDA) prohibits discrimination in its programs on the basis of race, color, national origin, gender, religion, age, disability, political beliefs, sexual orientation, and marital or familial status. (Not all prohibited bases apply to all programs.) Persons with disabilities who require alternative means for communication of program information (Braille, large print, audiotape, etc.) should contact USDA's TARGET Center at (202) 720-2600 (voice and TDD). To file a complaint, write USDA, Director, Office of Civil Rights; Room 326W, Jamie L. Whitten Building, 1400 Independence Avenue SW, Washington, D.C. 20250-9410, or call (202) 720-5964 (voice and TDD). USDA is an equal opportunity provider and employer.





**Florida Marketing Area
Pool Distributing Plant Locations
2004**

**FLORIDA MARKETING AREA
FEDERAL ORDER NO. 6**

RECEIPTS AND CLASSIFICATION OF PRODUCER MILK AND BUTTERFAT

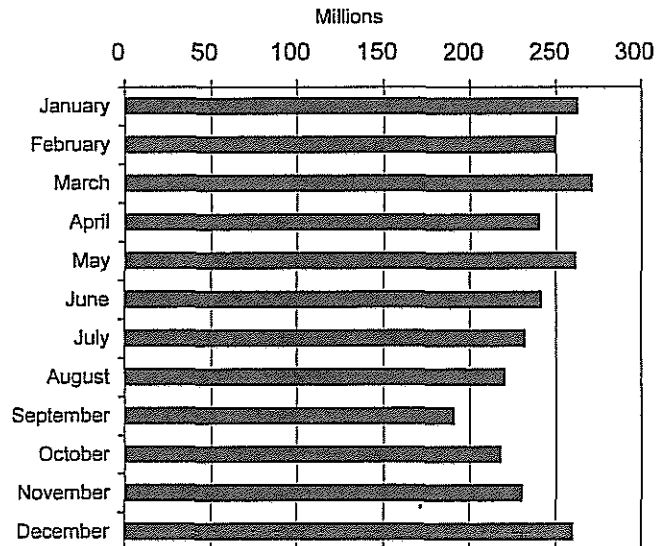
2004	CLASS I			CLASS II		
	PRODUCT POUNDS	%	BUTTERFAT POUNDS	PRODUCT POUNDS	%	BUTTERFAT POUNDS
January	227,171,966	86.61	4,898,682	19,117,756	7.29	2,817,948
February ⁿ	204,096,801	81.90	4,343,848	21,027,217	8.44	3,065,424
March	224,620,571	83.01	4,789,448	23,154,229	8.56	3,472,694
April	217,022,599	90.57	4,708,990	18,511,826	7.73	3,170,546
May	197,480,325	75.70	4,317,891	21,402,989	8.21	3,096,809
June	189,057,855	78.42	4,177,543	23,151,079	9.60	3,139,184
July	203,394,225	87.81	4,517,554	19,359,237	8.36	3,154,163
August	189,776,381	86.32	4,160,416	21,408,689	9.74	3,197,210
September	169,418,807	88.86	3,795,442	14,507,873	7.61	2,440,145
October	190,250,721	87.52	4,114,102	20,768,312	9.55	3,123,870
November	204,992,885	89.05	4,578,456	20,340,309	8.84	3,276,784
December	222,276,873	85.58	5,062,058	23,421,148	9.02	3,084,787
Total	2,439,560,009	84.91%	53,464,430	246,170,664	8.57%	37,039,564

2004	CLASS III			CLASS IV		
	PRODUCT POUNDS	%	BUTTERFAT POUNDS	PRODUCT POUNDS	%	BUTTERFAT POUNDS
January	9,304,947	3.55	513,798	6,693,636	2.55	1,389,435
February	14,951,232	6.00	666,064	9,110,264	3.66	1,017,804
March	16,087,105	5.95	738,984	6,705,260	2.48	681,851
April	291,457	0.12	125,239	3,777,132	1.58	546,925
May	26,294,497	10.08	1,021,123	15,674,788	6.01	829,283
June	21,511,204	8.92	823,904	7,371,678	3.06	385,920
July	5,455,323	2.36	270,683	3,409,842	1.47	320,803
August	560,613	0.25	200,577	8,108,263	3.69	399,955
September	1,853,873	0.97	315,504	4,880,404	2.56	525,526
October	658,941	0.30	322,841	5,725,009	2.63	439,218
November	659,134	0.29	265,976	4,184,696	1.82	248,567
December	2,252,829	0.87	203,816	11,761,559	4.53	1,090,547
Total	99,881,155	3.48%	5,468,509	87,402,531	3.04%	7,875,834

TOTAL PRODUCER RECEIPTS

2004	PRODUCT POUNDS	%	BUTTERFAT POUNDS
January	262,288,305	100.00	9,619,863
February	249,185,514	100.00	9,093,140
March	270,567,165	100.00	9,682,977
April	239,603,014	100.00	8,551,700
May	260,852,599	100.00	9,265,106
June	241,091,816	100.00	8,526,551
July	231,618,627	100.00	8,263,203
August	219,853,946	100.00	7,958,158
September	190,660,957	100.00	7,076,617
October	217,402,983	100.00	8,000,031
November	230,177,024	100.00	8,369,783
December	259,712,409	100.00	9,441,208
Total	2,873,014,359	100.00%	103,848,337

Monthly Producer Receipts



**FLORIDA MARKETING AREA
FEDERAL ORDER NO. 6**

**RECEIPTS AND CLASSIFICATION OF OTHER SOURCE MILK,
OVERAGES, AND OPENING INVENTORIES**

2004	<u>OTHER SOURCE MILK</u>	<u>OVERAGES</u>	<u>OPENING INVENTORIES</u>	<u>TOTAL</u>
January	14,232,972	79,518	18,323,215	32,635,705
February	14,738,449	18,178	17,131,187	31,887,814
March	14,820,155	47,159	21,462,101	36,329,415
April	15,264,546	24,833	20,715,210	36,004,589
May	14,350,201	195,205	19,743,754	34,289,160
June	14,362,555	23,926	18,603,358	32,989,839
July	14,905,962	0	18,705,609	33,611,571
August	39,910,919	3,305	17,034,279	56,948,503
September	49,859,296	140,730	19,573,714	69,573,740
October	48,418,572	27,635	19,182,183	67,628,390
November	33,797,634	20,810	22,075,032	55,893,476
December	20,165,366	71,867	20,275,471	40,512,704
Total	294,826,627	653,166	232,825,113	528,304,906

2004	<u>CLASS I</u>	<u>CLASS II</u>	<u>CLASS III</u>	<u>CLASS IV</u>
January	15,287,691	9,475,778	198,039	7,674,197
February	17,495,106	10,032,634	20,194	4,339,880
March	16,000,358	9,537,622	442	10,790,993
April	15,976,662	10,513,138	6,840	9,507,949
May	18,275,986	9,695,975	11,962	6,305,237
June	13,972,885	10,064,190	55,385	8,897,379
July	15,908,849	9,206,784	10,702	8,485,236
August	38,711,720	8,968,195	54,791	9,213,797
September	45,041,243	11,293,340	142,008	13,097,149
October	44,125,029	10,504,049	323,189	12,676,123
November	31,433,624	11,207,745	32,272	13,219,835
December	19,609,118	9,117,428	0	11,786,158
Total	291,838,271	119,616,878	855,824	115,993,933

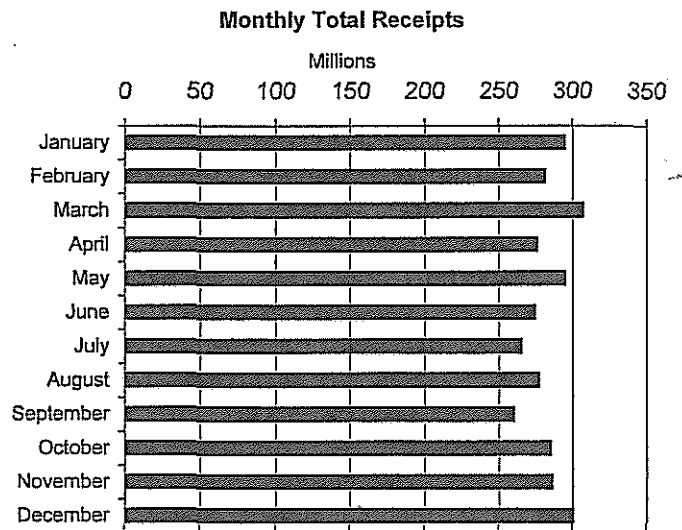
**FLORIDA MARKETING AREA
FEDERAL ORDER NO. 6**

CLASSIFICATION OF TOTAL RECEIPTS

2004	CLASS I			CLASS II		
	PRODUCT POUNDS	BUTTERFAT POUNDS	BUTTERFAT TEST	PRODUCT POUNDS	BUTTERFAT POUNDS	BUTTERFAT TEST
January	242,459,657	5,212,481	2.15%	28,593,534	2,836,534	9.92%
February	221,591,907	4,704,899	2.12%	31,059,851	3,195,464	10.29%
March	240,620,929	5,118,353	2.13%	32,691,851	3,493,191	10.69%
April	232,999,261	5,029,622	2.16%	29,024,964	3,315,372	11.42%
May	215,756,311	4,683,859	2.17%	31,098,964	3,241,080	10.42%
June	203,030,740	4,474,546	2.20%	33,215,269	3,252,733	9.79%
July	219,303,074	4,842,764	2.21%	28,566,021	3,199,573	11.20%
August	228,488,101	4,953,911	2.17%	30,376,884	3,293,080	10.84%
September	214,460,050	4,725,916	2.20%	25,801,213	2,706,262	10.49%
October	234,375,750	5,023,113	2.14%	31,272,361	3,415,342	10.92%
November	236,426,509	5,281,270	2.23%	31,548,054	3,493,004	11.07%
December	241,885,991	5,519,406	2.28%	32,538,576	3,229,680	9.93%
Total	2,731,398,280	59,570,140	2.18%	365,787,542	38,671,315	10.57%

2004	CLASS III			CLASS IV		
	PRODUCT POUNDS	BUTTERFAT POUNDS	BUTTERFAT TEST	PRODUCT POUNDS	BUTTERFAT POUNDS	BUTTERFAT TEST
January	9,502,986	513,798	5.41%	14,367,833	1,808,492	12.59%
February	14,971,426	675,968	4.52%	13,450,144	1,298,813	9.66%
March	16,087,547	739,426	4.60%	17,496,253	1,186,124	6.78%
April	298,297	126,946	42.56%	13,285,081	892,642	6.72%
May	26,306,459	1,026,134	3.90%	21,980,025	1,141,945	5.20%
June	21,566,589	823,904	3.82%	16,269,057	834,582	5.13%
July	5,466,025	271,770	4.97%	11,895,078	729,494	6.13%
August	615,404	255,368	41.50%	17,322,060	1,079,255	6.23%
September	1,995,881	379,354	19.01%	17,977,553	1,379,197	7.67%
October	982,130	419,802	42.74%	18,401,132	1,325,760	7.20%
November	691,406	287,626	41.60%	17,404,531	976,537	5.61%
December	2,252,829	203,816	9.05%	23,547,717	1,652,138	7.02%
Total	100,736,979	5,723,912	5.68%	203,396,464	14,304,979	7.03%

2004	TOTAL RECEIPTS		
	PRODUCT POUNDS	BUTTERFAT POUNDS	BUTTERFAT TEST
January	294,924,010	10,371,305	3.52%
February	281,073,328	9,875,144	3.51%
March	306,896,580	10,537,094	3.43%
April	275,607,603	9,364,582	3.40%
May	295,141,759	10,093,018	3.42%
June	274,081,655	9,385,765	3.42%
July	265,230,198	9,043,601	3.41%
August	276,802,449	9,581,614	3.46%
September	260,234,697	9,190,729	3.53%
October	285,031,373	10,184,017	3.57%
November	286,070,500	10,038,437	3.51%
December	300,225,113	10,605,040	3.53%
Total	3,401,319,265	118,270,346	3.48%



**FLORIDA MARKETING AREA
FEDERAL ORDER NO. 6**

TOTAL CLASS I UTILIZATION BY POOL HANDLERS

2004	TOTAL CLASS I ROUTE DISPOSITION	TRANSFERRED OR DIVERTED TO NONPOOL PLANTS	ENDING INVENTORY	CLASS I SHRINKAGE
January	225,930,449	923,656	14,477,274	1,128,278
February	208,673,496	189,512	12,107,616	621,283
March	227,425,064	820,909	11,606,518	768,438
April	215,596,173	1,305,818	14,759,934	1,337,336
May	202,627,670	2,181,449	10,595,871	351,321
June	187,850,905	3,081,855	11,266,579	831,401
July	203,717,854	2,039,074	13,226,412	319,734
August	213,684,518	2,448,949	11,606,046	748,588
September	201,126,128	1,206,135	11,744,324	383,463
October	217,045,129	1,365,639	13,558,498	2,406,484
November	220,074,522	1,091,711	13,248,971	2,011,305
December	226,995,556	1,017,210	12,587,125	1,286,100
Total	2,550,747,464	17,671,917	150,785,168	12,193,731

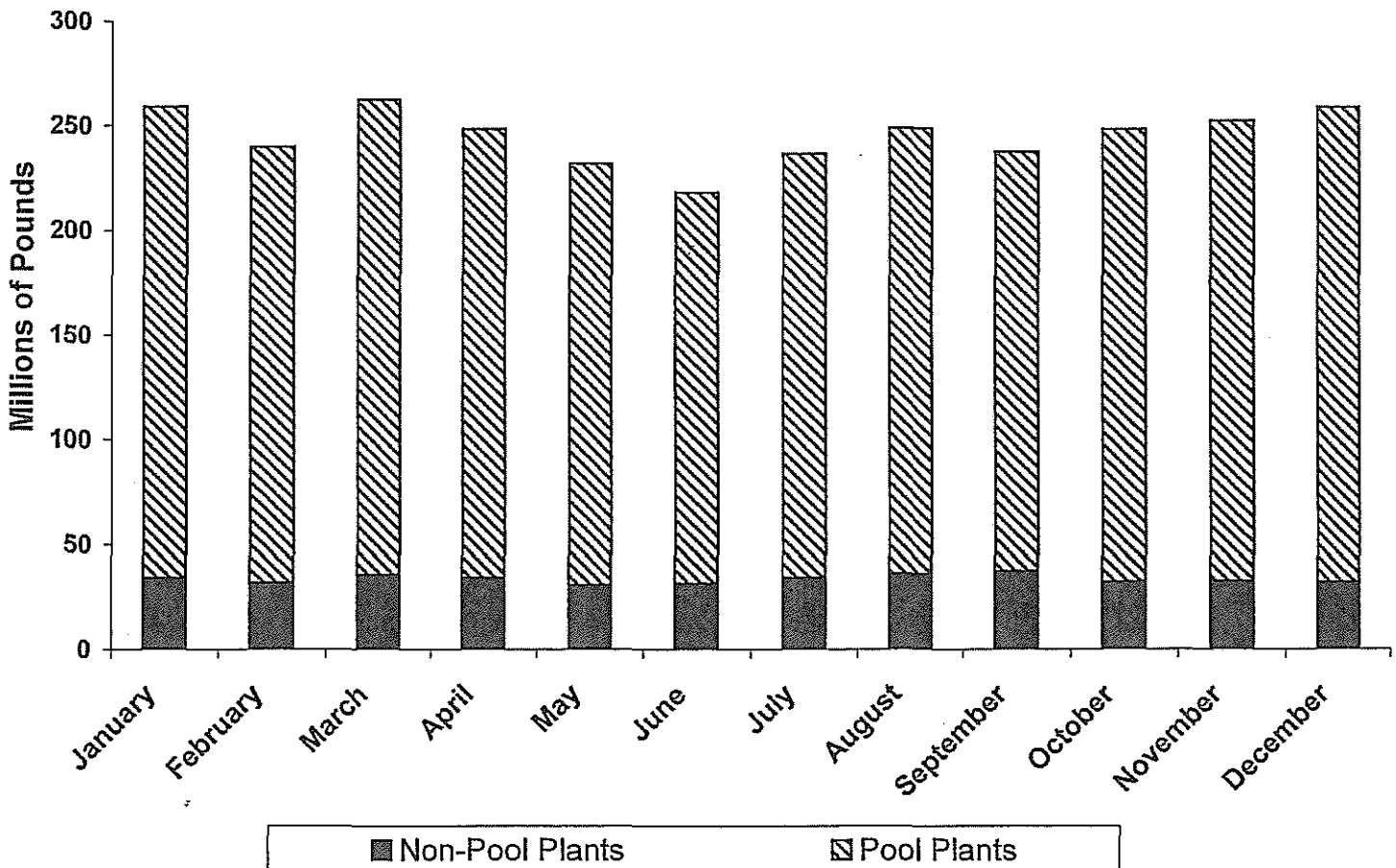
TOTAL CLASS I UTILIZATION

2004	PRODUCT POUNDS	BUTTERFAT POUNDS	BUTTERFAT TEST	DAILY AVERAGE UTILIZATION
January	242,459,657	5,212,481	2.15%	7,821,279
February	221,591,907	4,704,899	2.12%	7,641,100
March	240,620,929	5,118,353	2.13%	7,761,965
April	232,999,261	5,029,622	2.16%	7,766,642
May	215,756,311	4,683,859	2.17%	6,959,881
June	203,030,740	4,474,546	2.20%	6,767,691
July	219,303,074	4,842,764	2.21%	7,074,293
August	228,488,101	4,953,911	2.17%	7,370,584
September	214,460,050	4,725,916	2.20%	7,148,668
October	234,375,750	5,023,113	2.14%	7,560,508
November	236,426,509	5,281,270	2.23%	7,880,884
December	241,885,991	5,519,406	2.28%	7,802,774
Total	2,731,398,280	59,570,140	2.18%	7,462,837

**FLORIDA MARKETING AREA
FEDERAL ORDER 6
ROUTE DISPOSITION IN THE MARKET BY POOL AND NON-POOL PLANTS**

<u>2004_r</u>	<u>IN-AREA SALES NONPOOL PLANTS</u>	<u>% NONPOOL PLANTS</u>	<u>IN-AREA SALES F.O. 6 POOL PLANTS</u>	<u>% POOL PLANTS</u>	<u>TOTAL F.O. 6 IN-AREA SALES</u>
January	33,737,249	13.02%	225,388,034	86.98%	259,125,283
February	31,390,213	13.09%	208,377,333	86.91%	239,767,546
March	35,320,884	13.47%	226,816,900	86.53%	262,137,784
April	33,796,046	13.62%	214,287,162	86.38%	248,083,208
May	30,194,284	13.04%	201,313,155	86.96%	231,507,439
June	31,029,814	14.24%	186,807,275	85.76%	217,837,089
July	33,850,027	14.32%	202,461,810	85.68%	236,311,837
August	35,713,463	14.38%	212,586,561	85.62%	248,300,024
September	36,880,355	15.56%	200,189,060	84.44%	237,069,415
October	31,646,424	12.78%	215,972,184	87.22%	247,618,608
November	32,080,090	12.74%	219,762,142	87.26%	251,842,232
December	31,579,986	12.23%	226,614,109	87.77%	258,194,095
Total	397,218,835	13.52%	2,540,575,725	86.48%	2,937,794,560

2004 Class I Disposition by Pool & Non-Pool Plants



**FLORIDA MARKETING AREA
FEDERAL ORDER NO. 6**

TOTAL DISPOSITION ON ROUTES INSIDE THE MARKETING AREA BY POOL PLANTS

2004	WHOLE MILK	FAT FREE MILK	LOW FAT MILK	REDUCED FAT MILK	CULTURED MILK	FLAVORED MILK&DRINKS	TOTAL IN AREA
January	94,297,600	32,000,682	23,797,702	57,776,573	1,127,804	16,387,673	225,388,034
February	85,396,201	30,104,677	22,502,405	53,305,493	1,048,516	16,020,041	208,377,333
March	94,271,558	32,406,260	21,208,011	58,677,503	1,258,934	18,994,634	226,816,900
April	90,447,988	29,663,627	22,332,449	55,638,799	1,119,893	15,084,406	214,287,162
May	86,412,974	27,525,126	20,521,494	52,201,204	1,012,550	13,639,807	201,313,155
June	82,907,118	25,662,424	18,961,466	50,648,769	957,057	7,670,441	186,807,275
July	89,387,163	27,769,286	20,914,268	55,707,288	1,079,947	7,603,858	202,461,810
August	90,390,375	28,081,853	21,366,190	56,571,859	1,685,755	14,490,529	212,586,561
September	86,774,061	26,344,467	20,040,578	52,922,503	1,367,530	12,739,921	200,189,060
October	89,059,688	28,782,612	22,670,393	56,087,686	1,065,092	18,306,713	215,972,184
November	89,988,040	28,958,214	22,850,262	56,396,855	1,396,555	20,172,216	219,762,142
December	94,978,210	29,338,318	23,059,143	58,775,055	1,292,274	19,171,109	226,614,109
Total	1,074,310,976	346,637,546	260,224,361	664,709,587	14,411,907	180,281,348	2,540,575,725

TOTAL DISPOSITION ON ROUTES OUTSIDE THE MARKETING AREA BY POOL PLANTS

2004	WHOLE MILK	FAT FREE MILK	LOW FAT MILK	REDUCED FAT MILK	CULTURED MILK	FLAVORED MILK&DRINKS	TOTAL OUT OF AREA
January	204,409	83,955	61,550	155,934	0	36,567	542,415
February	61,658	79,063	42,650	81,586	0	31,206	296,163
March	212,711	107,670	71,201	180,919	0	35,663	608,164
April	359,274	217,590	148,538	325,954	679	256,976	1,309,011
May	388,729	234,220	159,817	339,251	820	191,678	1,314,515
June	241,737	208,518	136,980	271,903	749	183,743	1,043,630
July	283,695	247,337	166,002	325,793	1,035	232,182	1,256,044
August	253,311	219,935	137,967	270,278	1,034	215,432	1,097,957
September	222,467	175,051	117,325	222,647	464	199,114	937,068
October	252,730	210,871	132,102	268,269	786	208,187	1,072,945
November	65,852	66,779	34,230	81,834	932	62,753	312,380
December	86,092	84,123	45,542	104,408	1,398	59,884	381,447
Total	2,632,665	1,935,112	1,253,904	2,628,776	7,897	1,713,385	10,171,739

TOTAL DISPOSITION ON ROUTES IN AND OUT OF THE MARKETING AREA BY POOL PLANTS

2004	WHOLE MILK	FAT FREE MILK	LOW FAT MILK	REDUCED FAT MILK	CULTURED MILK	FLAVORED MILK&DRINKS	TOTAL SALES
January	94,502,009	32,084,637	23,859,252	57,932,507	1,127,804	16,424,240	225,930,449
February	85,457,859	30,183,740	22,545,055	53,387,079	1,048,516	16,051,247	208,673,496
March	94,484,269	32,513,930	21,279,212	58,858,422	1,258,934	19,030,297	227,425,064
April	90,807,262	29,881,217	22,480,987	55,964,753	1,120,572	15,341,382	215,596,173
May	86,801,703	27,759,346	20,681,311	52,540,455	1,013,370	13,831,485	202,627,670
June	83,148,855	25,870,942	19,098,446	50,920,672	957,806	7,854,184	187,850,905
July	89,670,858	28,016,623	21,080,270	56,033,081	1,080,982	7,836,040	203,717,854
August	90,643,686	28,301,788	21,504,157	56,842,137	1,686,789	14,705,961	213,684,518
September	86,996,528	26,519,518	20,157,903	53,145,150	1,367,994	12,939,035	201,126,128
October	89,312,418	28,993,483	22,802,495	56,355,955	1,065,878	18,514,900	217,045,129
November	90,053,892	29,024,993	22,884,492	56,478,689	1,397,487	20,234,969	220,074,522
December	95,064,302	29,422,441	23,104,685	58,879,463	1,293,672	19,230,993	226,995,556
Total	1,076,943,641	348,572,658	261,478,265	667,338,363	14,419,804	181,994,733	2,550,747,464

**FLORIDA MARKETING AREA
FEDERAL ORDER NO. 6**

DISPOSITION ON ROUTES INSIDE THE MARKETING AREA BY NONPOOL PLANTS

2004	WHOLE MILK	FAT FREE MILK	LOW FAT MILK	REDUCED FAT MILK	CULTURED MILK	FLAVORED MILK&DRINKS	TOTAL NONPOOL
January	12,808,840	4,767,334	2,882,862	9,419,038	172,830	3,686,345	33,737,249
February	11,889,286	4,513,590	2,761,965	8,589,399	175,142	3,460,831	31,390,213
March	13,176,335	4,949,396	2,881,902	9,988,694	163,890	4,160,667	35,320,884
April	12,715,759	4,545,488	2,590,700	9,589,256	160,048	4,194,795	33,796,046
May	11,627,787	4,186,674	2,310,163	8,858,718	146,820	3,064,122	30,194,284
June	12,031,462	4,274,600	2,425,179	9,126,464	142,804	3,029,305	31,029,814
July	12,808,422	4,752,979	2,675,227	9,959,789	185,522	3,468,088	33,850,027
August	12,901,877	5,188,192	2,779,354	10,956,327	143,203	3,744,510	35,713,463
September	13,566,655	5,352,823	3,028,533	11,302,529	135,256	3,494,559	36,880,355
October	11,516,893	4,669,825	2,632,785	9,236,862	140,279	3,449,780	31,646,424
November	11,634,293	4,887,929	2,706,928	8,938,600	165,664	3,746,676	32,080,090
December	11,615,924	4,323,593	2,443,107	9,442,654	178,246	3,576,462	31,579,986
Total	148,293,533	56,412,423	32,118,705	115,408,330	1,909,704	43,076,140	397,218,835

DISPOSITION ON ROUTES INSIDE THE MARKETING AREA BY POOL PLANTS

2004	WHOLE MILK	FAT FREE MILK	LOW FAT MILK	REDUCED FAT MILK	CULTURED MILK	FLAVORED MILK&DRINKS	TOTAL POOL
January	94,297,600	32,000,682	23,797,702	57,776,573	1,127,804	16,387,673	225,388,034
February	85,396,201	30,104,677	22,502,405	53,305,493	1,048,516	16,020,041	208,377,333
March	94,271,558	32,406,260	21,208,011	58,677,503	1,258,934	18,994,634	226,816,900
April	90,447,988	29,663,627	22,332,449	55,638,799	1,119,893	15,084,406	214,287,162
May	86,412,974	27,525,126	20,521,494	52,201,204	1,012,550	13,639,807	201,313,155
June	82,907,118	25,662,424	18,961,466	50,648,769	957,057	7,670,441	186,807,275
July	89,387,163	27,769,286	20,914,268	55,707,288	1,079,947	7,603,858	202,461,810
August	90,390,375	28,081,853	21,366,190	56,571,859	1,685,755	14,490,529	212,586,561
September	86,774,061	26,344,467	20,040,578	52,922,503	1,367,530	12,739,921	200,189,060
October	89,059,688	28,782,612	22,670,393	56,087,686	1,065,092	18,306,713	215,972,184
November	89,988,040	28,958,214	22,850,262	56,396,855	1,396,555	20,172,216	219,762,142
December	94,978,210	29,338,318	23,059,143	58,775,055	1,292,274	19,171,109	226,614,109
Total	1,074,310,976	346,637,546	260,224,361	664,709,587	14,411,907	180,281,348	2,540,575,725

TOTAL DISPOSITION ON ROUTES INSIDE THE MARKETING AREA

2004	WHOLE MILK	FAT FREE MILK	LOW FAT MILK	REDUCED FAT MILK	CULTURED MILK	FLAVORED MILK&DRINKS	TOTAL SALES
January	107,106,440	36,768,016	26,680,564	67,195,611	1,300,634	20,074,018	259,125,283
February	97,285,487	34,618,267	25,264,370	61,894,892	1,223,658	19,480,872	239,767,546
March	107,447,893	37,355,656	24,089,913	68,666,197	1,422,824	23,155,301	262,137,784
April	103,163,747	34,209,115	24,923,149	65,228,055	1,279,941	19,279,201	248,083,208
May	98,040,761	31,711,800	22,831,657	61,059,922	1,159,370	16,703,929	231,507,439
June	94,938,580	29,937,024	21,386,645	59,775,233	1,099,861	10,699,746	217,837,089
July	102,195,585	32,522,265	23,589,495	65,667,077	1,265,469	11,071,946	236,311,837
August	103,292,252	33,270,045	24,145,544	67,528,186	1,828,958	18,235,039	248,300,024
September	100,340,716	31,697,290	23,069,111	64,225,032	1,502,786	16,234,480	237,069,415
October	100,576,581	33,452,437	25,303,178	65,324,548	1,205,371	21,756,493	247,618,608
November	101,622,333	33,846,143	25,557,190	65,335,455	1,562,219	23,918,892	251,842,232
December	106,594,134	33,661,911	25,502,250	68,217,709	1,470,520	22,747,571	258,194,095
Total	1,222,604,509	403,049,969	292,343,066	780,117,917	16,321,611	223,357,488	2,937,794,560

**FLORIDA MARKETING AREA
FEDERAL ORDER NO. 6**

TOTAL CLASS II UTILIZATION BY POOL HANDLERS

2004,	NONFLUID USED TO PRODUCE	SHRINKAGE	TRANSFERRED OR DIVERTED TO NONPOOL PLANTS	USED TO PRODUCE/ OTHER USES
January	8,974,863	0	4,377,900	15,240,771
February	9,819,400	0	4,750,897	16,489,554
March	9,164,964	0	6,058,447	17,468,440
April	9,516,794	0	3,112,336	16,395,834
May	9,348,007	0	5,804,144	15,946,813
June	9,469,138	0	7,268,258	16,477,873
July	8,400,024	0	5,943,318	14,222,679
August	8,826,915	0	6,025,182	15,524,787
September	7,988,935	0	5,337,231	12,475,047
October	9,182,102	0	5,220,318	16,869,941
November	9,767,328	0	4,688,840	17,091,886
December	8,734,044	0	6,771,105	17,033,427
Total	109,192,514	0	65,357,976	191,237,052

TOTAL CLASS II UTILIZATION

2004	PRODUCT POUNDS	BUTTERFAT POUNDS	BUTTERFAT TEST	DAILY UTILIZATION
January	28,593,534	2,836,534	9.92%	922,372
February	31,059,851	3,195,464	10.29%	1,071,029
March	32,691,851	3,493,191	10.69%	1,054,576
April	29,024,964	3,315,372	11.42%	967,499
May	31,098,964	3,241,080	10.42%	1,003,192
June	33,215,269	3,252,733	9.79%	1,107,176
July	28,566,021	3,199,573	11.20%	921,485
August	30,376,884	3,293,080	10.84%	979,899
September	25,801,213	2,706,262	10.49%	860,040
October	31,272,361	3,415,342	10.92%	1,008,786
November	31,548,054	3,493,004	11.07%	1,051,602
December	32,538,576	3,229,680	9.93%	1,049,631
Total	365,787,542	38,671,315	10.57%	999,420

**FLORIDA MARKETING AREA
FEDERAL ORDER NO. 6**

TOTAL CLASS III UTILIZATION BY POOL HANDLERS

2004	<u>SHRINKAGE 1/</u>	<u>TRANSFERRED OR DIVERTED TO NONPOOL PLANTS & USED TO PRODUCE</u>	<u>OTHER USES 2/</u>
January	0	9,502,986	0
February	3,370,726	10,646,434	954,266
March	0	16,087,547	0
April	0	298,297	0
May	0	26,306,459	0
June	0	21,566,589	0
July	0	5,466,025	0
August	0	615,404	0
September	0	1,995,881	0
October	0	982,130	0
November	0	691,406	0
December	0	2,252,829	0
Total	3,370,726	96,411,987	954,266

TOTAL CLASS III UTILIZATION

2004	<u>PRODUCT POUNDS</u>	<u>BUTTERFAT POUNDS</u>	<u>BUTTERFAT TEST</u>	<u>DAILY AVERAGE UTILIZATION</u>
January	9,502,986	513,798	5.41%	306,548
February	14,971,426	675,968	4.52%	516,256
March	16,087,547	739,426	4.60%	518,953
April	298,297	126,946	42.56%	9,943
May	26,306,459	1,026,134	3.90%	848,595
June	21,566,589	823,904	3.82%	718,886
July	5,466,025	271,770	4.97%	176,323
August	615,404	255,368	41.50%	19,852
September	1,995,881	379,354	19.01%	66,529
October	982,130	419,802	42.74%	31,682
November	691,406	287,626	41.60%	23,047
December	2,252,829	203,816	9.05%	72,672
Total	100,736,979	5,723,912	5.68%	275,238

1/ Pursuant § 1000.43 (b) (1). Assigned to lowest priced class.

2/ Pursuant § 1000.40 (e). Other Uses assigned to lowest priced class.

FLORIDA MARKETING AREA
FEDERAL ORDER NO. 6

TOTAL CLASS IV UTILIZATION BY POOL HANDLERS

2004	<u>ENDING INVENTORY</u>	<u>NONFLUID USED TO FORTIFY</u>	<u>SHRINKAGE 1/</u>	<u>TRANSFERRED OR DIVERTED TO NONPOOL PLANTS</u>	<u>USED TO PRODUCE/ OTHER USES 2/</u>
January	2,653,913	1,469,643	3,684,526	4,998,319	1,561,432
February	9,354,485	1,397,097	0	2,698,562	0
March	9,108,693	1,543,558	3,921,719	1,662,618	1,259,665
April	4,983,820	1,683,161	3,814,898	1,494,204	1,308,998
May	8,007,487	1,314,069	2,895,894	7,806,529	1,956,046
June	7,427,200	1,068,860	3,792,113	2,731,575	1,249,309
July	3,798,867	1,104,704	3,897,401	1,797,876	1,296,230
August	7,987,733	1,384,378	3,385,776	2,873,637	1,690,536
September	7,289,081	1,538,587	2,563,574	4,694,832	1,891,479
October	8,516,534	1,658,835	3,678,298	2,227,127	2,320,338
November	7,049,382	3,301,337	4,056,214	1,580,817	1,416,781
December	5,426,135	3,950,424	4,356,508	8,394,733	1,419,917
Total	81,603,330	21,414,653	40,046,921	42,960,829	17,370,731

TOTAL CLASS IV UTILIZATION

2004	<u>PRODUCT POUNDS</u>	<u>BUTTERFAT POUNDS</u>	<u>BUTTERFAT TEST</u>	<u>DAILY UTILIZATION</u>
January	14,367,833	1,808,492	12.59%	463,478
February	13,450,144	1,298,813	9.66%	463,798
March	17,496,253	1,186,124	6.78%	564,395
April	13,285,081	892,642	6.72%	442,836
May	21,980,025	1,141,945	5.20%	709,033
June	16,269,057	834,582	5.13%	542,302
July	11,895,078	729,494	6.13%	383,712
August	17,322,060	1,079,255	6.23%	558,776
September	17,977,553	1,379,197	7.67%	599,252
October	18,401,132	1,325,760	7.20%	593,585
November	17,404,531	976,537	5.61%	580,151
December	23,547,717	1,652,138	7.02%	759,604
Total	203,396,464	14,304,979	7.03%	555,728

1/ Pursuant § 1000.43 (b) (1). Shrinkage assigned to lowest priced class.

2/ Pursuant § 1000.40 (d) and (e). Used to Produce, Bulk Ending Inventory & NFMP-UTF assigned to Class IV. Other Uses assigned to lowest priced class.

FLORIDA MARKETING AREA
FEDERAL ORDER NO. 6

ANNOUNCED FEDERAL ORDER CLASS & UNIFORM PRICES

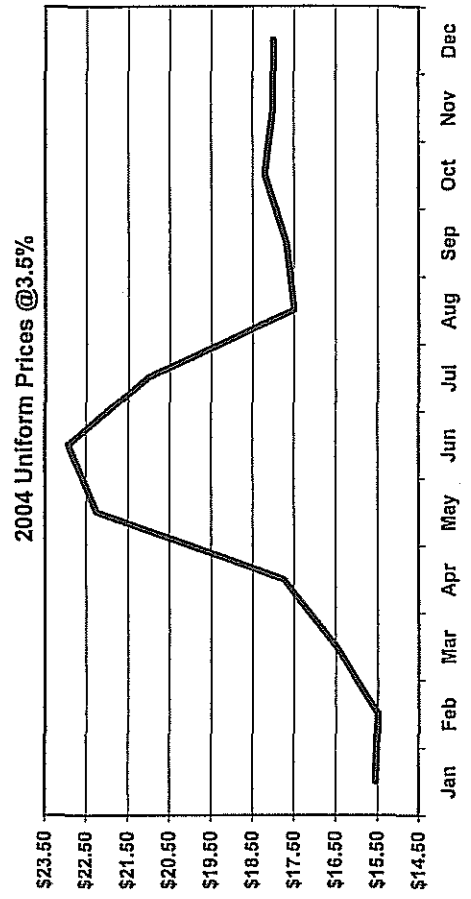
CLASS I*		
2004	Skim	Milk @ 3.5%
January	\$11.46	\$15.85
February	\$10.55	\$15.59
March	\$9.96	\$15.94
April	\$9.96	\$17.64
May	\$15.50	\$23.65
June	\$16.98	\$25.13
July	\$14.95	\$21.95
August	\$11.55	\$18.62
September	\$11.96	\$17.94
October	\$12.53	\$18.78
November	\$11.81	\$18.29
December	\$12.12	\$18.43
Average	\$12.44	\$18.98

CLASS II		
2004	Skim	Milk @ 3.5%
January	\$6.64	\$11.67
February	\$6.63	\$12.90
March	\$6.66	\$14.79
April	\$6.66	\$15.21
May	\$6.74	\$15.03
June	\$6.91	\$14.31
July	\$7.03	\$14.00
August	\$7.07	\$13.13
September	\$7.11	\$13.66
October	\$7.14	\$13.57
November	\$7.14	\$14.09
December	\$7.07	\$13.98
Average	\$6.90	\$13.86

CLASS III		
2004	Skim	Milk @ 3.5%
January	\$6.60	\$11.61
February	\$5.61	\$11.89
March	\$6.38	\$14.49
April	\$11.30	\$19.66
May	\$12.52	\$20.58
June	\$10.43	\$17.68
July	\$7.94	\$14.85
August	\$8.04	\$14.04
September	\$8.23	\$14.72
October	\$7.78	\$14.16
November	\$8.00	\$14.89
December	\$9.34	\$16.14
Average	\$8.51	\$15.39

CLASS IV		
2004	Skim	Milk @ 3.5%
January	\$5.94	\$10.97
February	\$5.94	\$12.21
March	\$5.97	\$14.10
April	\$6.03	\$14.57
May	\$6.22	\$14.50
June	\$6.32	\$13.72
July	\$6.34	\$13.31
August	\$6.40	\$12.46
September	\$6.45	\$13.00
October	\$6.38	\$12.81
November	\$6.39	\$13.34
December	\$6.52	\$13.42
Average	\$6.24	\$13.20

UNIFORM*		
2004	Skim	Milk @ 3.5%
January	\$10.90	\$15.54
February	\$9.85	\$15.48
March	\$9.46	\$16.48
April	\$9.72	\$17.74
May	\$14.13	\$22.23
June	\$15.29	\$22.93
July	\$14.12	\$21.01
August	\$10.96	\$17.49
September	\$11.51	\$17.69
October	\$11.92	\$18.19
November	\$11.36	\$17.99
December	\$11.48	\$18.00
Average	\$11.73	\$18.40



* Class 1 and Uniform Prices are at Hillsborough County (Tampa), Florida

**FLORIDA MARKETING AREA
FEDERAL ORDER NO. 6**

**NASS DAIRY PRODUCT PRICE AVERAGES USED IN
FEDERAL MILK ORDER PRICE FORMULAS**

Class I (Skim, Bfat), Class II (Skim, Nonfat Solids)

2004	<u>Weeks Ending</u>	<u>Butter</u>	<u>Nonfat Dry Milk</u>	<u>Cheese</u>	<u>Dry Whey</u>
Dollars per pound					
January	12/6,13	1.2219	0.8072	1.3227	0.1967
February	1/10,17	1.3687	0.8051	1.2977	0.1824
March	2/7,14	1.5879	0.8085	1.3054	0.1691
April	3/6,13	1.9921	0.8090	1.4582	0.1706
May	4/10,17	2.1514	0.8179	2.0530	0.2611
June	5/8,15	2.1633	0.8372	2.1838	0.2975
July	6/5,12	1.8723	0.8500	1.8683	0.2942
August	7/10,17	1.8610	0.8552	1.5439	0.2600
September	8/7,14	1.6058	0.8596	1.5047	0.2280
October	9/4,11	1.6746	0.8622	1.5958	0.2155
November	10/9,16	1.7223	0.8626	1.5373	0.2241
December	11/6,13	1.6845	0.8553	1.5481	0.2338

Class II (Bfat), Class III, Class IV, Components

2004	<u>Weeks Ending</u>	<u>Butter</u>	<u>Nonfat Dry Milk</u>	<u>Cheese</u>	<u>Dry Whey</u>
Dollars per pound					
January	1/3,10,17,24	1.3632	0.8062	1.3023	0.1801
February	1/31,2/7,14,21,28	1.6582	0.8064	1.3260	0.1677
March	3/6,13,20,27	2.0994	0.8101	1.5680	0.1817
April	4/3,10,17,24	2.1994	0.8171	2.0520	0.2602
May	5/1,8,15,22,29	2.1385	0.8383	2.1266	0.2992
June	6/5,12,19,26	1.9290	0.8497	1.8411	0.2890
July	7/3,10,17,24	1.8269	0.8513	1.5695	0.2607
August	7/31,8/7,14,21,28	1.6101	0.8584	1.5167	0.2246
September	9/4,11,18,25	1.7278	0.8639	1.5867	0.2162
October	10/2,9,16,23,30	1.7000	0.8565	1.5256	0.2247
November	11/6,13,20,27	1.8224	0.8570	1.5886	0.2367
December	12/4,11,18,25	1.8122	0.8713	1.7146	0.2423

7

7

7

**FLORIDA MARKETING AREA
FEDERAL ORDER NO. 6
2004 POOL HANDLERS**

Fluid Milk Distributing Pool Plants §1006.7(a)

	J	F	M	A	M	J	J	A	S	O	N	D	
Gustafson's Dairy, Inc. Green Cove Springs, Florida	X	X	X	X	Plant Renamed Gustafson's, LLC								
Gustafson's, LLC Green Cove Springs, Florida				X	X	X	X	X	X	X	X	X	
Hato Patrero Farms, Inc. Clewiston, FL							X	X		X	X		
McArthur Dairy, Inc. Miami, Florida	X	X	X	X	X	X	X	X	X	X	X	X	
Morningstar Foods Jacksonville, Florida	X	X	X	X	X	X	X	X	X	X	X	X	
Publix Supermarkets, Inc. Deerfield Beach, Florida	X	X	X	X	X	X	X	X	X	X	X	X	
Publix Supermarkets, Inc. Lakeland, Florida	X	X	X	X	X	X	X	X	X	X	X	X	
Sunbelt Dairy & Food Company Tampa, Florida	X	X	X	X	X	X	X	X	X	X	X	X	
T.G. Lee Foods, Inc. Orange City, Florida	X	X	X	X	X	X	X	X	X	X	X	X	
T.G. Lee Foods, Inc. Orlando, Florida	X	X	X	X	X	X	X	X	X	X	X	X	
Velda Farms, LLC Miami, Florida	X	X	X	X	X	X	X	X	X	X	X	X	
Velda Farms, LLC Winter Haven, Florida	X	X	X	X	X	X	X	X	X	X	X	X	
Winn-Dixie Stores, Inc. Miami, Florida	X	X	X	X	X	Plant Closed							
Winn-Dixie Stores, Inc. Plant City, Florida	X	X	X	X	X	X	X	X	X	X	X	X	

**FLORIDA MARKETING AREA
FEDERAL ORDER NO. 6
2004 POOL HANDLERS**

Cooperatives Qualifying as Pool Handlers §1006.9(c)

	J	F	M	A	M	J	J	A	S	O	N	D
^r Dairy Farmers of America, Inc. Kansas City, Missouri	X	X	X	X	X	X	X	X	X	X	X	X
Lone Star Milk Producers, Inc. Windthorst, Texas									X			
Maryland/Virginia Milk Producers Reston, Virginia	X	X	X	X	X	X			X	X	X	X
Select Milk Producers Artesia, New Mexico	X		X					X	X	X	X	X
Southeast Milk, Inc. Bellevue, Florida	X	X	X	X	X	X	X	X	X	X	X	X

**FLORIDA MARKETING AREA
FEDERAL ORDER NO. 6
NONPOOL PLANTS WITH ROUTE DISPOSITION IN THE AREA - 2004**

J	F	M	A	M	J	J	A	S	O	N	D
----------	----------	----------	----------	----------	----------	----------	----------	----------	----------	----------	----------

Other Order Plants §1000.8(a)

Federal Order #1

California Natural Products Savannah, Georgia								X				
Dannon Milk Products West Jordan, Utah	X	X	X	With Termination of FO 135, Plant Became Partially Regulated								
H. P. Hood, Inc. Oneida, New York	X	X	X	X	X	X	X	X	X	X	X	X
H. P. Hood, Inc. Winchester, Virginia	X	X	X	X	X	X	X	X	X	X	X	X
Midland Farms, Inc. Menands, New York	X	X	X	X	X	X	X	X	X	X	X	X
Morningstar Foods Fraser, New York										X	X	X
Morningstar Foods Mount Crawford, Virginia	X	X	X	X	X	X	X	X	X	X	X	X
Stueben Foods Elma, New York											X	X
Tuscan/Lehigh Valley Dairies Union, New York	X	X	X	X	X							

Federal Order #5

Milkco Inc. Asheville, North Carolina	X	X	X	X	X	X	X	X	X	X	X	X
Regis Milk Company Charleston, South Carolina	X	X	X	X	X	X	X	X	X	X	X	X
Winn-Dixie Stores, Inc. Greenville, South Carolina	X	X	X	X	X	X	X	X	X	X	X	X
Winn-Dixie Stores, Inc. High Point, North Carolina	X	X	X	X	X	X	X	X	X	X	X	X

Federal Order #7

Barber Pure Milk Company Birmingham, Alabama	X	X	X	X	X	X	X	X	X	X	X	X
Country Delite Farms Nashville, Tennessee	X	X	X	X	X	X	X	X	X	X	X	X

**FLORIDA MARKETING AREA
FEDERAL ORDER NO. 6
NONPOOL PLANTS WITH ROUTE DISPOSITION IN THE AREA - 2004**

	J	F	M	A	M	J	J	A	S	O	N	D
Dairy Fresh of Alabama, LLC Cowarts, Alabama	X	X	X	X	X	X	X	X	X	X	X	X
Dairy Fresh of Louisiana, LLC Baker, Louisiana									X			
Morningstar Foods Murray, Kentucky	X	X	X	X	X	X	X	X	X	X	X	X
New Atlanta Dairies, Inc. Atlanta, Georgia	X	X	Name Changed to New Atlanta Trust Dairy									
New Atlanta Trust Dairy Atlanta, Georgia			X	X	X	X	X	X	X	X	X	X
PublixSupermarkets, Inc. Atlanta, Georgia	X	X	X	X	X	X	X	X	X	X	X	X
Turner Holdings LLC/Gold Star Little Rock, Arkansas	X	X	X	X	X	X	X	X	X	X	X	X
Winn-Dixie Stores, Inc. Montgomery, Alabama	X	X	X	X	X	X	X	X	X	X	X	X

Federal Order #30

Kohler Mix Specialties, Inc. White Bear Lake, Minnesota	X	X	X	Plant Became Partially Regulated								
Lifeway Foods, Inc. Morton Grove, Illinois	X	X	X	X	X	X	X	X	X	X	X	X
Pride of Main Street Dairy, LLC Sauk Centre, Minnesota	X	X	X	X	X	X	X	X	X	X	X	X
Schroeder Milk Company, Inc. Maplewood, Minnesota	X	X	X	X	X	X	X	X	X	X	X	X

Federal Order #33

Parmalat-White Knight Packaging Wyoming, Michigan	X	X	X	X	X	X	X	X	X	X	X	X
--	---	---	---	---	---	---	---	---	---	---	---	---

Federal Order #126

Morningstar Foods Suphur Springs, Texas	X	X	X	X	X	X	X	X	X	X	X	X
Promised Land Dairy Floresville, Texas	X	X	X	X	X	X	X	X	X	X	X	X

**FLORIDA MARKETING AREA
FEDERAL ORDER NO. 6
NONPOOL PLANTS WITH ROUTE DISPOSITION IN THE AREA - 2004**

	J	F	M	A	M	J	J	A	S	O	N	D
Western Quality Food Products Cedar City, Utah				X								

Federal Order #131

Shamrock Foods Company Phoenix, Arizona										X		
--	--	--	--	--	--	--	--	--	--	---	--	--

Federal Order #135

Gossner Foods Logan, Utah	X	X	X	With Termination of FO 135, Plant Became Partially Regulated								
------------------------------	---	---	---	--	--	--	--	--	--	--	--	--

Exempt Distributing Plants §1000.8(e)

Golden Fleece Lecanto, Florida	X	X	X	X	X	X	X	X	X	X	X	X
Hato Patrero Farms, Inc. Clewiston, Florida	X	X	X	X	X	X			X			X
Kurtz & Sons Dairy Live Oak, Florida				X	X	X	X	X	X	X	X	X
M & B Dairy Products Tampa, Florida	X	X	X	X	X	X	X	X	X	X	X	X

Partially Regulated Distributing Plants §1000.8(c)

Alta Dena Dairy City of Industry, California										X	X	X
Cacique Company City of Industry, California	X	X	X	X	X	X	X	X	X	X	X	X
Dannon Milk Products Fort Worth, Texas	X	X	X	X	X	X	X	X	X	X	X	X
Dannon Milk Products West Jordan, Utah	FO 1 Plant			X	X	X	X	X	X	X	X	X
Gossner Foods Logan, Utah	FO 135 Plant			X	X	X	X	X	X	X	X	X

**FLORIDA MARKETING AREA
FEDERAL ORDER NO. 6
NONPOOL PLANTS WITH ROUTE DISPOSITION IN THE AREA - 2004**

	J	F	M	A	M	J	J	A	S	O	N	D
Kohler Mix Specialty White Bear Lake, Minnesota				X	X	X	X	X	X	X	X	X
Jasper Products, LLC Joplin, Missouri	X	X	X	X	X	X	X	X	X	X	X	X
Milk Products of Alabama Decatur, Alabama	X	X	X	X	X	X	X	X	X	X	X	X

Producer-Handler Plants §1000.8(b)

Aurora Organic Dairy Platteville, Colorado												X
---	--	--	--	--	--	--	--	--	--	--	--	---

