



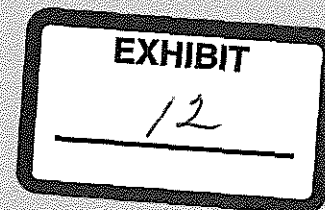
United States Department of Agriculture

Agricultural Marketing Service - Dairy Programs

**Florida Marketing Area
Federal Order No. 6**

2005 ANNUAL STATISTICS

Sue L. Mosley
Market Administrator
P.O. Box 491778
Lawrenceville, Georgia 30049



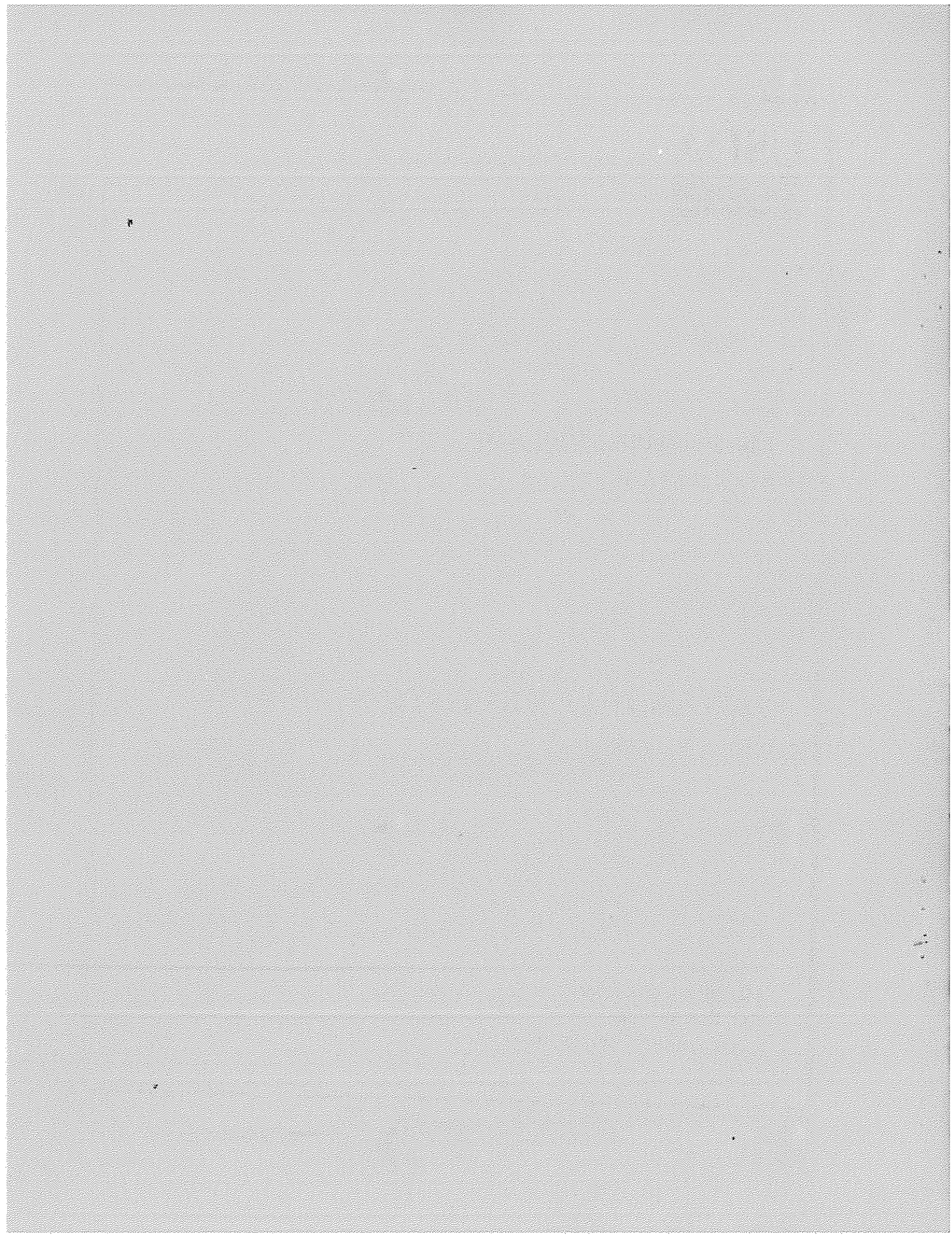


TABLE OF CONTENTS

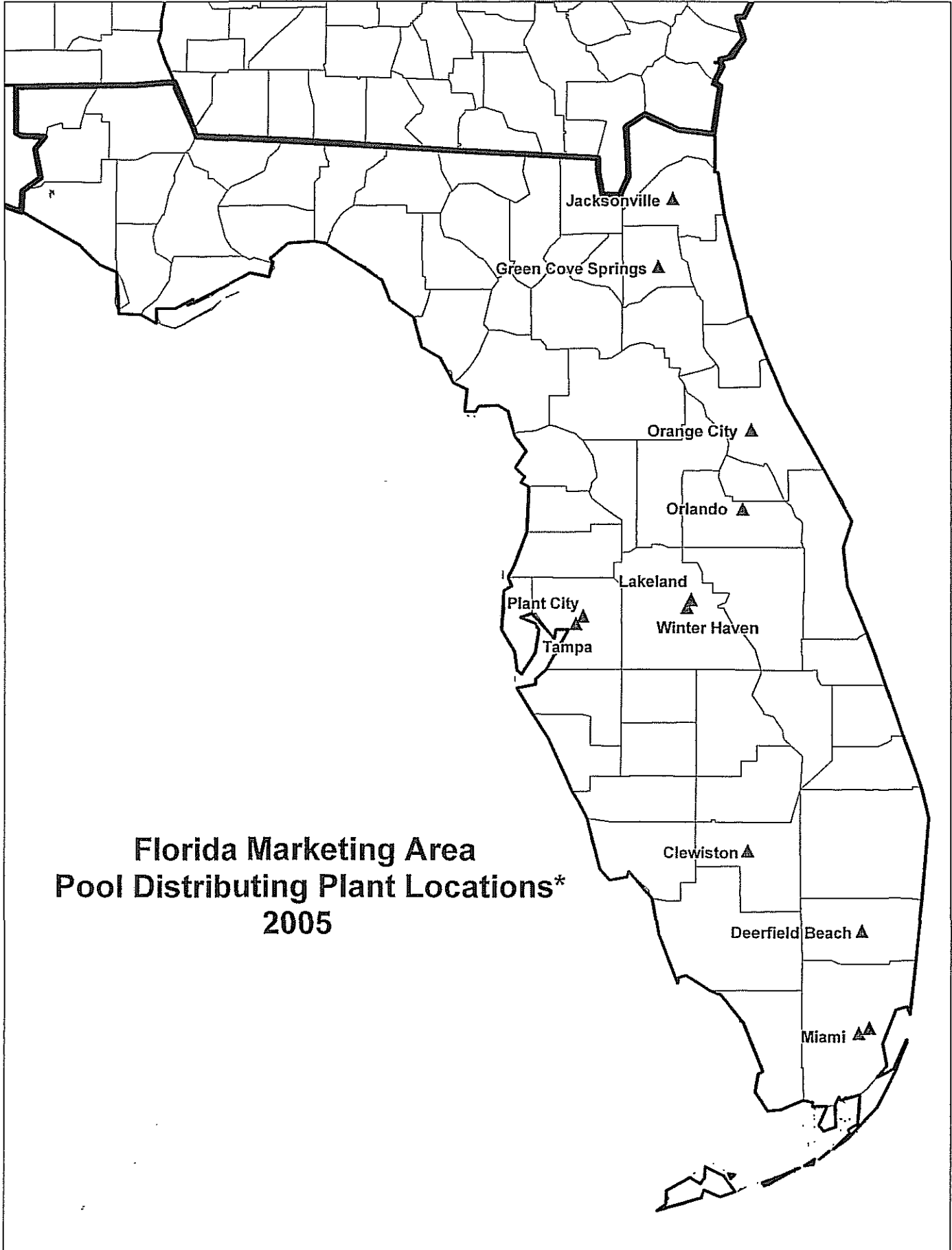
Florida Marketing Area Map	1
Receipts and Classification of Producer Milk	2
Receipts and Classification of Other Source Milk, Overages, and Opening Inventories	3
Classification of Total Receipts	4
Class I Utilization by Pool Handlers	5
Route Disposition by Pool and Non-Pool Plants	6
Total Class I Route Disposition by Pool Plants	7
Total Class I Route Disposition Inside the Marketing Area	8
Class II Utilization by Pool Handlers	9
Class III Utilization by Pool Handlers	10
Class IV Utilization by Pool Handlers	11
Announced Federal Order Class and Uniform Prices	12
NASS Dairy Product Price Averages Used In Federal Milk Order Price Formulas	13
2005 Pool Handlers	14
2005 Nonpool Handlers with Route Disposition in the Marketing Area	16

The data presented herein represents a compilation of general information pertaining to the marketing of milk in the Florida Marketing Area during 2005. Except for the corrections of mathematical and other obvious errors, the data presented were taken from reports of receipts and utilization, payroll reports, and reports of nonpool handlers that were submitted to the office of the Market Administrator as well as publications released by this office.

This information is prepared pursuant to Section 1000.25 (c)(8) of the General Provisions of Federal Milk Marketing Orders, Part 1000 which is incorporated by reference and made a part of Federal Order Number 6. Part 1000 states that the Market Administrator shall "Prepare and disseminate publicly for the benefit of producers, handlers, and consumers such statistics and other information concerning operation of the order and facts relevant to the provisions thereof (or proposed provisions) as do not reveal confidential information."

"The U.S. Department of Agriculture (USDA) prohibits discrimination in all its programs and activities on the basis of race, color, national origin, age, disability, and where applicable, sex, marital status, familial status, parental status, religion, sexual orientation, genetic information, political beliefs, reprisal, or because all or a part of an individual's income is derived from any public assistance program. (Not all prohibited bases apply to all programs.) Persons with disabilities who require alternative means for communication of program information (Braille, large print, audiotape, etc.) should contact USDA's TARGET Center at (202) 720-2600 (voice and TDD). To file a complaint of discrimination write to USDA, Director, Office of Civil Rights, 1400 Independence Avenue, S.W., Washington, D.C. 20250-9410 or call (800) 795-3272 (voice) or (202) 720-6382 (TDD). USDA is an equal opportunity provider and employer."





**Florida Marketing Area
Pool Distributing Plant Locations*
2005**

**FLORIDA MARKETING AREA
FEDERAL ORDER NO. 6**

RECEIPTS AND CLASSIFICATION OF PRODUCER MILK AND BUTTERFAT

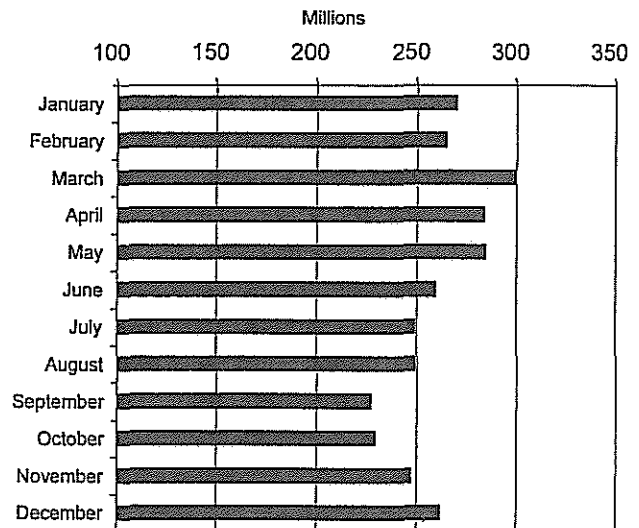
2005	CLASS I			CLASS II		
	PRODUCT POUNDS	%	BUTTERFAT POUNDS	PRODUCT POUNDS	%	BUTTERFAT POUNDS
January	228,530,846	84.67	4,802,412	20,037,956	7.42	3,071,429
February	209,459,506	79.12	4,395,378	19,746,529	7.46	3,240,530
March	230,934,285	77.09	4,862,072	21,444,426	7.16	3,302,064
April	223,900,945	78.93	4,707,247	19,354,110	6.82	3,411,662
May	208,300,038	73.28	4,499,785	20,387,908	7.17	3,244,497
June	199,018,503	76.75	4,398,626	20,227,773	7.80	3,253,437
July	203,229,788	81.59	4,473,587	18,953,014	7.61	3,202,865
August	218,382,489	87.63	4,669,817	20,690,303	8.30	3,611,135
September	201,401,812	88.68	4,303,554	18,682,627	8.23	3,225,118
October	199,793,372	87.17	4,320,371	19,045,737	8.31	3,252,393
November	218,144,987	88.23	4,923,766	18,751,208	7.58	3,262,022
December	231,458,667	88.33	5,266,486	18,648,566	7.12	2,858,857
Total	2,572,555,238	82.31%	55,623,101	235,970,157	7.55%	38,936,009

2005	CLASS III			CLASS IV		
	PRODUCT POUNDS	%	BUTTERFAT POUNDS	PRODUCT POUNDS	%	BUTTERFAT POUNDS
January	9,356,239	3.47	437,724	11,995,956	4.44	1,418,128
February	25,917,229	9.79	315,038	9,602,049	3.63	1,565,617
March	34,397,625	11.48	464,015	12,774,721	4.26	2,024,437
April	32,348,431	11.40	413,692	8,081,712	2.85	1,478,846
May	42,411,104	14.92	650,914	13,136,370	4.62	1,586,902
June	30,006,060	11.57	318,734	10,062,229	3.88	1,169,206
July	14,708,261	5.90	138,527	12,193,663	4.90	1,109,358
August	822,895	0.33	63,887	9,309,757	3.74	591,892
September	1,228,125	0.54	64,506	5,803,605	2.56	640,154
October	739,703	0.32	156,780	9,632,426	4.20	687,210
November	695,373	0.28	70,150	9,657,541	3.91	880,171
December	2,937,087	1.12	106,092	9,001,602	3.44	1,531,891
Total	195,568,132	6.26%	3,200,059	121,251,631	3.88%	14,683,812

TOTAL PRODUCER RECEIPTS

2005	PRODUCT POUNDS	%	BUTTERFAT POUNDS
January	269,920,997	100.00	9,729,693
February	264,725,313	100.00	9,516,563
March	299,551,057	100.00	10,652,588
April	283,685,198	100.00	10,011,447
May	284,235,420	100.00	9,982,098
June	259,314,565	100.00	9,140,003
July	249,084,726	100.00	8,924,337
August	249,205,444	100.00	8,936,731
September	227,116,169	100.00	8,233,332
October	229,211,238	100.00	8,416,754
November	247,249,109	100.00	9,136,109
December	262,045,922	100.00	9,763,326
Total	3,125,345,158	100.00%	112,442,981

Monthly Producer Receipts



**FLORIDA MARKETING AREA
FEDERAL ORDER NO. 6**

**RECEIPTS AND CLASSIFICATION OF OTHER SOURCE MILK,
OVERAGES, AND OPENING INVENTORIES**

2005	<u>OTHER SOURCE MILK</u>	<u>OVERAGES</u>	<u>OPENING INVENTORIES</u>	<u>TOTAL</u>
January	15,480,193	844	18,022,633	33,503,670
February	14,951,136	2,073	20,378,008	35,331,217
March	15,804,232	22,570	18,606,441	34,433,243
April	16,300,803	95,933	19,296,933	35,693,669
May	14,709,043	0	18,431,708	33,140,751
June	13,583,012	6,268	18,987,410	32,576,690
July	13,938,788	24,544	20,062,652	34,025,984
August	32,253,471	22,710	21,346,375	53,622,556
September	36,786,636	0	23,431,459	60,218,095
October	39,438,152	0	19,697,025	59,135,177
November	32,086,147	15,441	21,276,760	53,378,348
December	20,150,663	155,138	24,477,553	44,783,354
Total	265,482,276	345,521	244,014,957	509,842,754

2005	<u>CLASS I</u>	<u>CLASS II</u>	<u>CLASS III</u>	<u>CLASS IV</u>
January	17,465,150	8,699,495	0	7,339,025
February	16,345,530	9,581,091	0	9,404,596
March	16,484,807	10,581,717	4,425	7,362,294
April	15,700,805	11,916,517	97,113	7,979,234
May	18,196,339	9,459,888	0	5,484,524
June	14,746,879	9,026,885	11,788	8,791,138
July	15,710,318	9,406,482	0	8,909,184
August	28,948,850	11,721,778	97,335	12,854,593
September	37,172,228	10,477,790	90,293	12,477,784
October	40,624,311	8,833,906	201,180	9,475,780
November	29,650,226	10,256,379	140,720	13,331,023
December	22,729,718	9,219,650	56,446	12,777,540
Total	273,775,161	119,181,578	699,300	116,186,715

**FLORIDA MARKETING AREA
FEDERAL ORDER NO. 6**

CLASSIFICATION OF TOTAL RECEIPTS

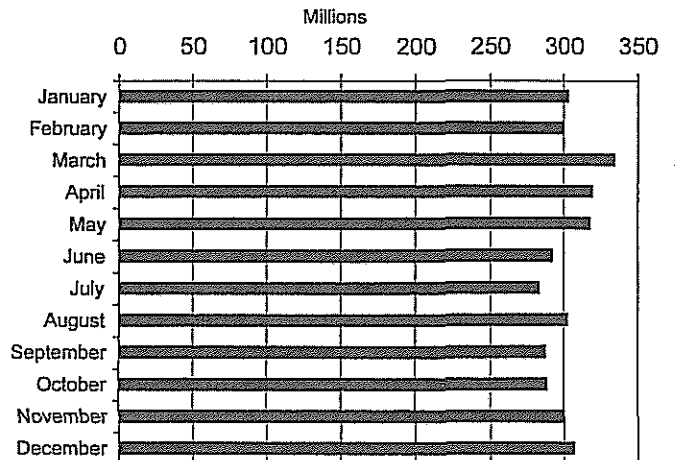
2005	CLASS I			CLASS II		
	PRODUCT POUNDS	BUTTERFAT POUNDS	BUTTERFAT TEST	PRODUCT POUNDS	BUTTERFAT POUNDS	BUTTERFAT TEST
January	245,995,996	5,167,755	2.10%	28,737,451	3,246,751	11.30%
February	225,805,036	4,738,808	2.10%	29,327,620	3,355,479	11.44%
March	247,419,092	5,197,915	2.10%	32,026,143	3,401,424	10.62%
April	239,601,750	5,031,080	2.10%	31,270,627	3,613,834	11.56%
May	226,496,377	4,862,066	2.15%	29,847,796	3,439,207	11.52%
June	213,765,382	4,701,578	2.20%	29,254,658	3,364,002	11.50%
July	218,940,106	4,804,274	2.19%	28,359,496	3,222,578	11.36%
August	247,331,339	5,257,412	2.13%	32,412,081	3,745,724	11.56%
September	238,574,040	5,048,891	2.12%	29,160,417	3,289,295	11.28%
October	240,417,683	5,143,629	2.14%	27,879,643	3,253,623	11.67%
November	247,795,213	5,554,725	2.24%	29,007,587	3,370,759	11.62%
December	254,188,385	5,844,414	2.30%	27,868,216	2,915,620	10.46%
Total	2,846,330,399	61,352,547	2.16%	355,151,735	40,218,296	11.32%

2005	CLASS III			CLASS IV		
	PRODUCT POUNDS	BUTTERFAT POUNDS	BUTTERFAT TEST	PRODUCT POUNDS	BUTTERFAT POUNDS	BUTTERFAT TEST
January	9,356,239	437,724	4.68%	19,334,981	1,855,515	9.60%
February	25,917,229	315,038	1.22%	19,006,645	2,059,712	10.84%
March	34,402,050	464,172	1.35%	20,137,015	2,468,781	12.26%
April	32,445,544	426,178	1.31%	16,060,946	1,926,436	11.99%
May	42,411,104	650,914	1.53%	18,620,894	1,966,762	10.56%
June	30,017,848	324,462	1.08%	18,853,367	1,579,967	8.38%
July	14,708,261	138,527	0.94%	21,102,847	1,507,153	7.14%
August	920,230	91,626	9.96%	22,164,350	1,326,073	5.98%
September	1,318,418	66,718	5.06%	18,281,389	1,507,594	8.25%
October	940,883	192,353	20.44%	19,108,206	1,540,669	8.06%
November	836,093	127,367	15.23%	22,988,564	1,641,259	7.14%
December	2,993,533	106,129	3.55%	21,779,142	2,098,107	9.63%
Total	196,267,432	3,341,208	1.70%	237,438,346	21,478,028	9.05%

TOTAL RECEIPTS

2005	PRODUCT POUNDS	BUTTERFAT POUNDS	BUTTERFAT TEST
January	303,424,667	10,707,745	3.53%
February	300,056,530	10,469,037	3.49%
March	333,984,300	11,532,292	3.45%
April	319,378,867	10,997,528	3.44%
May	317,376,171	10,918,949	3.44%
June	291,891,255	9,970,009	3.42%
July	283,110,710	9,672,532	3.42%
August	302,828,000	10,420,835	3.44%
September	287,334,264	9,912,498	3.45%
October	288,346,415	10,130,274	3.51%
November	300,627,457	10,694,110	3.56%
December	306,829,276	10,964,270	3.57%
Total	3,635,187,912	126,390,079	3.48%

Monthly Total Receipts



**FLORIDA MARKETING AREA
FEDERAL ORDER NO. 6**

TOTAL CLASS I UTILIZATION BY POOL HANDLERS

2005	TOTAL CLASS I ROUTE DISPOSITION	TRANSFERRED OR DIVERTED TO NONPOOL PLANTS	ENDING INVENTORY	CLASS I SHRINKAGE
January	230,377,172	1,244,421	12,507,969	1,866,434
February	209,910,810	1,190,486	12,862,138	1,841,602
March	233,118,806	1,313,479	12,010,926	975,881
April	222,448,347	1,282,023	14,806,273	1,065,107
May	213,106,336	989,341	11,609,855	790,845
June	200,134,519	335,942	12,667,096	627,825
July	206,142,316	419,502	11,656,892	721,396
August	232,297,474	175,637	14,456,883	401,345
September	222,867,764	328,396	14,646,242	731,638
October	225,429,628	630,446	13,152,439	1,205,170
November	231,323,887	688,615	14,793,865	988,846
December	238,405,812	306,253	14,912,874	563,446
Total	2,665,562,871	8,904,541	160,083,452	11,779,535

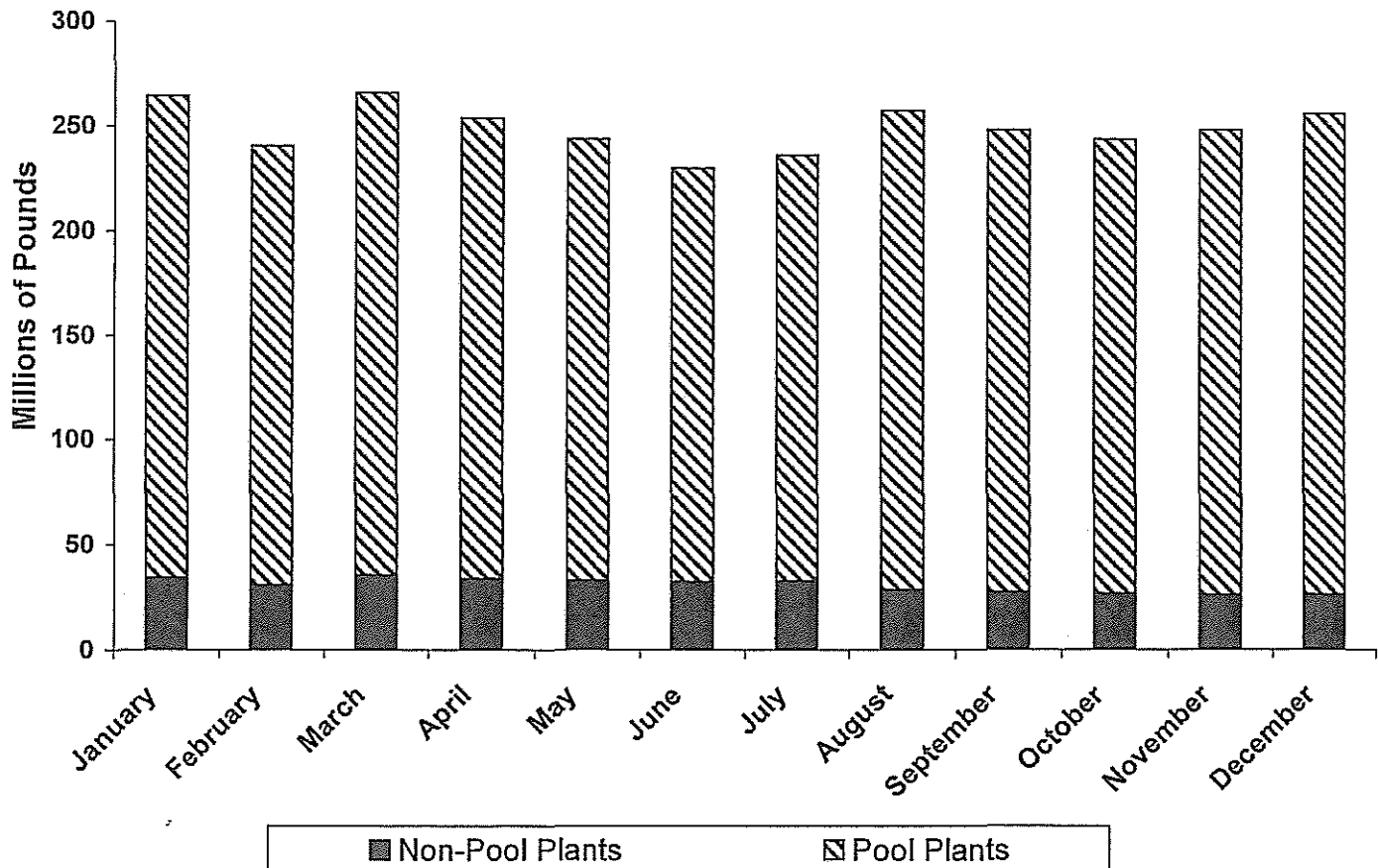
TOTAL CLASS I UTILIZATION

2005	PRODUCT POUNDS	BUTTERFAT POUNDS	BUTTERFAT TEST	DAILY AVERAGE UTILIZATION
January	245,995,996	5,167,755	2.10%	7,935,355
February	225,805,036	4,738,808	2.10%	8,064,466
March	247,419,092	5,197,915	2.10%	7,981,261
April	239,601,750	5,031,080	2.10%	7,986,725
May	226,496,377	4,862,066	2.15%	7,306,335
June	213,765,382	4,701,578	2.20%	7,125,513
July	218,940,106	4,804,274	2.19%	7,062,584
August	247,331,339	5,257,412	2.13%	7,978,430
September	238,574,040	5,048,891	2.12%	7,952,468
October	240,417,683	5,143,629	2.14%	7,755,409
November	247,795,213	5,554,725	2.24%	8,259,840
December	254,188,385	5,844,414	2.30%	8,199,625
Total	2,846,330,399	61,352,547	2.16%	7,798,165

**FLORIDA MARKETING AREA
FEDERAL ORDER 6
ROUTE DISPOSITION IN THE MARKET BY POOL AND NON-POOL PLANTS**

<u>2005</u>	<u>IN-AREA SALES NONPOOL PLANTS</u>	<u>% NONPOOL PLANTS</u>	<u>IN-AREA SALES F.O. 6 POOL PLANTS</u>	<u>% POOL PLANTS</u>	<u>TOTAL F.O. 6 IN-AREA SALES</u>
January	34,126,429	12.92%	230,019,867	87.08%	264,146,296
February	30,673,454	12.77%	209,584,216	87.23%	240,257,670
March	35,345,362	13.32%	230,033,104	86.68%	265,378,466
April	33,525,517	13.25%	219,580,107	86.75%	253,105,624
May	32,784,540	13.48%	210,397,016	86.52%	243,181,556
June	32,088,187	13.99%	197,292,294	86.01%	229,380,481
July	32,450,089	13.77%	203,164,642	86.23%	235,614,731
August	28,342,311	11.05%	228,234,590	88.95%	256,576,901
September	27,230,214	11.02%	219,968,331	88.98%	247,198,545
October	26,089,111	10.75%	216,660,513	89.25%	242,749,624
November	25,509,834	10.31%	221,932,145	89.69%	247,441,979
December	25,783,271	10.10%	229,450,325	89.90%	255,233,596
Total	363,948,319	12.21%	2,616,317,150	87.79%	2,980,265,469

2005 Class I Disposition by Pool & Non-Pool Plants



**FLORIDA MARKETING AREA
FEDERAL ORDER NO. 6**

TOTAL DISPOSITION ON ROUTES INSIDE THE MARKETING AREA BY POOL PLANTS

2005	WHOLE MILK	FAT FREE MILK	LOW FAT MILK	REDUCED FAT MILK	CULTURED MILK	FLAVORED MILK&DRINKS	TOTAL IN AREA
January	93,575,632	32,613,660	26,264,152	60,033,603	1,142,835	16,389,985	230,019,867
February	83,892,023	30,079,358	23,333,112	54,603,317	1,097,228	16,579,178	209,584,216
March	92,722,093	32,827,114	25,708,810	60,888,507	1,143,447	16,743,133	230,033,104
April	88,937,530	29,852,060	24,257,533	57,254,081	1,005,568	18,273,335	219,580,107
May	87,520,446	28,154,193	22,930,276	54,642,923	950,454	16,198,724	210,397,016
June	85,250,023	26,369,997	21,214,984	55,270,536	892,127	8,294,627	197,292,294
July	87,611,190	27,389,914	21,564,281	57,662,937	910,090	8,026,230	203,164,642
August	92,286,691	29,662,950	24,778,465	62,737,889	902,689	17,865,906	228,234,590
September	87,787,713	28,309,771	23,964,744	59,941,545	908,215	19,056,343	219,968,331
October	85,745,222	29,544,927	24,256,105	59,590,407	922,213	16,601,639	216,660,513
November	87,438,939	29,110,879	24,324,641	59,589,274	1,236,805	20,231,607	221,932,145
December	92,007,018	29,631,731	23,906,165	62,044,134	1,250,693	20,610,584	229,450,325
Total	1,064,774,520	353,546,554	286,503,268	704,259,153	12,362,364	194,871,291	2,616,317,150

TOTAL DISPOSITION ON ROUTES OUTSIDE THE MARKETING AREA BY POOL PLANTS

2005	WHOLE MILK	FAT FREE MILK	LOW FAT MILK	REDUCED FAT MILK	CULTURED MILK	FLAVORED MILK&DRINKS	TOTAL OUT OF AREA
January	84,130	95,630	49,455	111,866	1,089	15,135	357,305
February	73,784	88,300	45,744	95,273	853	22,640	326,594
March	1,620,561	327,449	184,440	855,397	66,369	31,486	3,085,702
April	1,505,818	271,556	149,434	804,837	94,355	42,240	2,868,240
May	1,495,525	229,660	126,128	753,240	74,458	30,309	2,709,320
June	1,588,345	225,251	127,164	786,157	73,295	42,013	2,842,225
July	1,638,213	226,968	130,002	838,413	83,710	60,368	2,977,674
August	2,074,160	482,531	184,811	1,220,561	64,893	35,928	4,062,884
September	1,548,989	244,406	140,205	841,747	69,783	54,303	2,899,433
October	4,513,545	872,559	704,787	2,522,038	72,479	83,707	8,769,115
November	4,561,311	850,956	686,956	2,481,080	121,214	690,225	9,391,742
December	4,533,823	827,322	703,886	2,397,401	108,939	384,116	8,955,487
Total	25,238,204	4,742,588	3,233,012	13,708,010	831,437	1,492,470	49,245,721

TOTAL DISPOSITION ON ROUTES IN AND OUT OF THE MARKETING AREA BY POOL PLANTS

2005	WHOLE MILK	FAT FREE MILK	LOW FAT MILK	REDUCED FAT MILK	CULTURED MILK	FLAVORED MILK&DRINKS	TOTAL SALES
January	93,659,762	32,709,290	26,313,607	60,145,469	1,143,924	16,405,120	230,377,172
February	83,965,807	30,167,658	23,378,856	54,698,590	1,098,081	16,601,818	209,910,810
March	94,342,654	33,154,563	25,893,250	61,743,904	1,209,816	16,774,619	233,118,806
April	90,443,348	30,123,616	24,406,967	58,058,918	1,099,923	18,315,575	222,448,347
May	89,015,971	28,383,853	23,056,404	55,396,163	1,024,912	16,229,033	213,106,336
June	86,838,368	26,595,248	21,342,148	56,056,693	965,422	8,336,640	200,134,519
July	89,249,403	27,616,882	21,694,283	58,501,350	993,800	8,086,598	206,142,316
August	94,360,851	30,145,481	24,963,276	63,958,450	967,582	17,901,834	232,297,474
September	89,336,702	28,554,177	24,104,949	60,783,292	977,998	19,110,646	222,867,764
October	90,258,767	30,417,486	24,960,892	62,112,445	994,692	16,685,346	225,429,628
November	92,000,250	29,961,835	25,011,597	62,070,354	1,358,019	20,921,832	231,323,887
December	96,540,841	30,459,053	24,610,051	64,441,535	1,359,632	20,994,700	238,405,812
Total	1,090,012,724	358,289,142	289,736,280	717,967,163	13,193,801	196,363,761	2,665,562,871

**FLORIDA MARKETING AREA
FEDERAL ORDER NO. 6**

DISPOSITION ON ROUTES INSIDE THE MARKETING AREA BY NONPOOL PLANTS

2005	WHOLE MILK	FAT FREE MILK	LOW FAT MILK	REDUCED FAT MILK	CULTURED MILK	FLAVORED MILK&DRINKS	TOTAL NONPOOL
January	12,228,165	5,436,605	2,891,808	10,100,358	217,069	3,252,424	34,126,429
February	10,449,439	5,048,288	2,653,416	9,100,973	145,461	3,275,877	30,673,454
March	12,325,874	5,616,876	2,938,783	10,570,200	154,661	3,738,968	35,345,362
April	11,560,110	5,499,841	2,802,782	10,105,865	151,272	3,405,647	33,525,517
May	11,516,177	5,145,502	2,763,869	9,473,359	160,705	3,724,928	32,784,540
June	11,485,185	4,962,536	2,692,315	9,515,317	133,879	3,298,955	32,088,187
July	10,980,918	4,903,654	2,797,472	10,552,330	116,024	3,099,691	32,450,089
August	7,867,852	4,457,236	2,377,930	10,148,964	200,017	3,290,312	28,342,311
September	7,508,337	4,126,254	2,281,819	9,748,182	281,256	3,284,366	27,230,214
October	7,599,670	3,963,594	2,217,985	8,728,139	162,934	3,416,789	26,089,111
November	7,369,636	3,987,259	2,043,193	8,586,814	216,919	3,306,013	25,509,834
December	7,413,744	4,169,269	1,990,924	8,660,548	212,955	3,335,831	25,783,271
Total	118,305,107	57,316,914	30,452,296	115,291,049	2,153,152	40,429,801	363,948,319

DISPOSITION ON ROUTES INSIDE THE MARKETING AREA BY POOL PLANTS

2005	WHOLE MILK	FAT FREE MILK	LOW FAT MILK	REDUCED FAT MILK	CULTURED MILK	FLAVORED MILK&DRINKS	TOTAL POOL
January	93,575,632	32,613,660	26,264,152	60,033,603	1,142,835	16,389,985	230,019,867
February	83,892,023	30,079,358	23,333,112	54,603,317	1,097,228	16,579,178	209,584,216
March	92,722,093	32,827,114	25,708,810	60,888,507	1,143,447	16,743,133	230,033,104
April	88,937,530	29,852,060	24,257,533	57,254,081	1,005,568	18,273,335	219,580,107
May	87,520,446	28,154,193	22,930,276	54,642,923	950,454	16,198,724	210,397,016
June	85,250,023	26,369,997	21,214,984	55,270,536	892,127	8,294,627	197,292,294
July	87,611,190	27,389,914	21,564,281	57,662,937	910,090	8,026,230	203,164,642
August	92,286,691	29,662,950	24,778,465	62,737,889	902,689	17,865,906	228,234,590
September	87,787,713	28,309,771	23,964,744	59,941,545	908,215	19,056,343	219,968,331
October	85,745,222	29,544,927	24,256,105	59,590,407	922,213	16,601,639	216,660,513
November	87,438,939	29,110,879	24,324,641	59,589,274	1,236,805	20,231,607	221,932,145
December	92,007,018	29,631,731	23,906,165	62,044,134	1,250,693	20,610,584	229,450,325
Total	1,064,774,520	353,546,554	286,503,268	704,259,153	12,362,364	194,871,291	2,616,317,150

TOTAL DISPOSITION ON ROUTES INSIDE THE MARKETING AREA

2005	WHOLE MILK	FAT FREE MILK	LOW FAT MILK	REDUCED FAT MILK	CULTURED MILK	FLAVORED MILK&DRINKS	TOTAL SALES
January	105,803,797	38,050,265	29,155,960	70,133,961	1,359,904	19,642,409	264,146,296
February	94,341,462	35,127,646	25,986,528	63,704,290	1,242,689	19,855,055	240,257,670
March	105,047,967	38,443,990	28,647,593	71,458,707	1,298,108	20,482,101	265,378,466
April	100,497,640	35,351,901	27,060,315	67,359,946	1,156,840	21,678,982	253,105,624
May	99,036,623	33,299,695	25,694,145	64,116,282	1,111,159	19,923,652	243,181,556
June	96,735,208	31,332,533	23,907,299	64,785,853	1,026,006	11,593,582	229,380,481
July	98,592,108	32,293,568	24,361,753	68,215,267	1,026,114	11,125,921	235,614,731
August	100,154,543	34,120,186	27,156,395	72,886,853	1,102,706	21,156,218	256,576,901
September	95,296,050	32,436,025	26,246,563	69,689,727	1,189,471	22,340,709	247,198,545
October	93,344,892	33,508,521	26,474,090	68,318,546	1,085,147	20,018,428	242,749,624
November	94,808,575	33,098,138	26,367,834	68,176,088	1,453,724	23,537,620	247,441,979
December	99,420,762	33,801,000	25,897,089	70,704,682	1,463,648	23,946,415	255,233,596
Total	1,183,079,627	410,863,468	316,955,564	819,550,202	14,515,516	235,301,092	2,980,265,469

FLORIDA MARKETING AREA
FEDERAL ORDER NO. 6

TOTAL CLASS II UTILIZATION BY POOL HANDLERS

2005	NONFLUID USED TO PRODUCE	SHRINKAGE	TRANSFERRED OR DIVERTED TO NONPOOL PLANTS	USED TO PRODUCE/ OTHER USES
January	8,270,767	0	5,246,674	15,220,010
February	8,993,928	0	5,263,902	15,069,790
March	10,198,893	0	6,422,235	15,405,015
April	10,113,310	0	6,856,068	14,301,249
May	9,213,567	0	6,443,859	14,190,370
June	8,906,488	0	6,410,867	13,937,303
July	9,375,189	0	6,337,019	12,647,288
August	10,579,198	0	7,149,503	14,683,380
September	9,133,837	0	7,170,520	12,856,060
October	7,813,430	0	8,080,451	11,985,762
November	8,675,391	0	5,389,439	14,942,757
December	8,158,234	0	5,401,187	14,308,795
Total	109,432,232	0	76,171,724	169,547,779

TOTAL CLASS II UTILIZATION

2005	PRODUCT POUNDS	BUTTERFAT POUNDS	BUTTERFAT TEST	DAILY UTILIZATION
January	28,737,451	3,246,751	11.30%	927,015
February	29,327,620	3,355,479	11.44%	1,047,415
March	32,026,143	3,401,424	10.62%	1,033,101
April	31,270,627	3,613,834	11.56%	1,042,354
May	29,847,796	3,439,207	11.52%	962,832
June	29,254,658	3,364,002	11.50%	975,155
July	28,359,496	3,222,578	11.36%	914,822
August	32,412,081	3,745,724	11.56%	1,045,551
September	29,160,417	3,289,295	11.28%	972,014
October	27,879,643	3,253,623	11.67%	899,343
November	29,007,587	3,370,759	11.62%	966,920
December	27,868,216	2,915,620	10.46%	898,975
Total	355,151,735	40,218,296	11.32%	973,018

**FLORIDA MARKETING AREA
FEDERAL ORDER NO. 6**

TOTAL CLASS III UTILIZATION BY POOL HANDLERS

2005	<u>SHRINKAGE 1/</u>	<u>TRANSFERRED OR DIVERTED TO NONPOOL PLANTS & USED TO PRODUCE</u>	<u>OTHER USES 2/</u>
January	0	9,356,239	0
February	0	25,917,229	0
March	0	34,402,050	0
April	0	32,445,544	0
May	0	42,411,104	0
June	0	30,017,848	0
July	0	14,708,261	0
August	0	920,230	0
September	0	1,318,418	0
October	0	940,883	0
November	0	836,093	0
December	0	2,993,533	0
Total	0	196,267,432	0

TOTAL CLASS III UTILIZATION

2005	<u>PRODUCT POUNDS</u>	<u>BUTTERFAT POUNDS</u>	<u>BUTTERFAT TEST</u>	<u>DAILY AVERAGE UTILIZATION</u>
January	9,356,239	437,724	4.68%	301,814
February	25,917,229	315,038	1.22%	925,615
March	34,402,050	464,172	1.35%	1,109,744
April	32,445,544	426,178	1.31%	1,081,518
May	42,411,104	650,914	1.53%	1,368,100
June	30,017,848	324,462	1.08%	1,000,595
July	14,708,261	138,527	0.94%	474,460
August	920,230	91,626	9.96%	29,685
September	1,318,418	66,718	5.06%	43,947
October	940,883	192,353	20.44%	30,351
November	836,093	127,367	15.23%	27,870
December	2,993,533	106,129	3.55%	96,566
Total	196,267,432	3,341,208	1.70%	537,719

1/ Pursuant § 1000.43 (b) (1). Assigned to lowest priced class.

2/ Pursuant § 1000.40 (e). Other Uses assigned to lowest priced class.

**FLORIDA MARKETING AREA
FEDERAL ORDER NO. 6**

TOTAL CLASS IV UTILIZATION BY POOL HANDLERS

2005	<u>ENDING INVENTORY</u>	<u>NONFLUID USED TO FORTIFY</u>	<u>SHRINKAGE 1/</u>	<u>TRANSFERRED OR DIVERTED TO NONPOOL PLANTS</u>	<u>USED TO PRODUCE/ OTHER USES 2/</u>
January	7,870,039	1,649,401	4,025,563	4,483,034	1,306,944
February	5,744,303	1,610,659	4,021,116	6,510,043	1,120,524
March	7,086,750	1,633,452	3,902,147	6,368,796	1,145,870
April	3,625,435	1,635,879	3,415,324	6,251,164	1,133,144
May	7,377,555	1,318,002	3,571,411	5,195,320	1,158,606
June	7,395,556	1,170,347	3,469,312	5,519,675	1,298,477
July	9,181,520	1,271,992	3,987,142	5,359,729	1,302,464
August	8,974,576	1,752,575	3,352,983	6,764,558	1,319,658
September	5,050,783	1,734,870	3,831,190	6,389,153	1,275,393
October	7,399,850	1,759,012	3,497,567	5,167,077	1,284,700
November	8,303,468	3,934,134	3,935,414	5,257,678	1,557,870
December	4,635,269	4,525,840	3,519,780	6,292,611	2,805,642
Total	82,645,104	23,996,163	44,528,949	69,558,838	16,709,292

TOTAL CLASS IV UTILIZATION

2005	<u>PRODUCT POUNDS</u>	<u>BUTTERFAT POUNDS</u>	<u>BUTTERFAT TEST</u>	<u>DAILY UTILIZATION</u>
January	19,334,981	1,855,515	9.60%	623,709
February	19,006,645	2,059,712	10.84%	678,809
March	20,137,015	2,468,781	12.26%	649,581
April	16,060,946	1,926,436	11.99%	535,365
May	18,620,894	1,966,762	10.56%	600,674
June	18,853,367	1,579,967	8.38%	628,446
July	21,102,847	1,507,153	7.14%	680,737
August	22,164,350	1,326,073	5.98%	714,979
September	18,281,389	1,507,594	8.25%	609,380
October	19,108,206	1,540,669	8.06%	616,394
November	22,988,564	1,641,259	7.14%	766,285
December	21,779,142	2,098,107	9.63%	702,553
Total	237,438,346	21,478,028	9.05%	650,516

1/ Pursuant § 1000.43 (b) (1). Shrinkage assigned to lowest priced class.

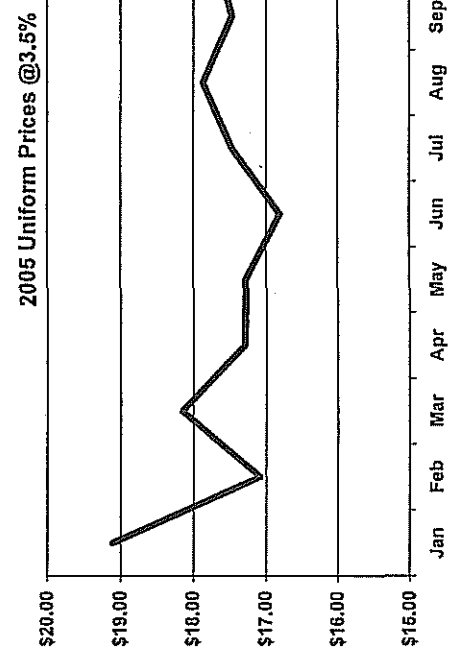
2/ Pursuant § 1000.40 (d) and (e). Used to Produce, Bulk Ending Inventory & NFMP-UTF assigned to Class IV. Other Uses assigned to lowest priced class.

**FLORIDA MARKETING AREA
FEDERAL ORDER NO. 6
ANNOUNCED FEDERAL ORDER CLASS & UNIFORM PRICES**

CLASS I*		CLASS II	
	Skim	Butterfat	Milk @ 3.5%
2005			
January	\$13.70	\$2.1218	\$1.7400
February	\$11.97	\$2.1218	\$1.7824
March	\$13.59	\$1.8058	\$1.7349
April	\$12.35	\$1.7759	\$1.7034
May	\$13.14	\$1.7492	\$1.5545
June	\$12.58	\$1.5666	\$1.6002
July	\$12.73	\$1.6010	\$1.8077
August	\$12.29	\$1.8796	\$1.8316
September	\$11.71	\$1.8272	\$1.8942
October	\$11.96	\$1.9218	\$1.8326
November	\$12.48	\$1.8626	\$1.6184
December	\$12.03	\$1.7033	\$1.5106
Average	\$12.54	\$1.7999	\$1.7175
		Skim	Milk @ 3.5%
2005			
January		\$7.20	\$13.04
February		\$7.38	\$13.36
March		\$7.44	\$13.25
April		\$7.54	\$13.24
May		\$7.61	\$12.78
June		\$7.73	\$13.06
July		\$7.73	\$13.79
August		\$7.81	\$13.95
September		\$8.00	\$14.35
October		\$8.12	\$14.25
November		\$8.11	\$13.49
December		\$8.22	\$13.22
Average		\$7.74	\$13.48

CLASS III		CLASS IV	
	Skim	Butterfat	Milk @ 3.5%
2005			
January	\$8.37	\$1.7330	\$12.52
February	\$8.79	\$1.7754	\$12.74
March	\$8.32	\$1.7279	\$12.66
April	\$8.99	\$1.6964	\$12.61
May	\$8.66	\$1.5475	\$12.20
June	\$8.65	\$1.5932	\$12.33
July	\$8.34	\$1.8007	\$13.17
August	\$7.48	\$1.8246	\$13.44
September	\$7.97	\$1.8872	\$13.75
October	\$8.25	\$1.8256	\$13.61
November	\$7.99	\$1.6114	\$12.90
December	\$8.40	\$1.5036	\$12.57
Average	\$8.35	\$1.7105	\$12.87
		Skim	Milk @ 3.5%
2005			
January		\$6.69	\$12.52
February		\$6.76	\$12.74
March		\$6.85	\$12.66
April		\$6.91	\$12.61
May		\$7.03	\$12.20
June		\$7.00	\$12.33
July		\$7.12	\$13.17
August		\$7.31	\$13.44
September		\$7.40	\$13.75
October		\$7.48	\$13.61
November		\$7.52	\$12.90
December		\$7.57	\$12.57
Average		\$7.14	\$12.87

UNIFORM*	
	Skim
2005	
January	\$12.81
February	\$11.24
March	\$12.40
April	\$11.63
May	\$11.95
June	\$11.67
July	\$11.92
August	\$11.78
September	\$11.36
October	\$11.52
November	\$12.01
December	\$11.65
Average	\$11.83



* Class 1 and Uniform Prices are at Hillsborough County (Tampa), Florida

**FLORIDA MARKETING AREA
FEDERAL ORDER NO. 6**

**NASS DAIRY PRODUCT PRICE AVERAGES USED IN
FEDERAL MILK ORDER PRICE FORMULAS**

Class I (Skim, Bfat), Class II (Skim, Nonfat Solids)

2005	<u>Weeks Ending</u>	<u>Butter</u>	<u>Nonfat Dry Milk</u>	<u>Cheese</u>	<u>Dry Whey</u>
Dollars per pound					
January	12/11,18	1.8498	0.8698	1.7648	0.2436
February	1/8,15	1.5682	0.8892	1.4790	0.2481
March	2/5,12	1.5865	0.8964	1.6482	0.2479
April	3/5,12	1.5616	0.9073	1.5140	0.2485
May	4/9,16	1.5393	0.9159	1.5777	0.2596
June	5/7,14	1.3872	0.9287	1.4612	0.2597
July	6/4,11	1.4158	0.9289	1.4827	0.2684
August	7/9,16	1.6480	0.9377	1.5224	0.2796
September	8/6,13	1.6043	0.9594	1.4449	0.2843
October	9/10,17	1.6832	0.9726	1.4965	0.2904
November	10/8,15	1.6338	0.9719	1.5205	0.3055
December	11/5,12	1.5011	0.9834	1.4213	0.3084

Class II (Bfat), Class III, Class IV, Components

2005	<u>Weeks Ending</u>	<u>Butter</u>	<u>Nonfat Dry Milk</u>	<u>Cheese</u>	<u>Dry Whey</u>
Dollars per pound					
January	1/1,8,15,22,29	1.5592	0.8906	1.5165	0.2463
February	2/5,12,19,26	1.5945	0.8990	1.5711	0.2478
March	3/5,12,19,26	1.5549	0.9083	1.5061	0.2513
April	4/2,9,16,23	1.5287	0.9156	1.5590	0.2580
May	4/30,5/7,14,21,28	1.4046	0.9289	1.4765	0.2603
June	6/4,11,18,25	1.4427	0.9259	1.4845	0.2696
July	7/2,9,16,23,30	1.6156	0.9389	1.5156	0.2794
August	8/6,13,20,27	1.6355	0.9601	1.4322	0.2869
September	9/3,10,17,24	1.6877	0.9705	1.4958	0.2960
October	10/1,8,15,22,29	1.6363	0.9794	1.4996	0.3038
November	11/5,12,19,26	1.4578	0.9835	1.3968	0.3149
December	12/3,10,17,24	1.3680	0.9899	1.3964	0.3242

**FLORIDA MARKETING AREA
FEDERAL ORDER NO. 6
2005 POOL HANDLERS**

Fluid Milk Distributing Pool Plants \$1006.7(a)

*

	J	F	M	A	M	J	J	A	S	O	N	D	
Gustafson's, LLC Green Cove Springs, Florida	X	X	X	X	X	X	X	X	X	X	X	X	
Hato Patrero Farms, Inc. Clewiston, FL	X	X	X	X	X	X	X	X	X	X	X	X	
McArthur Dairy, Inc. Miami, Florida	X	X	X	X	X	X	X	X	X	X	X	X	
Morningstar Foods Jacksonville, Florida	X	X	X	Named changed to White Wave Foods									
Publix Supermarkets, Inc. Deerfield Beach, Florida	X	X	X	X	X	X	X	X	X	X	X	X	
Publix Supermarkets, Inc. Lakeland, Florida	X	X	X	X	X	X	X	X	X	X	X	X	
Sunbelt Dairy & Food Company Tampa, Florida	X	X	X	X	X	X	X	X	X	X	X	X	
T.G. Lee Foods, Inc. Orange City, Florida	X	X	X	X	X	X	X	X	X	X	X	X	
T.G. Lee Foods, Inc. Orlando, Florida	X	X	X	X	X	X	X	X	X	X	X	X	
Velda Farms, LLC Miami, Florida	X	X	X	X	X	X	X	X	X	X	X	X	
Velda Farms, LLC Winter Haven, Florida	X	X	X	X	X	X	X	X	X	X	X	X	
White Wave Foods Jacksonville, Florida				Named changed from Morningstar Foods								X	X
Winn-Dixie Trust Stores Greenville, South Carolina								X	X	Plant Closed			
Winn-Dixie Stores, Inc. Plant City, Florida	X	Name changed to Winn-Dixie Trust Stores											
Winn-Dixie Trust Stores, Inc. Plant City, Florida		X	X	X	X	X	X	X	X	X	X	X	

**FLORIDA MARKETING AREA
FEDERAL ORDER NO. 6
2005 POOL HANDLERS**

Cooperatives Qualifying as Pool Handlers §1006.9(c)

	J	F	M	A	M	J	J	A	S	O	N	D
Dairy Farmers of America, Inc. Kansas City, Missouri	X	X	X	X	X	X	X	X	X	X	X	X
Land-O-Lakes Mt. Holly Springs, PA								X	X			
Lone Star Milk Producers, Inc. Windthorst, Texas							X	X	X	X	X	X
Maryland/Virginia Milk Producers Reston, Virginia	X	X	X	X	X	X	X	X	X	X	X	X
Select Milk Producers Artesia, New Mexico			X	X		X		X	X	X	X	X
Southeast Milk, Inc. Bellevue, Florida	X	X	X	X	X	X	X	X	X	X	X	X
White Eagle Cooperative Assoc. South Bend, IN								X				

**FLORIDA MARKETING AREA
FEDERAL ORDER NO. 6
NONPOOL PLANTS WITH ROUTE DISPOSITION IN THE AREA - 2004**

J	F	M	A	M	J	J	A	S	O	N	D
---	---	---	---	---	---	---	---	---	---	---	---

Other Order Plants §1000.8(a)

Federal Order #1

H. P. Hood, Inc.
Oneida, New York

X	X	X	X	X	X	X	X	X	X	X	X
---	---	---	---	---	---	---	---	---	---	---	---

H. P. Hood, Inc.
Winchester, Virginia

X	X	X	X	X	X	X	X	X	X	X	X
---	---	---	---	---	---	---	---	---	---	---	---

Morningstar Foods / Ultra
Fraser, New York

X	X	X									
---	---	---	--	--	--	--	--	--	--	--	--

Morningstar Foods
Mount Crawford, Virginia

X	X	X	X	X	X	X	X	X	X	Changed to FO 5	
---	---	---	---	---	---	---	---	---	---	--------------------	--

Stueben Foods
Elma, New York

X	X	X	X	X	X	X	X	X	X	X	X
---	---	---	---	---	---	---	---	---	---	---	---

Federal Order #5

Milkco Inc.
Asheville, North Carolina

X	X	X	X	X	X	X	X	X	X	X	X
---	---	---	---	---	---	---	---	---	---	---	---

Morningstar Foods
Mount Crawford, Virginia

						Changed from FO 1			X	X
--	--	--	--	--	--	-------------------	--	--	---	---

Regis Milk Company
Charleston, South Carolina

X	X	X	X	X	X	X	X	X	X	X	X
---	---	---	---	---	---	---	---	---	---	---	---

Winn-Dixie Stores, Inc.
Greenville, South Carolina

X	Name changed to Winn Dixie Trust Stores										
---	---	--	--	--	--	--	--	--	--	--	--

Winn-Dixie Stores, Inc.
High Point, North Carolina

X	Name changed to Winn Dixie Trust Stores										
---	---	--	--	--	--	--	--	--	--	--	--

Winn-Dixie Trust Stores
Greenville, South Carolina

	X	X	X	X	X	X				Plant Closed	
--	---	---	---	---	---	---	--	--	--	--------------	--

Winn-Dixie Trust Stores
High Point, North Carolina

	X	X	X	X	X	X			Plant Closed		
--	---	---	---	---	---	---	--	--	--------------	--	--

Federal Order #7

Barber Pure Milk Company
Birmingham, Alabama

X	X	X	X	X	X	X	X	X	X	X	X
---	---	---	---	---	---	---	---	---	---	---	---

Country Delite Farms
Nashville, Tennessee

X	X	X	X	X	X	X	X	X	X	X	X
---	---	---	---	---	---	---	---	---	---	---	---

**FLORIDA MARKETING AREA
FEDERAL ORDER NO. 6
NONPOOL PLANTS WITH ROUTE DISPOSITION IN THE AREA - 2004**

	J	F	M	A	M	J	J	A	S	O	N	D
Dairy Fresh of Alabama, LLC Cowarts, Alabama	X	X	X	X	X	X	X	X	X	X	X	X
Flagship Atlanta Dairy, LLC Atlanta, Georgia	Name changed from New Atlanta Dairy Trust				X	X	X	X	X	X	X	
Morningstar Foods/ dba Milk Products Decatur, Alabama	X	X	X	X	X	X	X	X	X	X	X	X
Morningstar Foods Murray, Kentucky	X	X	X	X	X	X	X	X	X	X	X	X
New Atlanta Trust Dairy Atlanta, Georgia	X	X	X	X	X	Name changed to Flagship Atlanta Dairy						
PublixSupermarkets, Inc. Atlanta, Georgia	X	X	X	X	X	X	X	X	X	X	X	X
Turner Holdings LLC/Coleman Dairy Little Rock, Arkansas	X	X	X	X	X	X	X	X	X	X	X	X
Winn-Dixie Stores, Inc. Hammond, Louisiana	X	Name changed to Winn-Dixie Trust Stores										
Winn-Dixie Stores, Inc. Montgomery, Alabama	X	Name changed to Winn-Dixie Trust Stores										
Winn-Dixie Trust Stores, Inc. Hammond, Louisiana				X	X							
Winn-Dixie Trust Stores, Inc. Montgomery, Alabama		X	X	X	X	X	X	X		Plant Closed		

Federal Order #30

Lifeway Foods, Inc. Morton Grove, Illinois	X	X	X	X	X	X	X	X	X	X	X	X
Pride of Main Street Dairy, LLC Sauk Centre, Minnesota	X	X	X	X	X	X	X	X	X	X	X	X
Schroeder Milk Company, Inc. Maplewood, Minnesota							X	X	X	X	X	X

Federal Order #32

Farmers All Natural Creamery Wellman, Iowa							X	X				
---	--	--	--	--	--	--	---	---	--	--	--	--

**FLORIDA MARKETING AREA
FEDERAL ORDER NO. 6
NONPOOL PLANTS WITH ROUTE DISPOSITION IN THE AREA - 2004**

	J	F	M	A	M	J	J	A	S	O	N	D
Federal Order #33												
Marburger Farm Dairy Evans City, Pennsylvania								X	X	X	X	X
Parmalat-White Knight Packaging Wyoming, Michigan	X	X	X	X	X	X	X	X	X	X	X	X

Federal Order #126												
Morningstar Foods Suphur Springs, Texas	X	X	X	X	X	X	X	X	X	X	X	X
Promised Land Dairy Floresville, Texas	X	X	X	X	X	X	X	X	X	X	X	X

Federal Order #131												
Shamrock Foods Company Phoenix, Arizona							X	X	X	X	X	X

Exempt Distributing Plants §1000.8(e)

Golden Fleece Lecanto, Florida	X	X	X	X	X	X	X	X	X	X	X	X
Kurtz & Sons Dairy Live Oak, Florida	X	X	X	X	X	X	X	X	X	X	X	X
M & B Dairy Products Tampa, Florida	X	X	X	X	X	X	X	X	X	X	X	X

Partially Regulated Distributing Plants §1000.8(c)

Alfa Dena Dairy City of Industry, California	X	X	X	X	X	X	X	X	X	X	X	X
Cacique Company City of Industry, California	X	X	X	X	X	X	X	X	X	X	X	X
Dannon Milk Products Fort Worth, Texas	X	X	X	X	X	X	X	X	X	X	X	X
Dannon Milk Products Minster, Ohio									X	X	X	X

**FLORIDA MARKETING AREA
FEDERAL ORDER NO. 6
NONPOOL PLANTS WITH ROUTE DISPOSITION IN THE AREA - 2004**

	J	F	M	A	M	J	J	A	S	O	N	D
Dannon Milk Products West Jordan, Utah	X	X	X	X	X	X	X	X	X	X	X	X
Gossner Foods Logan, Utah	X	X	X	X	X	X	X	X	X	X	X	X
Kohler Mix Specialty White Bear Lake, Minnesota	X	X	X	X	X	X	X	X	X	X	X	X
Lifeway Foods, Inc. Morton Grove, Illinois	X								X			
Jasper Products, LLC Joplin, Missouri	X	X	X	X	X	X	X	X	X	X	X	X
WestFarm Foods, Inc. Fruitland, Idaho									X			
Winn-Dixie Stores, Inc. High Point, North Carolina								X	Plant Closed			

Producer-Handler Plants §1000.8(b)

Aurora Organic Dairy Platteville, Colorado	X	X	X	X	X	X	X	X	X	X	X	X
---	---	---	---	---	---	---	---	---	---	---	---	---

