



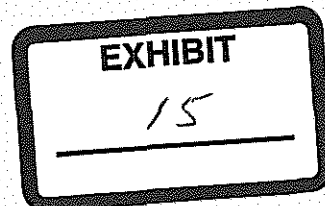
United States Department of Agriculture

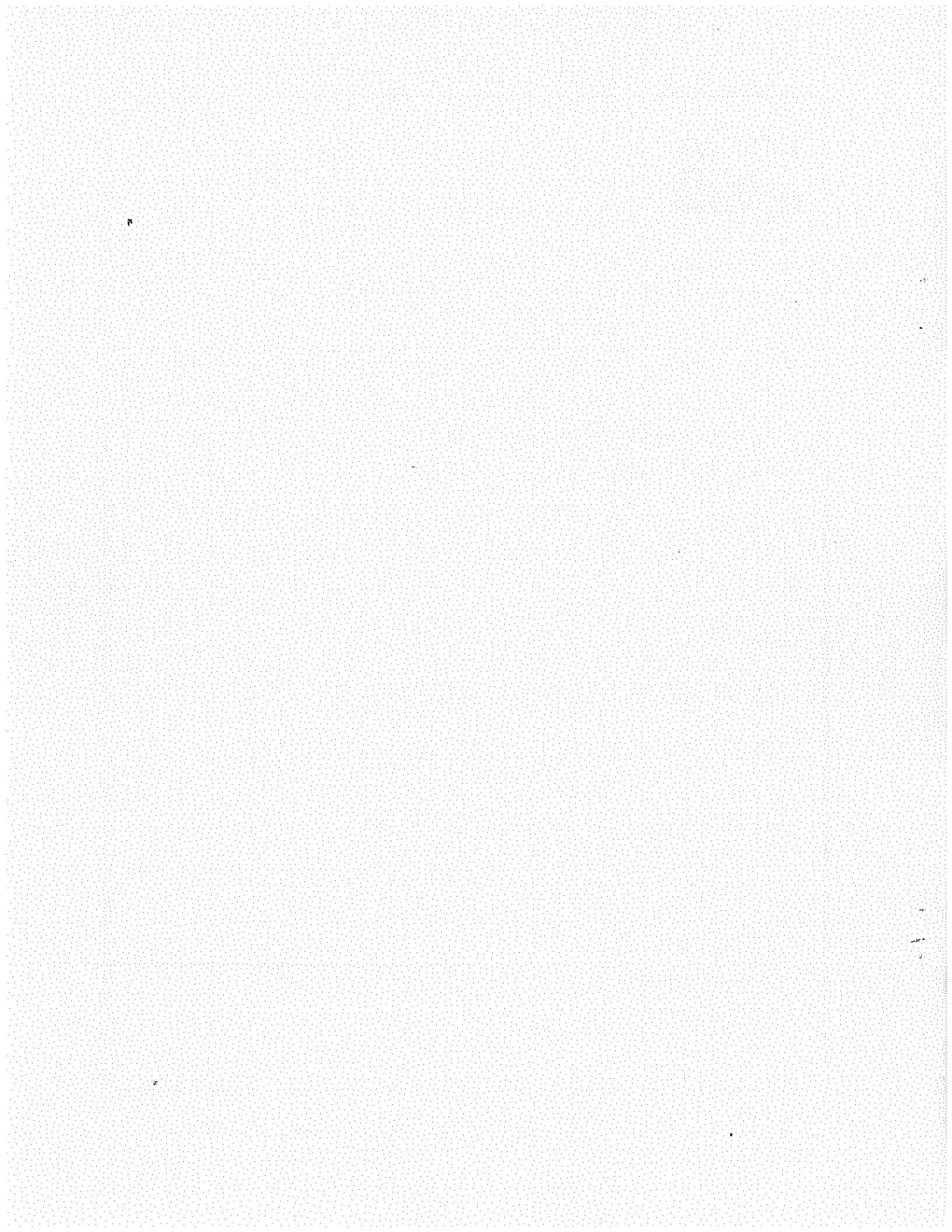
Agricultural Marketing Service - Dairy Programs

**Southeast Marketing Area  
Federal Order No. 7**

**2005 ANNUAL STATISTICS**

*Sue L. Mosley*  
Market Administrator  
P.O. Box 491778  
Lawrenceville, Georgia 30049





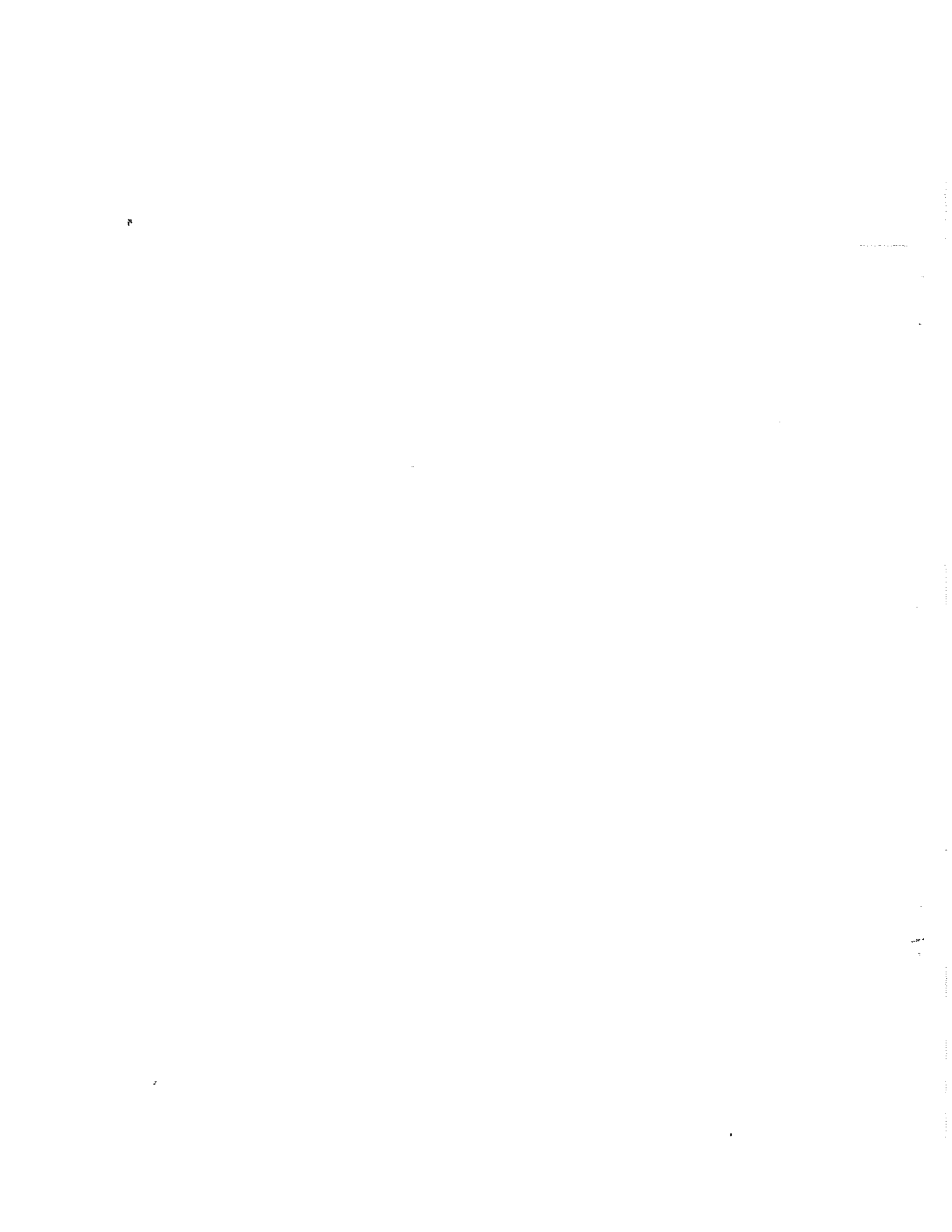
## TABLE OF CONTENTS

Southeast Marketing Area Map .....	1
Receipts and Classification of Producer Milk .....	2
* Receipts and Classification of Other Source Milk, Overages, and Opening Inventories .....	3
Classification of Total Receipts .....	4
Class I Utilization by Pool Handlers .....	5
Total Class I Route Disposition by Pool Plants .....	6
Total Class I Route Disposition Inside the Marketing Area .....	7
Class II Utilization by Pool Handlers .....	8
Class III Utilization by Pool Handlers .....	9
Class IV Utilization by Pool Handlers .....	10
Announced Federal Order Class and Uniform Prices .....	11
NASS Dairy Product Price Averages Used In Federal Milk Order Price Formulas .....	12
Producer Milk and Number of Producers by State and County - May 2005 .....	13
Producer Milk and Number of Producers by State and County - December 2005.....	19
Transportation Credit Balancing Fund Summary.....	26
Pool Handlers .....	27
Nonpool Handlers with Route Disposition in the Marketing Area .....	30

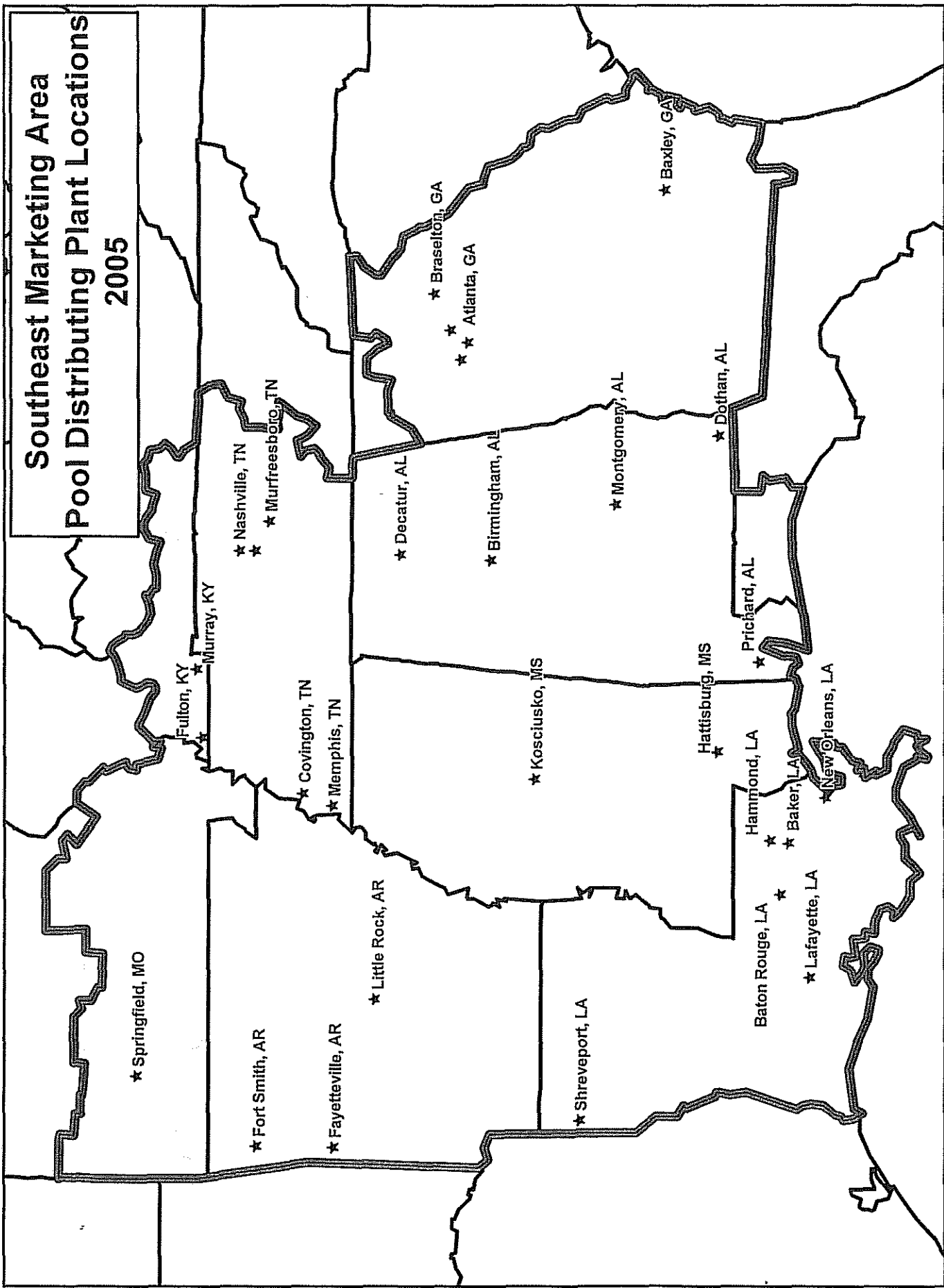
The data presented herein represents a compilation of general information pertaining to the marketing of milk in the Southeast Marketing Area during 2005. Except for the corrections of mathematical and other obvious errors, the data presented were taken from reports of receipts and utilization, payroll reports, and reports of nonpool handlers that were submitted to the office of the Market Administrator as well as publications released by this office.

This information is prepared pursuant to Section §1000.25 (c)(8) of the General Provisions of Federal Milk Marketing Orders, Part 1000 which is incorporated by reference and made a part of Federal Order Number 7. Part 1000 states that the Market Administrator shall "Prepare and disseminate publicly for the benefit of producers, handlers, and consumers such statistics and other information concerning operation of the order and facts relevant to the provisions thereof (or proposed provisions) as do not reveal confidential information."

"The U.S. Department of Agriculture (USDA) prohibits discrimination in all its programs and activities on the basis of race, color, national origin, age, disability, and where applicable, sex, marital status, familial status, parental status, religion, sexual orientation, genetic information, political beliefs, reprisal, or because all or a part of an individual's income is derived from any public assistance program. (Not all prohibited bases apply to all programs.) Persons with disabilities who require alternative means for communication of program information (Braille, large print, audiotape, etc.) should contact USDA's TARGET Center at (202) 720-2600 (voice and TDD). To file a complaint of discrimination write to USDA, Director, Office of Civil Rights, 1400 Independence Avenue, S.W., Washington, D.C. 20250-9410 or call (800) 795-3272 (voice) or (202) 720-6382 (TDD). USDA is an equal opportunity provider and employer."



# Southeast Marketing Area Pool Distributing Plant Locations 2005



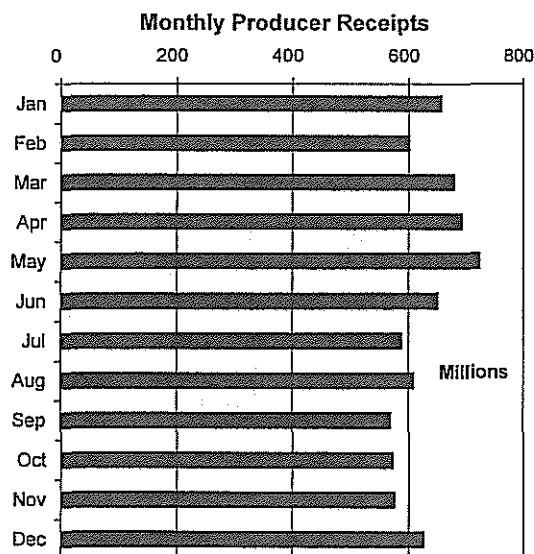
**SOUTHEAST MARKETING AREA  
FEDERAL ORDER NO. 7**

**RECEIPTS AND CLASSIFICATION OF PRODUCER MILK AND BUTTERFAT**

2005	CLASS I			CLASS II		
	PRODUCT POUNDS	%	BUTTERFAT POUNDS	PRODUCT POUNDS	%	BUTTERFAT POUNDS
January	405,635,878	61.83	8,411,228	66,595,110	10.15	4,684,837
February	367,200,689	61.00	7,620,105	76,104,939	12.65	4,812,155
March	402,239,337	59.28	8,409,453	86,688,478	12.78	5,994,053
April	391,109,553	56.55	8,137,116	86,015,540	12.43	5,546,027
May	380,246,777	52.55	7,967,232	95,120,459	13.15	6,294,004
June	361,047,722	55.55	7,909,827	84,266,661	12.96	6,189,453
July	363,020,061	61.71	7,974,605	72,114,316	12.26	5,592,926
August	406,022,498	66.69	8,508,953	69,260,073	11.37	5,913,254
September	397,642,652	69.87	8,343,748	59,669,541	10.48	4,854,772
October	390,959,356	68.28	8,156,371	56,932,699	9.94	5,017,444
November	388,326,096	67.42	8,548,506	53,895,777	9.36	4,674,952
December	400,937,464	63.95	9,067,929	56,187,921	8.96	4,739,778
<b>Total</b>	<b>4,654,388,083</b>	<b>61.70%</b>	<b>99,055,073</b>	<b>862,851,514</b>	<b>11.44%</b>	<b>64,313,655</b>

2005	CLASS III			CLASS IV		
	PRODUCT POUNDS	%	BUTTERFAT POUNDS	PRODUCT POUNDS	%	BUTTERFAT POUNDS
January	83,291,186	12.70	3,790,187	100,479,207	15.32	7,511,567
February	60,457,961	10.05	2,518,525	98,085,945	16.30	7,210,024
March	91,864,478	13.54	3,862,989	97,723,164	14.40	6,338,550
April	102,043,568	14.75	4,049,144	112,559,299	16.27	6,897,366
May	123,726,082	17.10	4,634,474	124,492,070	17.20	6,590,005
June	109,175,202	16.79	4,002,387	95,586,749	14.70	4,721,047
July	81,909,652	13.92	3,456,358	71,263,464	12.11	3,678,281
August	69,486,704	11.41	3,099,771	64,137,796	10.53	3,961,655
September	69,181,624	12.15	2,983,870	42,700,598	7.50	4,303,617
October	70,187,565	12.26	3,075,049	54,479,479	9.52	4,853,294
November	72,632,574	12.61	3,302,529	61,130,832	10.61	5,314,981
December	90,048,812	14.36	3,892,017	79,833,598	12.73	6,491,813
<b>Total</b>	<b>1,024,005,408</b>	<b>13.57%</b>	<b>42,667,300</b>	<b>1,002,472,201</b>	<b>13.29%</b>	<b>67,872,200</b>

2005	TOTAL PRODUCER RECEIPTS		
	PRODUCT POUNDS	%	BUTTERFAT POUNDS
January	656,001,381	100.00	24,397,819
February	601,849,534	100.00	22,160,809
March	678,515,457	100.00	24,605,045
April	691,727,960	100.00	24,629,653
May	723,585,388	100.00	25,485,715
June	650,076,334	100.00	22,822,714
July	588,307,493	100.00	20,702,170
August	608,907,071	100.00	21,483,633
September	569,194,415	100.00	20,486,007
October	572,559,099	100.00	21,102,158
November	575,985,279	100.00	21,840,968
December	627,007,795	100.00	24,191,537
<b>Total</b>	<b>7,543,717,206</b>	<b>100.00%</b>	<b>273,908,228</b>



**SOUTHEAST MARKETING AREA  
FEDERAL ORDER NO. 7**

**RECEIPTS AND CLASSIFICATION OF OTHER SOURCE MILK,  
OVERAGES, AND OPENING INVENTORIES**

2005	<u>OTHER SOURCE MILK</u>	<u>OVERAGES</u>	<u>OPENING INVENTORIES</u>	<u>TOTAL</u>
January	21,868,293	91,923	46,808,947	68,769,163
February	19,440,626	5,857	52,679,211	72,125,694
March	32,591,014	139,089	53,001,966	85,732,069
April	36,977,918	32,248	50,913,625	87,923,791
May	39,395,528	31,372	47,562,353	86,989,253
June	30,274,310	29,088	46,522,516	76,825,914
July	25,103,561	60,404	48,072,651	73,236,616
August	37,519,790	230,626	51,966,611	89,717,027
September	32,101,324	247,090	48,748,902	81,097,316
October	36,496,084	0	42,893,036	79,389,120
November	40,733,556	117,336	52,057,208	92,908,100
December	30,817,921	25	53,891,036	84,708,982
<b>Total</b>	<b>383,319,925</b>	<b>985,058</b>	<b>595,118,062</b>	<b>979,423,045</b>

**AS CLASSIFIED**

2005	<u>CLASS I</u>	<u>CLASS II</u>	<u>CLASS III</u>	<u>CLASS IV</u>
January	41,795,357	6,241,667	2,463,740	18,268,399
February	35,546,051	7,297,564	2,011,183	27,270,896
March	36,615,602	11,911,392	5,561,405	31,643,670
April	38,785,283	8,677,630	11,842,684	28,618,194
May	36,669,894	8,715,882	10,993,857	30,609,620
June	34,260,351	10,739,190	8,839,691	22,986,682
July	35,219,606	10,581,830	3,374,902	24,060,278
August	38,158,424	14,138,412	5,577,208	31,842,983
September	42,028,402	14,505,013	3,032,963	21,530,938
October	46,967,852	9,738,249	4,000,640	18,682,379
November	45,571,685	10,363,758	4,783,369	32,189,288
December	40,504,405	11,477,245	3,975,602	28,751,730
<b>Total</b>	<b>472,122,912</b>	<b>124,387,832</b>	<b>66,457,244</b>	<b>316,455,057</b>

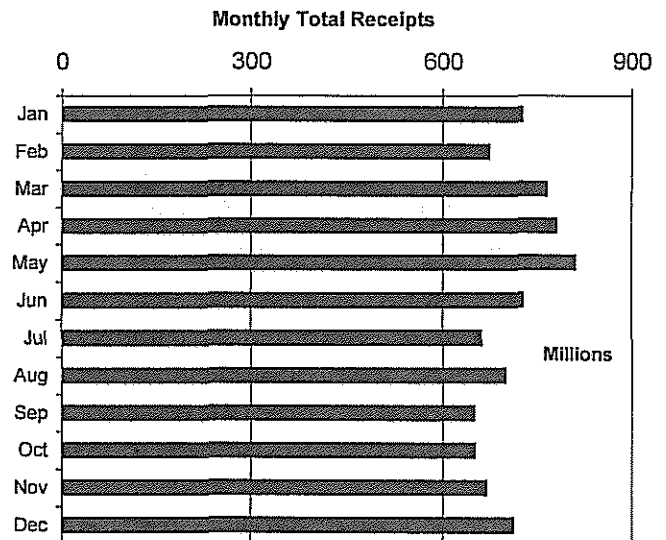
**SOUTHEAST MARKETING AREA  
FEDERAL ORDER NO. 7**

**CLASSIFICATION OF TOTAL RECEIPTS**

2005	CLASS I			CLASS II		
	PRODUCT POUNDS	BUTTERFAT POUNDS	BUTTERFAT TEST	PRODUCT POUNDS	BUTTERFAT POUNDS	BUTTERFAT TEST
January	447,431,235	9,288,210	2.08%	72,836,777	5,120,233	7.03%
February	402,746,740	8,360,235	2.08%	83,402,503	5,540,074	6.64%
March	438,854,939	9,158,606	2.09%	98,599,870	7,213,669	7.32%
April	429,894,836	8,950,387	2.08%	94,693,170	6,398,887	6.76%
May	416,916,671	8,728,218	2.09%	103,836,341	6,943,887	6.69%
June	395,308,073	8,641,306	2.19%	95,005,851	7,141,949	7.52%
July	398,239,667	8,749,546	2.20%	82,696,146	6,654,569	8.05%
August	444,180,922	9,298,425	2.09%	83,398,485	7,120,411	8.54%
September	439,671,054	9,169,407	2.09%	74,174,554	6,211,216	8.37%
October	437,927,208	9,119,983	2.08%	66,670,948	6,134,549	9.20%
November	433,897,781	9,514,969	2.19%	64,259,535	6,164,018	9.59%
December	441,441,869	9,991,645	2.26%	67,665,166	6,231,157	9.21%
<b>Total</b>	<b>5,126,510,995</b>	<b>108,970,937</b>	<b>2.13%</b>	<b>987,239,346</b>	<b>76,874,619</b>	<b>7.79%</b>

2005	CLASS III			CLASS IV		
	PRODUCT POUNDS	BUTTERFAT POUNDS	BUTTERFAT TEST	PRODUCT POUNDS	BUTTERFAT POUNDS	BUTTERFAT TEST
January	85,754,926	3,888,380	4.53%	118,747,606	8,553,396	7.20%
February	62,469,144	2,598,639	4.16%	125,356,841	8,559,337	6.83%
March	97,425,883	4,063,680	4.17%	129,366,834	7,837,258	6.06%
April	113,886,252	4,465,189	3.92%	141,177,493	8,278,446	5.86%
May	134,719,939	5,033,312	3.74%	155,101,690	8,032,246	5.18%
June	118,014,893	4,305,259	3.65%	118,573,431	5,812,314	4.90%
July	85,284,554	3,576,724	4.19%	95,323,742	4,804,593	5.04%
August	75,063,912	3,333,870	4.44%	95,980,779	5,400,424	5.63%
September	72,214,587	3,129,300	4.33%	64,231,536	5,422,302	8.44%
October	74,188,205	3,244,577	4.37%	73,161,858	6,008,150	8.21%
November	77,415,943	3,475,411	4.49%	93,320,120	7,078,254	7.58%
December	94,024,414	4,038,769	4.30%	108,585,328	7,872,559	7.25%
<b>Total</b>	<b>1,090,462,652</b>	<b>45,153,110</b>	<b>4.14%</b>	<b>1,318,927,258</b>	<b>83,659,279</b>	<b>6.34%</b>

2005	TOTAL RECEIPTS		
	PRODUCT POUNDS	BUTTERFAT POUNDS	BUTTERFAT TEST
January	724,770,544	26,850,219	3.70%
February	673,975,228	25,058,285	3.72%
March	764,247,526	28,273,213	3.70%
April	779,651,751	28,092,909	3.60%
May	810,574,641	28,737,663	3.55%
June	726,902,248	25,900,828	3.56%
July	661,544,109	23,785,432	3.60%
August	698,624,098	25,153,130	3.60%
September	650,291,731	23,932,225	3.68%
October	651,948,219	24,507,259	3.76%
November	668,893,379	26,232,652	3.92%
December	711,716,777	28,134,130	3.95%
<b>Total</b>	<b>8,523,140,251</b>	<b>314,657,945</b>	<b>3.69%</b>





**SOUTHEAST MARKETING AREA  
FEDERAL ORDER NO. 7**

**TOTAL CLASS I UTILIZATION BY POOL HANDLERS**

2005	<u>TOTAL CLASS I ROUTE DISPOSITION</u>	<u>TRANSFERRED OR DIVERTED TO NONPOOL PLANTS</u>	<u>ENDING INVENTORY</u>	<u>CLASS I SHRINKAGE</u>
January	408,011,111	6,692,209	29,780,572	2,947,343
February	362,492,226	6,994,931	29,586,895	3,672,688
March	395,324,628	8,614,515	32,913,910	2,001,886
April	388,365,431	7,260,998	31,569,058	2,699,349
May	378,601,469	6,713,230	29,307,564	2,294,408
June	354,773,174	6,135,156	30,500,082	3,899,661
July	363,515,882	5,363,560	26,779,880	2,580,345
August	405,850,158	7,532,626	26,886,708	3,911,430
September	398,743,148	6,021,030	32,480,681	2,426,195
October	399,874,965	6,430,657	28,917,695	2,703,891
November	392,252,373	8,205,375	30,734,244	2,705,789
December	398,548,003	7,387,785	31,446,220	4,059,861
<b>Total</b>	<b>4,646,352,568</b>	<b>83,352,072</b>	<b>360,903,509</b>	<b>35,902,846</b>

**TOTAL CLASS I UTILIZATION**

2005	<u>PRODUCT POUNDS</u>	<u>BUTTERFAT POUNDS</u>	<u>BUTTERFAT TEST</u>	<u>DAILY AVERAGE UTILIZATION</u>
January	447,431,235	9,288,210	2.08%	14,433,266
February	402,746,740	8,360,235	2.08%	14,383,812
March	438,854,939	9,158,606	2.09%	14,156,611
April	429,894,836	8,950,387	2.08%	14,329,828
May	416,916,671	8,728,218	2.09%	13,448,925
June	395,308,073	8,641,306	2.19%	13,176,936
July	398,239,667	8,749,546	2.20%	12,846,441
August	444,180,922	9,298,425	2.09%	14,328,417
September	439,671,054	9,169,407	2.09%	14,655,702
October	437,927,208	9,119,983	2.08%	14,126,684
November	433,897,781	9,514,969	2.19%	14,463,259
December	441,441,869	9,991,645	2.26%	14,240,060
<b>Total</b>	<b>5,126,510,995</b>	<b>108,970,937</b>	<b>2.13%</b>	<b>14,045,236</b>

**SOUTHEAST MARKETING AREA  
FEDERAL ORDER NO. 7**

**TOTAL DISPOSITION ON ROUTES INSIDE THE MARKETING AREA BY POOL PLANTS**

2005	WHOLE MILK	FAT FREE MILK	LOW FAT MILK	REDUCED FAT MILK	CULTURED MILK	FLAVORED MILK&DRINKS	TOTAL IN AREA
January	129,910,067	43,006,302	25,232,002	108,658,773	8,318,904	35,099,578	350,225,626
February	114,551,307	38,585,017	22,517,934	96,936,713	7,159,645	33,070,972	312,821,588
March	125,116,309	41,657,490	24,259,352	104,902,289	7,995,007	33,127,322	337,057,769
April	121,495,784	41,102,154	24,406,723	103,904,251	6,906,732	34,080,185	331,895,829
May	120,854,225	40,330,184	23,795,397	101,673,332	7,307,540	28,610,278	322,570,956
June	120,753,735	38,885,779	21,992,967	99,032,416	7,028,946	13,603,387	301,297,230
July	123,720,622	40,177,935	22,834,470	102,373,003	6,984,781	12,814,778	308,905,589
August	126,856,504	43,173,187	26,300,937	110,651,936	7,595,446	31,323,842	345,901,852
September	122,504,712	41,299,189	24,976,704	109,035,954	7,555,789	34,746,179	340,118,527
October	125,252,396	40,085,867	26,075,519	105,205,015	7,455,526	36,585,041	340,659,364
November	120,062,951	39,239,323	24,365,456	105,885,994	9,060,019	37,249,857	335,863,600
December	127,465,483	39,996,551	23,844,072	109,509,645	8,520,523	32,337,421	341,673,695
<b>Total</b>	<b>1,478,544,095</b>	<b>487,538,978</b>	<b>290,601,533</b>	<b>1,257,769,321</b>	<b>91,888,858</b>	<b>362,648,840</b>	<b>3,968,991,625</b>

**TOTAL DISPOSITION ON ROUTES OUTSIDE THE MARKETING AREA BY POOL PLANTS**

2005	WHOLE MILK	FAT FREE MILK	LOW FAT MILK	REDUCED FAT MILK	CULTURED MILK	FLAVORED MILK&DRINKS	TOTAL OUT OF AREA
January	19,080,117	7,882,264	4,920,563	19,592,933	828,352	5,481,256	57,785,485
February	16,384,571	6,643,257	4,134,078	16,555,417	815,491	5,137,824	49,670,638
March	19,380,033	7,877,336	4,916,233	19,771,768	900,061	5,421,428	58,266,859
April	18,243,912	7,732,635	4,789,692	19,065,573	862,969	5,774,821	56,469,602
May	18,583,993	7,705,475	4,748,372	19,331,400	886,684	4,774,589	56,030,513
June	19,133,747	7,296,243	4,506,990	18,917,649	846,888	2,774,427	53,475,944
July	19,191,716	7,868,938	4,316,353	19,650,959	848,421	2,733,906	54,610,293
August	19,983,973	8,032,108	5,240,915	20,990,830	895,425	4,805,055	59,948,306
September	19,039,367	7,615,495	4,905,494	20,332,558	895,334	5,836,373	58,624,621
October	18,973,179	7,872,370	5,069,298	20,347,832	922,456	6,030,466	59,215,601
November	18,160,444	7,242,347	4,646,558	19,378,351	1,017,222	5,943,851	56,388,773
December	19,013,284	7,282,649	4,614,425	19,921,452	981,930	5,060,568	56,874,308
<b>Total</b>	<b>225,168,336</b>	<b>91,051,117</b>	<b>56,808,971</b>	<b>233,856,722</b>	<b>10,701,233</b>	<b>59,774,564</b>	<b>677,360,943</b>

**TOTAL DISPOSITION ON ROUTES IN AND OUT OF THE MARKETING AREA BY POOL PLANTS**

2005	WHOLE MILK	FAT FREE MILK	LOW FAT MILK	REDUCED FAT MILK	CULTURED MILK	FLAVORED MILK&DRINKS	TOTAL SALES
January	148,990,184	50,888,566	30,152,565	128,251,706	9,147,256	40,580,834	408,011,111
February	130,935,878	45,228,274	26,652,012	113,492,130	7,975,136	38,208,796	362,492,226
March	144,496,342	49,534,826	29,175,585	124,674,057	8,895,068	38,548,750	395,324,628
April	139,739,696	48,834,789	29,196,415	122,969,824	7,769,701	39,855,006	388,365,431
May	139,438,218	48,035,659	28,543,769	121,004,732	8,194,224	33,384,867	378,601,469
June	139,887,482	46,182,022	26,499,957	117,950,065	7,875,834	16,377,814	354,773,174
July	142,912,338	48,046,873	27,150,823	122,023,962	7,833,202	15,548,684	363,515,882
August	146,840,477	51,205,295	31,541,852	131,642,766	8,490,871	36,128,897	405,850,158
September	141,544,079	48,914,684	29,882,198	129,368,512	8,451,123	40,582,552	398,743,148
October	144,225,575	47,958,237	31,144,817	125,552,847	8,377,982	42,615,507	399,874,965
November	138,223,395	46,481,670	29,012,014	125,264,345	10,077,241	43,193,708	392,252,373
December	146,478,767	47,279,200	28,458,497	129,431,097	9,502,453	37,397,989	398,548,003
<b>Total</b>	<b>1,703,712,431</b>	<b>578,590,095</b>	<b>347,410,504</b>	<b>1,491,626,043</b>	<b>102,590,091</b>	<b>422,423,404</b>	<b>4,646,352,568</b>

**SOUTHEAST MARKETING AREA  
FEDERAL ORDER NO. 7**

**DISPOSITION ON ROUTES INSIDE THE MARKETING AREA BY NONPOOL PLANTS**

2005	WHOLE MILK	FAT FREE MILK	LOW FAT MILK	REDUCED FAT MILK	CULTURED MILK	FLAVORED MILK&DRINKS	TOTAL NONPOOL
January	25,092,611	8,283,829	4,268,637	25,005,486	1,592,073	8,080,288	72,322,924
February	23,221,805	7,781,970	4,050,789	24,027,954	1,459,903	7,874,968	68,417,389
March	27,196,310	8,762,735	4,717,204	27,216,058	1,623,727	8,003,177	77,519,211
April	25,311,619	8,417,080	4,617,852	25,449,272	1,546,856	7,420,517	72,763,196
May	25,595,034	8,294,451	4,609,805	24,488,855	1,538,966	7,259,727	71,786,838
June	25,362,481	7,617,355	4,319,826	24,759,688	1,494,598	5,314,232	68,868,180
July	24,069,918	7,857,810	4,301,396	25,605,270	1,446,846	4,918,441	68,199,681
August	26,206,358	8,364,590	4,841,375	28,725,476	1,620,950	8,666,074	78,424,823
September	23,690,900	8,169,513	4,943,511	28,521,543	1,615,507	9,122,795	76,063,769
October	27,882,881	8,992,722	5,970,081	29,707,717	1,687,304	9,831,757	84,072,462
November	28,965,697	8,765,363	5,196,018	29,365,718	1,916,759	9,567,872	83,777,427
December	28,777,510	8,226,862	4,599,374	29,905,490	1,970,389	7,694,657	81,174,282
<b>Total</b>	<b>311,373,124</b>	<b>99,534,280</b>	<b>56,435,868</b>	<b>322,778,527</b>	<b>19,513,878</b>	<b>93,754,505</b>	<b>903,390,182</b>

**DISPOSITION ON ROUTES INSIDE THE MARKETING AREA BY POOL PLANTS**

2005	WHOLE MILK	FAT FREE MILK	LOW FAT MILK	REDUCED FAT MILK	CULTURED MILK	FLAVORED MILK&DRINKS	TOTAL POOL
January	129,910,067	43,006,302	25,232,002	108,658,773	8,318,904	35,099,578	350,225,626
February	114,551,307	38,585,017	22,517,934	96,936,713	7,159,645	33,070,972	312,821,588
March	125,116,309	41,657,490	24,259,352	104,902,289	7,995,007	33,127,322	337,057,769
April	121,495,784	41,102,154	24,406,723	103,904,251	6,906,732	34,080,185	331,895,829
May	120,854,225	40,330,184	23,795,397	101,673,332	7,307,540	28,610,278	322,570,956
June	120,753,735	38,885,779	21,992,967	99,032,416	7,028,946	13,603,387	301,297,230
July	123,720,622	40,177,935	22,834,470	102,373,003	6,984,781	12,814,778	308,905,589
August	126,856,504	43,173,187	26,300,937	110,651,936	7,595,446	31,323,842	345,901,852
September	122,504,712	41,299,189	24,976,704	109,035,954	7,555,789	34,746,179	340,118,527
October	125,252,396	40,085,867	26,075,519	105,205,015	7,455,526	36,585,041	340,659,364
November	120,062,951	39,239,323	24,365,456	105,885,994	9,060,019	37,249,857	335,863,600
December	127,465,483	39,996,551	23,844,072	109,509,645	8,520,523	32,337,421	341,673,695
<b>Total</b>	<b>1,478,544,095</b>	<b>487,538,978</b>	<b>290,601,533</b>	<b>1,257,769,321</b>	<b>91,888,858</b>	<b>362,648,840</b>	<b>3,968,991,625</b>

**TOTAL DISPOSITION ON ROUTES INSIDE THE MARKETING AREA**

2005	WHOLE MILK	FAT FREE MILK	LOW FAT MILK	REDUCED FAT MILK	CULTURED MILK	FLAVORED MILK&DRINKS	TOTAL SALES
January	155,002,678	51,290,131	29,500,639	133,664,259	9,910,977	43,179,866	422,548,550
February	137,773,112	46,366,987	26,568,723	120,964,667	8,619,548	40,945,940	381,238,977
March	152,312,619	50,420,225	28,976,556	132,118,347	9,618,734	41,130,499	414,576,980
April	146,807,403	49,519,234	29,024,575	129,353,523	8,453,588	41,500,702	404,659,025
May	146,449,259	48,624,635	28,405,202	126,162,187	8,846,506	35,870,005	394,357,794
June	146,116,216	46,503,134	26,312,793	123,792,104	8,523,544	18,917,619	370,165,410
July	147,790,540	48,035,745	27,135,866	127,978,273	8,431,627	17,733,219	377,105,270
August	153,062,862	51,537,777	31,142,312	139,377,412	9,216,396	39,989,916	424,326,675
September	146,195,612	49,468,702	29,920,215	137,557,497	9,171,296	43,868,974	416,182,296
October	153,135,277	49,078,589	32,045,600	134,912,732	9,142,830	46,416,798	424,731,826
November	149,028,648	48,004,686	29,561,474	135,251,712	10,976,778	46,817,729	419,641,027
December	156,242,993	48,223,413	28,443,446	139,415,135	10,490,912	40,032,078	422,847,977
<b>Total</b>	<b>1,789,917,219</b>	<b>587,073,258</b>	<b>347,037,401</b>	<b>1,580,547,848</b>	<b>111,402,736</b>	<b>456,403,345</b>	<b>4,872,381,807</b>

**SOUTHEAST MARKETING AREA  
FEDERAL ORDER NO. 7**

**TOTAL CLASS II UTILIZATION BY POOL HANDLERS**

<b>2005</b>	<b>NONFLUID USED TO PRODUCE</b>	<b>TRANSFERRED OR DIVERTED TO NONPOOL PLANTS</b>	<b>SHRINKAGE/ USED TO PRODUCE/ OTHER USES</b>
January	1,678,985	43,676,255	27,481,537
February	1,241,229	55,500,167	26,661,107
March	1,908,335	60,053,677	36,637,858
April	1,533,169	61,105,416	32,054,585
May	1,681,581	68,878,763	33,275,997
June	1,881,913	57,498,655	35,625,283
July	2,006,895	45,806,304	34,882,947
August	1,969,847	42,234,683	39,193,955
September	1,400,619	40,782,853	31,991,082
October	1,341,868	34,864,535	30,464,545
November	1,185,173	32,472,525	30,601,837
December	1,398,078	37,120,079	29,147,009
<b>Total</b>	<b>19,227,692</b>	<b>579,993,912</b>	<b>388,017,742</b>

**TOTAL CLASS II UTILIZATION**

<b>2005</b>	<b>PRODUCT POUNDS</b>	<b>BUTTERFAT POUNDS</b>	<b>BUTTERFAT TEST</b>	<b>DAILY UTILIZATION</b>
January	72,836,777	5,120,233	7.03%	2,349,573
February	83,402,503	5,540,074	6.64%	2,978,661
March	98,599,870	7,213,669	7.32%	3,180,641
April	94,693,170	6,398,887	6.76%	3,156,439
May	103,836,341	6,943,887	6.69%	3,349,559
June	95,005,851	7,141,949	7.52%	3,166,862
July	82,696,146	6,654,569	8.05%	2,667,618
August	83,398,485	7,120,411	8.54%	2,690,274
September	74,174,554	6,211,216	8.37%	2,472,485
October	66,670,948	6,134,549	9.20%	2,150,676
November	64,259,535	6,164,018	9.59%	2,141,985
December	67,665,166	6,231,157	9.21%	2,182,747
<b>Total</b>	<b>987,239,346</b>	<b>76,874,619</b>	<b>7.79%</b>	<b>2,704,765</b>

**SOUTHEAST MARKETING AREA  
FEDERAL ORDER NO. 7**

**TOTAL CLASS III UTILIZATION BY POOL HANDLERS**

2005	<u>SHRINKAGE 1/</u>	<u>TRANSFERRED OR DIVERTED TO NONPOOL PLANTS</u>	<u>USED TO PRODUCE/ OTHER USES 2/</u>
January	0	85,754,926	0
February	0	62,469,144	0
March	0	97,425,883	0
April	0	113,886,252	0
May	0	134,719,939	0
June	0	118,014,893	0
July	0	85,284,554	0
August	0	75,063,912	0
September	0	72,214,587	0
October	0	74,188,205	0
November	0	77,415,943	0
December	0	94,024,414	0
<b>Total</b>	<b>0</b>	<b>1,090,462,652</b>	<b>0</b>

**TOTAL CLASS III UTILIZATION**

2005	<u>PRODUCT POUNDS</u>	<u>BUTTERFAT POUNDS</u>	<u>BUTTERFAT TEST</u>	<u>DAILY AVERAGE UTILIZATION</u>
January	85,754,926	3,888,380	4.53%	2,766,288
February	62,469,144	2,598,639	4.16%	2,231,041
March	97,425,883	4,063,680	4.17%	3,142,770
April	113,886,252	4,465,189	3.92%	3,796,208
May	134,719,939	5,033,312	3.74%	4,345,804
June	118,014,893	4,305,259	3.65%	3,933,830
July	85,284,554	3,576,724	4.19%	2,751,115
August	75,063,912	3,333,870	4.44%	2,421,417
September	72,214,587	3,129,300	4.33%	2,407,153
October	74,188,205	3,244,577	4.37%	2,393,168
November	77,415,943	3,475,411	4.49%	2,580,531
December	94,024,414	4,038,769	4.30%	3,033,046
<b>Total</b>	<b>1,090,462,652</b>	<b>45,153,110</b>	<b>4.14%</b>	<b>2,987,569</b>

1/ Pursuant § 1000.43 (b) (1). Assigned to lowest priced class.

2/ Pursuant § 1000.40 (e). Other Uses assigned to lowest priced class.

**SOUTHEAST MARKETING AREA  
FEDERAL ORDER NO. 7**

**TOTAL CLASS IV UTILIZATION BY POOL HANDLERS**

2005 <sup>a</sup>	<u>ENDING INVENTORY</u>	<u>NONFLUID USED TO FORTIFY</u>	<u>SHRINKAGE 1/</u>	<u>TRANSFERRED OR DIVERTED TO NONPOOL PLANTS</u>	<u>USED TO PRODUCE/ OTHER USES 2/</u>
January	22,895,534	1,603,980	7,345,885	78,080,623	8,821,584
February	23,415,071	1,576,373	6,329,838	85,075,584	8,959,975
March	17,999,715	1,638,227	7,146,001	81,496,614	21,086,277
April	16,593,813	1,469,737	6,825,560	91,832,351	24,456,032
May	17,214,952	1,498,626	6,729,898	103,315,503	26,342,711
June	17,414,820	1,399,194	6,952,215	71,766,017	21,041,185
July	25,186,731	1,395,542	6,740,715	43,480,194	18,520,560
August	21,768,317	1,589,064	7,817,512	52,919,507	11,886,379
September	10,412,355	1,596,109	5,655,854	41,491,665	5,075,553
October	22,376,359	2,059,554	7,782,468	36,531,571	4,411,906
November	23,156,792	3,212,253	7,402,041	51,270,297	8,278,737
December	17,946,675	3,437,667	7,356,479	68,511,353	11,333,154
<b>Total</b>	<b>236,381,134</b>	<b>22,476,326</b>	<b>84,084,466</b>	<b>805,771,279</b>	<b>170,214,053</b>

**TOTAL CLASS IV UTILIZATION**

2005	<u>PRODUCT POUNDS</u>	<u>BUTTERFAT POUNDS</u>	<u>BUTTERFAT TEST</u>	<u>DAILY UTILIZATION</u>
January	118,747,606	8,553,396	7.20%	3,830,568
February	125,356,841	8,559,337	6.83%	4,477,030
March	129,366,834	7,837,258	6.06%	4,173,124
April	141,177,493	8,278,446	5.86%	4,705,916
May	155,101,690	8,032,246	5.18%	5,003,280
June	118,573,431	5,812,314	4.90%	3,952,448
July	95,323,742	4,804,593	5.04%	3,074,959
August	95,980,779	5,400,424	5.63%	3,096,154
September	64,231,536	5,422,302	8.44%	2,141,051
October	73,161,858	6,008,150	8.21%	2,360,060
November	93,320,120	7,078,254	7.58%	3,110,671
December	108,585,328	7,872,559	7.25%	3,502,753
<b>Total</b>	<b>1,318,927,258</b>	<b>83,659,279</b>	<b>6.34%</b>	<b>3,613,499</b>

1/ Pursuant § 1000.43 (b) (1). Shrinkage assigned to lowest priced class.

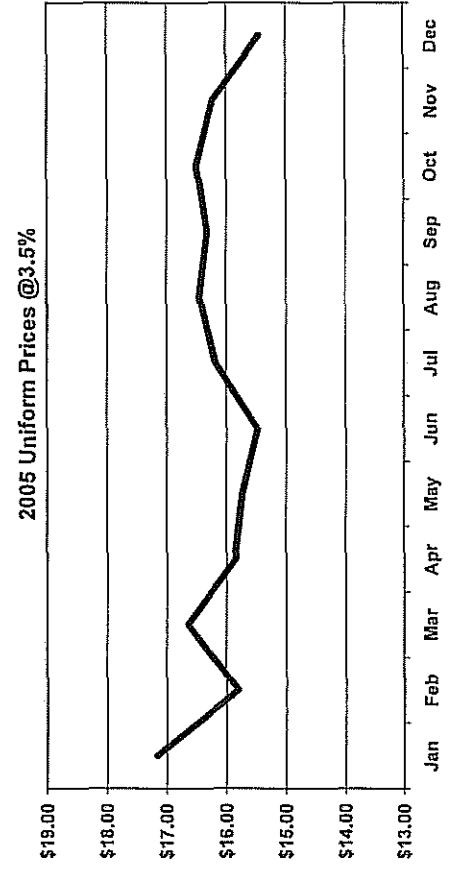
2/ Pursuant § 1000.40 (d) and (e). Used to Produce, Bulk Ending Inventory & NFMP-UTF assigned to Class IV. Other Uses assigned to lowest priced class.

**SOUTHEAST MARKETING AREA  
FEDERAL ORDER NO. 7  
ANNOUNCED FEDERAL ORDER CLASS & UNIFORM PRICES**

CLASS I*		CLASS II	
2005	2005	2005	2005
Skim	Milk @ 3.5%	Butterfat	Milk @ 3.5%
January	\$12.80	\$2.1128	\$19.75
February	\$11.07	\$1.7748	\$16.89
March	\$12.69	\$1.7968	\$18.53
April	\$11.45	\$1.7669	\$17.23
May	\$12.24	\$1.7402	\$17.90
June	\$11.68	\$1.5576	\$16.72
July	\$11.83	\$1.5920	\$16.99
August	\$11.39	\$1.8706	\$17.54
September	\$10.81	\$1.8182	\$16.80
October	\$11.06	\$1.9128	\$17.37
November	\$11.58	\$1.8526	\$17.66
December	\$11.13	\$1.6943	\$16.67
<b>Average</b>	<b>\$11.64</b>	<b>\$1.7908</b>	<b>\$17.50</b>

CLASS III		CLASS IV	
2005	2005	2005	2005
Skim	Milk @ 3.5%	Butterfat	Milk @ 3.5%
January	\$8.37	\$1.7330	\$14.14
February	\$8.79	\$1.7754	\$14.70
March	\$8.32	\$1.7279	\$14.08
April	\$8.99	\$1.6964	\$14.61
May	\$8.66	\$1.5475	\$13.77
June	\$8.65	\$1.5932	\$13.92
July	\$8.34	\$1.8007	\$14.35
August	\$7.48	\$1.8246	\$13.60
September	\$7.97	\$1.8872	\$14.30
October	\$8.25	\$1.8256	\$14.35
November	\$7.99	\$1.6114	\$13.35
December	\$8.40	\$1.5036	\$13.37
<b>Average</b>	<b>\$8.35</b>	<b>\$1.7105</b>	<b>\$14.05</b>

UNIFORM*	
2005	2005
Skim	Milk @ 3.5%
January	\$11.02
February	\$9.93
March	\$10.88
April	\$10.18
May	\$10.46
June	\$10.29
July	\$10.52
August	\$10.35
September	\$10.16
October	\$10.34
November	\$10.62
December	\$10.28
<b>Average</b>	<b>\$10.42</b>



\* Class 1 and Uniform Prices are at Fulton County (Atlanta), Georgia

**SOUTHEAST MARKETING AREA  
FEDERAL ORDER NO. 7**

**NASS DAIRY PRODUCT PRICE AVERAGES USED IN  
FEDERAL MILK ORDER PRICE FORMULAS**

**Class I (Skim, Bfat), Class II (Skim, Nonfat Solids)**

2005	<u>Weeks Ending</u>	<u>Butter</u>	<u>Nonfat Dry Milk</u>	<u>Cheese</u>	<u>Dry Whey</u>
Dollars per pound					
January	12/11,18	1.8498	0.8698	1.7648	0.2436
February	1/8,15	1.5682	0.8892	1.4790	0.2481
March	2/5,12	1.5865	0.8964	1.6482	0.2479
April	3/5,12	1.5616	0.9073	1.5140	0.2485
May	4/9,16	1.5393	0.9159	1.5777	0.2596
June	5/7,14	1.3872	0.9287	1.4612	0.2597
July	6/4,11	1.4158	0.9289	1.4827	0.2684
August	7/9,16	1.6480	0.9377	1.5224	0.2796
September	8/6,13	1.6043	0.9594	1.4449	0.2843
October	9/10,17	1.6832	0.9726	1.4965	0.2904
November	10/8,15	1.6338	0.9719	1.5205	0.3055
December	11/5,12	1.5011	0.9834	1.4213	0.3084

**Class II (Bfat), Class III, Class IV, Components**

2005	<u>Weeks Ending</u>	<u>Butter</u>	<u>Nonfat Dry Milk</u>	<u>Cheese</u>	<u>Dry Whey</u>
Dollars per pound					
January	1/1,8,15,22,29	1.5592	0.8906	1.5165	0.2463
February	2/5,12,19,26	1.5945	0.8990	1.5711	0.2478
March	3/5,12,19,26	1.5549	0.9083	1.5061	0.2513
April	4/2,9,16,23	1.5287	0.9156	1.5590	0.2580
May	4/30,5/7,14,21,28	1.4046	0.9289	1.4765	0.2603
June	6/4,11,18,25	1.4427	0.9259	1.4845	0.2696
July	7/2,9,16,23,30	1.6156	0.9389	1.5156	0.2794
August	8/6,13,20,27	1.6355	0.9601	1.4322	0.2869
September	9/3,10,17,24	1.6877	0.9705	1.4958	0.2960
October	10/1,8,15,22,29	1.6363	0.9794	1.4996	0.3038
November	11/5,12,19,26	1.4578	0.9835	1.3968	0.3149
December	12/3,10,17,24	1.3680	0.9899	1.3964	0.3242



**Producer Milk By County/State  
(More Than Two Producers Per County)**

Federal Order No. 7

May 2005

County Name	Co. Code	No. Farms	Total Pounds
<b>Alabama</b>			
* Clay	27	3	537,084
Covington	39	3	832,185
Cullman	43	9	2,674,873
Dallas	47	3	492,019
De kalb	49	4	405,869
Fayette	57	4	814,165
Franklin	59	3	1,413,743
Hale	65	4	831,634
Lamar	75	3	565,745
Lawrence	79	4	301,963
Morgan	103	4	2,572,091
Tuscaloosa	125	3	368,755
Restricted	999	<u>38</u>	<u>7,776,168</u>
<b>Total for Alabama</b>		<u><u>85</u></u>	<u><u>19,586,294</u></u>

**Arkansas**

Benton	7	20	2,876,570
Boone	9	8	524,223
Carroll	15	14	1,414,347
Cleburne	23	5	1,293,736
Conway	29	15	2,253,119
Faulkner	45	10	3,147,046
Franklin	47	6	866,881
Fulton	49	10	691,921
Logan	83	8	596,891
Lonoke	85	6	1,081,171
Madison	87	12	1,004,987
Searcy	129	13	1,113,064
Stone	137	4	351,463
Van buren	141	12	1,537,823
Washington	143	25	3,163,078
White	145	8	885,217
Yell	149	3	328,643
Restricted	999	<u>22</u>	<u>3,281,908</u>
<b>Total for Arkansas</b>		<u><u>201</u></u>	<u><u>26,412,088</u></u>

**Florida**  
Restricted

**Georgia**

Bibb	21	3	276,367
Burke	33	6	2,083,618
Carroll	45	3	377,277

**Producer Milk By County/State  
(More Than Two Producers Per County)**

Federal Order No. 7

May 2005

County Name	Co. Code	No. Farms	Total Pounds
Elbert	105	3	323,709
Gilmer	123	4	876,830
* Greene	133	17	4,617,192
Hall	139	4	649,344
Hart	147	4	1,136,591
Houston	153	4	480,454
Jefferson	163	12	2,031,822
Jenkins	165	6	1,365,476
Jones	169	4	1,280,551
Lamar	171	4	783,309
Macon	193	24	921,387
Monroe	207	5	333,146
Morgan	211	35	10,065,544
Oglethorpe	221	4	2,090,909
Polk	233	5	225,216
Putnam	237	37	12,199,617
Taliaferro	265	5	1,303,632
Troup	285	4	530,671
Union	291	4	196,554
Walker	295	8	730,836
Warren	301	5	1,381,671
Washington	303	3	886,317
Wilkes	317	9	2,464,768
Restricted	999	32	6,997,825
<b>Total for Georgia</b>		<u>254</u>	<u>56,610,633</u>

**Illinois**

Restricted

**Indiana**

Restricted

**Kansas**

Restricted

**Kentucky**

Adair	1	18	2,207,821
Allen	3	5	125,577
Ballard	7	3	477,457
Barren	9	68	10,792,256
Breckinridge	27	7	282,893
Carlisle	39	3	370,644
Christian	47	37	2,674,168
Graves	83	13	1,368,866
Grayson	85	12	1,797,312
Green	87	20	1,193,497
Hardin	93	11	1,515,584
Hart	99	34	2,121,064

**Producer Milk By County/State  
(More Than Two Producers Per County)**

Federal Order No. 7

May 2005

County Name	Co. Code	No. Farms	Total Pounds
Larue	123	4	533,429
Logan	141	18	4,669,713
* Metcalfe	169	46	3,078,465
Monroe	171	17	995,824
Simpson	213	7	1,426,527
Taylor	217	13	1,269,351
Todd	219	23	2,299,059
Warren	227	34	4,152,779
Restricted	999	16	1,265,641
<b>Total for Kentucky</b>		<u>409</u>	<u>44,617,927</u>
<b>Louisiana</b>			
Beauregard	11	5	609,143
De soto	31	18	4,484,976
East baton rouge	33	3	510,685
East feliciana	37	3	616,425
Sabine	85	5	651,888
St. helena	91	29	4,848,469
Tangipahoa	105	116	16,462,271
Washington	117	93	11,828,392
Restricted	999	15	1,387,575
<b>Total for Louisiana</b>		<u>287</u>	<u>41,399,824</u>
<b>Michigan</b>			
Restricted			
<b>Mississippi</b>			
Amite	5	13	2,224,093
Clay	25	3	123,403
Copiah	29	10	1,295,580
Harrison	47	8	432,687
Jones	67	5	984,799
Lawrence	77	5	546,219
Leake	79	4	581,684
Lee	81	3	291,496
Lincoln	85	20	2,638,672
Marion	91	19	3,275,531
Marshall	93	4	1,722,608
Neshoba	99	4	268,694
Newton	101	10	2,023,279
Noxubee	103	8	1,622,306
Pearl river	109	6	449,665
Pike	113	22	3,409,000
Stone	131	5	179,844
Tate	137	6	1,490,263
Walthall	147	37	4,668,311

**Producer Milk By County/State**  
**(More Than Two Producers Per County)**  
 Federal Order No. 7  
 May 2005

County Name	Co. Code	No. Farms	Total Pounds
Winston	159	3	239,041
Restricted	999	34	8,684,800
<b>* Total for Mississippi</b>		<u>229</u>	<u>37,151,975</u>

**Missouri**

Barry	9	33	3,806,186
Barton	11	6	715,486
Bates	13	13	974,132
Benton	15	7	547,944
Camden	29	7	654,307
Cedar	39	6	465,884
Christian	43	27	2,117,461
Dade	57	4	541,198
Dallas	59	51	5,386,028
Douglas	67	68	5,719,908
Greene	77	35	3,658,546
Henry	83	3	157,874
Hickory	85	8	821,330
Howell	91	43	4,493,028
Jasper	97	15	1,866,774
Johnson	101	3	334,105
Laclede	105	69	6,639,293
Lafayette	107	11	1,065,913
Lawrence	109	53	6,444,565
Mcdonald	119	9	1,119,314
Newton	145	23	2,860,747
Oregon	149	9	914,940
Ozark	153	27	2,540,619
Pettis	159	3	348,271
Polk	167	54	8,575,524
St. clair	185	4	258,259
Stone	209	23	2,519,879
Taney	213	3	226,051
Texas	215	53	5,709,912
Webster	225	102	10,194,168
Wright	229	162	18,504,941
Restricted	999	16	2,431,513
<b>Total for Missouri</b>		<u>950</u>	<u>102,614,100</u>

**Nebraska**  
 Restricted

**New Mexico**  
 Restricted

**North Carolina**  
 Restricted

**Producer Milk By County/State  
(More Than Two Producers Per County)**

Federal Order No. 7

May 2005

County Name	Co. Code	No. Farms	Total Pounds
<b>Ohio</b>			
Restricted			
<b>Oklahoma</b>			
Adair	1	51	5,955,333
Bryan	13	6	1,007,683
Cherokee	21	17	2,249,381
Coal	29	3	236,308
Craig	35	4	492,802
Delaware	41	25	3,663,117
Mayes	97	28	3,716,559
Muskogee	101	8	1,335,241
Nowata	105	3	250,242
Ottawa	115	9	1,172,142
Rogers	131	7	469,338
Wagoner	145	3	308,265
Restricted	999	8	595,797
<b>Total for Oklahoma</b>		<u>172</u>	<u>21,452,208</u>
<b>Pennsylvania</b>			
Restricted			
<b>South Carolina</b>			
Restricted			
<b>Tennessee</b>			
Bedford	3	9	1,642,555
Bledsoe	7	7	556,032
Bradley	11	9	1,372,092
Cannon	15	10	843,616
Coffee	31	15	2,396,203
Cumberland	35	8	2,075,860
Franklin	51	4	348,477
Gibson	53	3	533,842
Giles	55	18	2,032,180
Grundy	61	4	208,333
Henry	79	21	2,973,343
Lawrence	99	17	2,543,743
Lincoln	103	13	1,524,346
Marshall	117	34	5,872,488
Maury	119	16	2,959,863
Overton	133	12	1,119,101
Putnam	141	6	1,139,722
Robertson	147	16	3,604,868
Rutherford	149	17	1,830,881
Smith	159	4	244,783

**Producer Milk By County/State  
(More Than Two Producers Per County)**

Federal Order No. 7

May 2005

County Name	Co. Code	No. Farms	Total Pounds
Sumner	165	11	1,440,739
Warren	177	27	3,125,659
* Weakley	183	6	437,042
White	185	15	2,701,686
Williamson	187	8	837,823
Wilson	189	7	660,550
Restricted	999	25	2,601,099
<b>Total for Tennessee</b>		<u>342</u>	<u>47,626,926</u>

**Texas**

Bailey	17	4	14,825,837
Bowie	37	3	3,454,034
Camp	63	4	864,817
Cherokee	73	12	4,879,508
Franklin	159	20	5,816,618
Henderson	213	3	1,777,781
Hopkins	223	130	35,562,227
Lamar	277	8	1,990,391
Lamb	279	3	13,783,839
Nacogdoches	347	6	1,359,308
Rains	379	13	2,577,037
Upshur	459	15	5,038,259
Van zandt	467	13	7,291,609
Wood	499	42	9,585,494
Restricted	999	26	19,282,477
<b>Total for Texas</b>		<u>302</u>	<u>128,089,236</u>

**Virginia**

Restricted

**Wisconsin**

Restricted

	No. Farms	Total Pounds
<b>Unrestricted States Total</b>	<u>3,231</u>	<u>525,561,211</u>
<b>Restricted States Total</b>	<u>228</u>	<u>198,024,177</u>
<b>Order 7 Total</b>	<u>3,459</u>	<u>723,585,388</u>

**Producer Milk By County/State  
(More Than Two Producers Per County)**

Federal Order No. 7

December 2005

County Name	Code	No. Farms	Total Pounds
<b>Alabama</b>			
Clay	27	3	388,980
Covington	39	3	112,198
Cullman	43	9	2,463,107
Dallas	47	3	367,928
De kalb	49	3	322,095
Fayette	57	4	713,070
Franklin	59	3	975,250
Hale	65	3	626,632
Lamar	75	3	518,855
Lawrence	79	4	217,801
Marengo	91	3	387,624
Morgan	103	5	1,097,039
Restricted	999	34	5,648,307
<b>Total for Alabama</b>		<b>80</b>	<b>13,838,886</b>
<b>Arkansas</b>			
Benton	7	18	2,386,340
Boone	9	8	472,263
Carroll	15	12	1,177,162
Cleburne	23	5	1,075,462
Conway	29	15	1,959,668
Faulkner	45	7	930,778
Franklin	47	6	752,002
Fulton	49	9	546,112
Logan	83	8	500,078
Lonoke	85	6	1,110,437
Madison	87	11	618,958
Searcy	129	12	726,501
Stone	137	4	249,233
Van buren	141	12	1,416,689
Washington	143	25	2,143,638
White	145	8	796,730
Yell	149	3	252,582
Restricted	999	24	2,832,323
<b>Total for Arkansas</b>		<b>193</b>	<b>19,946,956</b>
<b>California</b>			
Restricted			
<b>Florida</b>			
Restricted			
<b>Georgia</b>			
Appling	1	4	357,891

**Producer Milk By County/State  
(More Than Two Producers Per County)**

Federal Order No. 7

December 2005

County Name	Code	No. Farms	Total Pounds
Burke	33	5	2,099,126
Elbert	105	3	299,245
* Gilmer	123	4	699,060
Greene	133	15	3,638,164
Hall	139	3	129,449
Jefferson	163	10	1,643,747
Jenkins	165	7	374,780
Jones	169	3	902,239
Lamar	171	3	197,764
Laurens	175	5	47,225
Macon	193	24	10,162,313
Morgan	211	36	7,503,234
Oglethorpe	221	4	490,919
Polk	233	3	158,087
Putnam	237	35	10,790,977
Taliaferro	265	5	1,106,149
Troup	285	3	435,944
Union	291	3	181,466
Walker	295	8	461,731
Warren	301	5	1,035,596
Washington	303	3	817,882
Wilkes	317	8	1,310,855
Restricted	999	37	5,678,006
<b>Total for Georgia</b>		<u>236</u>	<u>50,521,849</u>

**Illinois**

Restricted

**Indiana**

Restricted

**Kansas**

Allen	1	6	304,220
Anderson	3	11	959,783
Bourbon	11	4	441,425
Crawford	37	4	422,363
Douglas	45	4	492,324
Franklin	59	3	81,009
Greenwood	73	4	601,970
Johnson	91	4	290,046
Labette	99	5	118,170
Leavenworth	103	4	306,372
Linn	107	6	859,547
Montgomery	125	5	350,049
Neosho	133	8	489,762
Restricted	999	12	6,119,515
<b>Total for Kansas</b>		<u>80</u>	<u>11,836,555</u>



**Producer Milk By County/State  
(More Than Two Producers Per County)**

Federal Order No. 7  
December 2005

County Name	Code	No. Farms	Total Pounds
<b>Kentucky</b>			
Adair	1	19	1,530,914
Allen	3	5	106,701
Ballard	7	3	466,080
Barren	9	64	9,146,974
Breckinridge	27	7	230,671
Carlisle	39	4	533,898
Christian	47	41	2,549,008
Edmonson	61	3	230,360
Graves	83	13	1,274,899
Grayson	85	20	2,043,927
Green	87	18	862,480
Hardin	93	15	1,634,718
Hart	99	41	2,419,817
Larue	123	6	530,250
Logan	141	15	4,435,398
Metcalfe	169	45	2,684,939
Monroe	171	17	861,315
Simpson	213	7	1,267,394
Taylor	217	14	1,032,240
Todd	219	23	1,980,278
Warren	227	31	3,706,212
Restricted	999	12	790,282
<b>Total for Kentucky</b>		<b>423</b>	<b>40,318,755</b>

**Louisiana**

Beauregard	11	4	423,207
De soto	31	17	4,012,263
East baton rouge	33	3	378,965
East feliciana	37	3	428,733
Sabine	85	5	580,735
St. helena	91	28	4,195,238
Tangipahoa	105	104	12,267,773
Washington	117	81	8,839,787
Restricted	999	14	995,724
<b>Total for Louisiana</b>		<b>259</b>	<b>32,122,425</b>

**Maryland**  
Restricted

**Michigan**  
Restricted

**Producer Milk By County/State  
(More Than Two Producers Per County)**

Federal Order No. 7

December 2005

County Name	Code	No. Farms	Total Pounds
<b>Mississippi</b>			
<sup>a</sup> Amite	5	12	1,779,371
Clay	25	3	96,817
Copiah	29	10	940,729
Jones	67	4	608,793
Lawrence	77	5	471,474
Leake	79	3	436,441
Lee	81	3	213,659
Lincoln	85	18	1,751,375
Marion	91	19	2,816,135
Marshall	93	4	1,451,932
Neshoba	99	4	272,776
Newton	101	9	1,510,825
Noxubee	103	8	1,442,784
Pearl river	109	5	267,391
Pike	113	22	2,401,668
Tate	137	5	1,131,138
Walthall	147	33	3,620,591
Restricted	999	35	7,663,438
<b>Total for Mississippi</b>		<u>202</u>	<u>28,877,337</u>

**Missouri**

Barry	9	33	3,392,571
Barton	11	6	555,919
Bates	13	10	880,336
Benton	15	6	369,341
Camden	29	7	515,697
Cape girardeau	31	14	2,048,762
Cedar	39	6	333,748
Christian	43	26	1,824,428
Dade	57	5	523,300
Dallas	59	52	4,812,487
Douglas	67	64	4,670,408
Greene	77	37	3,288,560
Henry	83	6	175,653
Hickory	85	8	702,746
Howell	91	39	3,602,643
Jasper	97	14	1,756,915
Johnson	101	8	339,624
Laclede	105	64	5,506,183
Lafayette	107	10	820,436
Lawrence	109	57	5,769,162
Mcdonald	119	9	934,660
Newton	145	24	2,740,948
Oregon	149	9	831,382
Ozark	153	24	1,916,277
Perry	157	12	420,468

**Producer Milk By County/State  
(More Than Two Producers Per County)**

Federal Order No. 7

December 2005

County Name	Code	No. Farms	Total Pounds
Pettis	159	3	266,308
* Polk	167	53	8,111,900
St. clair	185	4	174,366
Stone	209	22	2,177,091
Taney	213	3	200,367
Texas	215	52	5,064,810
Webster	225	94	8,481,769
Wright	229	153	15,364,866
Restricted	999	16	1,350,175
<b>Total for Missouri</b>		<u>950</u>	<u>89,924,306</u>
<b>New Mexico</b>			
Restricted			
<b>North Carolina</b>			
Restricted			
<b>Ohio</b>			
Restricted			
<b>Oklahoma</b>			
Adair	1	48	4,768,533
Bryan	13	6	933,901
Cherokee	21	16	1,946,489
Craig	35	4	350,660
Delaware	41	22	2,731,114
Mayes	97	28	3,218,857
Muskogee	101	8	1,003,981
Ottawa	115	7	709,922
Rogers	131	7	459,766
Restricted	999	13	8,965,708
<b>Total for Oklahoma</b>		<u>159</u>	<u>25,088,931</u>
<b>Pennsylvania</b>			
Restricted			
<b>South Carolina</b>			
Restricted			
<b>Tennessee</b>			
Bedford	3	7	1,531,281
Bledsoe	7	6	465,950
Bradley	11	8	772,393
Cannon	15	8	497,553
Coffee	31	15	1,960,288
Cumberland	35	7	764,945

**Producer Milk By County/State  
(More Than Two Producers Per County)**

Federal Order No. 7

December 2005

County Name	Code	No. Farms	Total Pounds
Franklin	51	7	313,703
*Gibson	53	4	498,650
Giles	55	18	2,005,270
Grundy	61	5	249,255
Henry	79	21	2,834,918
Lawrence	99	16	2,183,136
Lincoln	103	12	1,403,480
Marshall	117	29	4,890,041
Maury	119	14	2,722,026
Overton	133	12	863,369
Putnam	141	3	22,125
Robertson	147	15	3,034,951
Rutherford	149	12	926,008
Smith	159	4	207,569
Sumner	165	11	1,384,013
Warren	177	25	2,557,407
Weakley	183	6	451,648
White	185	15	2,677,826
Williamson	187	4	425,027
Wilson	189	6	539,514
Restricted	999	23	1,586,333
<b>Total for Tennessee</b>		<u>313</u>	<u>37,768,679</u>

**Texas**

Archer	9	3	965,544
Bowie	37	3	2,529,273
Camp	63	3	353,490
Castro	69	3	1,628,144
Cherokee	73	12	4,419,786
Comanche	93	3	6,800,064
Erath	143	8	14,016,934
Franklin	159	20	4,960,443
Henderson	213	3	1,370,927
Hopkins	223	118	19,289,258
Johnson	251	7	2,843,831
Lamar	277	8	1,613,685
Nacogdoches	347	4	1,084,341
Parmer	369	4	16,366,129
Rains	379	12	1,215,930
Upshur	459	15	2,548,803
Van zandt	467	13	2,572,371
Wood	499	41	4,105,792
Restricted	999	31	26,899,932
<b>Total for Texas</b>		<u>311</u>	<u>115,584,677</u>

**Virginia**  
Restricted

**Producer Milk By County/State  
(More Than Two Producers Per County)**

Federal Order No. 7

December 2005

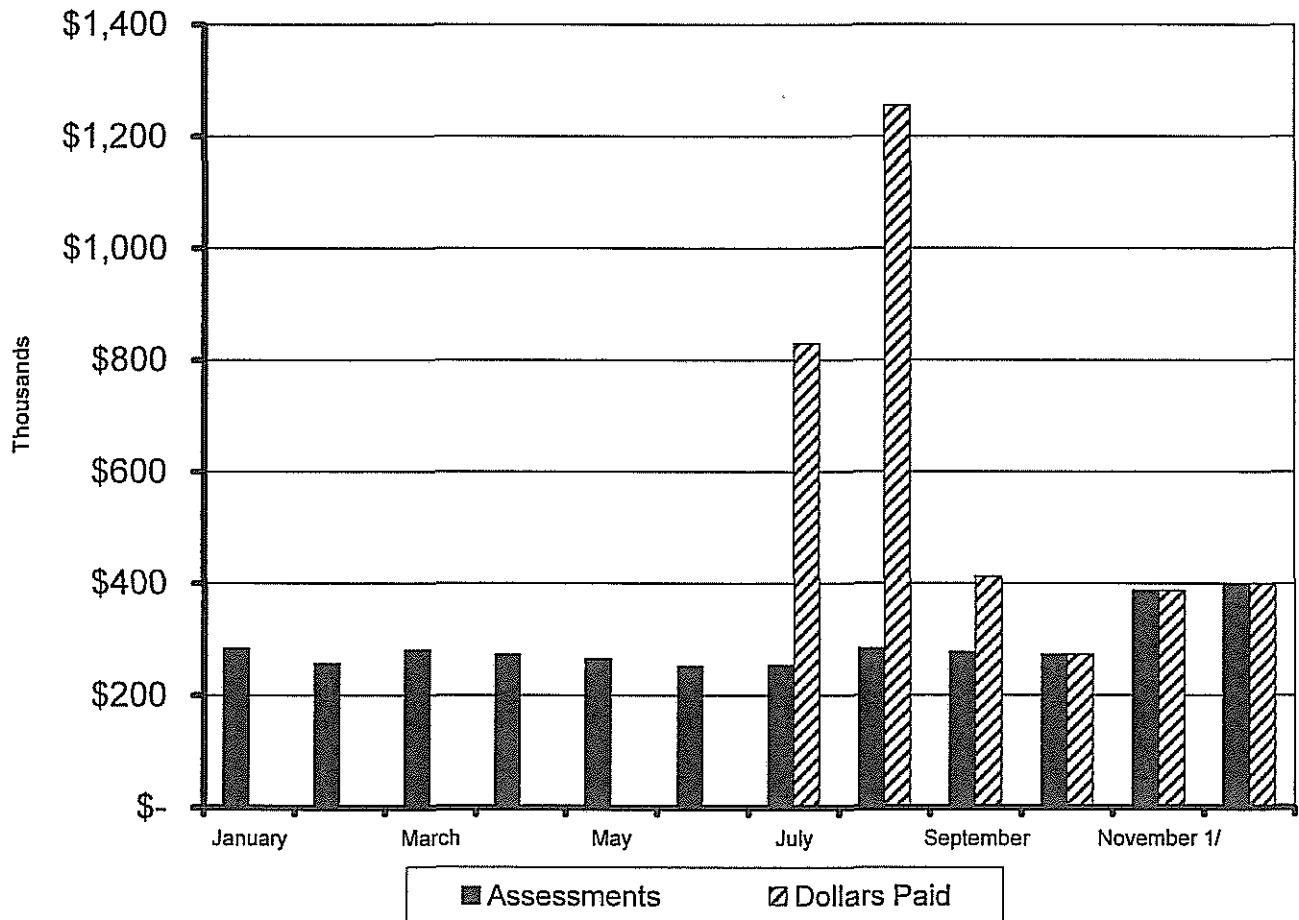
County Name	Code	No. Farms	Total Pounds
Wisconsin Restricted			
		No. Farms	Total Pounds
Unrestricted States Total		<u>3,206</u>	<u>465,829,356</u>
Restricted States Total		<u>141</u>	<u>161,178,439</u>
Order 7 Total		<u>3,347</u>	<u>627,007,795</u>

**SOUTHEAST MARKETING AREA  
FEDERAL ORDER NO. 7  
TRANSPORTATION CREDIT BALANCING FUND**

2005	Assessments	Pounds Claimed	Dollars Claimed	Dollars Paid	Proration
Beginning Balance	\$ -				
Jan-June	\$ 1,615,235.97				
July	\$ 254,114.04	107,695,929	\$ 830,657.85	\$ 830,657.85	100.00%
August	\$ 284,215.75	137,835,497	\$ 1,254,947.08	\$ 1,254,947.08	100.00%
September	\$ 278,349.86	117,812,893	\$ 999,794.87	\$ 412,976.16	41.31%
October	\$ 273,671.55	127,900,293	\$ 1,183,953.93	\$ 273,672.55	23.12%
November 1/	\$ 388,326.10	98,083,868	\$ 963,389.61	\$ 387,844.57	40.26%
December	\$ 400,937.46	96,578,289	\$ 763,073.10	\$ 400,822.92	52.53%
<b>TOTAL 2/</b>	<b>\$ 3,494,850.73</b>	<b>685,906,769</b>	<b>\$ 5,995,816.44</b>	<b>\$ 3,560,921.13</b>	

1/ Assessment increased from \$0.07/cwt to \$0.10/cwt on Class I producer milk beginning November 1, 2005.

2/ Difference between Assessments and Dollars Paid is accounted for by accrued interest and audit adjustments.



**SOUTHEAST MARKETING AREA  
FEDERAL ORDER NO. 7  
2005 POOL HANDLERS**

**Fluid Milk Distributing Pool Plants §1007.7(a)(b)(e)**

	J	F	M	A	M	J	J	A	S	O	N	D
* Barber Pure Milk Company Birmingham, Alabama	X	X	X	X	X	X	X	X	X	X	X	X
Borden Milk Products, LLC Lafayette, Louisiana	X	X	X	X	X	X	X	X	X	X	X	X
Brown's Dairy New Orleans, Louisiana	X	X	X	X	X	X	X	X	Temporary Closure		X	X
Centennial Farms Dairy Atlanta, Georgia	X	X	X	X	X	X	X	X	X	X	X	X
Country Delite Farms Nashville, Tennessee	X	X	X	X	X	X	X	X	X	X	X	X
Dairy Fresh of Alabama, LLC Cowarts, Alabama	X	X	X	X	X	X	X	X	X	X	X	X
Dairy Fresh of Alabama, LLC Hattiesburg, Mississippi	X	X	X	X	X	X	X	X	X	X	X	X
Dairy Fresh of Alabama, LLC Prichard, Alabama	X	X	X	X	X	X	X	X	X	X	X	X
Dairy Fresh of Louisiana, LLC Baker, Louisiana	X	X	X	X	X	X	X	X	X	X	X	X
Flagship Atlanta Dairy, LLC Atlanta, Georgia	Name changed from New Atlanta Dairy Trust				X	X	X	X	X	X	X	X
Foremost Dairy, Inc. Shreveport, Louisiana	X	X	X	X	X	X	X	X	X	X	X	X
Heritage Farms Dairy Murfreesboro, Tennessee	X	X	X	X	X	X	X	X	X	X	X	X
Hiland Dairy Fayetteville, Arkansas	X	X	X	X	X	X	X	X	X	X	X	X
Hiland Dairy Fort Smith, Arkansas	X	X	X	X	X	X	X	X	X	X	X	X
Hiland Dairy Springfield, Missouri	X	X	X	X	X	X	X	X	X	X	X	X
Kleinpeter Dairy Farms Baton Rouge, Louisiana	X	X	X	X	X	X	X	X	X	X	X	X

	J	F	M	A	M	J	J	A	S	O	N	D
LuVel Dairy Products, Inc. Kosciusko, Mississippi	X	X	X	X	X	X	X	X	X	X	X	X
Mayfield Dairy Farms, Inc. Braselton, Georgia	X	X	X	X	X	X	X	X	X	X	X	X
Morningstar Foods dba Milk Prod Decatur, Alabama	X	X	X	X	X	X	X	X	X	X	X	X
Morningstar Foods Murray, Kentucky	X	X	X	X	X	X	X	X	X	X	X	X
New Atlanta Trust Dairy Atlanta, Georgia	X	X	X	Name changed to Flagship Atlanta Dairy								
Pet Dairies Baxley, Georgia	X	X	X	X	X	X	X	X	X	X	X	X
Publix Supermarkets, Inc. Lawrenceville, Georgia	X	X	X	X	X	X	X	X	X	X	X	X
Purity Dairies, Inc. Nashville, Tennessee	X	X	X	X	X	X	X	X	X	X	X	X
Turner/Coleman Dairy Little Rock, Arkansas	X	X	X	X	X	X	X	X	X	X	X	X
Turner Holdings, LLC Covington, Tennessee	X	X	X	X	X	X	X	X	X	X	X	X
Turner Holdings, LLC Fulton, Kentucky	X	X	X	X	X	X	X	X	X	X	X	X
Turner Holdings, LLC Memphis, Tennessee	X	X	X	X	X	X	X	X	X	X	X	X
Winn-Dixie Stores, Inc. Hammond, Louisiana	X	Name changed to Winn-Dixie Trust Stores										
Winn-Dixie Stores, Inc. Montgomery, Alabama	X	Name changed to Winn-Dixie Trust Stores										
Winn-Dixie Trust Stores Hammond, Louisiana		X	X	X	X	X	X	X	X	X	X	X
Winn-Dixie Trust Stores Montgomery, Alabama		X	X	X	X	X	X	X	X	Plant Cosed		



J	F	M	A	M	J	J	A	S	O	N	D
---	---	---	---	---	---	---	---	---	---	---	---

**Pool Supply Plants §1007.7(c) and/or §1007.7(d)**

Arkansas Dairy Receiving Station Damascus, Arkansas								X			
Dairy Farmers of America, Inc. Cabool, Missouri	X	X	X	X	X	X	X	X	X	X	X
Dairy Farmers of America, Inc. Franklinton, Louisiana	X	X	X	X	X	X	X	X		X	X
Dairy Farmers of America, Inc. Monet, Missouri	X	X	X	X	X	X	X	X	X	X	X

**Cooperatives Qualifying as Pool Handlers §1000.9(c)**

	J	F	M	A	M	J	J	A	S	O	N	D
Dairy Farmers of America, Inc. Kansas City, Missouri	X	X	X	X	X	X	X	X	X	X	X	X
Dairymens Marketing Cooperative Mountain Grove, Missouri	X	X	X	X	X	X	X	X	X	X	X	X
Lone Star Milk Producers, Inc. Windthorst, Texas	X	X	X	X	X	X	X	X	X	X	X	X
Maryland/Virginia Milk Producers Reston, Virginia	X	X	X	X	X	X	X	X	X	X	X	X
Michigan Milk Producers Novi, Michigan								X				
National Farmers Organization Minster, Ohio	X	X	X	X	X	X	X	X	X	X	X	X
Select Milk Producers Artesia, New Mexico	X	X	X	X	X	X	X	X	X	X	X	X
Southeast Milk, Inc. Bellevue, Florida	X	X	X	X	X	X	X	X	X	X	X	X
White Eagle Cooperative Assoc South Bend, Indiana									X	X	X	
Zia Milk Producers, Inc. Roswell, New Mexico			X	X	X	X	X	X	X	X	X	X

**SOUTHEAST MARKETING AREA  
FEDERAL ORDER NO. 7  
NONPOOL PLANTS WITH ROUTE DISPOSITION IN THE AREA - 2005**

**Other Order Plants §1000.8(a)**

* Federal Order # 1	J	F	M	A	M	J	J	A	S	O	N	D
H.P. Hood, Inc. Oneida, New York	X	X	X	X	X	X	X	X	X	X	X	X
H.P. Hood, Inc. Winchester, Virginia	X	X	X	X	X	X	X	X	X	X	X	X
Morningstar Foods Fraser, New York	X	X	X									
Morningstar Foods Mount Crawford, Virginia	X	X	X	X	X	X	X	X	X	X	Changed to FO 5	
Steuben Foods Elma, New York	X	X	X	X	X	X	X	X	X	X	X	X
Tuscan/Lehigh Valley Dairies Union, New Jersey	X	X					X		X	X	X	

**Federal Order #5**

Chattanooga Dairy Chattanooga, Tennessee	X	X	X	X	X	X	X	X	X	X	X	X
Coburg Dairy, Inc. Charleston, South Carolina	X	X	X	X	X	X	X	X	X	X	X	X
Dean Foods Louisville, Kentucky	X	X	X	X	X	X	X	X	X	X	X	X
Flav-O-Rich, Inc. Florence, South Carolina	X	X	X	X	X	X	X	X	X	X	X	X
Flav-O-Rich, Inc. London, Kentucky	X	X	X	X	X	X	X	X	X	X	X	X
Hunter Jersey Farms High Point, North Carolina	X	X	X	X	X	X	X	X	X	X	X	X
Land-O-Sun Kingsport, Tennessee	X	X	X	X	X	X	X	X	X	X	X	X
Land-O-Sun Spartanburg, South Carolina	X	X	X	X	X	X	X	X	X	X	X	X

	J	F	M	A	M	J	J	A	S	O	N	D
Mayfield Dairy Farms, Inc. Athens, Tennessee	X	X	X	X	X	X	X	X	X	X	X	X
Milkco, Inc. Asheville, North Carolina	X	X	X	X	X	X	X	X	X	X	X	X
* Morningstar Foods Mount Crawford, Virginia	Changed from FO 1										X	X
Regis Milk Company Charleston, South Carolina	X	X	X	X	X	X	X	X	X	X	X	X
Southern Belle Dairy, Inc. Somerset, Kentucky	X	X	X	X	X	X	X	X	X	X	X	X
U.C. Milk Company Madisonville, Kentucky	X	X	X	X	X	X	X	X	X	X	X	X
Westover Dairy Lynchburg, Virginia	X	X	X	X	X	X	X	X	X	X	X	X
Winn-Dixie Stores, Inc. Greenville, South Carolina	X	Name changed to Winn-Dixie Trust Stores										
Winn-Dixie Stores, Inc. High Point, North Carolina	X	Name changed to Winn-Dixie Trust Stores										
Winn-Dixie Trust Stores Greenville, South Carolina		X	X	X	X	X	X			Plant Closed		
Winn-Dixie Trust Stores High Point, North Carolina		X	X	X	X	X	X		Plant Closed			

**Federal Order #6**

Gustafson's LLC Green Cove, Florida			X	X	X	X	X	X	X	X	X	X
Morningstar Foods Jacksonville, Florida	X	X	X	Plant renamed White Wave Foods								
Publix Supermarkets, Inc. Lakeland, Florida	X	X	X	X	X	X	X	X	X	X	X	X
White Wave Foods Jacksonville, Florida											X	X
Winn-Dixie Trust Stores Greenville, South Carolina								X	Plant Closed			
Winn-Dixie Trust Stores Plant City, Florida									X	X	X	X

J	F	M	A	M	J	J	A	S	O	N	D
---	---	---	---	---	---	---	---	---	---	---	---

**Federal Order #30**

Dean Foods Woodbury, Minnesota	X	X	X								
Lifeway Foods, Inc. Morton Grove, Illinois		X	X	X	X	X	X	X		X	X
Pride of Main Street Dairy, LLC Sauk Centre, Minnesota	X	X	X	X	X	X	X	X	X	X	X
Schroeder Milk Company, Inc. Maplewood, Minnesota	X	X	X	X	X	X	X	X	X	X	X

**Federal Order #32**

Borden Dairy, Inc. Tulsa, Oklahoma	X	X	X	X	X	X	X	X	X	X	X
Chester Dairy Company Chester, Illinois	X	X	X	X	X	X	X	X	X	X	X
Farmers All Natural Creamery Wellman, IA											X
Jackson Ice Cream Company Hutchinson, Kansas	X	X	X	X	X	X	X	X	X	X	X
Mid States Dairy, Inc. Hazelwood, Missouri	X	X	X	X	X	X	X	X	X	X	X
Pet O'Fallon, LLC O'Fallon, Illinois	X	X	X	X	X	X	X	X	X	X	X
Pevely Dairy Company St. Louis, Missouri	X	X	X	X	X	X	X	X	X	X	X
Prairie Farms Dairy, Inc. Carlinville, IL	X	X	X	X	X	X	X	X	X	X	X
Prairie Farms Dairy, Inc. Granite City, Illinois	X	X	X	X	X	X	X	X	X	X	X
Prairie Farms Dairy, Inc. Olney, Illinois	X	X	X	X	X	X	X	X	X	X	X

**Federal Order #33**

Crossroads Farms Indianapolis, Indiana	X	X	X	X	X	X	X	X	X	X	X
Marburger Farm Dairy Evans City Pennsylvania								X	X	X	X

	J	F	M	A	M	J	J	A	S	O	N	D
Parmalat White Knight Pkging Wyoming, Michigan	X	X	X	X	X	X	X	X	X	X	X	X

**Federal Order #126**

Borden Milk Products, LLC Dallas, Texas	X	X	X	X	X	X	X	X	X	X	X	X
Morningstar Foods Sulphur Springs, Texas	X	X	X	X	X	X	X	X	X	X	X	X
Oak Farms Dallas, Texas	X	X	X	X	X	X	X	X	X	X	X	X
Oak Farms Houston, Texas											X	
Oak Farms San Antonio, Texas										X		X
Promised Land Dairy Floresville, Texas	X	X	X	X	X	X	X	X	X	X	X	X
Southwest Dairy Tyler, Texas	X	X	X	X	X	X	X	X	X	X	X	X
Vandervoort Dairy Fort Worth, Texas	X	X	X	X	X	X	X	X	X	X	X	X
Western Quality Foods Cedar City, Utah	X	X	X	X		X	X	X		X		X

**Federal Order #131**

Shamrock Foods Company Phoenix, Arizona		X	X		X	X	X	X	X	X		X
--	--	---	---	--	---	---	---	---	---	---	--	---

**Exempt Distributing Plants §1000.8(e)**

California Natural Products Savannah, Georgia							X	X			X	
College of the Ozarks Point Lookout, Missouri	X	X	X	X	X	X	X	X	X	X	X	X
Etowah Maid Dairies, Inc. Canton, Georgia	X	X	X	X	X	X	X	X	X	X	X	X
Humphrey's Dairy Hot Springs, Arkansas	X	X	X	X	X	X	X	X	X	X	X	X

	J	F	M	A	M	J	J	A	S	O	N	D
Louisiana Tech University Ruston, Louisiana	X	X	X	X	X	X	X	X	X	X	X	X
Mauthe's Dairy, LLC Folsom, Louisiana	X	X	X	X	X	X	X	X	X	X	X	X
Memory Lane Dairy Fordland, Missouri	X	X	X	X	X	X	X	X	X	X	X	X
Mississippi State University Starkville, Mississippi	X	X	X	X	X	X	X	X	X	X	X	X
Mountain Springs Creamery Marshall, Arkansas	X	X	X	X	X	X	X	X	X	X	X	X
Rock Springs Dairy Wildersville, Tennessee	X	X	X	X	X	X	X	X	X	X	X	X
Smith Creamery, LLC Mt. Hermon, Louisiana	X	X	X	X	X	X	X	X	X	X	X	X
Wright Dairy, LLC Alexandria, Alabama	X	X	X	X	X	X	X	X	X	X	X	X

**Partially Regulated Distributing Plants §1000.8(c)**

Cacique, Inc. City of Industry, California	X	X	X	X	X	X	X	X	X	X	X	X
Dannon Milk Products Fort Worth, Texas	X	X	X	X	X	X	X	X	X	X	X	X
Dannon Milk Products Minster, Ohio								X	X	X	X	
Dannon Milk Products West Jordan, Utah	X	X	X	X	X	X	X	X	X	X	X	X
Gossner Foods, Inc. Logan, Utah	X	X	X	X	X	X	X	X	X	X	X	X
Jasper Products, LLC Joplin, Missouri	X	X	X	X	X	X	X	X	X	X	X	X
Kohler Mix Specialties, Inc. White Bear Lake, Minnesota	X	X	X	X	X	X	X	X	X	X	X	X
Lifeway Foods, Inc. Morton Grove, Illinois	X								X			
WestFarms Foods, Inc. Fruitland, Idaho	X	X	X	X	X	X	X	X	X	X	X	X

Western Quality Foods  
Cedar City, Utah

J	F	M	A	M	J	J	A	S	O	N	D
								X		X	
Name changed from Morningstar Foods									X		

White Wave Foods  
Jacksonville, FL

**Producer-Handler Plants §1000.8(b)**

Aurora Organic Dairy  
Platteville, Colorado

X	X	X	X	X	X	X	X	X	X	X	X
X	X	X	X	X	X	X	X	X	X	Closed	
X	X	X	X	X	X	X	X	X	X	X	X

Martin Dairy, Inc.  
Humansville, Missouri

W.H. Braum, Inc.  
Tuttle, Oklahoma

