

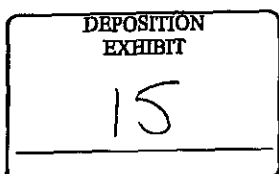
BEFORE THE UNITED STATES DEPARTMENT
OF AGRICULTURE
AGRICULTURAL MARKETING SERVICE

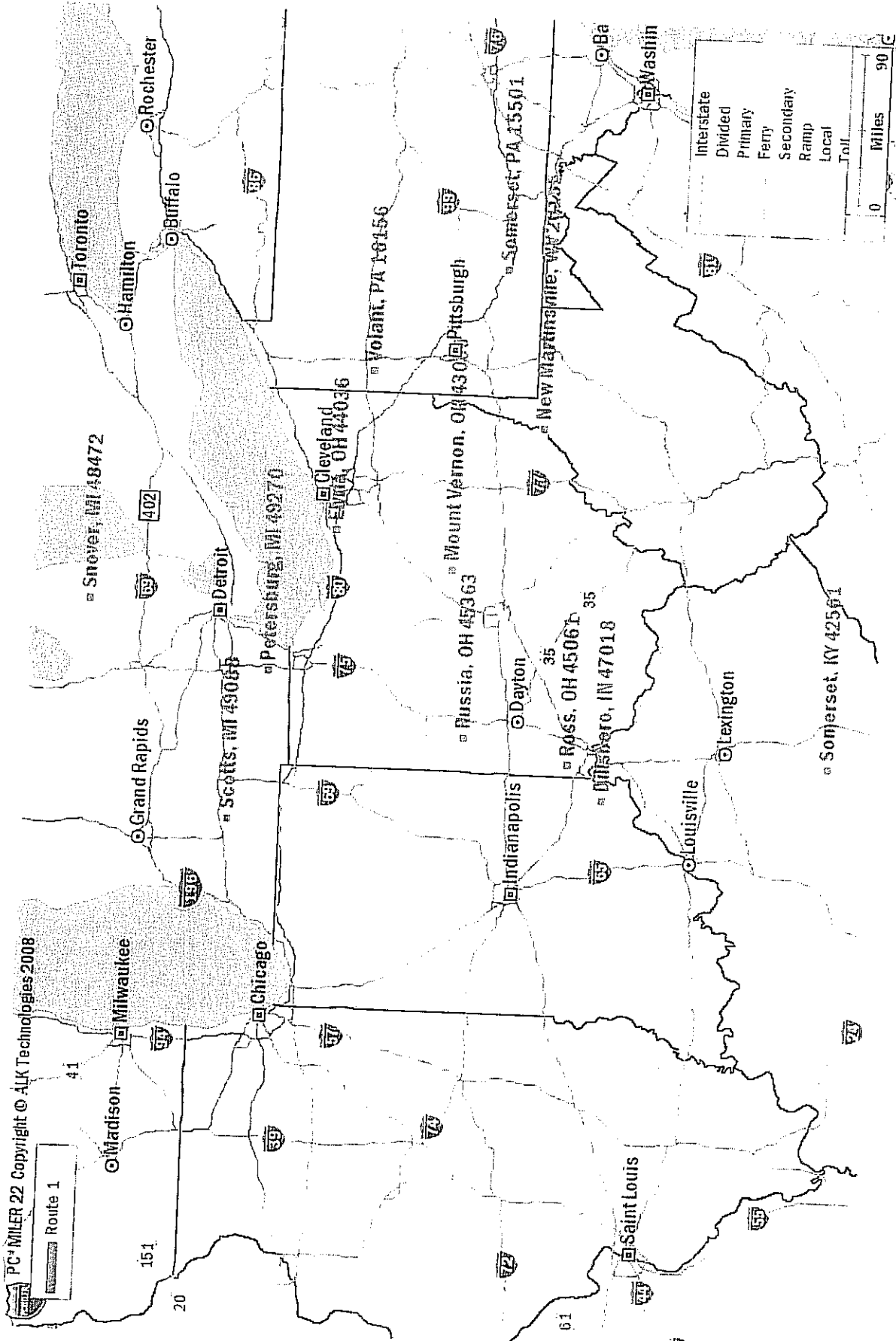
In the Matter of : Docket Nos.
:
Milk In The Mideast : AO- 166-A77;
:
Marketing Area : DA-08-09

MAPS, CHARTS, TABLES, AND RELATED DATA SUBMITTED
ON BEHALF OF PROPONENTS IN SUPPORT OF PROPOSAL 1

August 19, 2008
Cincinnati, Ohio

EXHIBIT 15





Hauler Name: Consun Food 5053 Elyria, Ohio

Route Nos: 53

CP: 41.199n,-82.231w

3-May

36 MILES	\$2.20 PER LOADED MILE (ONE WAY)	45,000 AVERAGE PAYLOAD
-------------	---	------------------------------

NO.	HANDLER	ZIP	ACTUAL ROAD MILAGE TO HANDLER	LESS 36 MILES	TOTAL DOLLARS PER LOAD	RATE PER CWT.
0093	HOLMES CHEESE	44654	58.2	22.2	\$48.84	\$0.109
0095	SMITH	44667	45.2	9.2	\$20.24	\$0.045
0191	KRAFT-FARMDALE	44417	99.1	63.1	\$138.82	\$0.308
2212	DAIRYMEN	44111	32.9	0.0	\$0.00	\$0.000
3301	BREWSTER	44613	63.4	27.4	\$60.28	\$0.134
3394	MIDDLEFIELD	44062	76.0	40.0	\$88.00	\$0.196
3397	MINERVA	44657	87.9	51.9	\$114.18	\$0.254
3412	BROUGHTON	45750	156.9	120.9	\$265.98	\$0.591
3950	VALLEY BELL CHARLESTON V	25302	243.0	207.0	\$455.40	\$1.012
5076	TURNER DAIRY	15235	175.3	139.3	\$306.46	\$0.686
8003	SUPERIOR	44708	71.3	35.3	\$77.66	\$0.173
8006	CONSUN FOODS	44035	15.3	0.0	\$0.00	\$0.000
8008	DEANS - SHARPSVILLE	16150	103.2	67.2	\$147.84	\$0.334
8009	DFA-GOSHEN	46526	205.9	169.9	\$373.78	\$0.831
8049	DFA-NEW WILMINGTON	16142	110.8	74.8	\$164.56	\$0.371
8054	MICELI CHEESE	44104	43.3	7.3	\$16.06	\$0.036
8072	UNITED DAIRY MARTIN FERR	43935	131.4	95.4	\$209.88	\$0.466
8084	FIKE	15401	209.0	173.0	\$380.60	\$0.851
8096	ALPINE CHEESE	44690	64.2	28.2	\$62.04	\$0.138
8114	TAMARACK	43055	94.4	58.4	\$128.48	\$0.286
8125	MEADOWBROOK	16510	146.8	110.8	\$243.76	\$0.547
8606	MARBURGER	16033	142.8	106.8	\$234.96	\$0.527
8607	SCHNEIDERS DAIRY	15227	170.1	134.1	\$295.02	\$0.656

Jun-03

Hauler Name: Consun Food 5053 Elyria, Ohio

Route Nos: 53

CP: 41.199n,-82.231w

36 MILES	\$2.20 PER LOADED MILE (ONE WAY)	45,000 AVERAGE PAYLOAD
-------------	---	------------------------------

NO.	HANDLER	ZIP	ACTUAL ROAD MILAGE TO HANDLER	LESS 36 MILES	TOTAL DOLLARS PER LOAD	RATE PER CWT.
0093	HOLMES CHEESE	44654	58.2	22.2	\$48.84	\$0.109
0095	SMITH	44667	45.2	9.2	\$20.24	\$0.045
0191	KRAFT-FARMDALE	44417	99.1	63.1	\$138.82	\$0.308
2212	DAIRYMEN	44111	32.9	0.0	\$0.00	\$0.000
3301	BREWSTER	44613	63.4	27.4	\$60.28	\$0.134
3394	MIDDLEFIELD	44062	76.0	40.0	\$88.00	\$0.196
3397	MINERVA	44657	87.9	51.9	\$114.18	\$0.254
3412	BROUGHTON	45750	156.9	120.9	\$265.98	\$0.591
3950	VALLEY BELL CHARLESTON V	25302	243.0	207.0	\$455.40	\$1.012
5076	TURNER DAIRY	15235	175.3	139.3	\$306.46	\$0.686
8003	SUPERIOR	44708	71.3	35.3	\$77.66	\$0.173
8006	CONSUN FOODS	44035	15.3	0.0	\$0.00	\$0.000
8008	DEANS - SHARPSVILLE	16150	103.2	67.2	\$147.84	\$0.334
8009	DFA-GOSHEN	46526	205.9	169.9	\$373.78	\$0.831
8049	DFA-NEW WILMINGTON	16142	110.8	74.8	\$164.56	\$0.371
8054	MICELI CHEESE	44104	43.3	7.3	\$16.06	\$0.036
8072	UNITED DAIRY MARTIN FERR'	43935	131.4	95.4	\$209.88	\$0.466
8084	FIKE	15401	209.0	173.0	\$380.60	\$0.851
8096	ALPINE CHEESE	44690	64.2	28.2	\$62.04	\$0.138
8114	TAMARACK	43055	94.4	58.4	\$128.48	\$0.286
8125	MEADOWBROOK	16510	146.8	110.8	\$243.76	\$0.547
8606	MARBURGER	16033	142.8	106.8	\$234.96	\$0.527
8607	SCHNEIDERS DAIRY	15227	170.1	134.1	\$295.02	\$0.656

Jul-03

Hauler Name: Consun Food 5053 Elyria, Ohio

Route Nos: 53

36 MILES	\$2.20 PER LOADED MILE (ONE WAY)	45,000 AVERAGE PAYLOAD
-------------	---	------------------------------

CP: 41.199n,-82.231w

NO.	HANDLER	ZIP	ACTUAL ROAD MILAGE TO HANDLER	LESS		
				36 MILES	TOTAL DOLLARS PER LOAD	RATE PER CWT.
0093	HOLMES CHEESE	44654	58.2	22.2	\$48.84	\$0.109
0095	SMITH	44667	45.2	9.2	\$20.24	\$0.045
0191	KRAFT-FARMDALE	44417	99.1	63.1	\$138.82	\$0.308
2212	DAIRYMEN	44111	32.9	0.0	\$0.00	\$0.000
3301	BREWSTER	44613	63.4	27.4	\$60.28	\$0.134
3394	MIDDLEFIELD	44062	76.0	40.0	\$88.00	\$0.196
3397	MINERVA	44657	87.9	51.9	\$114.18	\$0.254
3412	BROUGHTON	45750	156.9	120.9	\$265.98	\$0.591
3950	VALLEY BELL CHARLESTON V	25302	243.0	207.0	\$455.40	\$1.012
5076	TURNER DAIRY	15235	175.3	139.3	\$306.46	\$0.686
8003	SUPERIOR	44708	71.3	35.3	\$77.66	\$0.173
8006	CONSUN FOODS	44035	15.3	0.0	\$0.00	\$0.000
8008	DEANS - SHARPSVILLE	16150	103.2	67.2	\$147.84	\$0.334
8009	DFA-GOSHEN	46526	205.9	169.9	\$373.78	\$0.831
8049	DFA-NEW WILMINGTON	16142	110.8	74.8	\$164.56	\$0.371
8054	MICELI CHEESE	44104	43.3	7.3	\$16.06	\$0.036
8072	UNITED DAIRY MARTIN FERR'	43935	131.4	95.4	\$209.88	\$0.486
8084	FIKE	15401	209.0	173.0	\$380.60	\$0.851
8096	ALPINE CHEESE	44690	64.2	28.2	\$62.04	\$0.138
8114	TAMARACK	43055	94.4	58.4	\$128.48	\$0.286
8125	MEADOWBROOK	16510	146.8	110.8	\$243.76	\$0.547
8606	MARBURGER	16033	142.8	106.8	\$234.96	\$0.527
8607	SCHNEIDERS DAIRY	15227	170.1	134.1	\$295.02	\$0.656

Jun-03

Hauler Name: John McCann 5490 Mount Vernon, OH

Route Nos: 490
CP 40.376n,82.483w

36 MILES	\$2.20 PER LOADED MILE (ONE WAY)	45,000 AVERAGE PAYLOAD
-------------	---	------------------------------

NO.	HANDLER	ZIP	ACTUAL ROAD MILAGE TO HANDLER	LESS 36 MILES	TOTAL DOLLARS PER LOAD	RATE PER CWT.
0093	HOLMES CHEESE	44654	40.8	4.8	\$10.56	\$0.023
0095	SMITH	44667	56.5	20.5	\$45.10	\$0.100
0445	DANNON	45865	117.1	81.1	\$178.42	\$0.396
2212	DAIRYMEN	44111	99.6	63.6	\$139.92	\$0.311
3301	BREWSTER	44613	65.2	29.2	\$64.24	\$0.143
3394	MIDDLEFIELD	44062	297.5	261.5	\$575.30	\$1.278
3397	MINERVA	44657	93.5	57.5	\$126.50	\$0.281
3412	BROUGHTON	45750	113.7	77.7	\$170.94	\$0.380
3950	VALLEY BELL CHARLEST	25302	199.7	163.7	\$360.14	\$0.800
8003	SUPERIOR	44708	76.1	40.1	\$88.22	\$0.196
8006	CONSUN FOODS	44035	81.9	45.9	\$100.98	\$0.224
8008	DEANS - SHARPSVILLE	16150	147.6	111.6	\$245.52	\$0.551
8009	DFA-GOSHEN	46526	225.3	189.3	\$416.46	\$0.925
8049	DFA-NEW WILMINGTON	16142	155.2	119.2	\$262.24	\$0.588
8054	MICELI CHEESE	44104	107.6	71.6	\$157.52	\$0.350
8072	UNITED DAIRY MARTIN F	43935	117.6	81.6	\$179.52	\$0.399
8084	UNITED UNIONTOWN	15401	186.2	150.2	\$330.44	\$0.739
8096	ALPINE CHEESE	44690	54.1	18.1	\$39.82	\$0.088
8114	TAMARACK	43055	24.9	0.0	\$0.00	\$0.000
8125	MEADOWBROOK	16510	206.6	170.6	\$375.32	\$0.839

May-03

Hauler Name: John McCann 5490 Mount Vernon, OH

Route Nos: 490
CP 40.376n,82.483w

36 MILES	\$2.20 PER LOADED MILE (ONE WAY)	45,000 AVERAGE PAYLOAD
-------------	---	------------------------------

NO.	HANDLER	ZIP	ACTUAL ROAD MILAGE TO HANDLER	LESS 36 MILES	TOTAL DOLLARS PER LOAD	RATE PER CWT.
0093	HOLMES CHEESE	44654	40.8	4.8	\$10.56	\$0.023
0095	SMITH	44667	56.5	20.5	\$45.10	\$0.100
0445	DANNON	45865	117.1	81.1	\$178.42	\$0.396
2212	DAIRYMEN	44111	99.6	63.6	\$139.92	\$0.311
3301	BREWSTER	44613	65.2	29.2	\$64.24	\$0.143
3394	MIDDLEFIELD	44062	297.5	261.5	\$575.30	\$1.278
3397	MINERVA	44657	93.5	57.5	\$126.50	\$0.281
3412	BROUGHTON	45750	113.7	77.7	\$170.94	\$0.380
3950	VALLEY BELL CHARLEST	25302	199.7	163.7	\$360.14	\$0.800
8003	SUPERIOR	44708	76.1	40.1	\$88.22	\$0.196
8006	CONSUN FOODS	44035	81.9	45.9	\$100.98	\$0.224
8008	DEANS - SHARPSVILLE	16150	147.6	111.6	\$245.52	\$0.551
8009	DFA-GOSHEN	46526	225.3	189.3	\$416.46	\$0.925
8049	DFA-NEW WILMINGTON	16142	155.2	119.2	\$262.24	\$0.588
8054	MICELI CHEESE	44104	107.6	71.6	\$157.52	\$0.350
8072	UNITED DAIRY MARTIN F	43935	117.6	81.6	\$179.52	\$0.399
8084	UNITED UNIONTOWN	15401	186.2	150.2	\$330.44	\$0.739
8096	ALPINE CHEESE	44690	54.1	18.1	\$39.82	\$0.088
8114	TAMARACK	43055	24.9	0.0	\$0.00	\$0.000
8125	MEADOWBROOK	16510	206.6	170.6	\$375.32	\$0.839

Jul-03

Hauler Name: John McCann 5490 Mount Vernon, OH

Route Nos: 490
CP 40.376n,82.483w

36 MILES	\$2.20 PER LOADED MILE (ONE WAY)	45,000 AVERAGE PAYLOAD
-------------	---	------------------------------

NO.	HANDLER	ZIP	ACTUAL ROAD MILAGE TO HANDLER	LESS 36 MILES	TOTAL DOLLARS PER LOAD	RATE PER CWT.
0093	HOLMES CHEESE	44654	40.8	4.8	\$10.56	\$0.023
0095	SMITH	44667	56.5	20.5	\$45.10	\$0.100
0445	DANNON	45865	117.1	81.1	\$178.42	\$0.396
2212	DAIRYMEN	44111	99.6	63.6	\$139.92	\$0.311
3301	BREWSTER	44613	65.2	29.2	\$64.24	\$0.143
3394	MIDDLEFIELD	44062	297.5	261.5	\$575.30	\$1.278
3397	MINERVA	44657	93.5	57.5	\$126.50	\$0.281
3412	BROUGHTON	45750	113.7	77.7	\$170.94	\$0.380
3950	VALLEY BELL CHARLEST	25302	199.7	163.7	\$360.14	\$0.800
8003	SUPERIOR	44708	76.1	40.1	\$88.22	\$0.196
8006	CONSUN FOODS	44035	81.9	45.9	\$100.98	\$0.224
8008	DEANS - SHARPSVILLE	16150	147.6	111.6	\$245.52	\$0.551
8009	DFA-GOSHEN	46526	225.3	189.3	\$416.46	\$0.925
8049	DFA-NEW WILMINGTON	16142	155.2	119.2	\$262.24	\$0.588
8054	MICELI CHEESE	44104	107.6	71.6	\$157.52	\$0.350
8072	UNITED DAIRY MARTIN F	43935	117.6	81.6	\$179.52	\$0.399
8084	UNITED UNIONTOWN	15401	186.2	150.2	\$330.44	\$0.739
8096	ALPINE CHEESE	44690	54.1	18.1	\$39.82	\$0.088
8114	TAMARACK	43055	24.9	0.0	\$0.00	\$0.000
8125	MEADOWBROOK	16510	206.6	170.6	\$375.32	\$0.839

4502

May-03

Hauler Name: Schafer Dairy Farm Russia, OH

Route Nos: 308
40.129n,83.338w

36	\$2.20	45,000
ACTUAL ROAD MILAGE FROM	PER LOADED MILE (ONE WAY)	AVERAGE PAYLOAD

NO.	HANDLER	ZIP	ACTUAL ROAD		TOTAL DOLLARS PER LOAD	RATE PER CWT.
			MILAGE TO HANDLER	TO HANDLER LESS 36 MILES		
0093	Holmes Cheese	44654	99.9	63.9	\$140.58	\$0.312
0095	Smith	44667	188.4	152.4	\$335.28	\$0.745
0214	Trauth	41071	116.1	80.1	\$176.22	\$0.392
0224	UDF	45212	111.8	75.8	\$166.76	\$0.371
0230	Wayne	47374	93.6	57.6	\$126.72	\$0.282
0288	Best Ever - Prairie Farms	46015	155	119.0	\$261.80	\$0.582
0445	Dannon	45865	75	39.0	\$85.80	\$0.191
2217	Meyer Dairy	45215	101.3	65.3	\$143.66	\$0.319
3075	DFA-Louisville	40218	213	177.0	\$389.40	\$0.865
3104	Flav-O-Rich	40741	264.1	228.1	\$501.82	\$1.115
3301	Brewster	44613	128.5	92.5	\$203.50	\$0.452
3445	Reiter -Springfield	45504	36.3	0.3	\$0.66	\$0.001
3446	Sunshine Biscuit	43420	107.4	71.4	\$157.08	\$0.349
3633	Kroger-Winchester	40392	205.5	169.5	\$372.90	\$0.829
5514	Deans Louisville	40218	213	177.0	\$389.40	\$0.865
8009	DFA-Goshen	46526	197.7	161.7	\$355.74	\$0.791
8031	Toft	44871	109.2	73.2	\$161.04	\$0.358
8049	DFA-New Wilmington	16142	204.2	168.2	\$370.04	\$0.822
8091	Southern Belle	42502	268.6	232.6	\$511.72	\$1.137
8109	Kroger-Springdale	45246	100.5	64.5	\$141.90	\$0.315
8113	Kroger Crossroad	46219	157.5	121.5	\$267.30	\$0.594
8114	Kroger Tamarack	43058	53.2	17.2	\$37.84	\$0.084
8202	Spray Dry	42141	306.6	270.6	\$595.32	\$1.323
8345	DKH	46540	202.3	166.3	\$365.86	\$0.813

Exhibit The Cooperatives

4502

Jun-03

Hauler Name: Schafer Dairy Farm Russia, OH

Route Nos: 308

40.129n,83.338w

36	\$2.20	45,000
ACTUAL ROAD MILAGE FROM	PER LOADED MILE (ONE WAY)	AVERAGE PAYLOAD

NO.	HANDLER	ZIP	ACTUAL ROAD		TOTAL DOLLARS PER LOAD	RATE PER CWT.
			MILAGE TO HANDLER	TO HANDLER LESS 36 MILES		
0093	Holmes Cheese	44654	99.9	63.9	\$140.58	\$0.312
0095	Smith	44667	188.4	152.4	\$335.28	\$0.745
0214	Trauth	41071	116.1	80.1	\$176.22	\$0.392
0224	UDF	45212	111.8	75.8	\$166.76	\$0.371
0230	Wayne	47374	93.6	57.6	\$126.72	\$0.282
0288	Best Ever - Prairie Farms	46015	155	119.0	\$261.80	\$0.582
0445	Dannon	45865	75	39.0	\$85.80	\$0.191
2217	Meyer Dairy	45215	101.3	65.3	\$143.66	\$0.319
3075	DFA-Louisville	40218	213	177.0	\$389.40	\$0.865
3104	Flav-O-Rich	40741	264.1	228.1	\$501.82	\$1.115
3301	Brewster	44613	128.5	92.5	\$203.50	\$0.452
3445	Reiter -Springfield	45504	36.3	0.3	\$0.66	\$0.001
3446	Sunshine Biscuit	43420	107.4	71.4	\$157.08	\$0.349
3633	Kroger-Winchester	40392	205.5	169.5	\$372.90	\$0.829
5514	Deans Louisville	40218	213	177.0	\$389.40	\$0.865
8009	DFA-Goshen	46526	197.7	161.7	\$355.74	\$0.791
8031	Toft	44871	109.2	73.2	\$161.04	\$0.358
8049	DFA-New Wilmington	16142	204.2	168.2	\$370.04	\$0.822
8091	Southern Belle	42502	268.6	232.6	\$511.72	\$1.137
8109	Kroger-Springdale	45246	100.5	64.5	\$141.90	\$0.315
8113	Kroger Crossroad	46219	157.5	121.5	\$267.30	\$0.594
8114	Kroger Tamarack	43058	53.2	17.2	\$37.84	\$0.084
8202	Spray Dry	42141	306.6	270.6	\$595.32	\$1.323
8345	DKH	46540	202.3	166.3	\$365.86	\$0.813

4502

Jul-03

Hauler Name: Schafer Dairy Farm Russia, OH

Route Nos: 308
40.129n,83.338w

36	\$2.20	45,000
ACTUAL ROAD MILAGE FROM	PER LOADED MILE (ONE WAY)	AVERAGE PAYLOAD

NO.	HANDLER	ZIP	ACTUAL ROAD		TOTAL DOLLARS PER LOAD	RATE PER CWT.
			MILAGE TO HANDLER	TO HANDLER LESS 36 MILES		
0093	Holmes Cheese	44654	99.9	63.9	\$140.58	\$0.312
0095	Smith	44667	188.4	152.4	\$335.28	\$0.745
0214	Trauth	41071	116.1	80.1	\$176.22	\$0.392
0224	UDF	45212	111.8	75.8	\$166.76	\$0.371
0230	Wayne	47374	93.6	57.6	\$126.72	\$0.282
0288	Best Ever - Prairie Farms	46015	155	119.0	\$261.80	\$0.582
0445	Dannon	45865	75	39.0	\$85.80	\$0.191
2217	Meyer Dairy	45215	101.3	65.3	\$143.66	\$0.319
3075	DFA-Louisville	40218	213	177.0	\$389.40	\$0.865
3104	Flav-O-Rich	40741	264.1	228.1	\$501.82	\$1.115
3301	Brewster	44613	128.5	92.5	\$203.50	\$0.452
3445	Reiter -Springfield	45504	36.3	0.3	\$0.66	\$0.001
3446	Sunshine Biscuit	43420	107.4	71.4	\$157.08	\$0.349
3633	Kroger-Winchester	40392	205.5	169.5	\$372.90	\$0.829
5514	Deans Louisville	40218	213	177.0	\$389.40	\$0.865
8009	DFA-Goshen	46526	197.7	161.7	\$355.74	\$0.791
8031	Toft	44871	109.2	73.2	\$161.04	\$0.358
8049	DFA-New Wilmington	16142	204.2	168.2	\$370.04	\$0.822
8091	Southern Belle	42502	268.6	232.6	\$511.72	\$1.137
8109	Kroger-Springdale	45246	100.5	64.5	\$141.90	\$0.315
8113	Kroger Crossroad	46219	157.5	121.5	\$267.30	\$0.594
8114	Kroger Tamarack	43058	53.2	17.2	\$37.84	\$0.084
8202	Spray Dry	42141	306.6	270.6	\$595.32	\$1.323
8345	DKH	46540	202.3	166.3	\$365.86	\$0.813

May-03

Hauler Name: Jay Neff 5703 New Martinsville, WV

Route Nos: 703

CP 39.772N,80.112W

36 MILES	\$2.20 PER LOADED MILE (ONE WAY)	45,000 AVERAGE PAYLOAD
-------------	---	------------------------------

NO.	HANDLER	ZIP	ACTUAL R MILAGE TO HANDLI	LESS 36 MILES	TOTAL DOLLARS PER LOAD	RATE PER CWT.
0093	HOLMES CHEESE	44654	115.9	79.9	\$175.78	\$0.391
0095	SMITH	44667	126.4	90.4	\$198.88	\$0.442
0543	POLY-O	14821	379.6	343.6	\$755.92	\$1.680
2212	DAIRYMEN	44111	184.5	148.5	\$326.70	\$0.726
3301	BREWSTER	44613	106.9	70.9	\$155.98	\$0.347
3394	MIDDLEFIELD	44062	157.6	121.6	\$267.52	\$0.594
3397	MINERVA	44657	111.1	75.1	\$165.22	\$0.367
3412	BROUGHTON	45750	54.8	18.8	\$41.36	\$0.092
3678	DIETRICHS - MIDDLEBURY	16935	314.0	278.0	\$611.60	\$1.359
3805	FREINDSHIP DAIRY	14739	316.3	280.3	\$616.66	\$1.370
3950	VALLEY BELL CHARLESTON WV	25302	132.3	96.3	\$211.86	\$0.471
5076	TURNER DAIRY	15235	95.5	59.5	\$130.90	\$0.296
8003	SUPERIOR	44708	113.2	77.2	\$169.84	\$0.377
8008	DEANS - SHARPSVILLE	16150	133.9	97.9	\$215.38	\$0.484
8035	PEARL VALLEY	43824	109.7	73.7	\$162.14	\$0.360
8049	DFA-NEW WILMINGTON	16142	122.5	86.5	\$190.30	\$0.428
8054	MICELI CHEESE	44104	180.1	144.1	\$317.02	\$0.704
8072	UNITED DAIRY MARTIN FERRY	43935	30.7	0.0	\$0.00	\$0.000
8084	FIKE	15401	97.1	61.1	\$134.42	\$0.304
8096	ALPINE CHEESE	44690	108.9	72.9	\$160.38	\$0.356
8114	TAMARACK	43055	128.5	92.5	\$203.50	\$0.452
8125	MEADOWBROOK	16510	206.9	170.9	\$375.98	\$0.841
8503	EAGLE FAMILY FOODS	16901	305.5	269.5	\$592.90	\$1.318
8606	MARBURGER	16033	110.7	74.7	\$164.34	\$0.370
8607	SCHNEIDERS DAIRY	15227	88.0	52.0	\$114.40	\$0.259

Jun-03

Hauler Name: Jay Neff 5703 New Martinsville, WV

Route Nos: 703

CP 39.772N,80.112W

36 MILES	\$2.20 PER LOADED MILE (ONE WAY)	45,000 AVERAGE PAYLOAD
-------------	---	------------------------------

NO.	HANDLER	ZIP	ACTUAL ROAD MILAGE TO HANDLER	LESS 36 MILES	TOTAL DOLLARS PER LOAD	RATE PER CWT.
0093	HOLMES CHEESE	44654	115.9	79.9	\$175.78	\$0.391
0095	SMITH	44667	126.4	90.4	\$198.88	\$0.442
0543	POLY-O	14821	379.6	343.6	\$755.92	\$1.680
2212	DAIRYMEN	44111	184.5	148.5	\$326.70	\$0.726
3301	BREWSTER	44613	106.9	70.9	\$155.98	\$0.347
3394	MIDDLEFIELD	44062	157.6	121.6	\$267.52	\$0.594
3397	MINERVA	44657	111.1	75.1	\$165.22	\$0.367
3412	BROUGHTON	45750	54.8	18.8	\$41.36	\$0.092
3678	DIETRICHS - MIDDLEBURY	16935	314.0	278.0	\$611.60	\$1.359
3805	FREINDSHIP DAIRY	14739	316.3	280.3	\$616.66	\$1.370
3950	VALLEY BELL CHARLESTON WV	25302	132.3	96.3	\$211.86	\$0.471
5076	TURNER DAIRY	15235	95.5	59.5	\$130.90	\$0.296
8003	SUPERIOR	44708	113.2	77.2	\$169.84	\$0.377
8008	DEANS - SHARPSVILLE	16150	133.9	97.9	\$215.38	\$0.484
8035	PEARL VALLEY	43824	109.7	73.7	\$162.14	\$0.360
8049	DFA-NEW WILMINGTON	16142	122.5	86.5	\$190.30	\$0.428
8054	MICELI CHEESE	44104	180.1	144.1	\$317.02	\$0.704
8072	UNITED DAIRY MARTIN FERRY	43935	30.7	0.0	\$0.00	\$0.000
8084	FIKE	15401	97.1	61.1	\$134.42	\$0.304
8096	ALPINE CHEESE	44690	108.9	72.9	\$160.38	\$0.356
8114	TAMARACK	43055	128.5	92.5	\$203.50	\$0.452
8125	MEADOWBROOK	16510	206.9	170.9	\$375.98	\$0.841
8503	EAGLE FAMILY FOODS	16901	305.5	269.5	\$592.90	\$1.318
8606	MARBURGER	16033	110.7	74.7	\$164.34	\$0.370
8607	SCHNEIDERS DAIRY	15227	88.0	52.0	\$114.40	\$0.259

Hauler Name: Jay Neff 5703 New Martinsville, WV

Jul-03

Route Nos: 703

36 MILES	\$2.20 PER LOADED MILE (ONE WAY)	45,000 AVERAGE PAYLOAD
-------------	---	------------------------------

CP 39.772N,80.112W

NO.	HANDLER	ZIP	ACTUAL R MILAGE TO HANDLI	LESS 36 MILES	TOTAL DOLLARS PER LOAD	RATE PER CWT.
0093	HOLMES CHEESE	44654	115.9	79.9	\$175.78	\$0.391
0095	SMITH	44667	126.4	90.4	\$198.88	\$0.442
0543	POLY-O	14821	379.6	343.6	\$755.92	\$1.680
2212	DAIRYMEN	44111	184.5	148.5	\$326.70	\$0.726
3301	BREWSTER	44613	106.9	70.9	\$155.98	\$0.347
3394	MIDDLEFIELD	44062	157.6	121.6	\$267.52	\$0.594
3397	MINERVA	44657	111.1	75.1	\$165.22	\$0.367
3412	BROUGHTON	45750	54.8	18.8	\$41.36	\$0.092
3678	DIETRICHS - MIDDLEBURY	16935	314.0	278.0	\$611.60	\$1.359
3805	FREINDSHIP DAIRY	14739	316.3	280.3	\$616.66	\$1.370
3950	VALLEY BELL CHARLESTON WV	25302	132.3	96.3	\$211.86	\$0.471
5076	TURNER DAIRY	15235	95.5	59.5	\$130.90	\$0.296
8003	SUPERIOR	44708	113.2	77.2	\$169.84	\$0.377
8008	DEANS - SHARPSVILLE	16150	133.9	97.9	\$215.38	\$0.484
8035	PEARL VALLEY	43824	109.7	73.7	\$162.14	\$0.360
8049	DFA-NEW WILMINGTON	16142	122.5	86.5	\$190.30	\$0.428
8054	MICELI CHEESE	44104	180.1	144.1	\$317.02	\$0.704
8072	UNITED DAIRY MARTIN FERRY	43935	30.7	0.0	\$0.00	\$0.000
8084	FIKE	15401	97.1	61.1	\$134.42	\$0.304
8096	ALPINE CHEESE	44690	108.9	72.9	\$160.38	\$0.356
8114	TAMARACK	43055	128.5	92.5	\$203.50	\$0.452
8125	MEADOWBROOK	16510	206.9	170.9	\$375.98	\$0.841
8503	EAGLE FAMILY FOODS	16901	305.5	269.5	\$592.90	\$1.318
8606	MARBURGER	16033	110.7	74.7	\$164.34	\$0.370
8607	SCHNEIDERS DAIRY	15227	88.0	52.0	\$114.40	\$0.259

Exhibit The Cooperatives

6902

May-03

Hauler Name: CLIFFORD STUTZMAN Somerset, PA

Route Nos: 903

36 MILES	\$2.20 PER LOADED MILE (ONE WAY)	45,000 AVERAGE PAYLOAD
--------------------	---	------------------------------

CP 40.324n,78.774w

NO.	HANDLER	ZIP	ACTUAL ROAD MILAGE		TOTAL DOLLARS PER LOAD	RATE PER CWT.
			TO HANDLER	LESS 36 MILES		
0093	HOLMES CHEESE	44654	224.0	188.0	\$413.60	\$0.919
0095	SMITH	44667	216.2	180.2	\$396.44	\$0.881
3301	BREWSTER	44613	197.3	161.3	\$354.86	\$0.789
3401	BROUGHTON	45750	231.1	195.1	\$429.22	\$0.954
3950	VALLEY BELL CHARLESTC	25302	267.8	231.8	\$509.96	\$1.133
5076	TURNER DAIRY	15235	93.7	57.7	\$126.94	\$0.282
8003	SUPERIOR	44708	183.2	147.2	\$323.84	\$0.720
8008	DEANS - SHARPSVILLE	16150	136.8	100.8	\$221.76	\$0.493
8009	DFA-GOSHEN	46526	429.9	393.9	\$866.58	\$1.926
8049	DFA-NEW WILMINGTON	16142	119.0	83.0	\$182.60	\$0.406
8072	UNITED DAIRY MARTIN FE	43935	143.2	107.2	\$235.84	\$0.524
8084	UNION - UNIONTOWN	15401	82.2	46.2	\$101.64	\$0.226
8096	ALPINE CHEESE	44690	216.1	180.1	\$396.22	\$0.880
8114	TAMARACK	43055	240.3	204.3	\$449.46	\$0.999
8125	MEADOWBROOK	16510	192.8	156.8	\$344.96	\$0.767
8171	LAND 'O LAKES CARLISLE	17013	124.7	88.7	\$195.14	\$0.434
	COLTERYAHN DAIRY	16033	99.6	63.6	\$139.92	\$0.311
8607	SCHNEIDERS DAIRY	15227	100.0	64.0	\$140.80	\$0.313

6902

Hauler Name: CLIFFORD STUTZMAN Somerset, PA

Jun-03

Route Nos: 903

36 MILES	\$2.20 PER LOADED MILE (ONE WAY)	45,000 AVERAGE PAYLOAD
-------------	---	------------------------------

CP 40.324n,78.774w

NO.	HANDLER	ZIP	ACTUAL ROAD		TOTAL DOLLARS PER LOAD	RATE PER CWT.
			MILAGE TO HANDLER	LESS 36 MILES		
0093	HOLMES CHEESE	44654	224.0	188.0	\$413.60	\$0.919
0095	SMITH	44667	216.2	180.2	\$396.44	\$0.881
3301	BREWSTER	44613	197.3	161.3	\$354.86	\$0.789
3401	BROUGHTON	45750	231.1	195.1	\$429.22	\$0.954
3950	VALLEY BELL CHARLESTC	25302	267.8	231.8	\$509.96	\$1.133
5076	TURNER DAIRY	15235	93.7	57.7	\$126.94	\$0.282
8003	SUPERIOR	44708	183.2	147.2	\$323.84	\$0.720
8008	DEANS - SHARPSVILLE	16150	136.8	100.8	\$221.76	\$0.493
8009	DFA-GOSHEN	46526	429.9	393.9	\$866.58	\$1.926
8049	DFA-NEW WILMINGTON	16142	119.0	83.0	\$182.60	\$0.406
8072	UNITED DAIRY MARTIN FE	43935	143.2	107.2	\$235.84	\$0.524
8084	UNION - UNIONTOWN	15401	82.2	46.2	\$101.64	\$0.226
8096	ALPINE CHEESE	44690	216.1	180.1	\$396.22	\$0.880
8114	TAMARACK	43055	240.3	204.3	\$449.46	\$0.999
8125	MEADOWBROOK	16510	192.8	156.8	\$344.96	\$0.767
8171	LAND 'O LAKES CARLISLE	17013	124.7	88.7	\$195.14	\$0.434
	COLTERYAHN DAIRY	16033	99.6	63.6	\$139.92	\$0.311
8607	SCHNEIDERS DAIRY	15227	100.0	64.0	\$140.80	\$0.313

6902

Hauler Name: CLIFFORD STUTZMAN Somerset, PA

Jul-03

Route Nos: 903

36
MILES\$2.20
PER LOADED
MILE
(ONE WAY)45,000
AVERAGE
PAYLOAD

CP 40.324n,78.774w

ACTUAL ROAD

NO.	HANDLER	ZIP	MILAGE		TOTAL DOLLARS PER LOAD	RATE PER CWT.
			TO HANDLER	LESS 36 MILES		
0093	HOLMES CHEESE	44654	224.0	188.0	\$413.60	\$0.919
0095	SMITH	44667	216.2	180.2	\$396.44	\$0.881
3301	BREWSTER	44613	197.3	161.3	\$354.86	\$0.789
3401	BROUGHTON	45750	231.1	195.1	\$429.22	\$0.954
3950	VALLEY BELL CHARLESTC	25302	267.8	231.8	\$509.96	\$1.133
5076	TURNER DAIRY	15235	93.7	57.7	\$126.94	\$0.282
8003	SUPERIOR	44708	183.2	147.2	\$323.84	\$0.720
8008	DEANS - SHARPSVILLE	16150	136.8	100.8	\$221.76	\$0.493
8009	DFA-GOSHEN	46526	429.9	393.9	\$866.58	\$1.926
8049	DFA-NEW WILMINGTON	16142	119.0	83.0	\$182.60	\$0.406
8072	UNITED DAIRY MARTIN FE	43935	143.2	107.2	\$235.84	\$0.524
8084	UNION - UNIONTOWN	15401	82.2	46.2	\$101.64	\$0.226
8096	ALPINE CHEESE	44690	216.1	180.1	\$396.22	\$0.880
8114	TAMARACK	43055	240.3	204.3	\$449.46	\$0.999
8125	MEADOWBROOK	16510	192.8	156.8	\$344.96	\$0.767
8171	LAND 'O LAKES CARLISLE	17013	124.7	88.7	\$195.14	\$0.434
	COLTERYAHN DAIRY	16033	99.6	63.6	\$139.92	\$0.311
8607	SCHNEIDERS DAIRY	15227	100.0	64.0	\$140.80	\$0.313

Hauler Name: 3565
Mayfield Somerset, KY

Route Nos: 566

May-03

36 MILES	\$2.20 PER LOADED MILE (ONE WAY)	45,000 AVERAGE PAYLOAD
-------------	---	------------------------------

CP: 37.957n,-84.891w

NO.	HANDLER	Latitude	Longitude	ACTUAL ROAD MILAGE TO HANDLER	LESS 36 MILES	TOTAL DOLLAR PER LOAD	RATE PER CWT.
0214	Trauth	39.0853	-84.489	104.2	68.2	\$150.04	\$0.333
0224	United Dairy Farmers	39.1518	-84.4627	104.6	68.6	\$150.92	\$0.335
0230	Wayne Dairy	39.8462	-84.9039	173.3	137.3	\$302.06	\$0.671
0228	Best Ever	40.1205	-85.6784	213.4	177.4	\$390.28	\$0.867
0355	Ideal American	38.0282	-87.5346	172.9	136.9	\$301.18	\$0.669
2217	Meyer Dairy	39.2184	-84.4508	116.7	80.7	\$177.54	\$0.395
3091	Dean Louisville	38.1965	-85.6864	57.3	21.3	\$46.86	\$0.104
3301	Brewster	40.7063	-81.5981	347.5	311.5	\$685.30	\$1.523
3397	Minerva	40.7319	-81.1005	370.7	334.7	\$736.34	\$1.636
3445	Reiter Springfield	39.9357	-83.8437	184.3	148.3	\$326.26	\$0.725
3633	Winchester	38.0121	-84.1777	45.0	9.0	\$19.80	\$0.044
4104	Flav-O-Rich	37.1438	-84.097	98.3	62.3	\$137.06	\$0.305
8009	DFA Goshen	41.5721	-85.8265	343.3	307.3	\$676.06	\$1.502
8049	DFA New Wilimington	41.127	-80.3644	415.3	379.3	\$834.46	\$1.854
8091	Southern Belle	37.0836	-84.6019	70.8	34.8	\$76.56	\$0.170
8109	Kroger Springdale	39.2824	-84.4748	120.9	84.9	\$186.78	\$0.415
8113	Crossroads Farms	39.7637	-86.0404	172.1	136.1	\$299.42	\$0.665
8114	Tamarack Dairy	40.0407	-82.4613	250.9	214.9	\$472.78	\$1.056
8202	Glasgow Spray Dry	36.9886	-85.9347	110.7	74.7	\$164.34	\$0.365

Hauler Name: 3565
Mayfield Somerset, KY

Jun-03

Route Nos: 566

36 MILES	\$2.20 PER LOADED MILE (ONE WAY)	45,000 AVERAGE PAYLOAD
-------------	---	------------------------------

CP: 37.957n,-84.891w

NO.	HANDLER	Latitude	Longitude	ACTUAL ROAD MILAGE TO HANDLER	LESS 36 MILES	TOTAL DOLLAR PER LOAD	RATE PER CWT.
0214	Trauth	39.0853	-84.489	104.2	68.2	\$150.04	\$0.333
0224	United Dairy Farmers	39.1518	-84.4627	104.6	68.6	\$150.92	\$0.335
0230	Wayne Dairy	39.8462	-84.9039	173.3	137.3	\$302.06	\$0.671
0228	Best Ever	40.1205	-85.6784	213.4	177.4	\$390.28	\$0.867
0355	Ideal American	38.0282	-87.5346	172.9	136.9	\$301.18	\$0.669
2217	Meyer Dairy	39.2184	-84.4508	116.7	80.7	\$177.54	\$0.395
3091	Dean Louisville	38.1965	-85.6864	57.3	21.3	\$46.86	\$0.104
3301	Brewster	40.7063	-81.5981	347.5	311.5	\$685.30	\$1.523
3397	Minerva	40.7319	-81.1005	370.7	334.7	\$736.34	\$1.636
3445	Reiter Springfield	39.9357	-83.8437	184.3	148.3	\$326.26	\$0.725
3633	Winchester	38.0121	-84.1777	45.0	9.0	\$19.80	\$0.044
4104	Flav-O-Rich	37.1438	-84.097	98.3	62.3	\$137.06	\$0.305
8009	DFA Goshen	41.5721	-85.8265	343.3	307.3	\$676.06	\$1.502
8049	DFA New Wilimington	41.127	-80.3644	415.3	379.3	\$834.46	\$1.854
8091	Southern Belle	37.0836	-84.6019	70.8	34.8	\$76.56	\$0.170
8109	Kroger Springdale	39.2824	-84.4748	120.9	84.9	\$186.78	\$0.415
8113	Crossroads Farms	39.7637	-86.0404	172.1	136.1	\$299.42	\$0.665
8114	Tamarack Dairy	40.0407	-82.4613	250.9	214.9	\$472.78	\$1.056
8202	Glasgow Spray Dry	36.9886	-85.9347	110.7	74.7	\$164.34	\$0.365

Hauler Name: 3565
Mayfield Somerset, KY

Jul-03

Route Nos: 566

36 MILES	\$2.20 PER LOADED MILE (ONE WAY)	45,000 AVERAGE PAYLOAD
-------------	---	------------------------------

CP: 37.957n,-84.891w

NO.	HANDLER	Latitude	Longitude	ACTUAL ROAD	LESS	TOTAL DOLLAR PER LOAD	RATE PER CWT.
				MILAGE TO HANDLER	36 MILES		
0214	Trauth	39.0853	-84.489	104.2	68.2	\$150.04	\$0.333
0224	United Dairy Farmers	39.1518	-84.4627	104.6	68.6	\$150.92	\$0.335
0230	Wayne Dairy	39.8462	-84.9039	173.3	137.3	\$302.06	\$0.671
0228	Best Ever	40.1205	-85.6784	213.4	177.4	\$390.28	\$0.867
0355	Ideal American	38.0282	-87.5346	172.9	136.9	\$301.18	\$0.669
2217	Meyer Dairy	39.2184	-84.4508	116.7	80.7	\$177.54	\$0.395
3091	Dean Louisville	38.1965	-85.6864	57.3	21.3	\$46.86	\$0.104
3301	Brewster	40.7063	-81.5981	347.5	311.5	\$685.30	\$1.523
3397	Minerva	40.7319	-81.1005	370.7	334.7	\$736.34	\$1.636
3445	Reiter Springfield	39.9357	-83.8437	184.3	148.3	\$326.26	\$0.725
3633	Winchester	38.0121	-84.1777	45.0	9.0	\$19.80	\$0.044
4104	Flav-O-Rich	37.1438	-84.097	98.3	62.3	\$137.06	\$0.305
8009	DFA Goshen	41.5721	-85.8265	343.3	307.3	\$676.06	\$1.502
8049	DFA New Wilimington	41.127	-80.3644	415.3	379.3	\$834.46	\$1.854
8091	Southern Belle	37.0836	-84.6019	70.8	34.8	\$76.56	\$0.170
8109	Kroger Springdale	39.2824	-84.4748	120.9	84.9	\$186.78	\$0.415
8113	Crossroads Farms	39.7637	-86.0404	172.1	136.1	\$299.42	\$0.665
8114	Tamarack Dairy	40.0407	-82.4613	250.9	214.9	\$472.78	\$1.056
8202	Glasgow Spray Dry	36.9886	-85.9347	110.7	74.7	\$164.34	\$0.365

Hauler Nam Moore's Milk Hauling

Dillsboro, IN

May-03

Route Nos: 589

36 MILES	\$2.20 PER LOADED MILE (ONE WAY)	45,000 AVERAGE PAYLOAD
-------------	---	------------------------------

CP: 38.884n,-85.175w

NO.	HANDLER	Latitude	Longitude	ACTUAL ROAD	LESS	TOTAL DOLLAR:	RATE PER
				MILAGE TO HANDLER	36 MILES	PER LOAD	CWT.
0214	Trauth	39.0853	-84.489	67.1	31.1	\$68.42	\$0.152
0224	United Dairy Farmers	39.1518	-84.4627	71.1	35.1	\$77.22	\$0.172
0230	Wayne Dairy	39.8462	-84.9039	92.2	56.2	\$123.64	\$0.275
0228	Best Ever	40.1205	-85.6784	104.3	68.3	\$150.26	\$0.334
0355	Ideal American	38.0282	-87.5346	185.8	149.8	\$329.56	\$0.732
2217	Meyer Dairy	39.2184	-84.4508	69.7	33.7	\$74.14	\$0.165
3091	Dean Louisville	38.1965	-85.6864	75.1	39.1	\$86.02	\$0.191
3301	Brewster	40.7063	-81.5981	294.4	258.4	\$568.48	\$1.263
3397	Minerva	40.7319	-81.1005	317.6	281.6	\$619.52	\$1.377
3445	Reiter Springfield	39.9357	-83.8437	132.0	96.0	\$211.20	\$0.469
3633	Winchester	38.0121	-84.1777	103.5	67.5	\$148.50	\$0.330
4104	Flav-O-Rich	37.1438	-84.097	159.9	123.9	\$272.58	\$0.606
8009	DFA Goshen	41.5721	-85.8265	234.3	198.3	\$436.26	\$0.969
8049	DFA New Wilimington	41.127	-80.3644	362.2	326.2	\$717.64	\$1.595
8091	Southern Belle	37.0836	-84.6019	165.3	129.3	\$284.46	\$0.632
8109	Kroger Springdale	39.2824	-84.4748	67.1	31.1	\$68.42	\$0.152
8113	Crossroads Farms	39.7637	-86.0404	81.6	45.6	\$100.32	\$0.223
8114	Tamarack Dairy	40.0407	-82.4613	197.8	161.8	\$355.96	\$0.796
8202	Glasgow Spray Dry	36.9886	-85.9347	167.6	131.6	\$289.52	\$0.643

Hauler Nam Moore's Milk Hauling

Dillsboro, IN

Jun-03

Route Nos: 589

36 MILES	\$2.20 PER LOADED MILE (ONE WAY)	45,000 AVERAGE PAYLOAD
-------------	---	------------------------------

CP: 38.884n,-85.175w

NO.	HANDLER	Latitude	Longitude	ACTUAL ROAD MILAGE TO HANDLER	LESS	TOTAL DOLLAR: PER LOAD	RATE PER CWT.
					36 MILES		
0214	Trauth	39.0853	-84.489	67.1	31.1	\$68.42	\$0.152
0224	United Dairy Farmers	39.1518	-84.4627	71.1	35.1	\$77.22	\$0.172
0230	Wayne Dairy	39.8462	-84.9039	92.2	56.2	\$123.64	\$0.275
0228	Best Ever	40.1205	-85.6784	104.3	68.3	\$150.26	\$0.334
0355	Ideal American	38.0282	-87.5346	185.8	149.8	\$329.56	\$0.732
2217	Meyer Dairy	39.2184	-84.4508	69.7	33.7	\$74.14	\$0.165
3091	Dean Louisville	38.1965	-85.6864	75.1	39.1	\$86.02	\$0.191
3301	Brewster	40.7063	-81.5981	294.4	258.4	\$568.48	\$1.263
3397	Minerva	40.7319	-81.1005	317.6	281.6	\$619.52	\$1.377
3445	Reiter Springfield	39.9357	-83.8437	132.0	96.0	\$211.20	\$0.469
3633	Winchester	38.0121	-84.1777	103.5	67.5	\$148.50	\$0.330
4104	Flav-O-Rich	37.1438	-84.097	159.9	123.9	\$272.58	\$0.606
8009	DFA Goshen	41.5721	-85.8265	234.3	198.3	\$436.26	\$0.969
8049	DFA New Wilimington	41.127	-80.3644	362.2	326.2	\$717.64	\$1.595
8091	Southern Belle	37.0836	-84.6019	165.3	129.3	\$284.46	\$0.632
8109	Kroger Springdale	39.2824	-84.4748	67.1	31.1	\$68.42	\$0.152
8113	Crossroads Farms	39.7637	-86.0404	81.6	45.6	\$100.32	\$0.223
8114	Tamarack Dairy	40.0407	-82.4613	197.8	161.8	\$355.96	\$0.796
8202	Glasgow Spray Dry	36.9886	-85.9347	167.6	131.6	\$289.52	\$0.643

Jul-03

Hauler Nam Moore's Milk Hauling
 Route Nos: 589

Dillsboro, IN

36 MILES	\$2.20 PER LOADED MILE (ONE WAY)	45,000 AVERAGE PAYLOAD
-------------	---	------------------------------

CP: 38.884n,-85.175w

ACTUAL ROAD
MILAGE
TO HANDLER

LESS

36
MILES

TOTAL DOLLAR
PER LOAD

RATE PER
CWT.

NO.	HANDLER	Latitude	Longitude	ACTUAL ROAD MILAGE TO HANDLER	LESS 36 MILES	TOTAL DOLLAR PER LOAD	RATE PER CWT.
0214	Trauth	39.0853	-84.489	67.1	31.1	\$68.42	\$0.152
0224	United Dairy Farmers	39.1518	-84.4627	71.1	35.1	\$77.22	\$0.172
0230	Wayne Dairy	39.8462	-84.9039	92.2	56.2	\$123.64	\$0.275
0228	Best Ever	40.1205	-85.6784	104.3	68.3	\$150.26	\$0.334
0355	Ideal American	38.0282	-87.5346	185.8	149.8	\$329.56	\$0.732
2217	Meyer Dairy	39.2184	-84.4508	69.7	33.7	\$74.14	\$0.165
3091	Dean Louisville	38.1965	-85.6864	75.1	39.1	\$86.02	\$0.191
3301	Brewster	40.7063	-81.5981	294.4	258.4	\$568.48	\$1.263
3397	Minerva	40.7319	-81.1005	317.6	281.6	\$619.52	\$1.377
3445	Reiter Springfield	39.9357	-83.8437	132.0	96.0	\$211.20	\$0.469
3633	Winchester	38.0121	-84.1777	103.5	67.5	\$148.50	\$0.330
4104	Flav-O-Rich	37.1438	-84.097	159.9	123.9	\$272.58	\$0.606
8009	DFA Goshen	41.5721	-85.8265	234.3	198.3	\$436.26	\$0.969
8049	DFA New Wilimington	41.127	-80.3644	362.2	326.2	\$717.64	\$1.595
8091	Southern Belle	37.0836	-84.6019	165.3	129.3	\$284.46	\$0.632
8109	Kroger Springdale	39.2824	-84.4748	67.1	31.1	\$68.42	\$0.152
8113	Crossroads Farms	39.7637	-86.0404	81.6	45.6	\$100.32	\$0.223
8114	Tamarack Dairy	40.0407	-82.4613	197.8	161.8	\$355.96	\$0.796
8202	Glasgow Spray Dry	36.9886	-85.9347	167.6	131.6	\$289.52	\$0.643

Hauler Name: Richard Martin 6914 Volant, PA

Route Nos: 914
 CP 41.044n,80.144w

May-03

36 MILES	\$2.20 PER LOADED MILE (ONE WAY)	45,000 AVERAGE PAYLOAD
-------------	---	------------------------------

NO.	HANDLER	ZIP	ACTUAL ROAD	LESS	TOTAL DOLLARS PER LOAD	RATE PER CWT.
			MILAGE TO HANDLER	36 MILES		
0093	Holmes	44654	135.2	99.2	\$218.24	\$0.485
0095	Smith	44667	114.4	78.4	\$172.48	\$0.383
0246	Guggisburg Cheese	44654	135.2	99.2	\$218.24	\$0.485
0521	Reiter - Akron	44314	93.2	57.2	\$125.84	\$0.280
0543	Pollio	14821	257	221.0	\$486.20	\$1.080
2212	Dairymens	44111	115.2	79.2	\$174.24	\$0.387
3301	Brewster	44613	112.3	76.3	\$167.86	\$0.373
3394	Middlefield Cheese	44062	78.3	42.3	\$93.06	\$0.207
3397	Minerva	44657	74.1	38.1	\$83.82	\$0.186
3412	Broughtons-Marietta	45750	193.3	157.3	\$346.06	\$0.769
3678	Dietrich's Middlebury Center	16935	208.4	172.4	\$379.28	\$0.843
3769	Leprino Waverly	14892	283.2	247.2	\$543.84	\$1.209
3805	Friendship Dairy	14739	193.7	157.7	\$346.94	\$0.771
3815	Empire	14727	186.2	150.2	\$330.44	\$0.734
3950	United Dairy Valley Bell	25302	269.5	233.5	\$513.70	\$1.142
5076	Turner Dairy	15235	62.3	26.3	\$57.86	\$0.129
8003	Superior	44708	99	63.0	\$138.60	\$0.308
8006	Consun	44035	131.2	95.2	\$209.44	\$0.465
8008	Deans - Sharpville	16150	34.4	0	\$0.00	\$0.000
8009	Goshen	46526	339.8	303.8	\$668.36	\$1.485
8049	Farmers Cheese	16142	15.1	0	\$0.00	\$0.000
8054	Miceli Cheese	44104	105.4	69.4	152.68	\$0.339
8072	United-- Martins Ferry	43935	100.7	64.7	\$142.34	\$0.316
8084	Fikes--Uniontown	15401	104.7	68.7	\$151.14	\$0.341
8096	Alpine Cheese	44690	121.7	85.7	\$188.54	\$0.419
8114	Tamarack-Newark	43055	202.7	166.7	\$366.74	\$0.815
8125	Meadowbrook	16510	84.3	0.0	\$0.00	\$0.000
8171	LOL Holly Carlisle	17013	232.3	196.3	\$431.86	\$0.960
8177	Fairview Swiss	16124	26.5	0	\$0.00	\$0.000
8216	Sorrento Cheese	14220	166.3	130.3	\$286.66	\$0.637
8300	Dietrich's Reading	19605	295.8	259.8	\$571.56	\$1.270
8503	Eagle Family Foods	16901	231.1	195.1	\$429.22	\$0.954
8607	Schneiders	15227	58.8	22.8	\$50.16	\$0.111

Hauler Name: Richard Martin 6914 Volant, PA
 Route Nos: 914
 CP 41.044n,80.144w

Jun-03

36 MILES	\$2.20 PER LOADED MILE (ONE WAY)	45,000 AVERAGE PAYLOAD
-------------	---	------------------------------

NO.	HANDLER	ZIP	ACTUAL ROAD	LESS	TOTAL DOLLARS PER LOAD	RATE PER CWT.
			MILAGE TO HANDLER	36 MILES		
0093	Holmes	44654	135.2	99.2	\$218.24	\$0.485
0095	Smith	44667	114.4	78.4	\$172.48	\$0.383
0246	Guggisburg Cheese	44654	135.2	99.2	\$218.24	\$0.485
0521	Reiter - Akron	44314	93.2	57.2	\$125.84	\$0.280
0543	Pollio	14821	257	221.0	\$486.20	\$1.080
2212	Dairymens	44111	115.2	79.2	\$174.24	\$0.387
3301	Brewster	44613	112.3	76.3	\$167.86	\$0.373
3394	Middlefield Cheese	44062	78.3	42.3	\$93.06	\$0.207
3397	Minerva	44657	74.1	38.1	\$83.82	\$0.186
3412	Broughtons-Marietta	45750	193.3	157.3	\$346.06	\$0.769
3678	Dietrich's Middlebury Center	16935	208.4	172.4	\$379.28	\$0.843
3769	Leprino Waverly	14892	283.2	247.2	\$543.84	\$1.209
3805	Friendship Dairy	14739	193.7	157.7	\$346.94	\$0.771
3815	Empire	14727	186.2	150.2	\$330.44	\$0.734
3950	United Dairy Valley Bell	25302	269.5	233.5	\$513.70	\$1.142
5076	Turner Dairy	15235	62.3	26.3	\$57.86	\$0.129
8003	Superior	44708	99	63.0	\$138.60	\$0.308
8006	Consun	44035	131.2	95.2	\$209.44	\$0.465
8008	Deans - Sharpsville	16150	34.4	0	\$0.00	\$0.000
8009	Goshen	46526	339.8	303.8	\$668.36	\$1.485
8049	Farmers Cheese	16142	15.1	0	\$0.00	\$0.000
8054	Miceli Cheese	44104	105.4	69.4	152.68	\$0.339
8072	United- Martins Ferry	43935	100.7	64.7	\$142.34	\$0.316
8084	Fikes-Uniontown	15401	104.7	68.7	\$151.14	\$0.341
8096	Alpine Cheese	44690	121.7	85.7	\$188.54	\$0.419
8114	Tamarack-Newark	43055	202.7	166.7	\$366.74	\$0.815
8125	Meadowbrook	16510	84.3	0.0	\$0.00	\$0.000
8171	LOL Holly Carlisle	17013	232.3	196.3	\$431.86	\$0.960
8177	Fairview Swiss	16124	26.5	0	\$0.00	\$0.000
8216	Sorrento Cheese	14220	166.3	130.3	\$286.66	\$0.637
8300	Dietrich's Reading	19605	295.8	259.8	\$571.56	\$1.270
8503	Eagle Family Foods	16901	231.1	195.1	\$429.22	\$0.954
8607	Schneiders	15227	58.8	22.8	\$50.16	\$0.111

Jul-03

Hauler Name: Richard Martin 6914 Volant, PA

Route Nos: 914
 CP 41.044n,80.144w

36 MILES	\$2.20 PER LOADED MILE (ONE WAY)	45,000 AVERAGE PAYLOAD
-------------	---	------------------------------

NO.	HANDLER	ZIP	ACTUAL ROAD	LESS	TOTAL DOLLARS	RATE PER
			MILAGE	36		
		TO HANDLER	MILES	MILES		CWT.
0093	Holmes	44654	135.2	99.2	\$218.24	\$0.485
0095	Smith	44667	114.4	78.4	\$172.48	\$0.383
0246	Guggisburg Cheese	44654	135.2	99.2	\$218.24	\$0.485
0521	Reiter - Akron	44314	93.2	57.2	\$125.84	\$0.280
0543	Pollio	14821	257	221.0	\$486.20	\$1.080
2212	Dairymens	44111	115.2	79.2	\$174.24	\$0.387
3301	Brewster	44613	112.3	76.3	\$167.86	\$0.373
3394	Middlefield Cheese	44062	78.3	42.3	\$93.06	\$0.207
3397	Minerva	44657	74.1	38.1	\$83.82	\$0.186
3412	Broughtons-Marietta	45750	193.3	157.3	\$346.06	\$0.769
3678	Dietrich's Middlebury Center	16935	208.4	172.4	\$379.28	\$0.843
3769	Leprino Waverly	14892	283.2	247.2	\$543.84	\$1.209
3805	Friendship Dairy	14739	193.7	157.7	\$346.94	\$0.771
3815	Empire	14727	186.2	150.2	\$330.44	\$0.734
3950	United Dairy Valley Bell	25302	269.5	233.5	\$513.70	\$1.142
5076	Turner Dairy	15235	62.3	26.3	\$57.86	\$0.129
8003	Superior	44708	99	63.0	\$138.60	\$0.308
8006	Consun	44035	131.2	95.2	\$209.44	\$0.465
8008	Deans - Sharpville	16150	34.4	0	\$0.00	\$0.000
8009	Goshen	46526	339.8	303.8	\$668.36	\$1.485
8049	Farmers Cheese	16142	15.1	0	\$0.00	\$0.000
8054	Miceli Cheese	44104	105.4	69.4	152.68	\$0.339
8072	United-- Martins Ferry	43935	100.7	64.7	\$142.34	\$0.316
8084	Fikes--Uniontown	15401	104.7	68.7	\$151.14	\$0.341
8096	Alpine Cheese	44690	121.7	85.7	\$188.54	\$0.419
8114	Tamarack-Newark	43055	202.7	166.7	\$366.74	\$0.816
8125	Meadowbrook	16510	84.3	0.0	\$0.00	\$0.000
8171	LOL Holly Carlisle	17013	232.3	196.3	\$431.86	\$0.960
8177	Fairview Swiss	16124	26.5	0	\$0.00	\$0.000
8216	Sorrento Cheese	14220	166.3	130.3	\$286.66	\$0.637
8300	Dietrich's Reading	19605	295.8	259.8	\$571.56	\$1.270
8503	Eagle Family Foods	16901	231.1	195.1	\$429.22	\$0.954
8607	Schneiders	15227	58.8	22.8	\$50.16	\$0.111

1401
 Hauler Name: Meredith & Albrecht Snover, MI

May-03

Route Nos: 1401

36 MILES	\$2.20 PER LOADED MILE (ONE WAY)	45,000 AVERAGE PAYLOAD
-------------	---	------------------------------

CP 43.509n,83.050w

ACTUAL ROAD
MILAGE

TOTAL DOLLARS
PER LOAD

RATE PER
CWT.

NO.	HANDLER	ZIP	TO HANDLER	LESS 36 MILES	TOTAL DOLLARS PER LOAD	RATE PER CWT.
0093	Holmes	44654	276.3	240.3	\$528.66	\$1.175
0095	Smith	44667	270.9	234.9	\$516.78	\$1.148
0215	Dean's Rochester	46975	323.6	287.6	\$632.72	\$1.406
0224	UDF	45212	352.2	316.2	\$595.64	\$1.546
0230	Wayne	47374	331.4	295.4	\$649.88	\$1.444
0288	Best Ever-Anderson, IN	46015	335.3	299.3	\$558.46	\$1.463
0445	Dannon	45865	263.5	227.5	\$500.50	\$1.112
0521	Reiter - Akron	44314	279.9	243.9	\$536.58	\$1.192
2212	Dairymen	44111	247.7	211.7	\$465.74	\$1.035
2217	Meyer	45215	339.2	303.2	\$667.04	\$1.482
2330	Parmalat	49548	183.5	147.5	\$324.50	\$0.721
3301	Brewster	44613	281	245.0	\$539.00	\$1.198
3348	Bareman	49422	211.5	175.5	\$386.10	\$0.858
3358	Embest	46150	105.9	70.9	\$155.98	\$0.347
3392	Leprino-Attendale	49401	195.1	159.1	\$356.02	\$0.778
3394	Middlefield	44062	291.7	255.7	\$562.54	\$1.250
3397	Minerva	44657	317.3	281.3	\$618.86	\$1.375
3445	Reiter - Springfield	45504	312.4	276.4	\$606.08	\$1.351
3446	Sunshine Biscuit	43420	176.5	140.5	\$309.10	\$0.687
3465	General Mills	49677	148.7	112.7	\$247.94	\$0.551
3560	Vemdale	48238	89.7	53.7	\$118.14	\$0.263
8008	Dean Sharpsville	16150	325	289.0	\$635.80	\$1.418
8009	DFA-Goshen	46526	261.1	225.1	\$495.22	\$1.100
8049	Farmer Cheese	16142	336.6	300.6	\$651.32	\$1.475
8054	Miceli Cheese	44104	259.9	223.9	\$492.58	\$1.095
8056	MMPA-Constantine	49042	230	194.0	\$426.80	\$0.948
8113	Crossroads Farms	46219	372.2	336.2	\$739.64	\$1.644
8114	Tamarack	43055	308.2	272.2	\$598.84	\$1.331
8125	Meadow Brook	16510	362.8	326.8	\$718.96	\$1.603
8129	Schenkle	46750	281.4	245.4	\$539.88	\$1.200
8144	MMPA-Ovid	48866	104.4	68.4	\$150.48	\$0.334
8146	Diehl-MI	49221	164.8	128.8	\$283.36	\$0.630
8256	Dean Liberty	49631	141.3	105.3	\$231.66	\$0.515
8267	Country Fresh GR	49548	187.2	151.2	\$332.64	\$0.739
8345	DKH	46540	248.3	212.3	\$467.06	\$1.038
RI 23	2004		170.6	134.6	\$296.12	\$0.658
	2005		164.9	128.9	\$283.58	\$0.630

n... 26

Exhibit The Conneratives

1401
 Hauler Name: Meredith & Albrecht Snover, MI

Route Nos: 1401

CP 43.509n, 83.050w

Jun-03

36 MILES	\$2.20 PER LOADED MILE (ONE WAY)	45,000 AVERAGE PAYLOAD
-------------	---	------------------------------

27

NO.	HANDLER	ZIP	ACTUAL ROAD MILAGE TO HANDLER	LESS 36 MILES	TOTAL DOLLARS PER LOAD	RATE PER CWT.
0093	Holmes	44654	276.3	240.3	\$528.66	\$1.175
0095	Smith	44667	270.9	234.9	\$516.78	\$1.148
0215	Dean's Rochester	46975	323.6	287.6	\$632.72	\$1.406
0224	UDF	45212	352.2	316.2	\$695.64	\$1.546
0230	Wayne	47374	331.4	295.4	\$649.88	\$1.444
0288	Best Ever-Anderson, IN	46015	335.3	299.3	\$658.46	\$1.463
0445	Dannon	45865	263.5	227.5	\$500.50	\$1.112
0521	Reiter - Akron	44314	279.9	243.9	\$535.58	\$1.192
2212	Dairymen	44111	247.7	211.7	\$465.74	\$1.035
2217	Meyer	45215	339.2	303.2	\$667.04	\$1.482
2330	Parmalat	49548	183.5	147.5	\$324.50	\$0.721
3301	Brewster	44613	281	245.0	\$539.00	\$1.198
3348	Bareman	49422	211.5	175.5	\$386.10	\$0.858
3358	Embest	48150	106.9	70.9	\$155.98	\$0.347
3392	Leprino-Allendale	49401	195.1	159.1	\$350.02	\$0.778
3394	Middlefield	44062	291.7	255.7	\$562.54	\$1.250
3397	Minerva	44657	317.3	281.3	\$618.86	\$1.375
3445	Reiter - Springfield	45504	312.4	276.4	\$608.08	\$1.351
3446	Sunshine Biscuit	43420	176.5	140.5	\$309.10	\$0.687
3465	General Mills	49677	148.7	112.7	\$247.94	\$0.551
3560	Verndale	48238	89.7	53.7	\$118.14	\$0.263
6008	Dean Sharpsville	16150	325	289.0	\$635.80	\$1.418
8009	DFA-Goshen	46526	261.1	225.1	\$495.22	\$1.100
8049	Farmer Cheese	16142	336.6	300.6	\$681.32	\$1.475
8054	Miceli Cheese	44104	259.9	223.9	\$492.58	\$1.095
8056	MMPA-Constantine	49042	230	194.0	\$425.80	\$0.948
8113	Crossroads Farms	46219	372.2	336.2	\$739.64	\$1.644
8114	Tamarack	43055	308.2	272.2	\$598.84	\$1.331
8125	Meadow Brook	16510	362.8	326.8	\$718.96	\$1.603
8129	Schenkle	46750	281.4	245.4	\$539.88	\$1.200
8144	MMPA-Ovid	48865	104.4	68.4	\$150.48	\$0.334
8146	Diehl-MI	49221	164.8	128.8	\$283.36	\$0.630
8256	Dean Liberty	49631	141.3	105.3	\$231.66	\$0.515
8267	Country Fresh GR	49548	187.2	151.2	\$332.64	\$0.739
8345	DKH	46540	248.3	212.3	\$467.06	\$1.038
Rt 23	2004		170.6	134.6	\$295.12	\$0.658
	2005		164.9	128.9	\$283.58	\$0.630

The Cooperatives
 Exhibit

1401
 Hauler Name: Meredith & Albrecht Snover, MI

Jul-03

Route Nos: 1401

36 MILES	\$2.20 PER LOADED MILE (ONE WAY)	45,000 AVERAGE PAYLOAD
-------------	---	------------------------------

CP 43.509n,83.050w

ACTUAL ROAD

NO.	HANDLER	Z I P	ACTUAL ROAD MILAGE TO HANDLER	LESS 36 MILES	TOTAL DOLLARS PER LOAD	RATE PER CWT.
0093	Holmes	44654	276.3	240.3	\$529.66	\$1.175
0095	Smith	44667	270.9	234.9	\$516.78	\$1.148
0215	Dean's Rochester	46975	323.6	287.6	\$632.72	\$1.406
0224	UDF	45212	352.2	316.2	\$695.64	\$1.546
0230	Wayne	47374	331.4	295.4	\$649.88	\$1.444
0288	Best Ever-Anderson, IN	46015	335.3	299.3	\$655.46	\$1.463
0445	Dannon	45865	263.5	227.5	\$500.50	\$1.112
0521	Reiter - Akron	44314	279.9	243.9	\$536.58	\$1.192
2212	Dairymen	44111	247.7	211.7	\$465.74	\$1.035
2217	Meyer	45215	339.2	303.2	\$667.04	\$1.482
2330	Parmalat	49548	183.5	147.5	\$324.50	\$0.721
3301	Brewster	44613	281	245.0	\$539.00	\$1.198
3348	Bareman	49422	211.5	175.5	\$386.10	\$0.858
3358	Embest	48150	106.9	70.9	\$155.98	\$0.347
3392	Leprino-Allendale	49401	195.1	159.1	\$350.02	\$0.778
3394	Middlefield	44062	291.7	255.7	\$562.54	\$1.250
3397	Minerva	44657	317.3	281.3	\$618.86	\$1.375
3445	Reiter - Springfield	45504	312.4	276.4	\$608.08	\$1.351
3446	Sunshine Biscuit	43420	176.5	140.5	\$309.10	\$0.687
3465	General Mills	49677	148.7	112.7	\$247.94	\$0.551
3560	Verndale	48236	89.7	53.7	\$118.14	\$0.263
8008	Dean Sharpville	16150	325	289.0	\$635.80	\$1.418
8009	DFA-Goshen	46526	261.1	225.1	\$495.22	\$1.100
8049	Farmer Cheese	16142	336.6	300.6	\$661.32	\$1.475
8054	Miceli Cheese	44104	259.9	223.9	\$492.58	\$1.095
8056	MMPA-Constantine	49042	230	194.0	\$426.80	\$0.948
8113	Crossroads Farms	46219	372.2	336.2	\$739.84	\$1.644
8114	Tamarack	43055	308.2	272.2	\$598.84	\$1.331
8125	Meadow Brook	16510	362.8	326.8	\$718.96	\$1.603
8129	Schenke	46750	281.4	245.4	\$539.88	\$1.200
8144	MMPA-Ovid	48866	104.4	68.4	\$150.48	\$0.334
8146	Diehl-MI	49221	164.8	128.8	\$283.36	\$0.630
8256	Dean Liberty	49631	141.3	105.3	\$231.66	\$0.515
8267	Country Fresh GR	49548	187.2	151.2	\$332.64	\$0.738
8345	DKH	46540	248.3	212.3	\$467.06	\$1.038
Rt 23	2004		170.6	134.6	\$296.12	\$0.658
	2005		164.9	128.9	\$283.58	\$0.630

Hauler Narr Wadsworth Petersburg, MI

Route Nos: 382 & NFO 183

36 MILES	\$2.20 PER LOADED MILE (ONE WAY)	45,000 AVERAGE PAYLOAD
-------------	---	------------------------------

41.963n,84.319w

ACTUAL ROAD

HANDLER	ZIP	MILAGE		TOTAL DOLLARS PER LOAD	RATE PER CWT.
		TO HANDLER	LESS 36 MILES		
0093 Holmes	44654	197.7	161.7	\$355.74	\$0.791
0095 Smith	44667	192.3	156.3	\$343.86	\$0.764
0215 Deans-Rochester	46975	170.2	134.2	\$295.24	\$0.656
0246 Guggisberg	44654	197.7	161.7	\$355.74	\$0.791
0230 Wayne	47374	172.4	136.4	\$300.08	\$0.667
0288 Best Ever Prairie Farms	46015	184.6	148.6	\$326.92	\$0.726
0445 Dannon	45865	122.9	86.9	\$191.18	\$0.425
0521 Reiter - Akron	44314	201.3	165.3	\$363.66	\$0.808
2212 Dairyman	44111	169.1	133.1	\$292.82	\$0.651
2217 Meyer	45215	224.1	188.1	\$413.82	\$0.920
2392 Leprino Allendale	48401	147.2	111.2	\$244.64	\$0.544
3301 Brewster	44613	202.4	166.4	\$366.08	\$0.814
3348 Bareman	49422	141.6	105.6	\$232.32	\$0.516
3352 Embest	48150	76.5	40.5	\$89.10	\$0.198
3394 Middlefield Cheese	44062	213.1	177.1	\$389.62	\$0.866
3397 Minerva	44657	238.7	202.7	\$445.94	\$0.991
3412 Broughton	45750	299.2	263.2	\$579.04	\$1.287
3445 Reiter - Springfield	45504	192.3	156.3	\$343.86	\$0.764
3446 Sunshine Bisquit	43420	98.6	62.6	\$137.72	\$0.306
3465 General Mills	49677	196.3	160.3	\$352.66	\$0.784
3560 Verndale	48238	91.2	55.2	\$121.44	\$0.270
3633 Kroger Winchester	40391	327	291.0	\$640.20	\$1.423
3723 Michigan Dairy	48150	76.5	40.5	\$89.10	\$0.198
8003 Superior	44708	222.3	186.3	\$409.86	\$0.911
8008 Deans - Sharpville	16150	246.4	210.4	\$462.88	\$1.034
8009 DFA-Goshen	46526	110.4	74.4	\$163.68	\$0.364
8113 Crossroads	46219	221.5	185.5	\$408.10	\$0.907
8031 Toft	44871	122.5	86.5	\$190.30	\$0.423
8035 Pearl Valley	43824	224.5	188.5	\$414.70	\$0.922
8040 Allen	46852	85.4	49.4	\$108.68	\$0.242
8049 Farmers Cheese	16142	246.8	210.8	\$463.76	\$1.036
8054 Miceli	44107	181.3	145.3	\$319.66	\$0.710
8056 MMPA Constantine	49042	82.6	46.6	\$102.52	\$0.228
8084 United - Uniontown	15401	350.7	314.7	\$692.34	\$1.544
8096 Alpine	44690	204.2	168.2	\$370.04	\$0.822
8104 Michigan State Institute	49201	20.7	0.0	\$0.00	\$0.000
8109 Kroger Springdale	45246	221.1	185.1	\$407.22	\$0.905
8114 Tamarack	43055	220.1	184.1	\$405.02	\$0.900
8117 Sterling	43567	41.6	5.6	\$12.32	\$0.027
8125 Meadowbrook	16510	284.2	248.2	\$546.04	\$1.218
8129 Schenkle	46750	130.7	94.7	\$208.34	\$0.463
8144 MMPA Ovid	48866	91.8	55.8	\$122.76	\$0.273
8146 Diehl - Adrian	49221	27.1	0.0	\$0.00	\$0.000
8256 Dean Liberty	49631	169.4	133.4	\$293.48	\$0.652
8267 CF GR	49518	124.5	88.5	\$194.70	\$0.433
8325 McCartyville Reload		128.1	92.1	\$202.62	\$0.450
8345 Deutsch-Kase-Haus	46540	97.6	61.6	\$135.52	\$0.301
8366 Ragersville Cheese	44681	213.7	177.7	\$390.94	\$0.869
8406 Quality Dairy	48910	64.3	28.3	\$62.26	\$0.138
Rt 127 2004		19.4	0	0	\$0.000
2005		22.7	0	0	0

Hauler Narr Wadsworth Petersburg, MI

Route Nos: 382 & NFO 183

36 MILES	\$2.20 PER LOADED MILE (ONE WAY)	45,000 AVERAGE PAYLOAD
-------------	---	------------------------------

41.963n,84.319w

ACTUAL ROAD
MILAGE

HANDLER	ZIP	TO HANDLER	LESS 36 MILES	TOTAL DOLLARS PER LOAD	RATE PER CWT.
0093 Holmes	44654	197.7	161.7	\$355.74	\$0.791
0095 Smith	44667	192.3	156.3	\$343.86	\$0.764
0215 Deans-Rochester	46975	170.2	134.2	\$295.24	\$0.656
0246 Guggisberg	44654	197.7	161.7	\$355.74	\$0.791
0230 Wayne	47374	172.4	136.4	\$300.08	\$0.667
0288 Best Ever Prairie Farms	46015	184.6	148.6	\$326.92	\$0.726
0445 Dannon	45865	122.9	86.9	\$191.18	\$0.425
0521 Reiter - Akron	44314	201.3	165.3	\$363.66	\$0.808
2212 Dairymen	44111	169.1	133.1	\$292.82	\$0.651
2217 Meyer	45215	224.1	188.1	\$413.82	\$0.920
2392 Leprino Allendale	48401	147.2	111.2	\$244.64	\$0.544
3301 Brewster	44613	202.4	166.4	\$366.08	\$0.814
3348 Bareman	49422	141.6	105.6	\$232.32	\$0.516
3352 Embest	48150	76.5	40.5	\$89.10	\$0.198
3394 Middlefield Cheese	44062	213.1	177.1	\$389.62	\$0.866
3397 Minerva	44657	238.7	202.7	\$445.94	\$0.991
3412 Broughton	45750	299.2	263.2	\$579.04	\$1.287
3445 Reiter - Springfield	45504	192.3	156.3	\$343.86	\$0.764
3446 Sunshine Bisquit	43420	98.6	62.6	\$137.72	\$0.306
3465 General Mills	49677	196.3	160.3	\$352.66	\$0.784
3560 Verndale	48238	91.2	55.2	\$121.44	\$0.270
3633 Kroger Winchester	40391	327	291.0	\$640.20	\$1.423
3723 Michigan Dairy	48150	76.5	40.5	\$89.10	\$0.198
8003 Superior	44708	222.3	186.3	\$409.86	\$0.911
8008 Deans - Sharpville	16150	246.4	210.4	\$462.88	\$1.034
8009 DFA-Goshen	46526	110.4	74.4	\$163.68	\$0.364
8113 Crossroads	46219	221.5	185.5	\$408.10	\$0.907
8031 Toft	44871	122.5	86.5	\$190.30	\$0.423
8035 Pearl Valley	43824	224.5	188.5	\$414.70	\$0.922
8040 Allen	46852	85.4	49.4	\$108.68	\$0.242
8049 Farmers Cheese	16142	246.8	210.8	\$463.76	\$1.036
8054 Miceli	44107	181.3	145.3	\$319.66	\$0.710
8056 MMPA Constantine	49042	82.6	46.6	\$102.52	\$0.228
8084 United - Uniontown	15401	350.7	314.7	\$692.34	\$1.544
8096 Alpine	44690	204.2	168.2	\$370.04	\$0.822
8104 Michigan State Institute	49201	20.7	0.0	\$0.00	\$0.000
8109 Kroger Springdale	45246	221.1	185.1	\$407.22	\$0.905
8114 Tamarack	43055	220.1	184.1	\$405.02	\$0.900
8117 Sterling	43567	41.6	5.6	\$12.32	\$0.027
8125 Meadowbrook	16510	284.2	248.2	\$546.04	\$1.218
8129 Schenkle	46750	130.7	94.7	\$208.34	\$0.463
8144 MMPA Ovid	48866	91.8	55.8	\$122.76	\$0.273
8146 Diehl - Adrian	49221	27.1	0.0	\$0.00	\$0.000
8256 Dean Liberty	49631	169.4	133.4	\$293.48	\$0.652
8267 CF GR	49518	124.5	88.5	\$194.70	\$0.433
8325 McCartyville Reload		128.1	92.1	\$202.62	\$0.450
8345 Deutsch-Kase-Haus	46540	97.6	61.6	\$135.52	\$0.301
8366 Ragersville Cheese	44681	213.7	177.7	\$390.94	\$0.869
8406 Quality Dairy	48910	64.3	28.3	\$62.26	\$0.138
Rt 127 2004		19.4	0	0	\$0.000
2005		22.7	0	0	0

pmmb

pmmb

pmmb

pmmb

The Cooperatives

Exhibit

Page 30

Hauler Name Wadsworth Petersburg, MI

Route Nos: 382 & NFO 183

36 MILES	\$2.20 PER LOADED MILE (ONE WAY)	45,000 AVERAGE PAYLOAD
-------------	---	------------------------------

41.963n,84.319w

ACTUAL ROAD
MILAGE

HANDLER	ZIP	TO HANDLER	LESS 36 MILES	TOTAL DOLLARS PER LOAD	RATE PER CWT.
0093 Holmes	44654	197.7	161.7	\$355.74	\$0.791
0095 Smith	44667	192.3	156.3	\$343.86	\$0.764
0215 Deans-Rochester	46975	170.2	134.2	\$295.24	\$0.656
0246 Guggisberg	44654	197.7	161.7	\$355.74	\$0.791
0230 Wayne	47374	172.4	136.4	\$300.08	\$0.667
0288 Best Ever Prairie Farms	46015	184.6	148.6	\$326.92	\$0.726
0445 Dannon	45865	122.9	86.9	\$191.18	\$0.425
0521 Reiter - Akron	44314	201.3	165.3	\$363.66	\$0.808
2212 Dairymen	44111	169.1	133.1	\$292.82	\$0.651
2217 Meyer	45215	224.1	188.1	\$413.82	\$0.920
2392 Leprino Allendale	48401	147.2	111.2	\$244.64	\$0.544
3301 Brewster	44613	202.4	166.4	\$366.08	\$0.814
3348 Bareman	49422	141.6	105.6	\$232.32	\$0.516
3352 Embest	48150	76.5	40.5	\$89.10	\$0.198
3394 Middlefield Cheese	44062	213.1	177.1	\$389.62	\$0.866
3397 Minerva	44657	238.7	202.7	\$445.94	\$0.991
3412 Broughton	45750	299.2	263.2	\$579.04	\$1.287
3445 Reiter - Springfield	45504	192.3	156.3	\$343.86	\$0.764
3446 Sunshine Bisquit	43420	98.6	62.6	\$137.72	\$0.306
3465 General Mills	49677	196.3	160.3	\$352.66	\$0.784
3560 Verndale	48238	91.2	55.2	\$121.44	\$0.270
3633 Kroger Winchester	40391	327	291.0	\$640.20	\$1.423
3723 Michigan Dairy	48150	76.5	40.5	\$89.10	\$0.198
8003 Superior	44708	222.3	186.3	\$409.86	\$0.911
8008 Deans - Sharpville	16150	246.4	210.4	\$462.88	\$1.034
8009 DFA-Goshen	46526	110.4	74.4	\$163.68	\$0.364
8113 Crossroads	46219	221.5	185.5	\$408.10	\$0.907
8031 Toft	44871	122.5	86.5	\$190.30	\$0.423
8035 Pearl Valley	43824	224.5	188.5	\$414.70	\$0.922
8040 Allen	46852	85.4	49.4	\$108.68	\$0.242
8049 Farmers Cheese	16142	246.8	210.8	\$463.76	\$1.036
8054 Miceli	44107	181.3	145.3	\$319.66	\$0.710
8056 MMPA Constantine	49042	82.6	46.6	\$102.52	\$0.228
8084 United - Uniontown	15401	350.7	314.7	\$692.34	\$1.544
8096 Alpine	44690	204.2	168.2	\$370.04	\$0.822
8104 Michigan State Institute	49201	20.7	0.0	\$0.00	\$0.000
8109 Kroger Springdale	45246	221.1	185.1	\$407.22	\$0.905
8114 Tamarack	43055	220.1	184.1	\$405.02	\$0.900
8117 Sterling	43567	41.6	5.6	\$12.32	\$0.027
8125 Meadowbrook	16510	284.2	248.2	\$546.04	\$1.218
8129 Schenkle	46750	130.7	94.7	\$208.34	\$0.463
8144 MMPA Ovid	48866	91.8	55.8	\$122.76	\$0.273
8146 Diehl - Adrian	49221	27.1	0.0	\$0.00	\$0.000
8256 Dean Liberty	49631	169.4	133.4	\$293.48	\$0.652
8267 CF GR	49518	124.5	88.5	\$194.70	\$0.433
8325 McCartyville Reload		128.1	92.1	\$202.62	\$0.450
8345 Deutsch-Kase-Haus	46540	97.6	61.6	\$135.52	\$0.301
8366 Ragersville Cheese	44681	213.7	177.7	\$390.94	\$0.869
8406 Quality Dairy	48910	64.3	28.3	\$62.26	\$0.138
Rt 127 2004		19.4	0	0	\$0.000
2005		22.7	0	0	0

pmmb

pmmb

pmmb

pmmb

US On-Highway Fuel Prices
 Midwest Number 2 Diesel
 Energy Information Administration
 CY 2000 - date

Week	Date	US	Midwest	Week	Date	US	Midwest	Week	Date	US	Midwest
1	01/03/00	\$ 1.3080	\$ 1.3010	1	01/03/01	\$ 1.5220	\$ 1.4880	1	01/07/02	\$ 1.1680	\$ 1.1470
2	01/10/00	\$ 1.3070	\$ 1.2840	2	01/10/01	\$ 1.5200	\$ 1.4840	2	01/14/02	\$ 1.1580	\$ 1.1340
3	01/17/00	\$ 1.3070	\$ 1.2880	3	01/15/01	\$ 1.5090	\$ 1.4870	3	01/21/02	\$ 1.1400	\$ 1.1120
4	01/24/00	\$ 1.4160	\$ 1.3890	4	01/22/01	\$ 1.5280	\$ 1.5150	4	01/28/02	\$ 1.1440	\$ 1.1190
5	01/31/00	\$ 1.4390	\$ 1.3700	5	01/29/01	\$ 1.5390	\$ 1.5240	5	02/04/02	\$ 1.1440	\$ 1.1190
6	02/07/00	\$ 1.4700	\$ 1.4080	6	02/05/01	\$ 1.5200	\$ 1.5020	6	02/11/02	\$ 1.1630	\$ 1.1260
7	02/14/00	\$ 1.4560	\$ 1.4180	7	02/12/01	\$ 1.5180	\$ 1.5060	7	02/18/02	\$ 1.1560	\$ 1.1300
8	02/21/00	\$ 1.4560	\$ 1.4390	8	02/19/01	\$ 1.4800	\$ 1.4600	8	02/25/02	\$ 1.1540	\$ 1.1280
9	02/28/00	\$ 1.4810	\$ 1.4540	9	02/26/01	\$ 1.4510	\$ 1.4280	9	03/04/02	\$ 1.1730	\$ 1.1510
10	03/06/00	\$ 1.4800	\$ 1.4840	10	03/05/01	\$ 1.4200	\$ 1.3940	10	03/11/02	\$ 1.2160	\$ 1.1930
11	03/13/00	\$ 1.4860	\$ 1.4820	11	03/12/01	\$ 1.4060	\$ 1.3810	11	03/18/02	\$ 1.2510	\$ 1.2280
12	03/20/00	\$ 1.4780	\$ 1.4800	12	03/19/01	\$ 1.3920	\$ 1.3670	12	03/25/02	\$ 1.2810	\$ 1.2590
13	03/27/00	\$ 1.4510	\$ 1.4260	13	03/26/01	\$ 1.3780	\$ 1.3580	13	04/01/02	\$ 1.2850	\$ 1.2760
14	04/03/00	\$ 1.4420	\$ 1.4260	14	04/02/01	\$ 1.3910	\$ 1.3680	14	04/08/02	\$ 1.3230	\$ 1.3160
15	04/10/00	\$ 1.4160	\$ 1.4080	15	04/09/01	\$ 1.3970	\$ 1.3710	15	04/15/02	\$ 1.3200	\$ 1.3090
16	04/17/00	\$ 1.3980	\$ 1.3820	16	04/16/01	\$ 1.4370	\$ 1.4240	16	04/22/02	\$ 1.3040	\$ 1.2850
17	04/24/00	\$ 1.4280	\$ 1.4400	17	04/23/01	\$ 1.4420	\$ 1.4240	17	04/29/02	\$ 1.3020	\$ 1.2810
18	05/01/00	\$ 1.4180	\$ 1.4230	18	04/30/01	\$ 1.4420	\$ 1.4230	18	05/06/02	\$ 1.3050	\$ 1.2830
19	05/08/00	\$ 1.4020	\$ 1.4000	19	05/07/01	\$ 1.4700	\$ 1.4890	19	05/13/02	\$ 1.2920	\$ 1.2770
20	05/15/00	\$ 1.4150	\$ 1.4220	20	05/14/01	\$ 1.4610	\$ 1.5350	20	05/20/02	\$ 1.3090	\$ 1.2940
21	05/22/00	\$ 1.4320	\$ 1.4420	21	05/21/01	\$ 1.4840	\$ 1.5350	21	05/27/02	\$ 1.3080	\$ 1.2920
22	05/29/00	\$ 1.4310	\$ 1.4410	22	05/28/01	\$ 1.5280	\$ 1.5880	22	06/03/02	\$ 1.3000	\$ 1.2830
23	06/05/00	\$ 1.4180	\$ 1.4240	23	06/04/01	\$ 1.5140	\$ 1.5610	23	06/10/02	\$ 1.2860	\$ 1.2610
24	06/12/00	\$ 1.4110	\$ 1.4100	24	06/11/01	\$ 1.4860	\$ 1.5110	24	06/17/02	\$ 1.2750	\$ 1.2530
25	06/19/00	\$ 1.4230	\$ 1.4350	25	06/18/01	\$ 1.4800	\$ 1.4820	25	06/24/02	\$ 1.2810	\$ 1.2600
26	06/26/00	\$ 1.4320	\$ 1.4420	26	06/25/01	\$ 1.4470	\$ 1.4240	26	07/01/02	\$ 1.2890	\$ 1.2730
27	07/03/00	\$ 1.4530	\$ 1.4530	27	07/02/01	\$ 1.4670	\$ 1.3710	27	07/08/02	\$ 1.2840	\$ 1.2750
28	07/10/00	\$ 1.4490	\$ 1.4420	28	07/09/01	\$ 1.3920	\$ 1.3650	28	07/15/02	\$ 1.3000	\$ 1.2890
29	07/17/00	\$ 1.4350	\$ 1.4220	29	07/16/01	\$ 1.3800	\$ 1.3590	29	07/22/02	\$ 1.3110	\$ 1.3020
30	07/24/00	\$ 1.4240	\$ 1.4070	30	07/23/01	\$ 1.3480	\$ 1.3210	30	07/29/02	\$ 1.3030	\$ 1.2910
31	07/31/00	\$ 1.4080	\$ 1.3780	31	07/30/01	\$ 1.3470	\$ 1.3320	31	08/05/02	\$ 1.3040	\$ 1.2880
32	08/07/00	\$ 1.4100	\$ 1.3920	32	08/06/01	\$ 1.3450	\$ 1.3370	32	08/12/02	\$ 1.3030	\$ 1.2890
33	08/14/00	\$ 1.4470	\$ 1.4230	33	08/13/01	\$ 1.3670	\$ 1.3680	33	08/19/02	\$ 1.3330	\$ 1.3160
34	08/21/00	\$ 1.4710	\$ 1.4410	34	08/20/01	\$ 1.3840	\$ 1.4090	34	08/26/02	\$ 1.3700	\$ 1.3610
35	08/28/00	\$ 1.5360	\$ 1.4980	35	08/27/01	\$ 1.4520	\$ 1.5210	35	09/02/02	\$ 1.3880	\$ 1.3800
36	09/04/00	\$ 1.5090	\$ 1.5000	36	09/03/01	\$ 1.4880	\$ 1.5580	36	09/09/02	\$ 1.3980	\$ 1.3810
37	09/11/00	\$ 1.5290	\$ 1.5020	37	09/10/01	\$ 1.4820	\$ 1.5500	37	09/16/02	\$ 1.4140	\$ 1.3990
38	09/18/00	\$ 1.5530	\$ 1.5280	38	09/17/01	\$ 1.5270	\$ 1.5940	38	09/23/02	\$ 1.4170	\$ 1.4080
39	09/25/00	\$ 1.5670	\$ 1.5280	39	09/24/01	\$ 1.4730	\$ 1.5150	39	09/30/02	\$ 1.4380	\$ 1.4340
40	10/02/00	\$ 1.6250	\$ 1.5890	40	10/01/01	\$ 1.5900	\$ 1.4120	40	10/07/02	\$ 1.4600	\$ 1.4580
41	10/09/00	\$ 1.6140	\$ 1.5720	41	10/08/01	\$ 1.3710	\$ 1.3680	41	10/14/02	\$ 1.4610	\$ 1.4590
42	10/16/00	\$ 1.6700	\$ 1.6430	42	10/15/01	\$ 1.3530	\$ 1.3730	42	10/21/02	\$ 1.4680	\$ 1.4710
43	10/23/00	\$ 1.6480	\$ 1.6110	43	10/22/01	\$ 1.3180	\$ 1.3280	43	10/28/02	\$ 1.4560	\$ 1.4570
44	10/30/00	\$ 1.6280	\$ 1.5900	44	10/29/01	\$ 1.3100	\$ 1.3230	44	11/04/02	\$ 1.4420	\$ 1.4410
45	11/06/00	\$ 1.6100	\$ 1.5700	45	11/05/01	\$ 1.2910	\$ 1.3000	45	11/11/02	\$ 1.4270	\$ 1.4250
46	11/13/00	\$ 1.6030	\$ 1.5610	46	11/12/01	\$ 1.2680	\$ 1.2750	46	11/18/02	\$ 1.4060	\$ 1.4060
47	11/20/00	\$ 1.6270	\$ 1.5820	47	11/19/01	\$ 1.2520	\$ 1.2600	47	11/25/02	\$ 1.4050	\$ 1.4120
48	11/27/00	\$ 1.6450	\$ 1.6080	48	11/26/01	\$ 1.2230	\$ 1.2300	48	12/02/02	\$ 1.4070	\$ 1.4100
49	12/04/00	\$ 1.6220	\$ 1.5770	49	12/03/01	\$ 1.1640	\$ 1.1980	49	12/09/02	\$ 1.4050	\$ 1.4080
50	12/11/00	\$ 1.5770	\$ 1.5190	50	12/10/01	\$ 1.1730	\$ 1.1740	50	12/16/02	\$ 1.4010	\$ 1.3990
51	12/18/00	\$ 1.5450	\$ 1.4930	51	12/17/01	\$ 1.1430	\$ 1.1380	51	12/23/02	\$ 1.4400	\$ 1.4380
52	12/25/00	\$ 1.5160	\$ 1.4700	52	12/24/01	\$ 1.1540	\$ 1.1400	52	12/30/02	\$ 1.4910	\$ 1.4930
				53	12/31/01	\$ 1.1690	\$ 1.1480				

US On-Highway Fuel Prices
 Midwest Number 2 Diesel
 Energy Information Administration
 CY 2000 - date

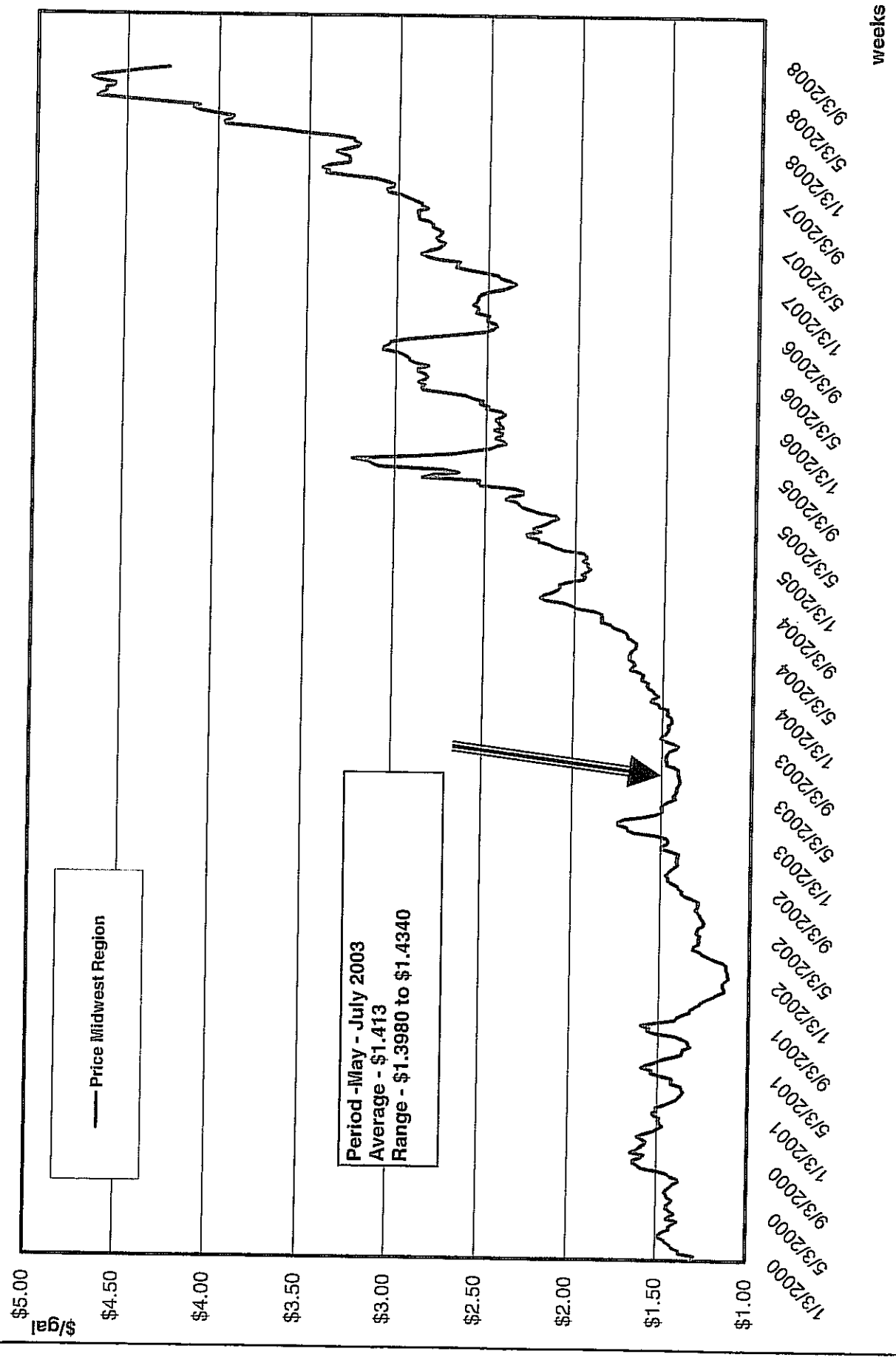
1	01/08/03	\$ 1.5010	\$ 1.4950	1	01/05/04	\$ 1.5030	\$ 1.4730	1	01/03/05	\$ 1.9570	\$ 1.9290
2	01/13/03	\$ 1.4780	\$ 1.4670	2	01/12/04	\$ 1.5510	\$ 1.5180	2	01/10/05	\$ 1.9340	\$ 1.9110
3	01/20/03	\$ 1.4800	\$ 1.4580	3	01/19/04	\$ 1.5590	\$ 1.5260	3	01/17/05	\$ 1.9520	\$ 1.9280
4	01/27/03	\$ 1.4920	\$ 1.4720	4	01/26/04	\$ 1.5910	\$ 1.5640	4	01/24/05	\$ 1.9590	\$ 1.9280
5	02/03/03	\$ 1.5420	\$ 1.5320	5	02/02/04	\$ 1.5910	\$ 1.5610	5	01/31/05	\$ 1.9920	\$ 1.9540
6	02/10/03	\$ 1.5620	\$ 1.5520	6	02/09/04	\$ 1.5980	\$ 1.5250	6	02/07/05	\$ 1.9930	\$ 1.9350
7	02/17/03	\$ 1.7040	\$ 1.6810	7	02/16/04	\$ 1.5840	\$ 1.5440	7	02/14/05	\$ 1.9860	\$ 1.9360
8	02/24/03	\$ 1.7080	\$ 1.6880	8	02/23/04	\$ 1.6950	\$ 1.5550	8	02/21/05	\$ 2.0200	\$ 1.9530
9	03/03/03	\$ 1.7530	\$ 1.7350	9	03/01/04	\$ 1.6160	\$ 1.5790	9	02/28/05	\$ 2.1180	\$ 2.0640
10	03/10/03	\$ 1.7710	\$ 1.7380	10	03/08/04	\$ 1.6280	\$ 1.5890	10	03/07/05	\$ 2.1680	\$ 2.1130
11	03/17/03	\$ 1.7520	\$ 1.7080	11	03/15/04	\$ 1.6170	\$ 1.5820	11	03/14/05	\$ 2.1940	\$ 2.1400
12	03/24/03	\$ 1.8620	\$ 1.5960	12	03/22/04	\$ 1.8410	\$ 1.6150	12	03/21/05	\$ 2.2440	\$ 2.1980
13	03/31/03	\$ 1.8020	\$ 1.5260	13	03/29/04	\$ 1.8420	\$ 1.6180	13	03/28/05	\$ 2.2490	\$ 2.2030
14	04/07/03	\$ 1.5540	\$ 1.4980	14	04/05/04	\$ 1.6480	\$ 1.5100	14	04/04/05	\$ 2.3030	\$ 2.2580
15	04/14/03	\$ 1.5380	\$ 1.4980	15	04/12/04	\$ 1.6790	\$ 1.6310	15	04/11/05	\$ 2.3160	\$ 2.2830
16	04/21/03	\$ 1.5290	\$ 1.5000	16	04/19/04	\$ 1.7240	\$ 1.6790	16	04/18/05	\$ 2.2590	\$ 2.1940
17	04/28/03	\$ 1.5980	\$ 1.4680	17	04/26/04	\$ 1.7180	\$ 1.6700	17	04/25/05	\$ 2.2890	\$ 2.2300
18	05/05/03	\$ 1.4840	\$ 1.4600	18	05/03/04	\$ 1.7170	\$ 1.6570	18	05/02/05	\$ 2.2920	\$ 2.1940
19	05/12/03	\$ 1.4440	\$ 1.4240	19	05/10/04	\$ 1.7450	\$ 1.6670	19	05/09/05	\$ 2.2270	\$ 2.1670
20	05/19/03	\$ 1.4430	\$ 1.4340	20	05/17/04	\$ 1.7630	\$ 1.6880	20	05/16/05	\$ 2.1800	\$ 2.1290
21	05/26/03	\$ 1.4340	\$ 1.4240	21	05/24/04	\$ 1.7910	\$ 1.6970	21	05/23/05	\$ 2.1680	\$ 2.0970
22	06/02/03	\$ 1.4230	\$ 1.4160	22	05/31/04	\$ 1.7460	\$ 1.6840	22	05/30/05	\$ 2.1600	\$ 2.1110
23	06/09/03	\$ 1.4220	\$ 1.4180	23	06/07/04	\$ 1.7340	\$ 1.6760	23	06/06/05	\$ 2.2340	\$ 2.1800
24	06/16/03	\$ 1.4320	\$ 1.4100	24	06/14/04	\$ 1.7110	\$ 1.6570	24	06/13/05	\$ 2.2780	\$ 2.2480
25	06/23/03	\$ 1.4230	\$ 1.4010	25	06/21/04	\$ 1.7000	\$ 1.6520	25	06/20/05	\$ 2.3130	\$ 2.2840
26	06/30/03	\$ 1.4200	\$ 1.3980	26	06/28/04	\$ 1.7000	\$ 1.6500	26	06/27/05	\$ 2.3380	\$ 2.3140
27	07/07/03	\$ 1.4280	\$ 1.4040	27	07/05/04	\$ 1.7160	\$ 1.6700	27	07/04/05	\$ 2.3480	\$ 2.3160
28	07/14/03	\$ 1.4350	\$ 1.4080	28	07/12/04	\$ 1.7400	\$ 1.6940	28	07/11/05	\$ 2.4080	\$ 2.3840
29	07/21/03	\$ 1.4390	\$ 1.4100	29	07/19/04	\$ 1.7440	\$ 1.6990	29	07/18/05	\$ 2.3920	\$ 2.3610
30	07/28/03	\$ 1.4380	\$ 1.4090	30	07/26/04	\$ 1.7540	\$ 1.7090	30	07/25/05	\$ 2.3420	\$ 2.2920
31	08/04/03	\$ 1.4630	\$ 1.4300	31	08/02/04	\$ 1.7900	\$ 1.7390	31	08/01/05	\$ 2.3480	\$ 2.2920
32	08/11/03	\$ 1.4920	\$ 1.4740	32	08/09/04	\$ 1.8140	\$ 1.7810	32	08/08/05	\$ 2.4070	\$ 2.3360
33	08/18/03	\$ 1.4980	\$ 1.4740	33	08/16/04	\$ 1.8250	\$ 1.7970	33	08/15/05	\$ 2.5670	\$ 2.5240
34	08/25/03	\$ 1.5030	\$ 1.4790	34	08/23/04	\$ 1.8740	\$ 1.8460	34	08/22/05	\$ 2.5680	\$ 2.5400
35	09/01/03	\$ 1.5010	\$ 1.4790	35	08/30/04	\$ 1.8710	\$ 1.8440	35	08/29/05	\$ 2.5900	\$ 2.5320
36	09/08/03	\$ 1.4880	\$ 1.4720	36	09/06/04	\$ 1.8990	\$ 1.8450	36	09/05/05	\$ 2.5980	\$ 2.6430
37	09/15/03	\$ 1.4710	\$ 1.4600	37	09/13/04	\$ 1.8740	\$ 1.8470	37	09/12/05	\$ 2.8470	\$ 2.7820
38	09/22/03	\$ 1.4440	\$ 1.4280	38	09/20/04	\$ 1.9120	\$ 1.8820	38	09/19/05	\$ 2.7320	\$ 2.6480
39	09/29/03	\$ 1.4280	\$ 1.4110	39	09/27/04	\$ 2.0120	\$ 1.9820	39	09/26/05	\$ 2.7980	\$ 2.7380
40	10/06/03	\$ 1.4450	\$ 1.4350	40	10/04/04	\$ 2.0530	\$ 2.0190	40	10/03/05	\$ 3.1440	\$ 3.0830
41	10/13/03	\$ 1.4830	\$ 1.4660	41	10/11/04	\$ 2.0920	\$ 2.0560	41	10/10/05	\$ 3.1500	\$ 3.1230
42	10/20/03	\$ 1.5020	\$ 1.5080	42	10/18/04	\$ 2.1800	\$ 2.1610	42	10/17/05	\$ 3.1480	\$ 3.1440
43	10/27/03	\$ 1.4050	\$ 1.4880	43	10/25/04	\$ 2.2120	\$ 2.1850	43	10/24/05	\$ 3.1570	\$ 3.2350
44	11/03/03	\$ 1.4610	\$ 1.4780	44	11/01/04	\$ 2.2050	\$ 2.1720	44	10/31/05	\$ 2.8780	\$ 2.9070
45	11/10/03	\$ 1.4790	\$ 1.4670	45	11/08/04	\$ 2.1630	\$ 2.1230	45	11/07/05	\$ 2.6980	\$ 2.6710
46	11/17/03	\$ 1.4810	\$ 1.4850	46	11/15/04	\$ 2.1320	\$ 2.0980	46	11/14/05	\$ 2.8020	\$ 2.5750
47	11/24/03	\$ 1.4910	\$ 1.4890	47	11/22/04	\$ 2.1160	\$ 2.0830	47	11/21/05	\$ 2.5130	\$ 2.4770
48	12/01/03	\$ 1.4780	\$ 1.4480	48	11/29/04	\$ 2.1180	\$ 2.0860	48	11/28/05	\$ 2.4790	\$ 2.4420
49	12/08/03	\$ 1.4610	\$ 1.4480	49	12/06/04	\$ 2.0690	\$ 2.0330	49	12/05/05	\$ 2.4250	\$ 2.3900
50	12/15/03	\$ 1.4850	\$ 1.4540	50	12/13/04	\$ 1.9970	\$ 1.9630	50	12/12/05	\$ 2.4390	\$ 2.4090
51	12/22/03	\$ 1.5940	\$ 1.4760	51	12/20/04	\$ 1.9840	\$ 1.8440	51	12/19/05	\$ 2.4820	\$ 2.4430
52	12/29/03	\$ 1.5020	\$ 1.4720	52	12/27/04	\$ 1.9670	\$ 1.9690	52	12/26/05	\$ 2.4480	\$ 2.4200

US On-Highway Fuel Prices
 Midwest Number 2 Diesel
 Energy Information Administration
 CY 2000 - date

1	01/02/00	\$ 2.4420	\$ 2.4120	1	01/01/07	\$ 2.5800	\$ 2.6340	1	01/07/09	\$ 3.3760	\$ 3.3450
2	01/09/00	\$ 2.4650	\$ 2.4510	2	01/08/07	\$ 2.5370	\$ 2.4830	2	01/14/09	\$ 3.3260	\$ 3.2880
3	01/16/00	\$ 2.4490	\$ 2.4000	3	01/15/07	\$ 2.4830	\$ 2.4080	3	01/21/09	\$ 3.2700	\$ 3.2280
4	01/23/00	\$ 2.4720	\$ 2.4230	4	01/22/07	\$ 2.4300	\$ 2.3710	4	01/28/09	\$ 3.2590	\$ 3.2180
5	01/30/00	\$ 2.4880	\$ 2.4310	5	01/29/07	\$ 2.4130	\$ 2.3490	5	02/04/09	\$ 3.2800	\$ 3.2430
6	02/06/00	\$ 2.4990	\$ 2.4450	6	02/05/07	\$ 2.4350	\$ 2.3770	6	02/11/09	\$ 3.2850	\$ 3.2490
7	02/13/00	\$ 2.4750	\$ 2.4190	7	02/12/07	\$ 2.4760	\$ 2.4290	7	02/18/09	\$ 3.3950	\$ 3.3650
8	02/20/00	\$ 2.4550	\$ 2.3980	8	02/19/07	\$ 2.4910	\$ 2.4440	8	02/25/09	\$ 3.5520	\$ 3.5250
9	02/27/00	\$ 2.4710	\$ 2.4170	9	02/26/07	\$ 2.5510	\$ 2.5230	9	03/03/09	\$ 3.6580	\$ 3.6390
10	03/06/00	\$ 2.5450	\$ 2.5000	10	03/05/07	\$ 2.6250	\$ 2.6080	10	03/10/09	\$ 3.8180	\$ 3.7840
11	03/13/00	\$ 2.5430	\$ 2.4910	11	03/12/07	\$ 2.6650	\$ 2.6730	11	03/17/09	\$ 3.9740	\$ 3.9580
12	03/20/00	\$ 2.5810	\$ 2.5330	12	03/19/07	\$ 2.6810	\$ 2.6660	12	03/24/09	\$ 3.9990	\$ 3.9640
13	03/27/00	\$ 2.5950	\$ 2.5230	13	03/26/07	\$ 2.6780	\$ 2.6650	13	03/31/09	\$ 3.9640	\$ 3.9290
14	04/03/00	\$ 2.6170	\$ 2.5780	14	04/02/07	\$ 2.7900	\$ 2.7800	14	04/07/09	\$ 3.9550	\$ 3.9170
15	04/10/00	\$ 2.6540	\$ 2.6140	15	04/09/07	\$ 2.8400	\$ 2.8350	15	04/14/09	\$ 4.0590	\$ 4.0130
16	04/17/00	\$ 2.7650	\$ 2.7350	16	04/16/07	\$ 2.8770	\$ 2.8640	16	04/21/09	\$ 4.1430	\$ 4.0980
17	04/24/00	\$ 2.8700	\$ 2.8470	17	04/23/07	\$ 2.8510	\$ 2.8310	17	04/28/09	\$ 4.1770	\$ 4.1330
18	05/01/00	\$ 2.8980	\$ 2.8530	18	04/30/07	\$ 2.8110	\$ 2.7750	18	05/05/09	\$ 4.1490	\$ 4.1010
19	05/08/00	\$ 2.8970	\$ 2.8410	19	05/07/07	\$ 2.7920	\$ 2.7540	19	05/12/09	\$ 4.3310	\$ 4.2980
20	05/15/00	\$ 2.9200	\$ 2.8700	20	05/14/07	\$ 2.7730	\$ 2.7400	20	05/19/09	\$ 4.4970	\$ 4.4630
21	05/22/00	\$ 2.8880	\$ 2.8380	21	05/21/07	\$ 2.8030	\$ 2.7730	21	05/26/09	\$ 4.7230	\$ 4.6870
22	05/29/00	\$ 2.8920	\$ 2.8240	22	05/28/07	\$ 2.8170	\$ 2.7830	22	06/02/09	\$ 4.7070	\$ 4.6430
23	06/05/00	\$ 2.8900	\$ 2.8370	23	06/04/07	\$ 2.7680	\$ 2.7640	23	06/09/09	\$ 4.6920	\$ 4.6150
24	06/12/00	\$ 2.9180	\$ 2.8740	24	06/11/07	\$ 2.7820	\$ 2.7830	24	06/16/09	\$ 4.6920	\$ 4.6180
25	06/19/00	\$ 2.9150	\$ 2.8730	25	06/18/07	\$ 2.8050	\$ 2.7740	25	06/23/09	\$ 4.6480	\$ 4.5740
26	06/26/00	\$ 2.8870	\$ 2.8190	26	06/25/07	\$ 2.8350	\$ 2.8080	26	06/30/09	\$ 4.6450	\$ 4.5710
27	07/03/00	\$ 2.8880	\$ 2.8670	27	07/02/07	\$ 2.8280	\$ 2.8050	27	07/07/09	\$ 4.7270	\$ 4.6540
28	07/10/00	\$ 2.9180	\$ 2.8190	28	07/09/07	\$ 2.8480	\$ 2.8230	28	07/14/09	\$ 4.7640	\$ 4.6990
29	07/17/00	\$ 2.9250	\$ 2.8270	29	07/16/07	\$ 2.8880	\$ 2.8780	29	07/21/09	\$ 4.7180	\$ 4.6480
30	07/24/00	\$ 2.9480	\$ 2.9510	30	07/23/07	\$ 2.8890	\$ 2.8820	30	07/28/09	\$ 4.6030	\$ 4.5180
31	07/31/00	\$ 2.9800	\$ 2.9880	31	07/30/07	\$ 2.8680	\$ 2.8650	31	08/04/09	\$ 4.5020	\$ 4.4180
32	08/07/00	\$ 3.0550	\$ 3.0700	32	08/06/07	\$ 2.8880	\$ 2.8870	32	08/11/09	\$ 4.3530	\$ 4.2870
33	08/14/00	\$ 3.0650	\$ 3.0850	33	08/13/07	\$ 2.8470	\$ 2.8350	33	08/18/09		
34	08/21/00	\$ 3.0330	\$ 3.0410	34	08/20/07	\$ 2.8880	\$ 2.8840	34	08/25/09	CY 2008 AVE	\$ 4.0516
35	08/28/00	\$ 3.0270	\$ 3.0280	35	08/27/07	\$ 2.8830	\$ 2.8700	35	09/01/09		
36	09/04/00	\$ 2.9670	\$ 2.9370	36	09/03/07	\$ 2.8930	\$ 2.8100	36	09/08/09		
37	09/11/00	\$ 2.8570	\$ 2.7870	37	09/10/07	\$ 2.9240	\$ 2.9420	37	09/15/09		
38	09/18/00	\$ 2.7130	\$ 2.8240	38	09/17/07	\$ 2.9940	\$ 2.9640	38	09/22/09		
39	09/25/00	\$ 2.5850	\$ 2.9080	39	09/24/07	\$ 3.0320	\$ 3.0540	39	09/29/09		
40	10/02/00	\$ 2.5480	\$ 2.4670	40	10/01/07	\$ 3.0480	\$ 3.0610	40	10/06/09		
41	10/09/00	\$ 2.5000	\$ 2.4480	41	10/08/07	\$ 3.0350	\$ 3.0280	41	10/13/09		
42	10/16/00	\$ 2.5030	\$ 2.4580	42	10/15/07	\$ 3.0380	\$ 3.0250	42	10/20/09		
43	10/23/00	\$ 2.5240	\$ 2.5020	43	10/22/07	\$ 3.0840	\$ 3.0670	43	10/27/09		
44	10/30/00	\$ 2.5170	\$ 2.5010	44	10/29/07	\$ 3.1570	\$ 3.1220	44	11/03/09		
45	11/06/00	\$ 2.5050	\$ 2.4930	45	11/05/07	\$ 3.3030	\$ 3.2780	45	11/10/09		
46	11/13/00	\$ 2.5520	\$ 2.5620	46	11/12/07	\$ 3.4250	\$ 3.4030	46	11/17/09		
47	11/20/00	\$ 2.5530	\$ 2.5540	47	11/19/07	\$ 3.4100	\$ 3.3890	47	11/24/09		
48	11/27/00	\$ 2.5870	\$ 2.5540	48	11/26/07	\$ 3.4440	\$ 3.4230	48	12/01/09		
49	12/04/00	\$ 2.8180	\$ 2.5780	49	12/03/07	\$ 3.4160	\$ 3.3850	49	12/08/09		
50	12/11/00	\$ 2.8210	\$ 2.5830	50	12/10/07	\$ 3.3250	\$ 3.2780	50	12/15/09		
51	12/18/00	\$ 2.6060	\$ 2.5850	51	12/17/07	\$ 3.3080	\$ 3.2710	51	12/22/09		
52	12/25/00	\$ 2.5880	\$ 2.5800	52	12/24/07	\$ 3.3080	\$ 3.2770	52	12/29/09		
				53	12/31/07	\$ 3.2450	\$ 3.3090				

<http://anta.eia.doe.gov/cgi/info.cgi?easdiesel>

US On-Highway Fuel Prices Midwest Number 2 Diesel - EIA - 2000 - Date



Location Adjustment Matrix

Supply Points	Eastside										Differential	
	Anderson IN	Smith IN	Kroger Co. IN	Trauth KY	UDF OH	Meyer OH	Reiter OH	Tamarack OH	Broughton OH	United WV		
By County seat/zip codes	\$2.00	\$2.00	\$2.00	\$2.20	\$2.20	\$2.20	\$2.00	\$2.00	\$2.00	\$2.20	\$2.20	
Clinton County, Michigan	\$ 0.20	\$ 0.20	\$ 0.20	\$ 0.40	\$ 0.40	\$ 0.40	\$ 0.20	\$ 0.20	\$ 0.20	\$ 0.40	\$ 0.20	\$ 0.40
Huron County, Michigan	\$ 0.20	\$ 0.20	\$ 0.20	\$ 0.40	\$ 0.40	\$ 0.40	\$ 0.20	\$ 0.20	\$ 0.20	\$ 0.40	\$ 0.20	\$ 0.40
Lenawee County, Michigan	\$ 0.20	\$ 0.20	\$ 0.20	\$ 0.40	\$ 0.40	\$ 0.40	\$ 0.20	\$ 0.20	\$ 0.20	\$ 0.40	\$ 0.20	\$ 0.40
Missaukee County, Michigan	\$ 0.20	\$ 0.20	\$ 0.20	\$ 0.40	\$ 0.40	\$ 0.40	\$ 0.20	\$ 0.20	\$ 0.20	\$ 0.40	\$ 0.20	\$ 0.40
Ottawa County, Michigan	\$ 0.20	\$ 0.20	\$ 0.20	\$ 0.40	\$ 0.40	\$ 0.40	\$ 0.20	\$ 0.20	\$ 0.20	\$ 0.40	\$ 0.20	\$ 0.40
Elkhart County, Indiana	\$ 0.20	\$ 0.20	\$ 0.20	\$ 0.40	\$ 0.40	\$ 0.40	\$ 0.20	\$ 0.20	\$ 0.20	\$ 0.40	\$ 0.20	\$ 0.40
Jasper County, Indiana	\$ 0.20	\$ 0.20	\$ 0.20	\$ 0.40	\$ 0.40	\$ 0.40	\$ 0.20	\$ 0.20	\$ 0.20	\$ 0.40	\$ 0.20	\$ 0.40
Mercer County, Ohio	\$ -	\$ -	\$ -	\$ 0.20	\$ 0.20	\$ 0.20	\$ -	\$ -	\$ -	\$ 0.20	\$ -	\$ 0.20
Wayne County, Ohio	\$ -	\$ -	\$ -	\$ 0.20	\$ 0.20	\$ 0.20	\$ -	\$ -	\$ -	\$ 0.20	\$ -	\$ 0.20
Chautauqua County, New York	\$ (0.10)	\$ (0.10)	\$ (0.10)	\$ 0.10	\$ 0.10	\$ 0.10	\$ (0.10)	\$ (0.10)	\$ (0.10)	\$ 0.10	\$ (0.10)	\$ 0.10
Crawford County, Pennsylvania	\$ (0.10)	\$ (0.10)	\$ (0.10)	\$ 0.10	\$ 0.10	\$ 0.10	\$ (0.10)	\$ (0.10)	\$ (0.10)	\$ 0.10	\$ (0.10)	\$ 0.10

Point-to-Point Miles Matrix 1/

Supply Points		Eastside	Smith	Kroger Co.	Trauth	UDF	Meyer	Reiter	Tamarack	Broughton	United
		Anderson IN	Richmond IN	Indianapolis IN	Newport KY	Cincinnati OH	Cincinnati OH	Springfield OH	Newark OH	Marietta OH	Charleston WV
By County seat zip codes	Differential	\$2.00	\$2.00	\$2.00	\$2.20	\$2.20	\$2.20	\$2.00	\$2.00	\$2.00	\$2.20
Clinton County, Michigan	\$1.80	235	252	272	339	328	323	257	285	374	426
Huron County, Michigan	\$1.80	359	370	395	397	385	381	314	343	432	483
Lenawee County, Michigan	\$1.80	184	214	220	241	229	225	158	187	276	327
Missaukee County, Michigan	\$1.80	354	370	390	455	443	439	373	401	490	541
Ottawa County, Michigan	\$1.80	245	306	249	358	355	355	348	365	454	506
Elkhart County, Indiana	\$1.80	135	171	172	251	240	236	205	239	344	374
Jasper County, Indiana	\$1.80	134	171	113	222	218	218	230	315	406	405
Mercer County, Ohio	\$2.00	82	67	130	139	127	123	92	130	236	266
Wayne County, Ohio	\$2.00	256	200	263	214	205	202	144	67	118	203
Chautauqua County, New York	\$2.10	432	375	439	390	380	377	319	260	285	370
Crawford County, Pennsylvania	\$2.10	394	337	401	352	342	341	281	222	225	314

1/ Mileage based on calculations generated from PC Miller version 21.0 ALK Technologies.

Hauling Cost Matrix

Supply Points		Eastside	Smith	Kroger Co.	Trauth	UDF	Meyer	Reiter	Tamarack	Broughton	United
		Anderson IN	Richmond IN	Indianapolis IN	Newport KY	Cincinnati OH	Cincinnati OH	Springfield OH	Newark OH	Marietta OH	Charleston WV
By County seat zip codes	Differential	\$2.00	\$2.00	\$2.00	\$2.20	\$2.20	\$2.20	\$2.00	\$2.00	\$2.00	\$2.20
Clinton County, Michigan	\$1.80	\$ 1.59	\$ 1.70	\$ 1.83	\$ 2.29	\$ 2.21	\$ 2.18	\$ 1.73	\$ 1.92	\$ 2.52	\$ 2.87
Huron County, Michigan	\$1.80	\$ 2.42	\$ 2.49	\$ 2.66	\$ 2.67	\$ 2.60	\$ 2.57	\$ 2.12	\$ 2.31	\$ 2.91	\$ 3.26
Lenawee County, Michigan	\$1.80	\$ 1.24	\$ 1.44	\$ 1.48	\$ 1.62	\$ 1.54	\$ 1.52	\$ 1.07	\$ 1.26	\$ 1.86	\$ 2.20
Missaukee County, Michigan	\$1.80	\$ 2.38	\$ 2.49	\$ 2.63	\$ 3.07	\$ 2.99	\$ 2.96	\$ 2.51	\$ 2.70	\$ 3.30	\$ 3.65
Ottawa County, Michigan	\$1.80	\$ 1.65	\$ 2.06	\$ 1.68	\$ 2.41	\$ 2.39	\$ 2.39	\$ 2.35	\$ 2.46	\$ 3.06	\$ 3.41
Elkhart County, Indiana	\$1.80	\$ 0.91	\$ 1.15	\$ 1.16	\$ 1.69	\$ 1.61	\$ 1.59	\$ 1.38	\$ 1.61	\$ 2.32	\$ 2.52
Jasper County, Indiana	\$1.80	\$ 0.90	\$ 1.15	\$ 0.76	\$ 1.49	\$ 1.47	\$ 1.47	\$ 1.55	\$ 2.12	\$ 2.74	\$ 2.73
Mercer County, Ohio	\$2.00	\$ 0.55	\$ 0.45	\$ 0.88	\$ 0.93	\$ 0.85	\$ 0.83	\$ 0.62	\$ 0.88	\$ 1.59	\$ 1.79
Wayne County, Ohio	\$2.00	\$ 1.72	\$ 1.34	\$ 1.77	\$ 1.44	\$ 1.38	\$ 1.36	\$ 0.97	\$ 0.45	\$ 0.80	\$ 1.37
Chautauqua County, New York	\$2.10	\$ 2.91	\$ 2.53	\$ 2.96	\$ 2.63	\$ 2.56	\$ 2.54	\$ 2.15	\$ 1.75	\$ 1.92	\$ 2.49
Crawford County, Pennsylvania	\$2.10	\$ 2.65	\$ 2.27	\$ 2.70	\$ 2.37	\$ 2.31	\$ 2.29	\$ 1.90	\$ 1.49	\$ 1.51	\$ 2.12

Base Rate Per Mle \$2.20
 Fuel Adjustor 47%
 Fuel Adjusted Rate \$3.23
 Tank Size 48,000

Hauling Cost minus Location Adjustment

Supply Points	Differential	Eastside	Smith	Kroger Co.	Trauth	UDF	Meyer	Reiter	Tamarack	Broughton	United	Average
		Anderson IN	Richmond IN	Indianapolis IN	Newport KY	Cincinnati OH	Cincinnati OH	Springfield OH	Newark OH	Marietta OH	Charleston WV	
By County seat zip codes		\$2.00	\$2.00	\$2.00	\$2.20	\$2.20	\$2.20	\$2.00	\$2.00	\$2.00	\$2.20	
Clinton County, Michigan	\$1.80	\$ 1.39	\$ 1.50	\$ 1.63	\$ 1.89	\$ 1.81	\$ 1.78	\$ 1.53	\$ 1.72	\$ 2.32	\$ 2.47	\$ 1.80
Huron County, Michigan	\$1.80	\$ 2.22	\$ 2.29	\$ 2.46	\$ 2.27	\$ 2.20	\$ 2.17	\$ 1.92	\$ 2.11	\$ 2.71	\$ 2.86	\$ 2.32
Lenawee County, Michigan	\$1.80	\$ 1.04	\$ 1.24	\$ 1.28	\$ 1.22	\$ 1.14	\$ 1.12	\$ 0.87	\$ 1.06	\$ 1.66	\$ 1.80	\$ 1.24
Missaukee County, Michigan	\$1.80	\$ 2.18	\$ 2.29	\$ 2.43	\$ 2.67	\$ 2.59	\$ 2.56	\$ 2.31	\$ 2.50	\$ 3.10	\$ 3.25	\$ 2.59
Ottawa County, Michigan	\$1.80	\$ 1.45	\$ 1.86	\$ 1.48	\$ 2.01	\$ 1.99	\$ 1.99	\$ 2.15	\$ 2.26	\$ 2.86	\$ 3.01	\$ 2.11
Eikhart County, Indiana	\$1.80	\$ 0.71	\$ 0.95	\$ 0.96	\$ 1.29	\$ 1.21	\$ 1.19	\$ 1.18	\$ 1.41	\$ 2.12	\$ 2.12	\$ 1.31
Jasper County, Indiana	\$1.80	\$ 0.70	\$ 0.95	\$ 0.66	\$ 1.09	\$ 1.07	\$ 1.07	\$ 1.35	\$ 1.92	\$ 2.54	\$ 2.33	\$ 1.36
Mercer County, Ohio	\$2.00	\$ 0.55	\$ 0.45	\$ 0.88	\$ 0.73	\$ 0.65	\$ 0.63	\$ 0.62	\$ 0.88	\$ 1.59	\$ 1.59	\$ 0.86
Wayne County, Ohio	\$2.00	\$ 1.72	\$ 1.34	\$ 1.77	\$ 1.24	\$ 1.18	\$ 1.16	\$ 0.97	\$ 0.45	\$ 0.80	\$ 1.17	\$ 1.18
Chautauqua County, New York	\$2.10	\$ 3.01	\$ 2.63	\$ 3.06	\$ 2.53	\$ 2.46	\$ 2.44	\$ 2.25	\$ 1.85	\$ 2.02	\$ 2.39	\$ 2.46
Crawford County, Pennsylvania	\$2.10	\$ 2.75	\$ 2.37	\$ 2.80	\$ 2.27	\$ 2.21	\$ 2.19	\$ 2.00	\$ 1.59	\$ 1.61	\$ 2.02	\$ 2.18
Average		\$ 1.61	\$ 1.63	\$ 1.75	\$ 1.75	\$ 1.68	\$ 1.66	\$ 1.56	\$ 1.61	\$ 2.12	\$ 2.27	\$ 1.76
Median		\$ 1.45	\$ 1.50	\$ 1.63	\$ 1.89	\$ 1.81	\$ 1.78	\$ 1.53	\$ 1.72	\$ 2.12	\$ 2.33	\$ 1.78
Minimum		\$ 0.55	\$ 0.45	\$ 0.56	\$ 0.73	\$ 0.65	\$ 0.63	\$ 0.62	\$ 0.45	\$ 0.80	\$ 1.17	\$ 0.66
Maximum		\$ 3.01	\$ 2.63	\$ 3.06	\$ 2.67	\$ 2.59	\$ 2.56	\$ 2.31	\$ 2.50	\$ 3.10	\$ 3.25	\$ 2.77

Southeastern Model

Model for determining what Class I differential should be in Miami

----- Potential Supply Areas -----

	Hopkins County <u>Texas</u>	Jasper County <u>Indiana</u>	Wayne County <u>Ohio</u>	Franklin County <u>Pennsylvania</u>	Lancaster County <u>Pennsylvania</u>
Miles to Miami	1,263	1,275	1,176	1,128	1,164
MA Mileage Rate (\$ / cwt / mile)	<u>\$0.0044</u>	<u>\$0.0044</u>	<u>\$0.0044</u>	<u>\$0.0044</u>	<u>\$0.0044</u>
Gross haul cost	\$5.557	\$5.610	\$5.174	\$4.963	\$5.122
Reduction factor	<u>80.00%</u>	<u>80.00%</u>	<u>80.00%</u>	<u>80.00%</u>	<u>80.00%</u>
Adjusted haul cost	\$4.446	\$4.488	\$4.140	\$3.971	\$4.097
Class I Differential	<u>\$3.000</u>	<u>\$1.800</u>	<u>\$2.000</u>	<u>\$2.800</u>	<u>\$2.900</u>
ACQUISITION COST	\$ 7.45	\$ 6.29	\$ 6.14	\$ 6.77	\$ 7.00

Calculation of the 2008 Mideast Order Cost Per Hundredweight per Mile

Diesel price per gallon average	\$	4.052	1/
Base fuel per gallon	\$	1.413	2/
	\$	2.639	
Divide by MPG		6.0	3/
Fuel Adjustor	\$	0.440	
Base Rate	\$	2.200	4/
Fuel Adjusted Rate	\$	2.640	
Divide by Load Size Per CWT		480	5/
Rate Per Cwt - Per Mile	\$	0.00550	6/

1/ 2008 Year to Date EIA Average

2/ May 5 - July 28, 2003 period

3/ Mideast Milk Marketing Agency Standard

4/ Mideast Milk Marketing Rate for the Base Period

5/ Mideast Milk Marketing Agency Standard

6/ For Reference the most recent Federal Order 5
and Order 7 calculation for the month of August
is \$0.00521

Southeastern Model

Class I Differential Calculation based on Milk Procurement Cost Model: Calculation of Value at Charleston WV

	----- Potential Supply Areas -----					
	Huron County <u>Michigan</u>	Elkhart County <u>Indiana</u>	Lenawee County <u>Michigan</u>	Wayne County <u>Ohio</u>	Mercer County <u>OH</u>	Crawford County <u>PA</u>
Miles to Charleston, WV	483.2	374.0	327.1	203.1	265.5	314.2
MA Mileage Rate (\$ / cwt / mile)	<u>\$0.00550</u>	<u>\$0.00550</u>	<u>\$0.00550</u>	<u>\$0.00550</u>	<u>0.00550</u>	<u>\$0.00550</u>
Gross haul cost	\$2.658	\$2.057	\$1.799	\$1.117	\$1.460	\$1.728
Reduction factor	<u>80.00%</u>	<u>80.00%</u>	<u>80.00%</u>	<u>80.00%</u>	<u>80.00%</u>	<u>80.00%</u>
Adjusted haul cost	\$2.126	\$1.646	\$1.439	\$0.894	\$1.168	\$1.382
Class I Differential	<u>\$1.800</u>	<u>\$1.800</u>	<u>\$1.800</u>	<u>\$2.000</u>	<u>\$2.000</u>	<u>\$2.100</u>
ACQUISITION COST	\$ 3.93	\$ 3.45	\$ 3.24	\$ 2.89	\$ 3.17	\$ 3.48
Current Class I Differential @ Charleston, WV	<u>\$2.20</u>	<u>\$2.20</u>	<u>\$2.20</u>	<u>\$2.20</u>	<u>\$2.20</u>	<u>\$2.20</u>
Difference	\$ 1.73	\$1.25	\$1.04	\$0.69	\$0.97	\$1.28

Southeastern Model

Class I Differential Calculation based on Milk Procurement Cost Model: Calculation of Value at Cincinnati, Ohio

	Potential Supply Areas					
	Huron County <u>Michigan</u>	Elkhart County <u>Indiana</u>	Lenawee County <u>Michigan</u>	Wayne County <u>Ohio</u>	Mercer County <u>OH</u>	Crawford County <u>PA</u>
Miles to Cincinnati, Ohio	381.0	235.3	224.9	202.0	122.6	340.5
MA Mileage Rate (\$ / cwt / mile)	<u>\$0.00550</u>	<u>\$0.00550</u>	<u>\$0.00550</u>	<u>\$0.00550</u>	<u>0.00550</u>	<u>\$0.00550</u>
Gross haul cost	\$2.096	\$1.294	\$1.237	\$1.111	\$0.674	\$1.873
Reduction factor	<u>80.00%</u>	<u>80.00%</u>	<u>80.00%</u>	<u>80.00%</u>	<u>80.00%</u>	<u>80.00%</u>
Adjusted haul cost	\$1.676	\$1.035	\$0.990	\$0.889	\$0.539	\$1.498
Class I Differential	<u>\$1.800</u>	<u>\$1.800</u>	<u>\$1.800</u>	<u>\$2.000</u>	<u>\$2.000</u>	<u>\$2.100</u>
 ACQUISITION COST	 \$ 3.48	 \$ 2.84	 \$ 2.79	 \$ 2.89	 \$ 2.54	 \$ 3.60
Current Class I Differential @ Cincinnati, OH	<u>\$2.20</u>	<u>\$2.20</u>	<u>\$2.20</u>	<u>\$2.20</u>	<u>\$2.20</u>	<u>\$2.30</u>
Difference	\$1.28	\$0.64	\$0.59	\$0.69	\$0.34	\$1.30

Southeastern Model

Class I Differential Calculation based on Milk Procurement Cost Model: Calculation of Value at Indianapolis IN

	Potential Supply Areas					
	Huron County Michigan	Elkhart County Indiana	Lenawee County Michigan	Wayne County Ohio	Mercer County OH	Crawford County PA
Miles to Indianapolis, IN	395.2	171.5	220.2	262.9	130.2	400.6
MA Mileage Rate (\$ / cwt / mile)	<u>\$0.00550</u>	<u>\$0.00550</u>	<u>\$0.00550</u>	<u>\$0.00550</u>	<u>0.00550</u>	<u>\$0.00550</u>
Gross haul cost	\$2.174	\$0.943	\$1.211	\$1.446	\$0.716	\$2.203
Reduction factor	<u>80.00%</u>	<u>80.00%</u>	<u>80.00%</u>	<u>80.00%</u>	<u>80.00%</u>	<u>80.00%</u>
Adjusted haul cost	\$1.739	\$0.755	\$0.969	\$1.157	\$0.573	\$1.763
Class I Differential	<u>\$1.800</u>	<u>\$1.800</u>	<u>\$1.800</u>	<u>\$2.000</u>	<u>\$2.000</u>	<u>\$2.100</u>
ACQUISITION COST	\$ 3.54	\$ 2.55	\$ 2.77	\$ 3.16	\$ 2.57	\$ 3.86
Current Class I Differential @ Indianapolis, IN	<u>\$2.00</u>	<u>\$2.00</u>	<u>\$2.00</u>	<u>\$2.00</u>	<u>\$2.00</u>	<u>\$2.00</u>
Difference	\$ 1.54	\$0.55	\$0.77	\$1.16	\$0.57	\$1.86

Southeastern Model

Class I Differential Calculation based on Milk Procurement Cost Model: Calculation of Value at Marietta, OH

	Potential Supply Areas					
	Huron County <u>Michigan</u>	Elkhart County <u>Indiana</u>	Lenawee County <u>Michigan</u>	Wayne County <u>Ohio</u>	Mercer County <u>OH</u>	Crawford County <u>PA</u>
Miles to Marietta, OH	431.8	344.2	275.8	118.0	235.5	224.5
MA Mileage Rate (\$ / cwt / mile)	<u>\$0.00550</u>	<u>\$0.00550</u>	<u>\$0.00550</u>	<u>\$0.00550</u>	<u>0.00550</u>	<u>\$0.00550</u>
Gross haul cost	\$2.375	\$1.893	\$1.517	\$0.649	\$1.295	\$1.235
Reduction factor	<u>80.00%</u>	<u>80.00%</u>	<u>80.00%</u>	<u>80.00%</u>	<u>80.00%</u>	<u>80.00%</u>
Adjusted haul cost	\$1.900	\$1.514	\$1.214	\$0.519	\$1.036	\$0.988
Class I Differential	<u>\$1.800</u>	<u>\$1.800</u>	<u>\$1.800</u>	<u>\$2.000</u>	<u>\$2.000</u>	<u>\$2.100</u>
ACQUISITION COST	\$ 3.70	\$ 3.31	\$ 3.01	\$ 2.52	\$ 3.04	\$ 3.09
Current Class I Differential @ Marietta, OH	<u>\$2.00</u>	<u>\$2.00</u>	<u>\$2.00</u>	<u>\$2.00</u>	<u>\$2.00</u>	<u>\$2.00</u>
Difference	\$ 1.70	\$1.31	\$1.01	\$0.52	\$1.04	\$1.09

Southeastern Model

Class I Differential Calculation based on Milk Procurement Cost Model: Calculation of Value at Newark, OH

	Potential Supply Areas					
	Huron County <u>Michigan</u>	Elkhart County <u>Indiana</u>	Lenawee County <u>Michigan</u>	Wayne County <u>Ohio</u>	Mercer County <u>OH</u>	Crawford County <u>PA</u>
Miles to Newark, OH	343.0	239.0	187.0	67.0	130.0	222.0
MA Mileage Rate (\$ / cwt / mile)	<u>\$0.00550</u>	<u>\$0.00550</u>	<u>\$0.00550</u>	<u>\$0.00550</u>	<u>0.00550</u>	<u>\$0.00550</u>
Gross haul cost	\$1.887	\$1.315	\$1.029	\$0.369	\$0.715	\$1.221
Reduction factor	<u>80.00%</u>	<u>80.00%</u>	<u>80.00%</u>	<u>80.00%</u>	<u>80.00%</u>	<u>80.00%</u>
Adjusted haul cost	\$1.509	\$1.052	\$0.823	\$0.295	\$0.572	\$0.977
Class I Differential	<u>\$1.800</u>	<u>\$1.800</u>	<u>\$1.800</u>	<u>\$2.000</u>	<u>\$2.000</u>	<u>\$2.100</u>
ACQUISITION COST	\$ 3.31	\$ 2.85	\$ 2.62	\$ 2.29	\$ 2.57	\$ 3.08
Current Class I Differential @ Newark, OH	<u>\$2.00</u>	<u>\$2.00</u>	<u>\$2.00</u>	<u>\$2.00</u>	<u>\$2.00</u>	<u>\$2.00</u>
Difference	\$ 1.31	\$ 0.85	\$0.62	\$0.29	\$0.57	\$1.08

Southeastern Model

Class I Differential Calculation based on Milk Procurement Cost Model: Calculation of Value at Springfield, OH

	Potential Supply Areas					
	Huron County <u>Michigan</u>	Elkhart County <u>Indiana</u>	Lenawee County <u>Michigan</u>	Wayne County <u>Ohio</u>	Mercer County <u>OH</u>	Crawford County <u>PA</u>
Miles to Springfield, OH	314.0	205.0	158.0	144.0	92.0	281.0
MA Mileage Rate (\$ / cwt / mile)	<u>\$0.00550</u>	<u>\$0.00550</u>	<u>\$0.00550</u>	<u>\$0.00550</u>	<u>0.00550</u>	<u>\$0.00550</u>
Gross haul cost	\$1.727	\$1.128	\$0.869	\$0.792	\$0.506	\$1.546
Reduction factor	<u>80.00%</u>	<u>80.00%</u>	<u>80.00%</u>	<u>80.00%</u>	<u>80.00%</u>	<u>80.00%</u>
Adjusted haul cost	\$1.382	\$0.902	\$0.695	\$0.634	\$0.405	\$1.236
Class I Differential	<u>\$1.800</u>	<u>\$1.800</u>	<u>\$1.800</u>	<u>\$2.000</u>	<u>\$2.000</u>	<u>\$2.100</u>
ACQUISITION COST	\$ 3.18	\$ 2.70	\$ 2.50	\$ 2.63	\$ 2.40	\$ 3.34
Current Class I Differential @ Springfield, OH	<u>\$2.00</u>	<u>\$2.00</u>	<u>\$2.00</u>	<u>\$2.00</u>	<u>\$2.00</u>	<u>\$2.00</u>
Difference	\$ 1.18	\$ 0.70	\$0.50	\$0.63	\$0.40	\$1.34

Comparison of Current, Alternative and Proposed Differentials

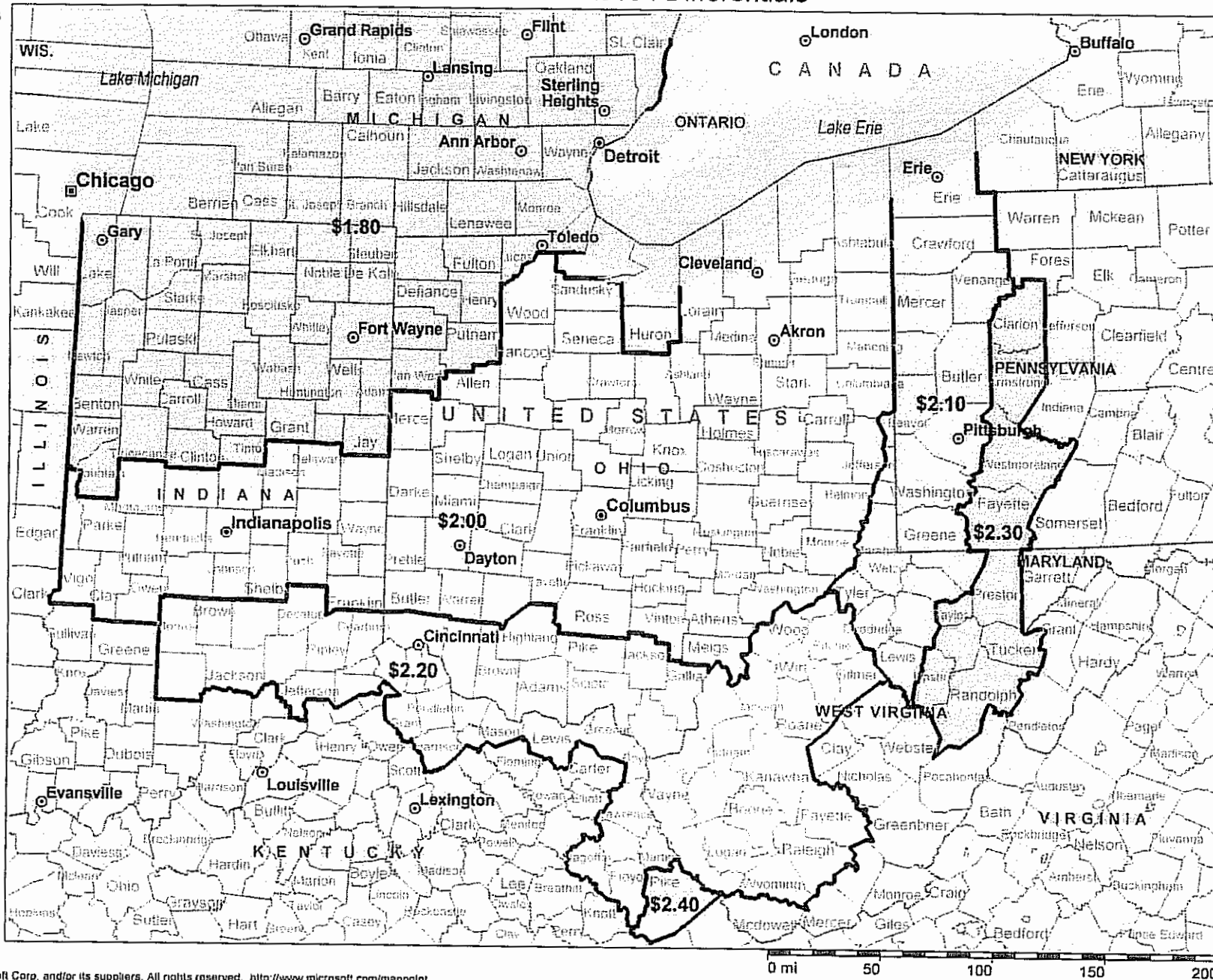
Federal Order 33		Current	MEMMA Matrix	Change	Southeastern Model	Change	Proposed	Change
Cincinnati	OH	\$ 2.20	\$ 2.83	\$ 0.63	\$ 2.54	\$ 0.34	\$ 2.40	\$ 0.20
Charleston	WV	\$ 2.20	\$ 3.37	\$ 1.17	\$ 2.89	\$ 0.69	\$ 2.60	\$ 0.40
Indianapolis	IN	\$ 2.00	\$ 2.56	\$ 0.56	\$ 2.55	\$ 0.55	\$ 2.15	\$ 0.15
Marietta	OH	\$ 2.00	\$ 2.80	\$ 0.80	\$ 2.52	\$ 0.52	\$ 2.15	\$ 0.15
Newark	OH	\$ 2.00	\$ 2.45	\$ 0.45	\$ 2.29	\$ 0.29	\$ 2.15	\$ 0.15
Springfield	OH	\$ 2.00	\$ 2.62	\$ 0.62	\$ 2.40	\$ 0.40	\$ 2.15	\$ 0.15

Federal Order 5		Current Differential	TCBF Assessment	Effective Differential
Louisville	KY	\$ 2.30	\$ 0.15	\$ 2.45
Holland	IN	\$ 2.30	\$ 0.15	\$ 2.45
Winchester	KY	\$ 2.60	\$ 0.15	\$ 2.75
Madisonville	KY	\$ 2.60	\$ 0.15	\$ 2.75
London	KY	\$ 2.90	\$ 0.15	\$ 3.05
Somerset	KY	\$ 2.90	\$ 0.15	\$ 3.05

Current Federal Order 33 Class I Differentials

Custom Territories

- \$1.80
- \$2.00
- \$2.10
- \$2.20
- \$2.30
- \$2.40



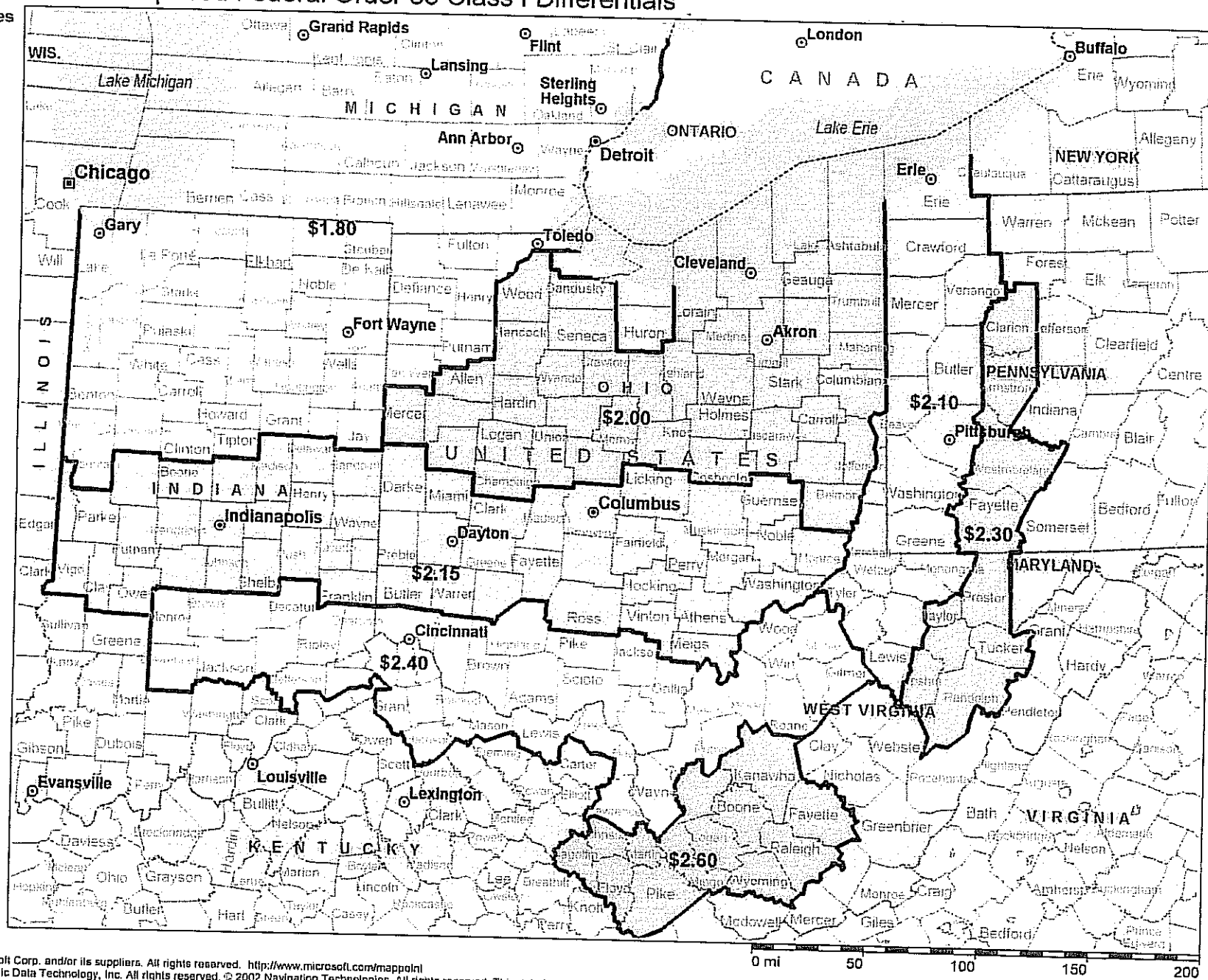
Attachment 6

Copyright © 1988-2003 Microsoft Corp. and/or its suppliers. All rights reserved. <http://www.microsoft.com/mappoint>
 © Copyright 2002 by Geographic Data Technology, Inc. All rights reserved. © 2002 Navigation Technologies. All rights reserved. This data includes information taken with permission from Canadian authorities © 1991-2002 Government of Canada (Statistics Canada and/or Geomatics Canada), all rights reserved.

Proposed Federal Order 33 Class I Differentials

Custom Territories

- \$1.80
- \$2.00
- \$2.10
- \$2.15
- \$2.30
- \$2.40
- \$2.60

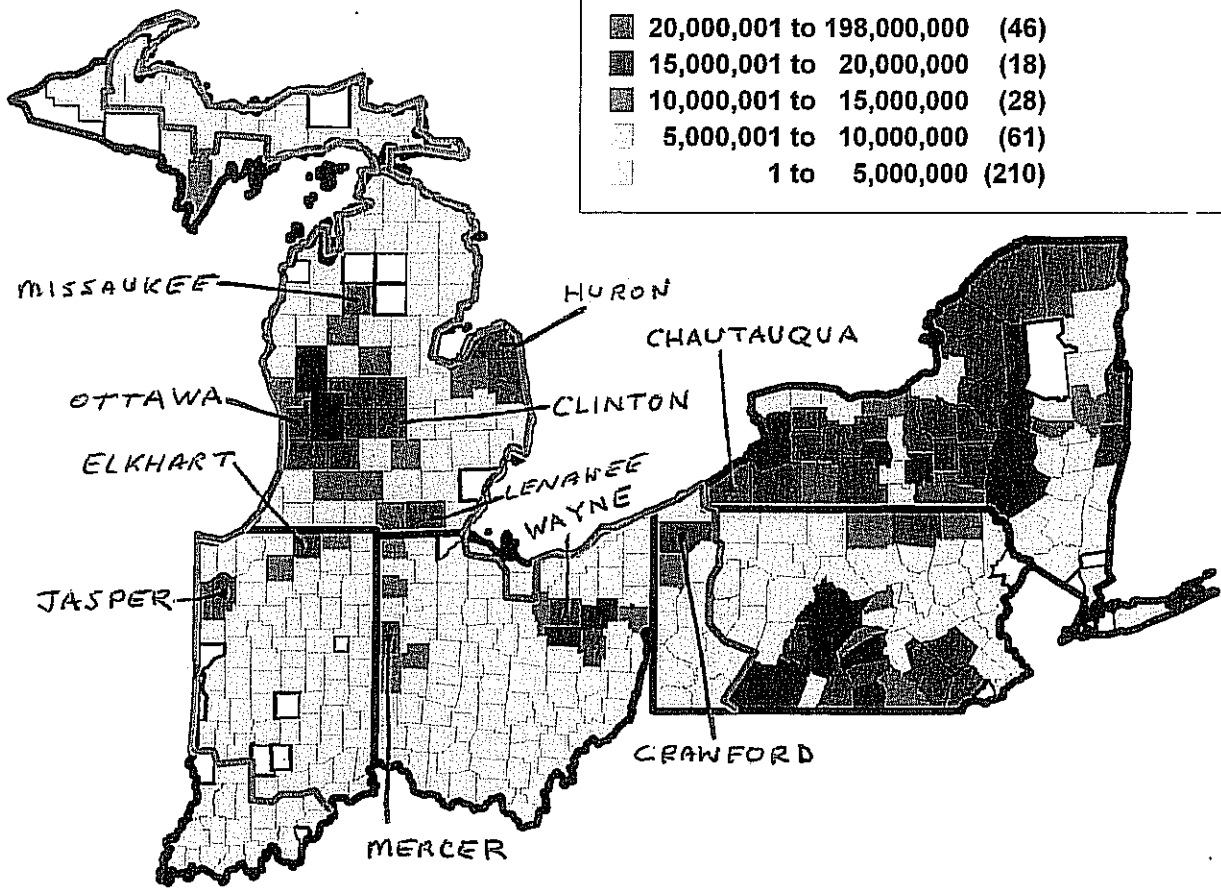


Copyright © 1988-2003 Microsoft Corp. and/or its suppliers. All rights reserved. <http://www.microsoft.com/mappoint>

© Copyright 2002 by Geographic Data Technology, Inc. All rights reserved. © 2002 Navigation Technologies. All rights reserved. This data includes information taken with permission from Canadian authorities © 1991-2002 Government of Canada

All Milk Marketings By Selected States May 2007
(Pounds of Milk)

20,000,001 to 198,000,000	(46)
15,000,001 to 20,000,000	(18)
10,000,001 to 15,000,000	(28)
5,000,001 to 10,000,000	(61)
1 to 5,000,000	(210)



Federal Order 33 Milk Marketings Only May 2007
(Pounds of Milk)

20,000,001 to 53,800,000	(15)
15,000,001 to 20,000,000	(7)
10,000,001 to 15,000,000	(17)
5,000,001 to 10,000,000	(39)
1 to 5,000,000	(194)

