

UNITED STATES DEPARTMENT OF AGRICULTURE

1930 – 220TH STREET SE, SUITE 102
BOTHELL, WA 98021-8471
PHONE: (425) 487-6009
FAX: (425) 487-2775
E-Mail: fmaseattle@fmaseattle.com

**AGRICULTURAL MARKETING SERVICE
DAIRY PROGRAMS**

FEDERAL MILK ORDERS 124, 131 & 135

11225 N 28TH DRIVE, STE D-120
PHOENIX, AZ 85029-5630
PHONE: (602) 547-2909
FAX: (602) 547-2906
E-Mail: ma@fmma.net

Statistical Material Prepared at the Request of:

Elvin Hollon
Director Fluid Marketing / Economic Analysis
Dairy Farmers of America, Inc.

April 2002

Table of Contents

Table 1: Alphabetical List of Selected Types of Handlers by Month and Type, Western Order (FO 135): 2000-2001

Map 1: Producer Milk Pooled on the Western Order (FO 135): September 2001

Map 2: Population Based on 2000 Census Bureau Data, Western Order (FO 135) Marketing Area

Table 2: Population Based on 2000 Census Bureau Data, Western Order (FO 135) Marketing Area

Map 3: Major Cities and Nonpool Manufacturing Plants Associated with the Western Order: December 2001

Table 1

**Alphabetical List of Selected Types of Handlers by Month and Type *
Western Order (FO 135): 2000-2001**

Handler	2000											
	Jan	Feb	Mar	Apr	May	Jun	Jul	Aug	Sep	Oct	Nov	Dec
Alta Dena Certified Dairy, City of Industry, CA												
Brown Dairy, Inc., Coalville, UT	P	P	P	P	P	P	P	P	P	P	P	P
Cacique Company, City of Industry, CA										N	N	N
Country Boy Dairy, North Ogden, UT	P	P	P	P	P	P	P	P	P	P	P	P
Cream O' Weber, Inc., Salt Lake City, UT	D	D	D	D	D	D	D	D	D	D	D	D
Dairy Farmers of America, Inc.	C	C	C	C	C	C	C	C	C	C	C	C
DFA Beaver, Utah	M	M	M	M	M	M	M	M				
DFA Smithfield, Utah	M	M	M	M	M	M	M	M				
The Dannon Co., Fort Worth, TX					N	N	N	N	N	N	N	N
The Dannon Co., Salt Lake, UT							N			O	O	O
Falconhurst Dairy, Inc., Buhl, ID	D	D	D	D	D	D	D	D	D	D	D	D
Glanbia Foods, Inc., Twin Falls, ID	B	B	B	B	B	B	B	B	B	B	B	B
Gossner Foods, Inc., Logan, UT	D	D	D	D	D	D	D	D	D	D	D	D
Ideal Dairy, Inc., Richfield, UT	P	P	P	P	P	P	P	P	P	P	P	P
Jerome Cheese Co., Jerome, ID	B	B	B	B	B	B	B	B	B	B	B	B
KDK, Inc., Draper, UT	D	D	D	D	D	D	D	D	D	D	D	D
Kohler Mix Specialties, Inc., White Bear Lake, MN												
Kohler Mix Specialties, Inc., Sulfur Springs, TX												
Magic Valley Quality Milk Producers, Inc.	C	C	C	C	C	C	C	C	C	C	C	C
Meadow Gold Dairies, Inc., Boise, ID	D	D	D	D	D	D	D	D	D	D	D	D
Meadow Gold Dairies, Inc., Pocatello, ID	D	D	D	D	D	D	D	D	D	D	D	D
Meadow Gold Dairies, Inc., Salt Lake City, UT	D	D	D	D	D	D	D	D	D	D	D	D
Meadow Gold Dairies, Inc., Delta, CO	O	O	O	O	O	O	O	O	O	O	O	O
Model Dairy, Inc., Reno, NV	N	N	N	N	N	N	N	N	N	N	N	N
Morningstar Foods, Gustine, CA	N	N	N	N	N	N	N	N	N	N	N	N
Morningstar Foods, Sulfur Springs, TX											O	
Northwest Dairy Association	C	C	C	C	C	C	C	C	C	C	C	C
Parmalat White Knight Corp., Wyoming, MI						O	O		O		O	
Reeds Dairy, Inc., Idaho Falls, ID	P	P	P	P	P	P	P	P	P	P	P	P
Ropies Dairy, Inc., Riverdale, UT 1/	P	P	P	P	P	P	P	P	P	P	P	P
Rosehill Dairy, Morgan, UT	P	P	P	P	P	P	P	P	P	P	P	P
Ryan Food Co., Murray, KY												
Safeway Stores, Inc., Clackamas, OR	O	O	O	O	O	O	O	O	O	O	O	O
Slades Dairy, Mt. Pleasant, UT	P	P	P	P	P	P	P	P	P	P	P	P
Smiths Dairy, Buhl, ID	E	E	E	E	E	E	E	E	E	E	E	E
Sorrento Lactalis, Nampa, ID												
Stoker Wholesale, Inc., Burley, ID	D	D	D	D	D	D	D	D	D	D	D	D
The Kroger Co., Layton Dairy, Layton, UT 1/	D	D	D	D	D	D	D	D	D	D	D	D
The Kroger Co., Swan Island Dairy, Portland, OR 2/	O	O	O	O	O	O	O	O	O	O	O	O
Vitamilk Dairy, Inc., Seattle, WA	O	O	O	O	O	O	O	O	O	O	O	O
Western Quality Food Products, LLC, Cedar City, UT	D	D	D	D	D	D	D	D	D	D	D	D
WestFarm Foods, Boise, ID	D	D	D	D	D	D	D	D	D	D	D	D
Wilcox Dairy Farms, Cheney, WA												
Winder Dairy, Inc., Salt Lake City, UT	D	D	D	D	D	D	D	D	D	D	D	D

* If for a given month a handler is not represented, no letter designation is made (blank).

D - pool distributing plant

1/ Formerly known as Johnny's Dairy.

B - proprietary bulk tank handler

2/ Formerly known as Smiths Food and Drug Centers, Inc.

C - cooperative

3/ Formerly known as Fred Meyer, Inc.

M - cooperative pool manufacturing plant

P - producer-handler

N - partially regulated distributing plant

O - other order plant

E - exempt

Information in this table was not prepared in support of or in opposition to any proposal

Table 1 (continued)

Alphabetical List of Selected Types of Handlers by Month and Type *

Western Order (FO 135): 2000-2001

Handler	2001											
	Jan	Feb	Mar	Apr	May	Jun	Jul	Aug	Sep	Oct	Nov	Dec
Alta Dena Certified Dairy, City of Industry, CA								N	N	N	N	N
Brown Dairy, Inc., Coalville, UT	P	P	P	P	P	P	P	P	P	P	P	P
Cacique Company, City of Industry, CA	N	N		N	N	N	N	N	N	N	N	N
Country Boy Dairy, North Ogden, UT	P	P	P	P	P	P	P	P	P	P	P	P
Cream O' Weber, Inc., Salt Lake City, UT	D	D	D	D	D	D	D	D	D	D	D	D
Dairy Farmers of America, Inc.	C	C	C	C	C	C	C	C	C	C	C	C
DFA Beaver, Utah												
DFA Smithfield, Utah												
The Dannon Co., Fort Worth, TX	N	N	N	N	N	N	N		N	N	N	N
The Dannon Co., Salt Lake, UT	O	O	O	O	O				O			
Falconhurst Dairy, Inc., Buhl, ID	D	D	N	D	D	D	D	D	D	D	D	D
Glanbia Foods, Inc., Twin Falls, ID	B	B		B	B	B	B	B	B	B	B	B
Gossner Foods, Inc., Logan, UT	D	D	D	D	D	D	D	D	D	D	D	D
Ideal Dairy, Inc., Richfield, UT	P	P	P	P	P	P	P	P	P	P	P	P
Jerome Cheese Co., Jerome, ID	B	B	B	B	B	B	B	B	B	B	B	B
KDK, Inc., Draper, UT	D	D	D	D	D	D	D	D	D	D	D	D
Kohler Mix Specialties, Inc., White Bear Lake, MN		O	O	O	O	O	O	O				O
Kohler Mix Specialties, Inc., Sulfur Springs, TX						N	N	N	N	O		
Magic Valley Quality Milk Producers, Inc.	C	C	C	C	C	C	C	C	C	C	C	C
Meadow Gold Dairies, Inc., Boise, ID	D	D	D	D	D	D	D	D	D	D	D	D
Meadow Gold Dairies, Inc., Pocatello, ID	D	D	D	D	D	D	D	D	D	D	D	D
Meadow Gold Dairies, Inc., Salt Lake City, UT	D	D	D	D	D	D	D	D	D	D	D	D
Meadow Gold Dairies, Inc., Delta, CO	O	O	O	O	O	O	O	O	O	O	O	O
Model Dairy, Inc., Reno, NV	N	N	N	N	N	N	N	N	N	N	N	N
Morningstar Foods, Gustine, CA	N	N	N	N	N	N	N	N	N	N	N	N
Morningstar Foods, Sulfur Springs, TX			O	O							O	O
Northwest Dairy Association	C	C	C	C	C	C	C	C	C	C	C	C
Parmalat White Knight Corp., Wyoming, MI	O	O		O		O		O	O	O	O	O
Reeds Dairy, Inc., Idaho Falls, ID	P	P	P	P	P	P	P	P	P	P	P	P
Ropies Dairy, Inc., Riverdale, UT 1/	P	P	P	P	P	P	P	P	P	P	P	P
Rosehill Dairy, Morgan, UT	P	P	P	P	P	P	P	P	P	P	P	P
Ryan Food Co., Murray, KY					O			O	O	O	O	O
Safeway Stores, Inc., Clackamas, OR	O	O	O	O	O	O	O	O	O	O	O	O
Slades Dairy, Mt. Pleasant, UT	P	P	P									
Smiths Dairy, Buhl, ID	E	E	E	E	E	E	E	E	E	E	E	E
Sorrento Lactalis, Nampa, ID				B	B	B						
Stoker Wholesale, Inc., Burley, ID	D	D	D	D	D	D	D	D	D	D	D	D
The Kroger Co., Layton Dairy, Layton, UT 1/	D	D	D	D	D	D	D	D	D	D	D	D
The Kroger Co., Swan Island Dairy, Portland, OR 2/	O	O	O	O	O	O	O	O	O	O	O	O
Vitamilk Dairy, Inc., Seattle, WA	O	O	O	O	O	O	O	O	O	O	O	O
Western Quality Food Products, LLC, Cedar City, UT	D	D	D	D	D	D	D	D	D	D	D	D
WestFarm Foods, Boise, ID	D	D	D	D	D	D	D	D	D	D	D	D
Wilcox Dairy Farms, Cheney, WA								O	O	O	O	O
Winder Dairy, Inc., Salt Lake City, UT	D	D	D	D	D	D	D	D	D	D	D	D

* If for a given month a handler is not represented, no letter designation is made (blank).

D - pool distributing plant

1/ Formerly known as Johnny's Dairy.

B - proprietary bulk tank handler

2/ Formerly known as Smiths Food and Drug Centers, Inc.

C - cooperative

3/ Formerly known as Fred Meyer, Inc.

M - cooperative pool manufacturing plant

P - producer-handler

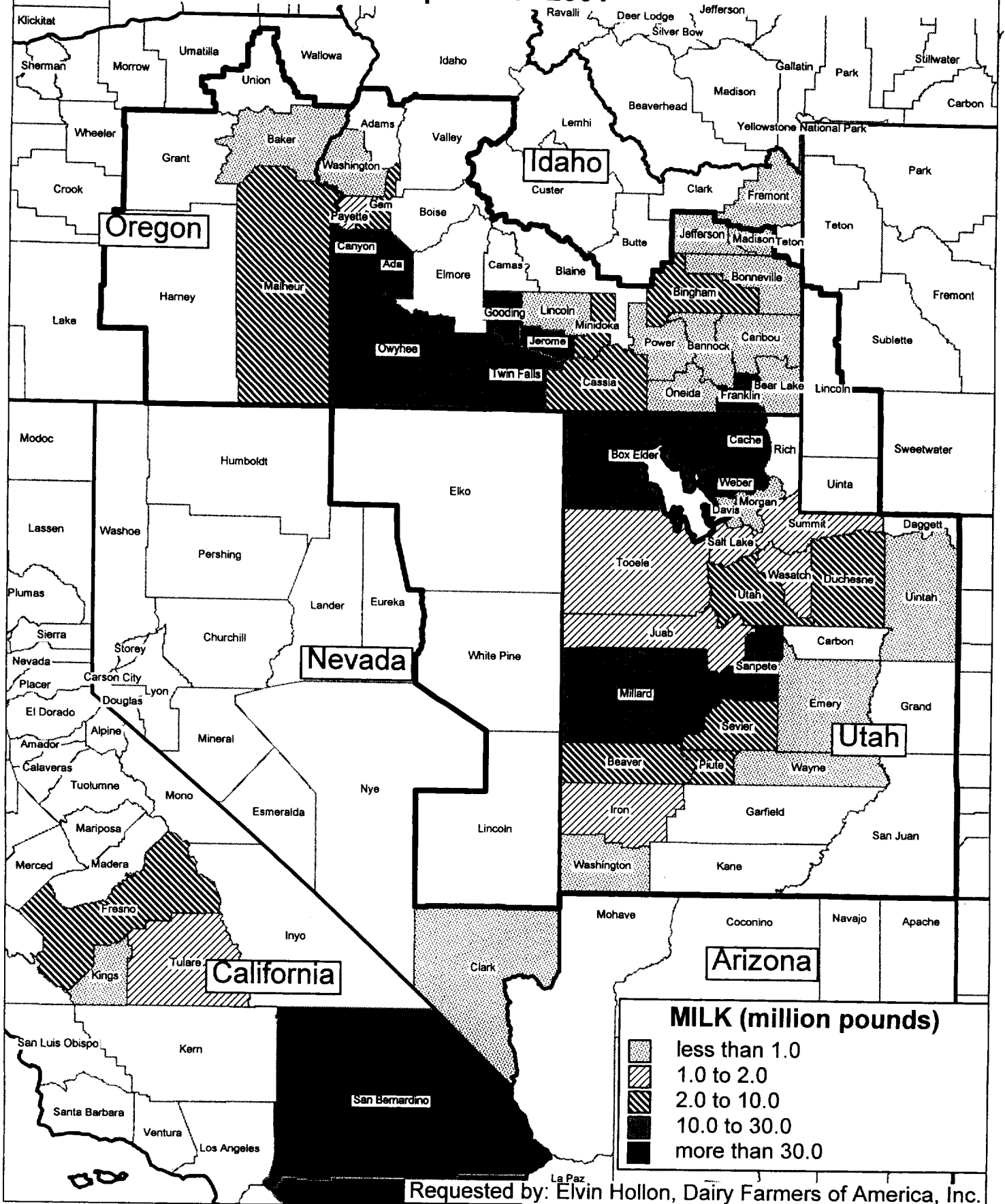
N - partially regulated distributing plant

O - other order plant

E - exempt

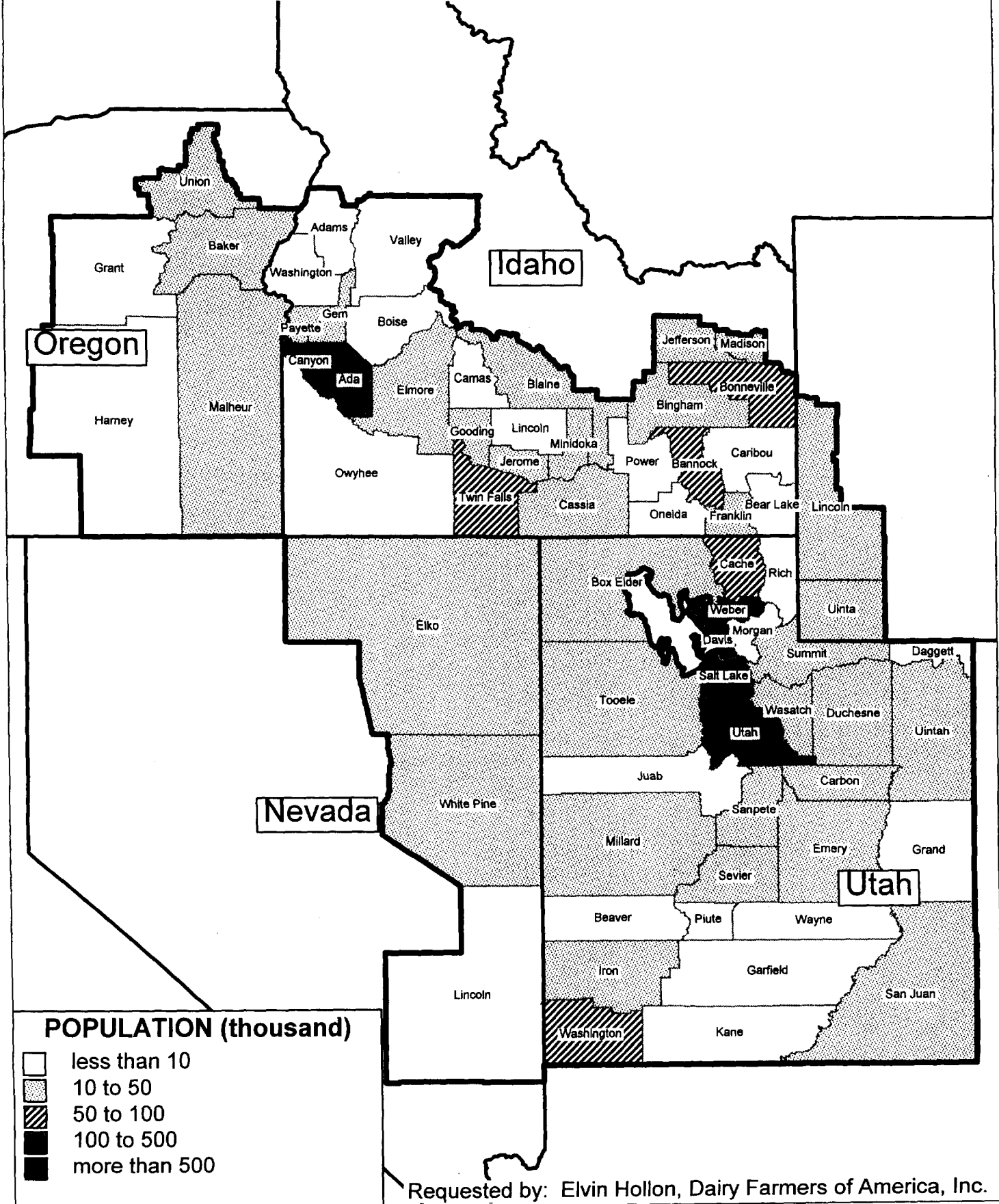
Note: Information in this map was not prepared in support of or in opposition to any proposal

Map 1 Producer Milk Pooled on the Western Order September 2001



Note: Information in this map was not prepared in support of or in opposition to any proposal

Map 2 Population Based on 2000 Census Bureau Data Western Order (FO 135) Marketing Area



Note: Information in this table was not prepared in support of or in opposition to any proposal

**Table 2: Population Based on 2000 Census Bureau Data
Western Order (FO 135) Marketing Area**

State	County	FIPS Code	Location Adjustment	Population
Idaho	Ada	16001	\$1.60	260,147
	Adams	16003	\$1.60	3,893
	Bannock	16005	\$1.60	73,431
	Bear Lake	16007	\$1.60	6,503
	Bingham	16011	\$1.60	41,185
	Blaine	16013	\$1.60	16,938
	Boise	16015	\$1.60	4,900
	Bonneville	16019	\$1.60	79,362
	Camas	16025	\$1.60	874
	Canyon	16027	\$1.60	112,449
	Caribou	16029	\$1.60	7,371
	Cassia	16031	\$1.60	21,322
	Elmore	16039	\$1.60	23,612
	Franklin	16041	\$1.60	10,528
	Gem	16045	\$1.60	14,081
	Gooding	16047	\$1.60	13,253
	Jefferson	16051	\$1.60	18,964
	Jerome	16053	\$1.60	17,329
	Lincoln	16063	\$1.60	3,757
	Madison	16065	\$1.60	24,547
	Minidoka	16067	\$1.60	20,565
	Oneida	16071	\$1.60	3,878
	Owyhee	16073	\$1.60	9,834
	Payette	16075	\$1.60	19,858
	Power	16077	\$1.60	8,162
	Twin Falls	16083	\$1.60	60,402
Valley	16085	\$1.60	7,957	
Washington	16087	\$1.60	9,788	
Total				894,890
Nevada	Elko	32007	\$1.90	43,485
	Lincoln	32017	\$1.60	4,059
	White Pine	32033	\$1.90	10,265
Total				57,809
Oregon	Baker	41001	\$1.60	16,330
	Grant	41023	\$1.60	7,980
	Harney	41025	\$1.60	7,039
	Malheur	41045	\$1.60	28,200
	Union	41061	\$1.60	25,013
Total				84,562

Requested by:
Elvin Hollon
Dairy Farmers of America, Inc.

Note: Information in this table was not prepared in support of or in opposition to any proposal

**Table 2: Population Based on 2000 Census Bureau Data
Western Order (FO 135) Marketing Area**

State	County	FIPS Code	Location Adjustment	Population
Utah	Beaver	49001	\$1.60	5,696
	Box Elder	49003	\$1.90	40,078
	Cache	49005	\$1.90	84,454
	Carbon	49007	\$1.90	20,715
	Daggett	49009	\$1.90	764
	Davis	49011	\$1.90	221,535
	Duchesne	49013	\$1.90	14,005
	Emery	49015	\$1.90	10,652
	Garfield	49017	\$1.60	4,150
	Grand	49019	\$1.90	8,037
	Iron	49021	\$1.60	26,985
	Juab	49023	\$1.90	7,044
	Kane	49025	\$1.60	6,012
	Millard	49027	\$1.90	12,175
	Morgan	49029	\$1.90	6,799
	Piute	49031	\$1.60	1,430
	Rich	49033	\$1.90	1,852
	Salt Lake	49035	\$1.90	827,868
	San Juan	49037	\$1.60	13,512
	Sanpete	49039	\$1.90	20,160
	Sevier	49041	\$1.90	17,584
	Summit	49043	\$1.90	24,494
	Tooele	49045	\$1.90	30,105
	Uintah	49047	\$1.90	24,924
	Utah	49049	\$1.90	321,171
	Wasatch	49051	\$1.90	12,283
Washington	49053	\$1.60	75,931	
Wayne	49055	\$1.60	2,378	
Weber	49057	\$1.90	179,460	
Total				2,022,253
Wyoming	Lincoln	56023	\$1.60	13,967
	Uinta	56041	\$1.90	20,221
Total				34,188
Grand Total				3,093,702

Source: U.S. Census Bureau, Census 2000 Redistricting Data (P.L. 94-171) Summary File and 1990 Census.
Internet Release date: April 2, 2001, (www.census.gov/population/www/cen2000/phc-t4.html).

Requested by:
Elvin Hollon
Dairy Farmers of America, Inc.

Note: Information in this map was not prepared in support of or in opposition to any proposal.

Map 3: Major Cities and Nonpool Manufacturing Plants Associated with the Western Order December 2001

