

**THE VISUAL AIDS ON THE FOLLOWING
PAGES ARE FOR REFERENCE ONLY AND
NOT INTENDED FOR OFFICIAL USE.**

**TO PURCHASE OFFICIAL VISUAL AIDS PLEASE CONTACT
THE SPECIALTY CROPS INSPECTION DIVISION'S
EQUIPMENT AND FORMS DEPOT**

**USDA, AMS, FVP, SCI
831 MITTEN ROAD, ROOM 200
BURLINGAME, CA 94010
PHONE: 650-552-9073
FAX: 650-552-9147**

[EQUIPMENT CATALOG](#)

MUSHROOMS FOR PROCESSING



U.S. No. 2 – Disease Spots



U.S. No. 2 -- Feathering



Cull – Disease Spots



Cull – Discolored Stem

**MSH-CP-1
February 1991
(Previously folder of defects, 1964)**

MUSHROOMS FOR PROCESSING



U.S. No. 1 – Feathering



U.S. No. 2 – Disease Spots



U.S. No. 1 – Slight Discoloration



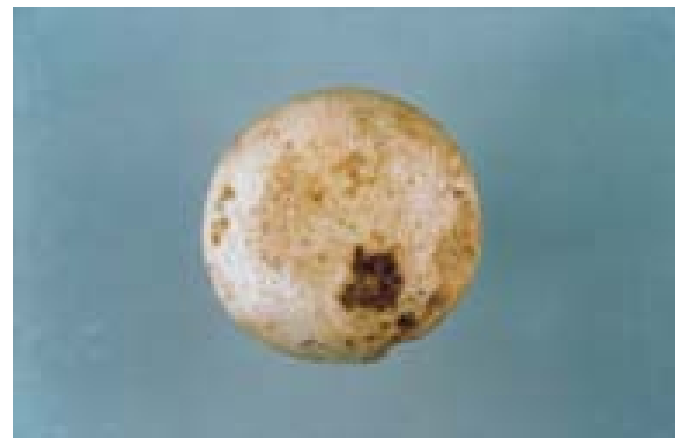
U.S. No. 2 – Disease Spots

**MSH-CP-2
February 1991
(Previously folder of defects, 1964)**

MUSHROOMS FOR PROCESSING



Cull – Disease Spots



U.S. No. 2 – Disease Spots



U.S. No. 1 – Mechanical Injury



U.S. No. 2 – Mechanical Damage

**MSH-CP-3
February 1991
(Previously folder of defects, 1964)**

MUSHROOMS FOR PROCESSING



Cull – Disease Stem



**U.S. No. 2 (cap) Provided disease not in base of cap
Cull (stem) disease**



**U.S. No. 1 (cap) Provided disease not in base of cap
Cull (stem) disease**



U.S. No. 1 (cap) – Cull (stem)

MUSHROOMS FOR PROCESSING



U.S. No. 2 – Mechanical Damage



Cull – Diseased Stem – Over mature cap

**MSH-CP-5
February 1991
(Previously folder of defects, 1964)**