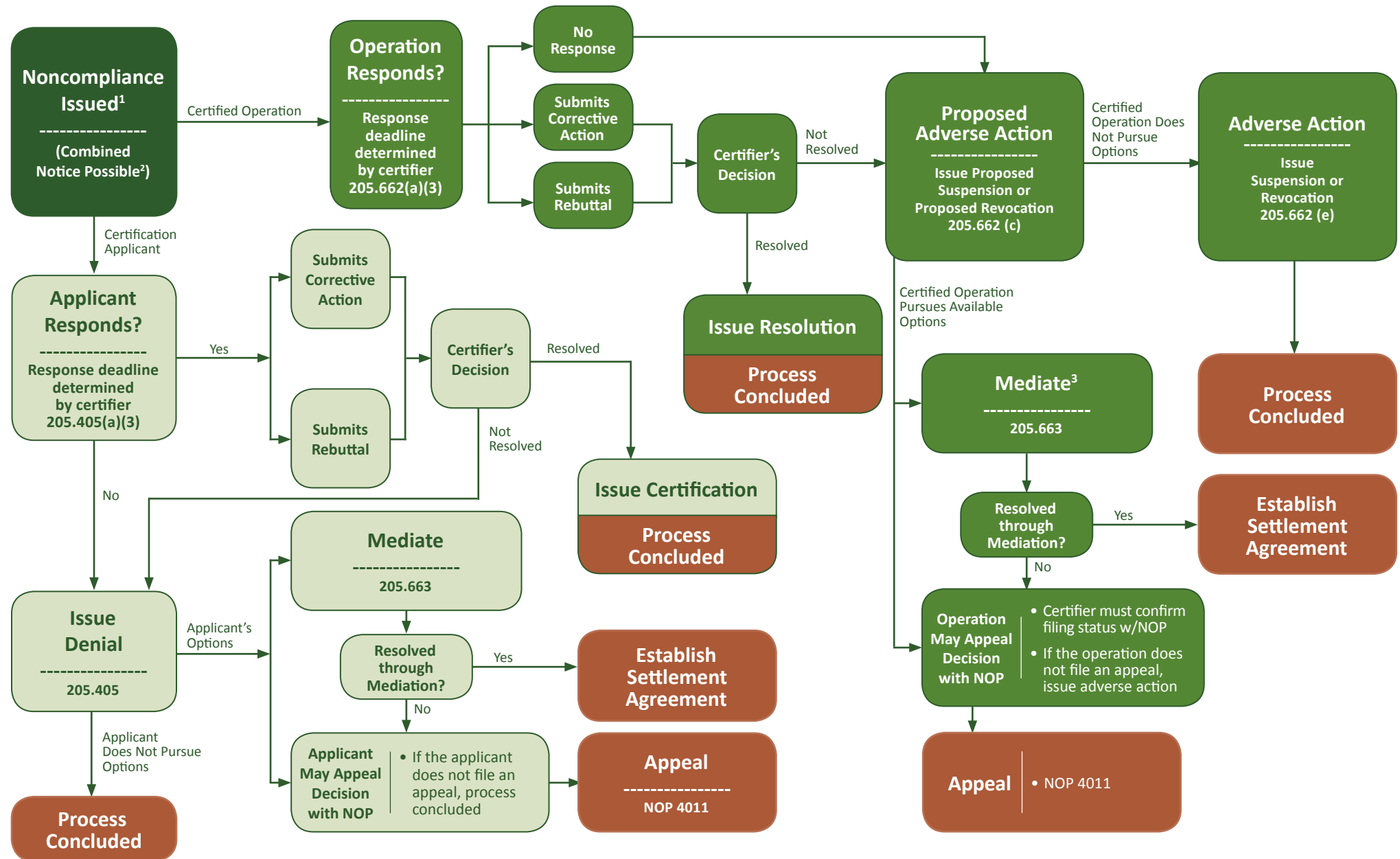




NONCOMPLIANCE AND ADVERSE ACTIONS FLOW CHART



Note 1. A certified operation may surrender its certification at any time. When certification is surrendered prior to a certifier issuing a proposed adverse action, the certifier accepts the surrender and the process is closed. If an operation surrenders its certification after the certifier issues a proposed adverse action, the certifier accepts the surrender and continues the process for adverse action.

Note 2. For information on combined notices, see §205.662(c) and §205.405(g).

Note 3. Certifiers are required to continue providing certification services during the mediation and appeal processes.