

**THE VISUAL AIDS ON THE FOLLOWING  
PAGES ARE FOR REFERENCE ONLY AND  
NOT INTENDED FOR OFFICIAL USE.**

**TO PURCHASE OFFICIAL VISUAL AIDS PLEASE CONTACT  
THE SPECIALTY CROPS INSPECTION DIVISION'S  
EQUIPMENT AND FORMS DEPOT**

**USDA, AMS, FVP, SCI  
831 MITTEN ROAD, ROOM 200  
BURLINGAME, CA 94010  
PHONE: 650-552-9073  
FAX: 650-552-9147**

**[EQUIPMENT CATALOG](#)**

# NECTARINE



**Shape: lower limit “well formed” which is required in U.S. Fancy, U.S. Extra No. 1, and U.S. No. 1.**

**NECTARINES, C-1  
SHAPE  
MAY 1990 (Previously C-1, no date)**

# NECTARINES



2 Nectarines – D and E; 2 views of each.  
Both Lower Limit Misshapen (But Not Badly Misshapen)

NECTARINES, C-2  
SHAPE  
MAY 1990 (Previously no date)



## NECTARINE DEFECTS



1. Split pit – Injury. Healed crack is more than 1/4" but less than 3/8" long. Score against U.S. No. 1. Not borderline.

2. Split Pit – Serious Damage. Healed crack is more than 3/8" long. Not a limit.

3. Not Well Formed. Score as damage against the U.S. No. 1 Grade. Not borderline.

# NECTARINES

SLIDE 191 -- RUSSETING



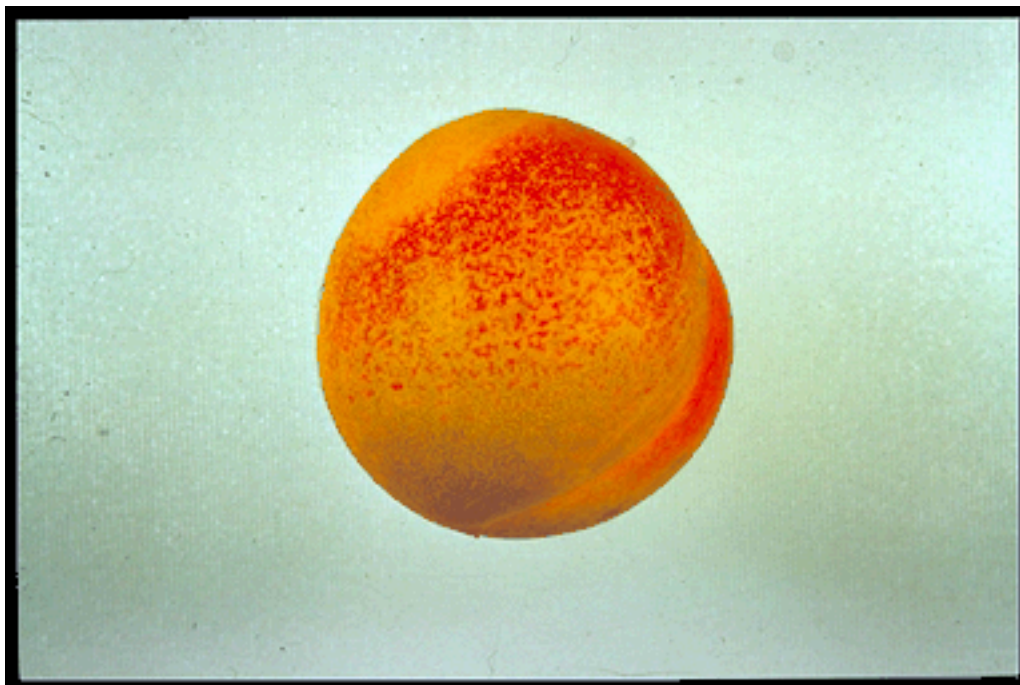
# NECTARINES

SLIDE 193 -- RUSSETING



# NECTARINES

SLIDE 194 – RUSSETING AND SPECKLING





# NECTARINES

SLIDE 195 – RUSSETING AND GROWTH CRACK





# NECTARINES

SLIDE 196 – STAINING AND RUSSETING



# NECTARINES

SLIDE 197 – STAINING



# NECTARINES

SLIDE 198 – SPECKLING



# NECTARINES

SLIDE 199 -- STAINING

