

**THE VISUAL AIDS ON THE FOLLOWING
PAGES ARE FOR REFERENCE ONLY AND
NOT INTENDED FOR OFFICIAL USE.**

**TO PURCHASE OFFICIAL VISUAL AIDS PLEASE CONTACT
THE SPECIALTY CROPS INSPECTION DIVISION'S
EQUIPMENT AND FORMS DEPOT**

**USDA, AMS, SCP, SCI
SCSupplyDepot@usda.gov
PHONE: 650-552-9073
FAX: 650-552-9147**

[EQUIPMENT CATALOG](#)

SWEETPOTATOES



FAIRLY WELL SHAPED. U.S. EXTRA NO. 1 AND U.S. NO. 1

**Sweetpotatoes, Photo No. 5
December 1990
(Previously No. 5, no date)**

SWEETPOTATOES



FAIRLY WELL SHAPED. U.S. EXTRA NO. 1 AND U.S. NO. 1

Sweetpotatoes, Photo No. 6
December 1990
(Previously No. 6, no date)

SWEETPOTATOES



FAIRLY WELL SHAPED. U.S. EXTRA NO. 1 AND U.S. NO. 1

Sweetpotatoes, Photo No. 7
December 1990
(Previously No. 7, no date)

SWEETPOTATOES



NOT FAIRLY WELL SHAPED – U.S. NO. 2

**Sweetpotatoes, Photo No. 8
December 1990
(Previously No. 8, no date)**

SWEETPOTATOES



NOT FAIRLY WELL SHAPED – U.S. NO. 2

**Sweetpotatoes, Photo No. 9
December 1990
(Previously No. 9, no date)**

SWEETPOTATOES



NOT FAIRLY WELL SHAPED – U.S. NO. 2

**Sweetpotatoes, Photo No. 10
December 1990
(Previously No. 10, no date)**

SWEETPOTATOES



NOT FAIRLY WELL SHAPED – U.S. NO. 2

**Sweetpotatoes, Photo No. 11
December 1990
(Previously No. 11, no date)**

SWEETPOTATOES



NOT FAIRLY WELL SHAPED – U.S. NO. 2

**Sweetpotatoes, Photo No. 12
December 1990
(Previously No. 12, no date)**

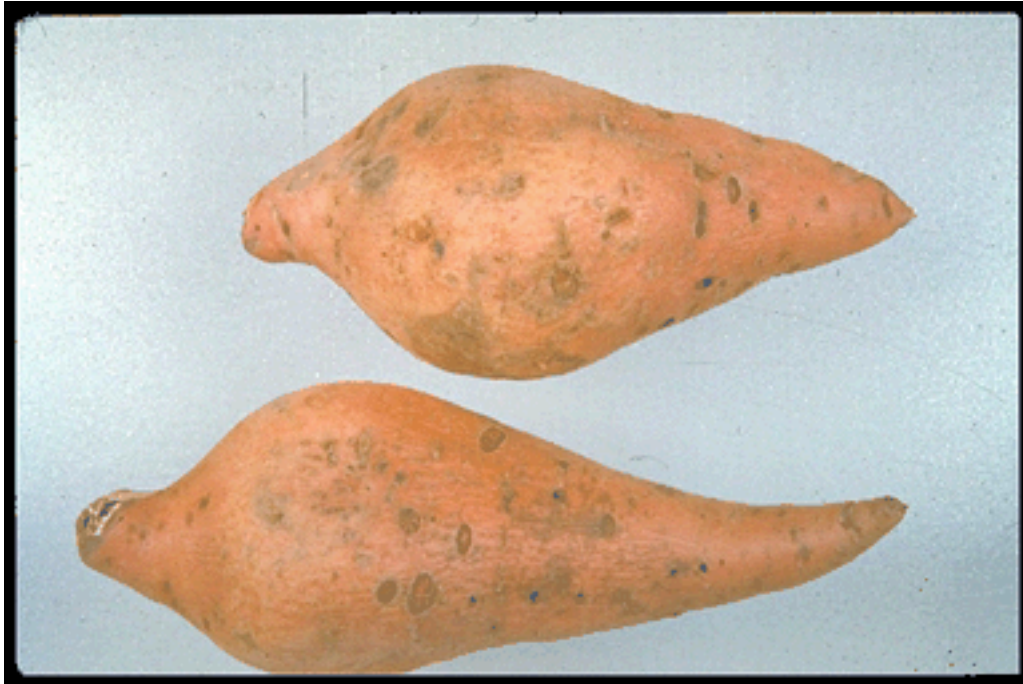
SWEETPOTATOES

SLIDE NUMBER 228 – CUCUMBER BEETLE INJURY



SWEETPOTATOES

SLIDE NUMBER 229 – CUCUMBER BEETLE INJURY



Internal Breakdown (Pithiness) (C) in Sweetpotatoes

Tend to be lighter weight, with interior flesh being pithy, spongy, cottony, and/or showing cavities.

The spongy cottony flesh may also show white to yellow streaking.

Score any amount as serious damage.



Secondary Rootlets (Q) on Sweetpotatoes

Score as damage when materially affecting appearance.

The sweetpotatoes below are examples of the minimum amount of secondary rootlets needed to materially affect the appearance.

