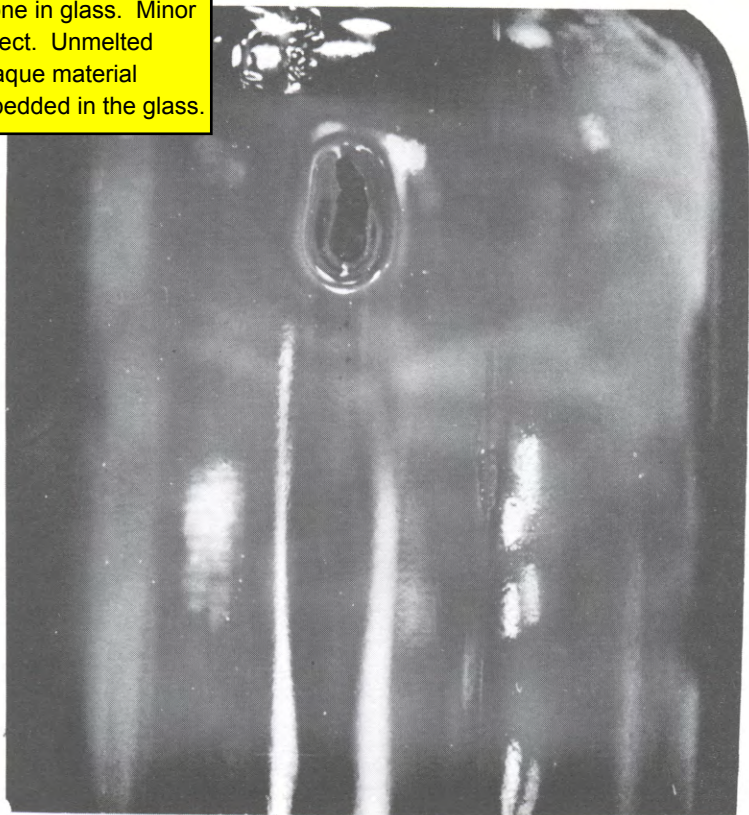


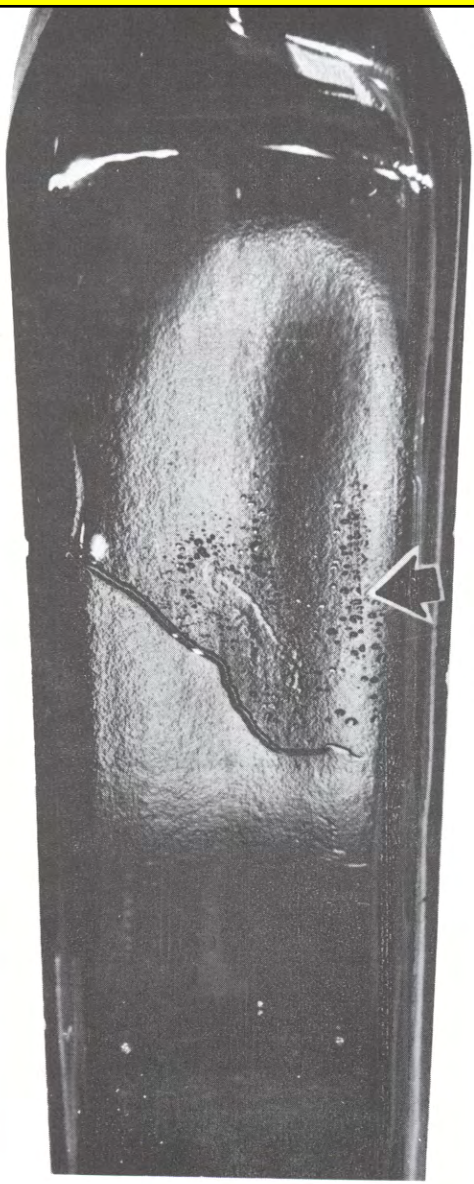
Defect No. 202. Chip in Glass. Minor defect. An area where glass has been broken off, but does not materially weaken the bottom of the body wall.



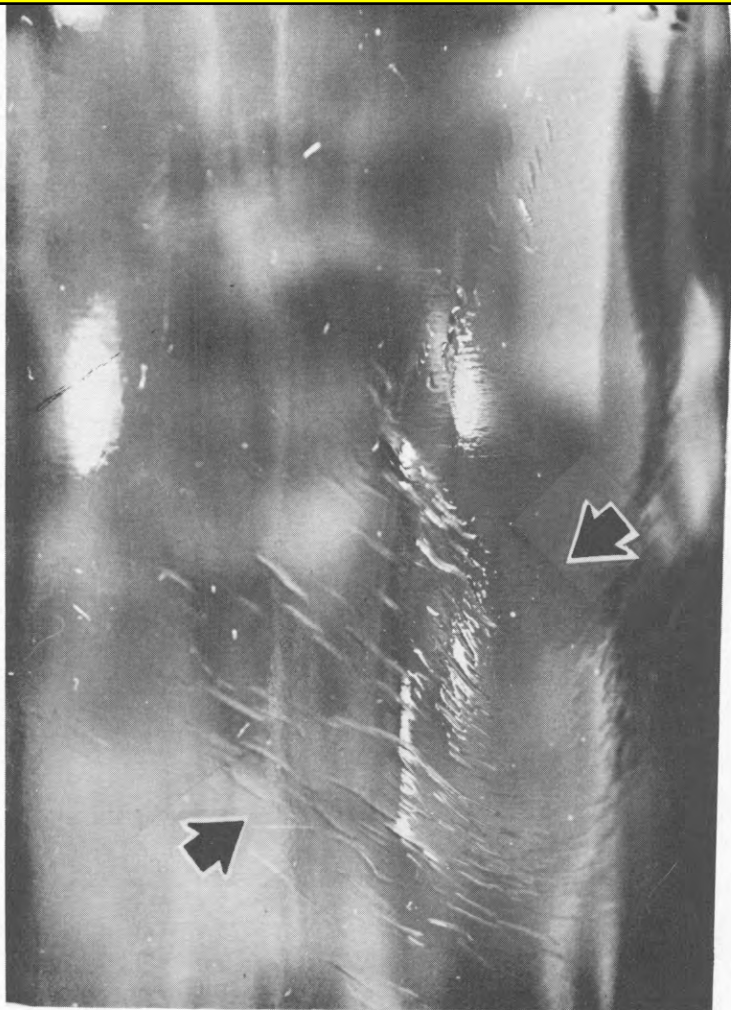
Defect No. 203.
Stone in glass. Minor
defect. Unmelted
opaque material
imbedded in the glass.



Defect No. 204. Pits in Surface of Glass. Minor defect. Pitted area affecting the appearance but not the usability of the container.



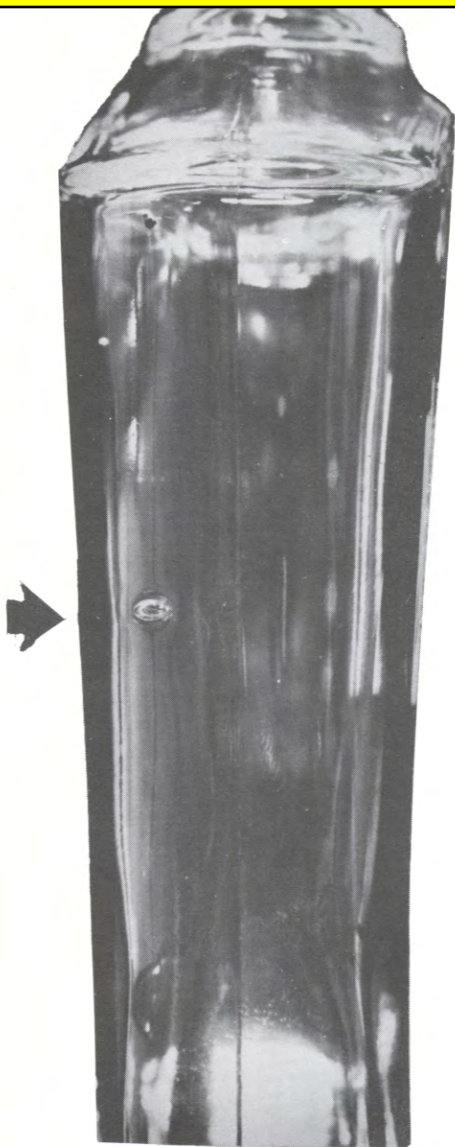
Defect No. 205. Sagging surface. Minor defect. A wavelike distortion on the surface of the body wall.



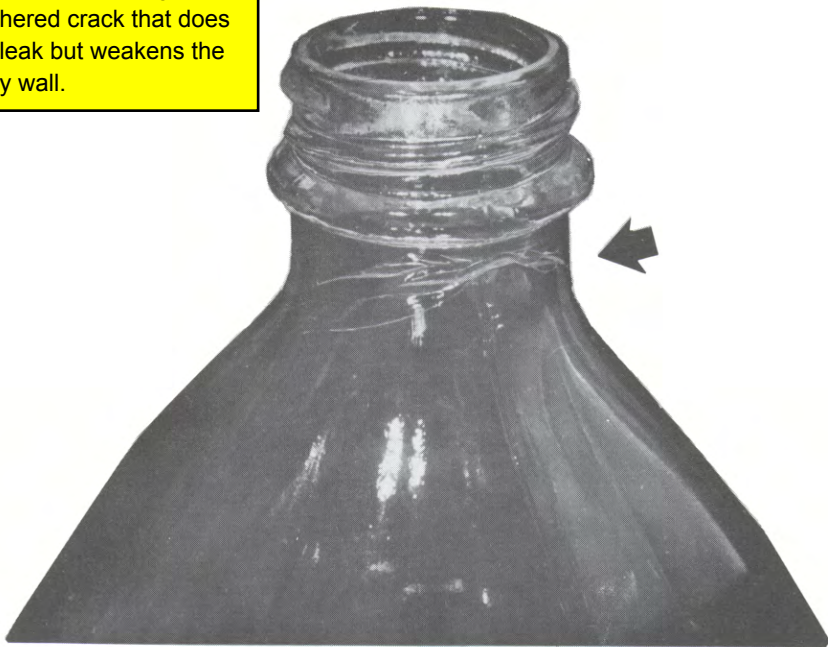
Defect No. 104. Thin Spot in Glass. Minor defect. A small area where the body wall is undecidably thinner and weaker.



Defect No. 102. Bead. Major Defect. A bubble in the body wall exceeding 1/8 inch in diameter that weakens the body wall.



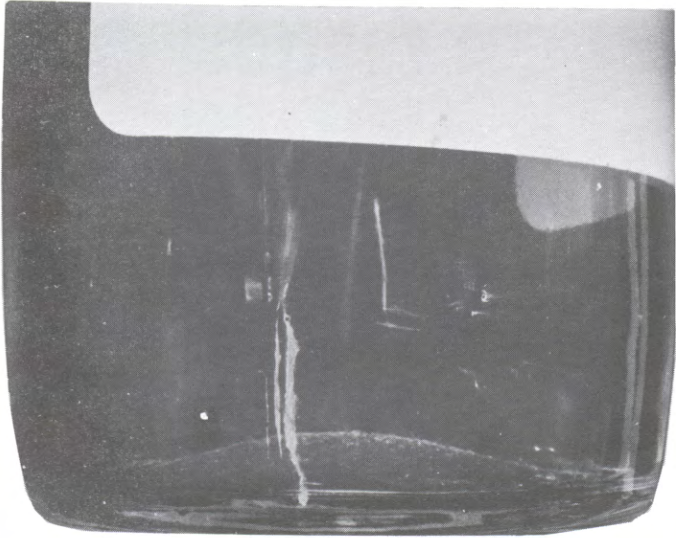
Defect No. 103. Checked.
Major defect. A slight
feathered crack that does
not leak but weakens the
body wall.



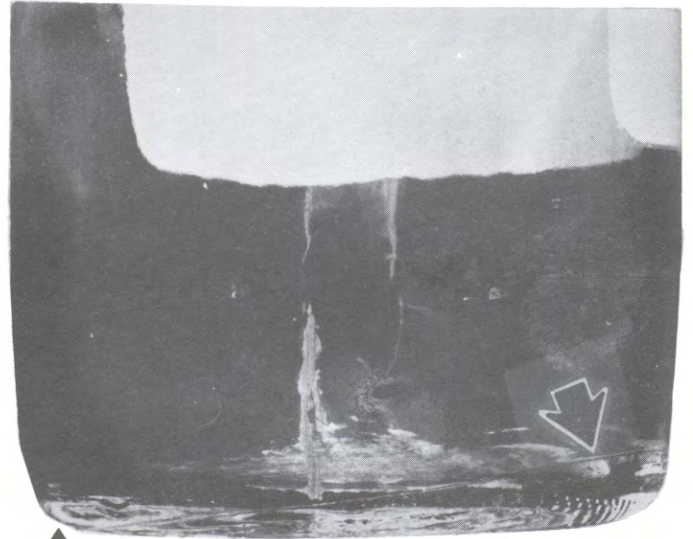
Defect No. 103. Checked. Major Defect. A slight hairline crack that does not leak but weakens the body wall.



Evenly Formed



Unevenly Formed



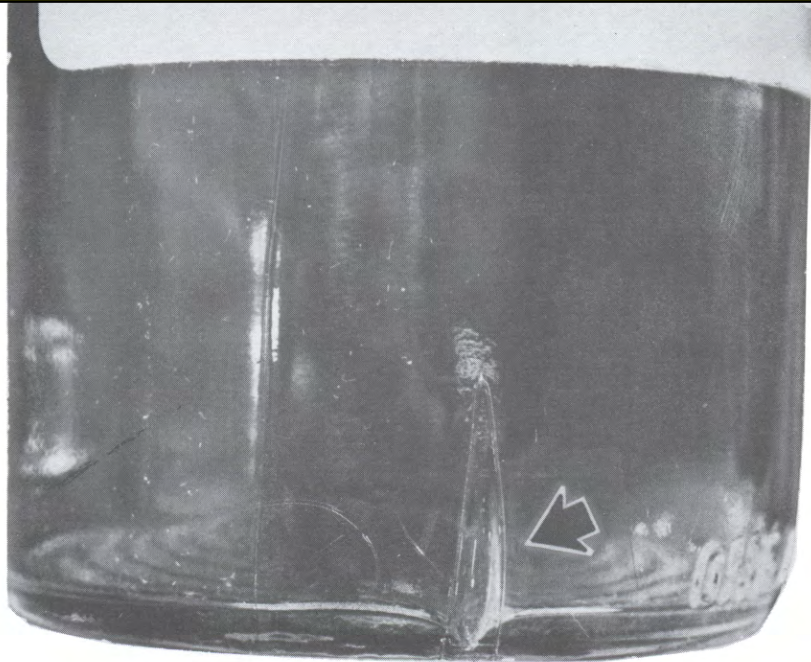
Defect No. 104. Thin Spot in Glass Evenly Formed. Thin Spot in Glass Unevenly Formed. Major Defect. Left side of unevenly formed bottom (right picture) decidedly thinner and weaker.



THINNER SIDE
(Thin Spot)

THICKER SIDE

Defect No. 105. Blister. Major defect. An elongated bubble that weakens the body wall.



Defect No. 1. Bird Swing. Critical defect. A threadlike glass appendage inside container as viewed through the open neck of the bottle. Difficult to observe in filled container but could result in glass contamination of product.



Defect No. 1. Bird Swing. Critical defect. A cordlike glass appendage inside container as viewed through the open neck of the bottle. Difficult to observe in filled container but could result in glass contamination of product.

