

**THE VISUAL AIDS ON THE FOLLOWING  
PAGES ARE FOR REFERENCE ONLY AND  
NOT INTENDED FOR OFFICIAL USE.**

**TO PURCHASE OFFICIAL VISUAL AIDS PLEASE CONTACT  
THE SPECIALTY CROPS INSPECTION DIVISION'S  
EQUIPMENT AND FORMS DEPOT**

**USDA, AMS, SCP, SCI  
831 MITTEN ROAD, ROOM 200  
BURLINGAME, CA 94010  
PHONE: 650-552-9073  
FAX: 650-552-9147**

**[EQUIPMENT CATALOG](#)**

# WATERMELONS



**Damage by Rind Worm Scarring**

**Watermelons  
Rind Worm Scarring C-1  
March 1990 (Previously 1963)**

# WATERMELONS

SLIDE 40 – MIXED VARIETIES



# WATERMELONS

SLIDE 41 -- SHAPE



# WATERMELONS

SLIDE 42 -- SHAPE



# WATERMELONS

SLIDE 44 -- HAIL





# WATERMELONS

SLIDE 45 – SCARRING HAIL



# WATERMELONS

SLIDE 46 – RIND WORM





# WATERMELONS

SLIDE 47 – WHITE HEART RIDGING



# WATERMELONS

SLIDE 48 – WHITE HEART RIDGING



# WATERMELONS

SLIDE 49 – WHITE HEART RIDGING



# WATERMELONS

SLIDE 50 – WHITE HEART RIDGING



# WATERMELONS

## SLIDE 51 – WHITE HEART RIDGING





# WATERMELONS

SLIDE 52 – IMMATURE EXTERNAL



# WATERMELONS

SLIDE 54 – IMMATURE EXTERNAL



# WATERMELONS

SLIDE 56 – HOLLOW HEART EXTERNAL



# WATERMELONS

SLIDE 57 – HOLLOW HEART CULL





# WATERMELONS

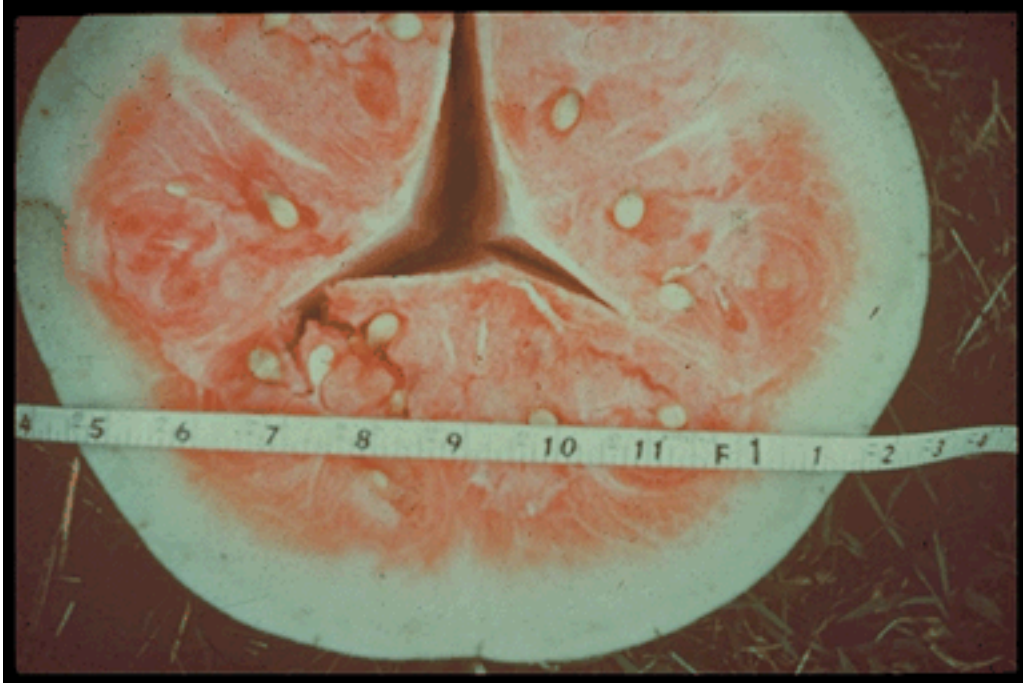
SLIDE 58 – HOLLOW HEART EXTERNAL





# WATERMELONS

SLIDE 59 – HOLLOW HEART CULL



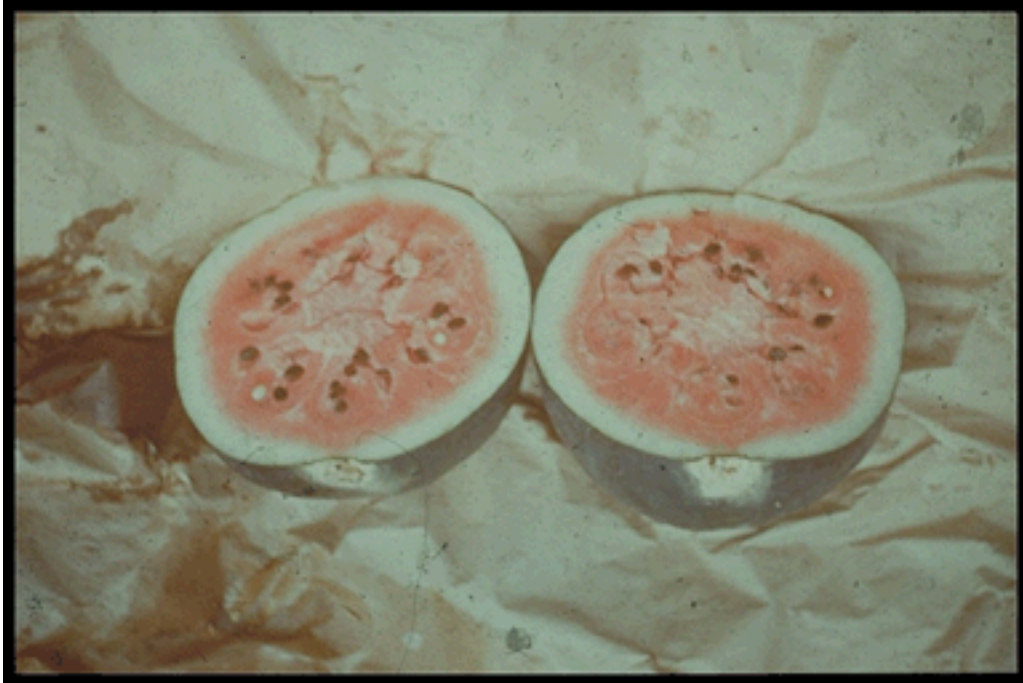
# WATERMELONS

SLIDE 60 -- SUNBURN



# WATERMELONS

SLIDE 61 -- SUNSCALD



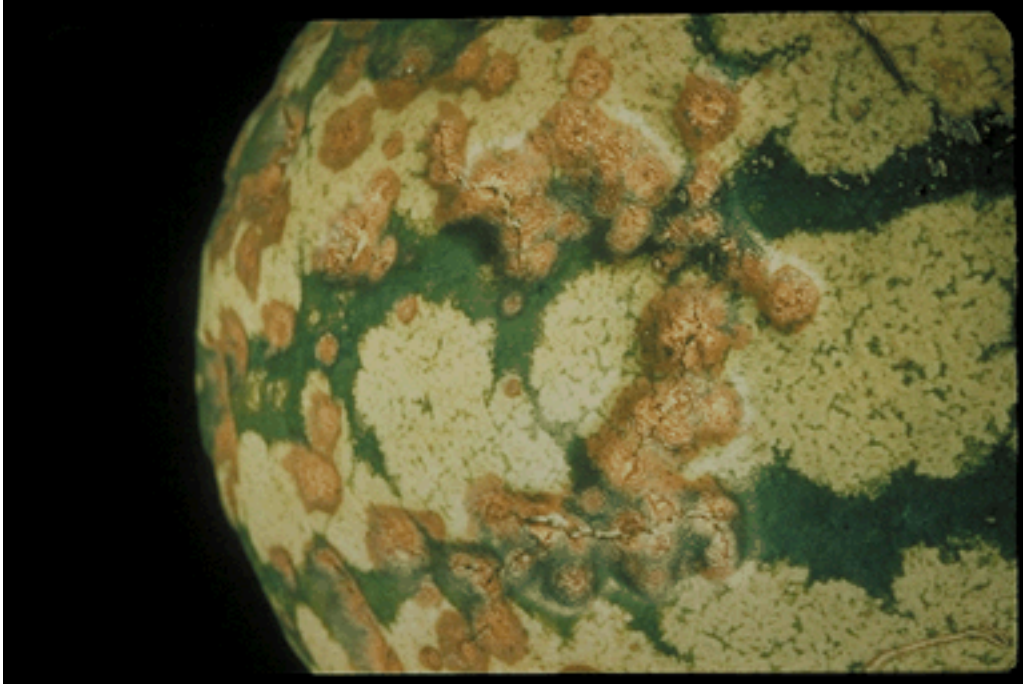
# WATERMELONS

SLIDE 62 -- DECAY



# WATERMELONS

SLIDE 63 -- ANTHRACNOSE





# WATERMELONS

SLIDE 64 – NOT ANTHRACNOSE



# WATERMELONS

SLIDE 65 -- SHAPE



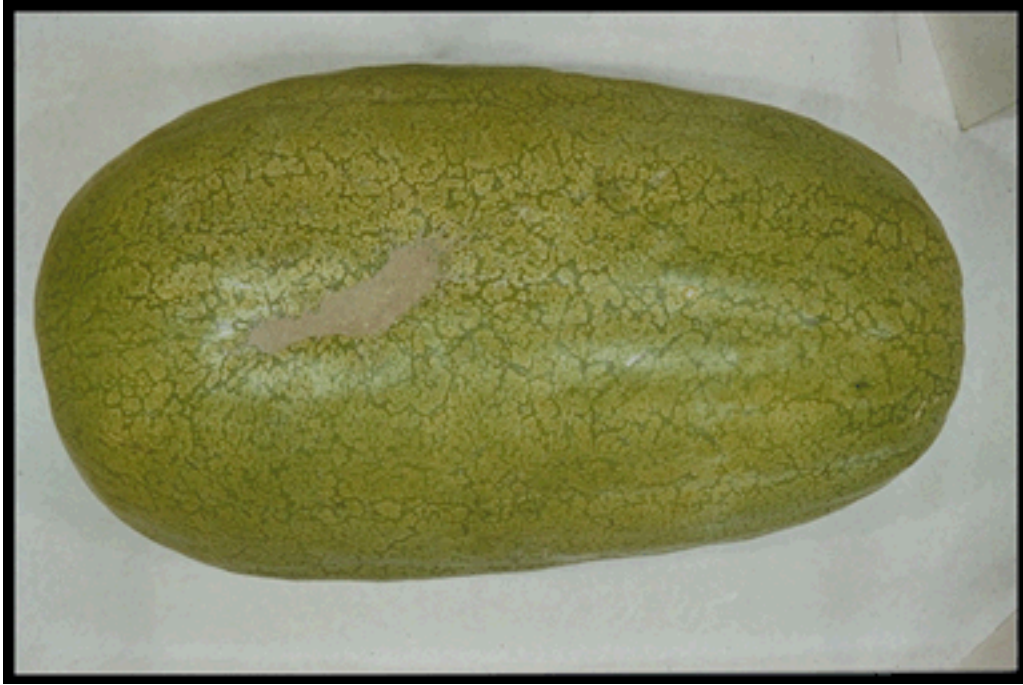
# WATERMELONS

SLIDE 206 – RIND WORM INJURY



# WATERMELONS

SLIDE 207 -- SCARRING



# WATERMELONS

SLIDE 208 -- SCARRING





# WATERMELONS

SLIDE 209 – HOLLOW HEART



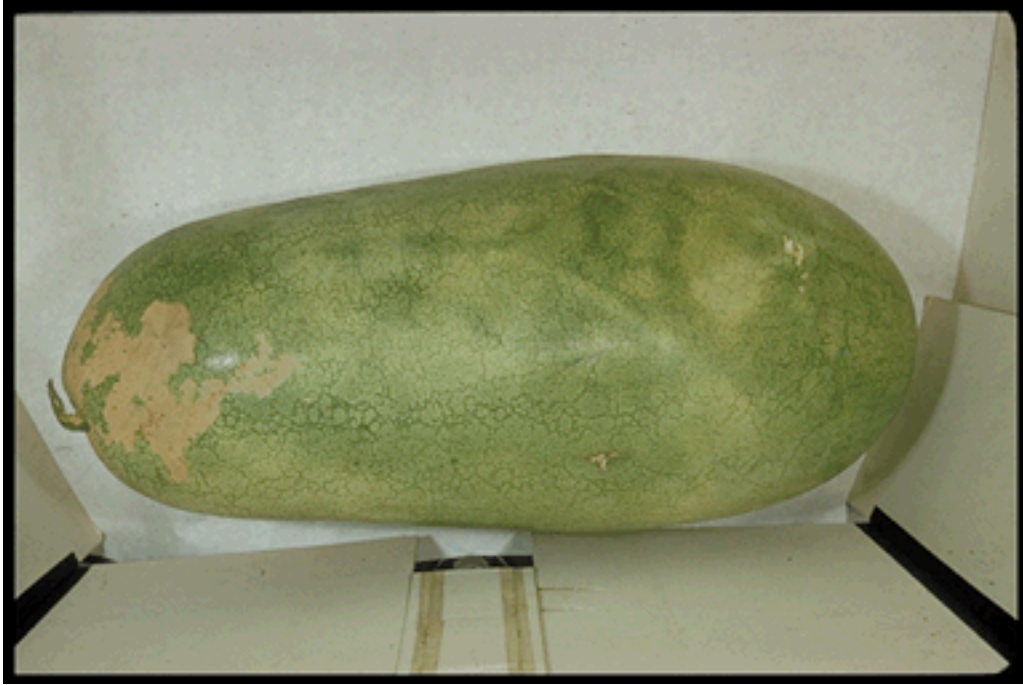
# WATERMELONS

SLIDE 210 – HOLLOW HEART



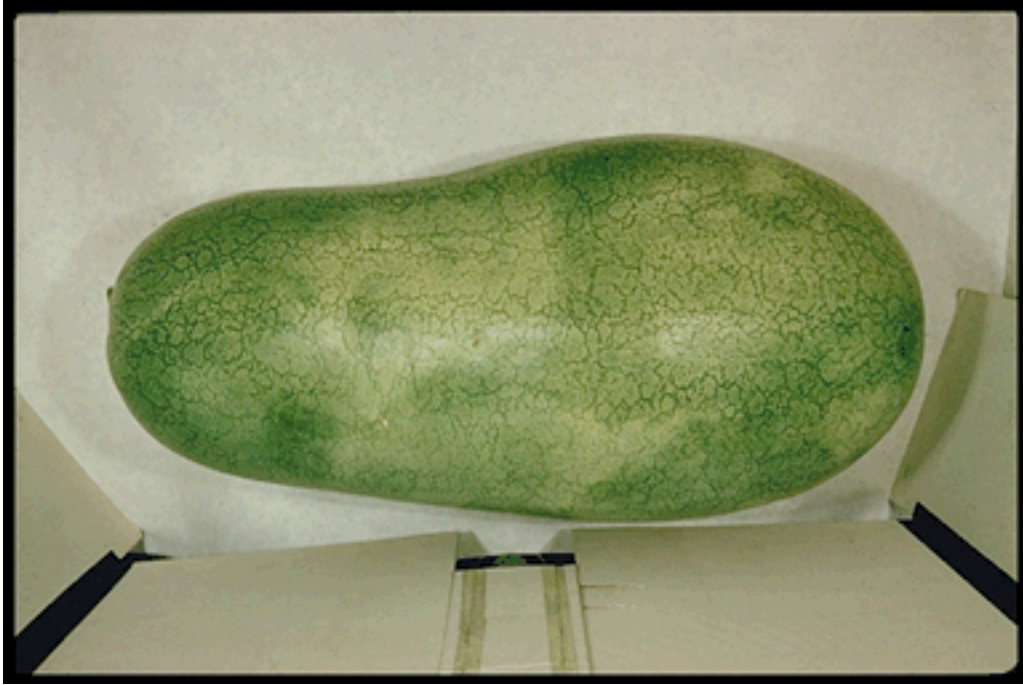
# WATERMELONS

SLIDE 211 – RIND WORM INJURY



# WATERMELONS

SLIDE 212 -- SCARRING



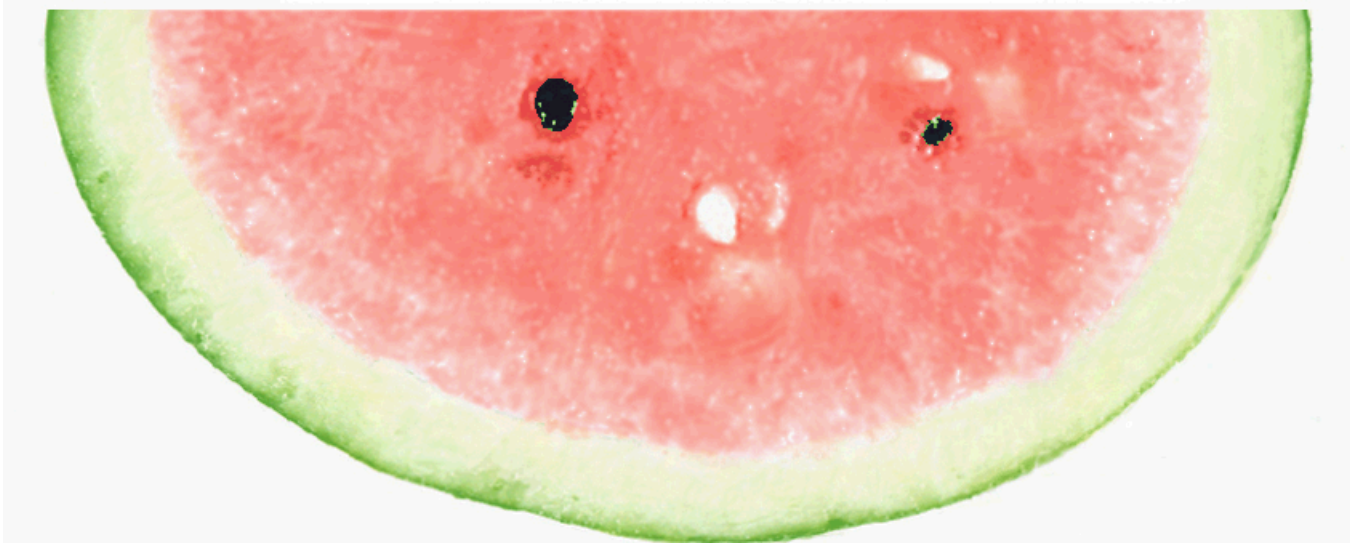
# WATERMELONS

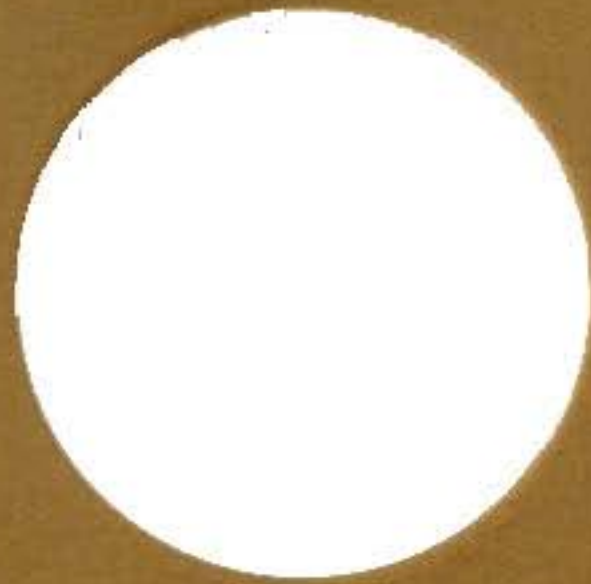
SLIDE 213 -- IMMATURE





# WATERMELONS





**USDA WAT-CC-2**

**Watermelons: Medium Brown**

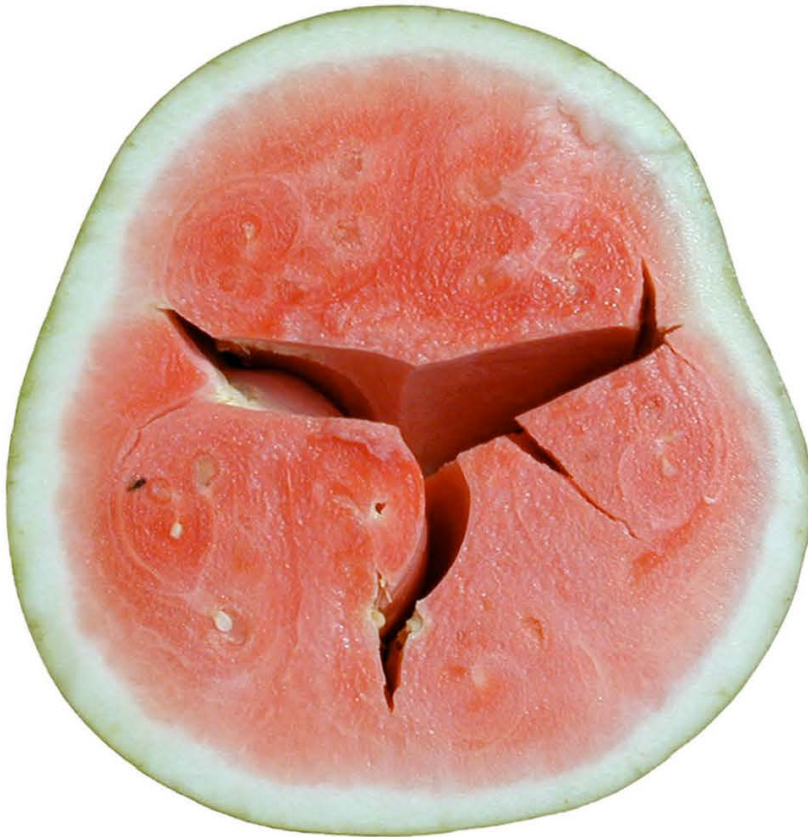
**This is the minimum brown  
color for scoring Transit Rubs.**

**August 2014**



## WATERMELONS

**Hollow Heart  
(crosswise cut)**



**Extreme example found with “traditional” crosswise cut. Crack extends horizontally through the melon from stem to blossom end. Note the indented areas of the melon circumference that correspond with each crack.**

**Hollow Heart  
(lengthwise cut)**



**Crack is oriented vertically, toward one end of this long type melon. Detected with a lengthwise cut, not evident using the “traditional” crosswise cut.**

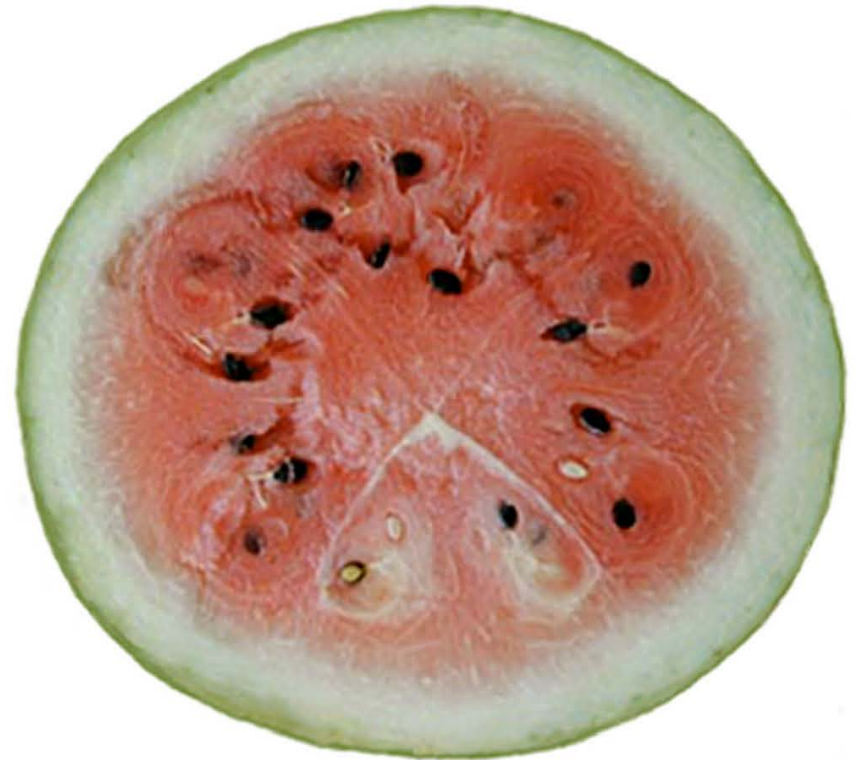
# WATERMELONS

**Internal Rind Spot**



**Seldom, if ever, detected externally. Associated with drought conditions. Spots are tan to brown, generally hard, dry and confined to the inner rind.**

**Second Growth**



**Color of affected areas can range white to light brown with flesh generally less than “fairly sweet.”**



## OVERRIPE



Melon has open seed cavities and stringy, crystallized (mealy) flesh

WAT-IDENT-3  
May 2000



## Examples of Sunscald & Sunburn on Watermelons

Sunscald (condition defect)



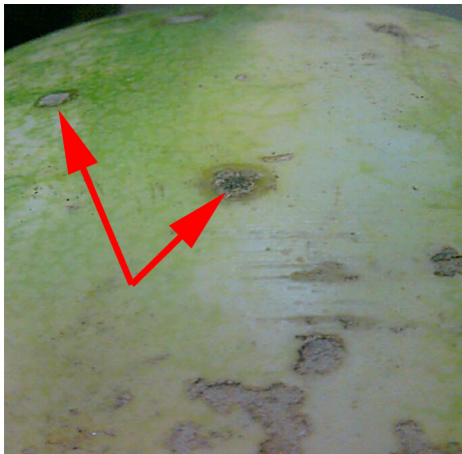
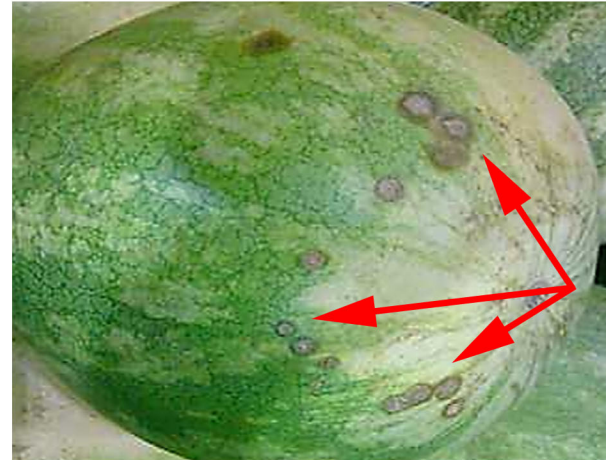
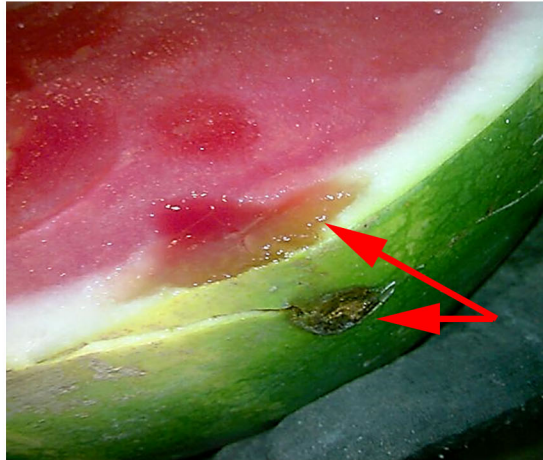
Sunburn (condition defect)



# Anthracnose (C)

**Always serious damage. Score any amount.**

Report as decay only when penetrating the rind, or when large and soft enough to be easily penetrated with finger pressure, as shown in top left photo.





# Hail, Scars, and Rind Worm Injury (Q)

Apply same scoring guide to these defects.

Hail



Hail



Rind Worm



Scar



Scar

